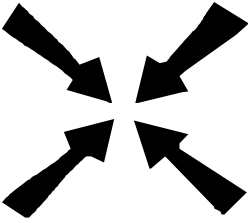


Meeting Point



April 2016



Meeting Point

Volume 40, Number 7, April 2016

The community magazine for the villages of Olveston, Tockington, Old Down, Lower Hazel, Awkley, Ingst, Aust, Elberton and Littleton upon Severn

EDITOR:

Chris Bolton
The Old Meeting House
The Green, Olveston
Bristol BS35 4EJ
Tel: 01454 610056
*meetingpointeditor@
gmail.com*

ASSISTANT EDITOR:

Angela Williams
Ashlea
Haw Lane
Olveston
Bristol BS35 4EG
Tel 01454 612850
*meetingpointmagazine@
gmail.com*

ADVERTISING:

Nigel Dawes
Cromwell House
The Street,
Olveston
Bristol BS35 4DR
Tel: 01454 201558
julie.dawes@tiscali.co.uk

Publication date
1st of each month

Material for May 2016
to the Editor or Deputy Editor
by 4th April 2016.

From the Editor

Well, I'm very happy, because this April really is a month to go town on anniversaries! Of course you know that the 21st is the 90th birthday of Queen Elizabeth II, who becomes the first reigning monarch to reach that age. But did you know that it's also the 200th birthday of Charlotte Bronte, who created Jane Eyre?

The 23rd is another big day: the 400th anniversary of Shakespeare's death. But it's also the 1000th anniversary of the death of Ethelred the Unready, which sounds as though it came as a surprise. And on the 5th it would have been the 100th birthday of Cary Grant, born and brought up in Bristol.

Finally, on the 1st (no joke) it's 40 years since the foundation of Apple Computer, which may have affected some of us more than any of the above!

Enjoy this month's issue: there's lots to read.

The picture on this month's cover shows Lambs in Spring in Littleton, photographed by Keith Burrow.

Meeting Point Founded in 1976 by the Anglican and Methodist churches in Olveston, near Bristol

Meeting Point magazine and Meeting Point Directory are online at the Community Website: www.olvostonandaust.com

Aust Parish Council Matters

Tim Pyper (austparishcouncil@googlemail.com)

Annual Parish Meeting

The annual meeting will be held on **12th April at 7.30 pm in Elberton Village Hall**. All will be welcome.

As you all know, there are many complaints about the speed of our broadband connection in Elberton and Littleton, so this year we have asked representatives of South Gloucestershire Council and BT to come and tell us what on earth is going on. This will be an opportunity for us all to hear direct from them and to ask questions – and no doubt for some of us to express our frustration. There has recently been an announcement about the measures being proposed for residents in badly served places, and we can expect an update on that.

The parish council will also present its annual report.

This is the residents' meeting and you will be able to raise any other matters with your Councillors.

Library and other Services

South Gloucestershire Council has started consultations on its own accommodation needs, and its library and one-stop-shop services. This is part of their cost cutting, and possibilities include the closure of some libraries (though probably not Thornbury), the end of the library bus service and the concentration of one-stop-shops in Kingswood, Yate and Patchway. Your parish council will be making representations and if you have views you would like taken into account, let me know. You can also respond to the three consultations yourselves on the South Gloucestershire website, at www.southglos.gov.uk/librarychanges, <https://consultations.southglos.gov.uk/consult.ti/CSPAcom16/consultationHome>, and <https://consultations.southglos.gov.uk/consult.ti/CSPOSS16/consultationHome>

A 403 – Aust to Avonmouth road

Work is being undertaken by South Gloucestershire and Bristol City Councils to repair and improve the A403 over the next 18 months. Some sections will be closed altogether for some days, and others on some nights. There will be diversions in place. I understand that closure of the section between the M48 roundabout and Pilning will be closed at some times on 3, 10, 17 and 24 April 2016, and between 11 and 23 July 2016.

The Russians are Coming!!!

David Shaw

On April 2nd at 7.30pm a choral group called Hermitage Ensemble from the Russian Orthodox Cathedral in St Petersburg will be in concert in **St Mary's Church, Olveston.**

This all male choir will be singing beautiful sacred music in the Russian Orthodox tradition in the first half of the concert and Russian folk music in the second half. Russian Orthodox music is wonderful to listen to; it is rich in harmony but is also beautifully melodious.

The choir is on a tour of the UK. They are arriving in Olveston having performed the previous day in Wiltshire and the day after the concert here they are off to Maidstone in Kent for their next engagement.

Tickets are priced at only £7.50 and are available in church or by ringing 617389 or 617491. The evening will be a musical treat not to be missed!

News from St Mary's

Roly Bain

Spaghetti Quiz

Our next Quiz is on April 16th at 7.30pm in the church. Spaghetti Bolognese is on the menu, and tickets are still only £5 per person. There's a maximum of 6 in a team, and a licensed bar. Book early to avoid disappointment - we can't cater for more than 90. If you want earlier warning, join the mailing list at roly@rolybain.co.uk

Peacock Ball

Our annual ball is on Friday July 8th in the marquee at Tockington Manor. The Peacock Ball begins at 6.15 for 6.45pm, with carriages at midnight, dancing once again to the superb Manhattan Nights, and it's in aid of the Tower Fund and St Peter's Hospice. Dress code is 'Black Tie and Plumage!' Tickets at £60 are available from Julia Johnstone 07966 302762. Again, there's a limit on numbers so book as soon as you can...

New Altar

We have been blessed with a new altar at St Mary's, made for purpose by a local craftsman, much smaller and more modern than our previous one, and approved by the Diocese, as it has to be. It's been paid for out of a legacy from Muriel Olive and has the blessing of the family of the man who made our previous one, back in the early 1970s. We hope everyone likes it ...

Art Trail

Once again we are acting as a venue for the Thornbury Arts Trail at the end of this month, with three artists exhibiting their work, including Angus Macaskill. It begins on Friday, 29th April and continues till the weekend of May 7th. Look out for the brochures, and do come and have a look!

Straw Poll: Say 'Neigh'

Dr Rovert

A recent traffic report lists Bristol as the most congested city in the country, with average traffic speeds the lowest for years. Transport bosses at City Hall, along with Avon and Somerset Police, have vowed to do their utmost to find answers.

The first thing they did was to set up a Police Research Team to conduct a traffic-flow survey across a sample of local towns and villages to determine the extent of the problem. Their Report has just been published and (guess what?) top of the list for small villages is **Olveston!** This is perhaps not surprising for many of us who live here, but the Report's conclusion is *definitely* surprising. It states that the primary cause of the traffic-flow problem is not the on-street parking, nor the volume of through traffic, nor the number of cyclists. The primary cause of the problem is horses! Horses, says the Report, don't have wheels and so they create a hazard when they mix with things that do!

The Research Team have no wish to ban horses altogether from Olveston, but they say there is an urgent need to lessen the hazard. They believe that horses can co-exist with the wheels and, to ensure this is done safely, they are recommending a bye-law making it mandatory for horses to be fitted with signalling and brake lights while being ridden through Olveston village. They are asking all horse owners to bring their horses into a local garage, during the month of April, to have them fitted with the necessary lights.



As a long term resident of the Parish, I disagree strongly with this proposal and so I'd like to conduct a straw poll among Meeting Point readers.

If you disagree with the proposal to put signalling and brake lights on horses, come along to an open meeting outside Olveston Stores at 12.00 noon on Friday April 1st. Bring along a placard with the words SAY NEIGH prominently displayed. Bring along your horse if you have one with a SAY NEIGH placard prominently displayed round its neck or (even better) from its tail.

Horses were here first and have every right to be on our roads.

The Tockington quarry that never was

Nick Fear

Many of us enjoy walking through the area of the old Tockington Manor Park at the rear of Tockington Manor School. Access via Old Down Hill or Washingpool Hill Road offers fields and woods full of nature, and once the heights of Old Down are reached, views over Sheepcombe Valley and the Bristol Channel are worth a contemplative pause. How impossible a walk this would be had quarrying plans for the area advanced. Pathways would have been obliterated by a huge hole in the ground with a flooded base, and a rugged cliff face dozens of feet high would have been created below Old Down. Sheepcombe Farm may have changed its usage and like other buildings had its colour transformed by frequent dust storms. For years regular explosions would have rumbled through the ground. Boundary roads may have been connected by a windy cleft, more evocative of Cheddar Gorge than the Severn Plain in Tockington.



On 3rd June 1960 the local firm of Lewis Rugg Ltd applied to win and work limestone in the area of Tockington Manor Park. Good limestone for local roads, new motorways, the I.C.I. Works at Avonmouth and general building was an ongoing requirement. The plan was to develop a 13 acre site in two stages. Stage 1 would last for 13 years, stage 2, 23. The quarry would be 150 feet deep, with spoil heaps 230 feet high. Using drilling and blasting 4,260,000 tons of stone would be excavated.

Local opinions mobilised

On 25th July 1960 a special meeting at Alveston Jubilee Hall was attended by 200 people. Residents felt that quarrying in the area would cause sleeplessness and spoil the surrounding countryside. Words like “alarming” and “dreadful” were reported in the Western Daily Press as was a vote of 134 to 24 to oppose plans. The Rev Keith Pilcher stated that the proposal was to turn one of the loveliest spots in the neighbourhood into one of the ugliest things in man’s creation. “It is a desecration and should be opposed by every Christian in the district. It is dreadful to think that a garden of God is going to be turned into a wilderness”.

Local opinions were not always so damning. A later parish poll was against the quarry, but only by 386 votes to 317. Gloucestershire Country

Council debated the application in September 1960 and refused it, largely over environmental concerns. An appeal to the Ministry of Housing and Local Government in Whitehall was immediately launched, supported by a petition from 309 local residents.

Government enquiry and outcomes

In April and June 1961 a public appeal enquiry took place in Alveston. The case from Lewis Rugg was admirably argued. Geological specialists, engineers, surveyors and architects gave accounts of plans. The land to be quarried was owned by an extremely esteemed employer, Northover Brothers of Home Farm, Tockington. James Northover spoke well of the proposal and the employment benefits this would bring. Employees Eddie Woodward, Aaron Davey and Richard Tuck supported him. The Transport and General Workers Union, The Council for the Preservation of Rural England, and The Ramblers Association were represented. Local residents George Patterson, Clifford Pursey, Clare Cunnington, Sir Charles Allfrey, Geoffrey Vizard and Garnet Jeffries gave opinions.

Tockington Manor School was extremely close to the proposed site. An Old Down and District Preservation Society had formed and its honorary secretary, Keith Chivers, was a teacher there. He and headmaster Major Gordon Tovey expressed concerns that increased traffic would be a danger to pupils. Many thought that the quarrying itself would be damaging to the well-being of all locals. Dust would coat the local countryside and be carried further afield by lorries transporting stone along roads which were too weak to support them. Gloucestershire Council restated its position that large scale quarrying would be seriously detrimental to the amenities of Tockington, in terms of noise, dust and general disturbance. Access to the site was poor, narrow roads with steep banks, severe gradients and blind corners were unsuitable for heavy quarry traffic. The enquiry report was submitted, but in October the appeal was dismissed.

The matter did not quite end there. In October 1963 James Northover wrote again to the Minister on behalf of Northover Brothers. He argued well as to the need for quarried stone and requested permission to open a quarry at Tockington. This initiative did not bear fruit.

Harn Hill Quarry at Olveston which dated back to the 1890s was worked-out around the late 1980s. What some considered a blot on the landscape was filled in. Few signs of quarrying in the area remain, and green fields now cover a site which in 1986 had been 160 feet deep with a 500 feet perimeter, from which 160,000 tons of stone a year had once been removed. At the end of the life of a Tockington Manor quarry site, could nature likewise have been restored again? If not, a good kick of a football or a cricket boundary on Old Down could have seen balls disappear over a quarry edge. Whatever the final result the landscape of the area we know and love today may well have looked very different.

Oveston Parish Matters

Richard Rogers (clerk@olvestonparishcouncil.gov.uk)

The Oveston Annual Parish Assembly is to be held this year in the Parish Hall on Tuesday May 17th at 7:30, and is open to all residents. The Annual Parish Assembly is an ideal opportunity to come and meet the Parish Council (including the new members) and is an opportunity to question the Parish Council on a variety of issues.

Besides the formal requirements to present the 2015/16 Expenditure and report on what it has achieved throughout the year, Oveston Parish Council will present its ideas for the coming year and the proposed budget for 2016/17. It is also hoped to give some feedback on the recently completed Housing Needs Survey, and the work being undertaken by the various subgroups of the Oveston Parish Steering Group chaired by Geoff Anderson. If you have any other items that you wish added to the agenda please let the Clerk know before Friday 22nd April 2016.

Following feedback from recent Annual Parish Assemblies, the meeting will close by 9:30, and an initial draft agenda for the meeting will be published on both the Oveston website and the Parish Council website at the beginning of April.

The Oveston Parish Council website (www.olvestonparishcouncil.gov.uk) is gradually being populated, but is taking longer than anticipated, so please keep rechecking the site, or contact the clerk by email if there are particular pieces of information you require.

The Parish Council would like to thank Claire Ackland for the work she has undertaken to set up and maintain the 'Tockington Tardis' (Tockington Telephone Box) for the last few years. The Tardis is used for exchanging books and as a reception site for food donations. Unfortunately Claire is set to move shortly and so a new volunteer is needed to continue this good work. As a Parish Asset, the Council can provide funds for upkeep of the telephone box, but it does need a champion to look after it.

Finally, the Council is still planning to plant more trees around the Parish, so if you have any suggestions for sites, then please let the Clerk know.

A Local Plea

Nearby residents have asked Meeting Point to publicise a reminder that when you are **entering or leaving Foxholes Lane (opposite the cricket/football ground), you should drive on the left hand side of the road.** Driving on the right has several times nearly caused a head-on collision.

Aron Wins Again!

The Editor's prize of £10 for the first correct answer to the Easter Puzzle set by Jan Winter has gone to Aron Saunders, aged 10. Well done to him!

Aron also took the prize in the Christmas Puzzle competition, so the question is: where are the other star mathematicians in the Meeting Point area? Looks like Aron's school-age contemporaries need to develop a sense of competition; but just as much to the point, come on you adults, you can't let Aron beat you every time!

Here is Jan's April puzzle – no prize this time, but the Editor would be interested to see how many clear thinking readers we have, so don't be afraid to send in your solution.



The fox, the hen and the corn

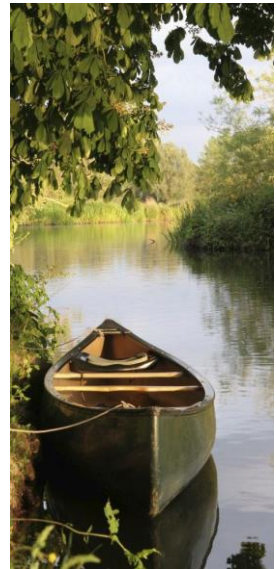
April's Puzzle, by Jan Winter

Once upon a time a farmer went to market and bought a fox, a hen and a sack of corn. (No, I've never seen a fox on sale in a market either!)

The farmer came to a river which needed to be crossed by boat. He could take only one of his purchases – the fox, or the hen, or the sack of corn - in the boat at a time.

If left together on the riverbank, the fox would eat the hen, or the hen would eat the corn.

Can you find a way for the farmer to get all of them across the river safely?



Update at the butchers



By Pat Thirkettle

Scott Edmunds took over the butchers from Richard Powell nine years ago. So much has changed in that time that an individual village butchers shop would find it difficult to survive, so it is a very different business today. However the ethos has not changed.

Initially Scott sold at Farmers' Markets in the Bristol area, in order to become known by chefs who favour buying in markets. Gradually the business developed commercially into wholesale, and has become known as the foremost supplier of ethically produced, dry aged and free range produce with full traceability in Bristol and as far south as Clevedon. All meat is sourced within fifty miles of the shop; the closest is from the fields on Pilning Street, followed by Frampton-on-Severn and Berkeley.

Since 2010 two vans deliver meat daily to twenty to thirty restaurants, that include Old Down Manor, Casamia and Kensington Arms, and to many independent pubs.

The business has grown ten times and the hub of all this activity is still in our village; the shop is open on Thursday, Friday and Saturday. The demand for fresh fish lessened, but you can still order some. Go in and see the new beef dry ageing fridge that controls the bacteria/humidity to allow the meat to age for forty to fifty days. It has a glass door so you can see for yourselves.

A few lines from Peggy James

I would like to thank everyone who gave me help, cards and good wishes during my recent spell in hospital. At present I am still recuperating but hope to be back to my usual health in the near future. A big thank you to you all. From Peggy

From the Registers of St Mary's Olveston

The following were confirmed by the Bishop of Bristol on 7th March:

Tom Bullock, James Harrod, George Heming (St Mary's, Olveston), Laura Breen (St Alban's, Westbury Park).

Behind the Scenes at the Palaces

Wednesday, 6 April 2016, 7.30pm, Olveston Methodist Church



2015 marked the 500th anniversary of Hampton Court Palace. If only walls could talk...

South Gloucestershire resident and former Historic Royal Palaces curator Sarah Parker spent over 10 years working across five palaces, including Hampton Court, Kensington Palace and HM Tower of London.

Sarah will reveal a tantalising look behind the scenes at the palaces: marketing them around the world, the pitfalls of launching a major exhibition and meeting many of the wonderful and colourful 'Grace & Favour' residents.

This is our last indoor meeting until October 2016. The meeting is open to everyone and all are very welcome. £2 payable at the door.

OPTA: Great Olveston Wine Challenge

Don't forget! One of the most popular events of the local social calendar, the Olveston Parish Twinning Association wine challenge, is on **Friday 15th April at 7.30pm in the Parish Hall**. We challenge you to test your knowledge of wines - and your ability to drink them. You will be served a selection of anonymous, and hopefully delicious, wines and all you have to do is match the wines to the descriptions on your answer sheet. The evening is sure to be great fun - it always is.

It's £12 for OPTA members and £14 for non-members, to include all the wines and some tasty nibbles. Last year some folk couldn't get tickets, so to make sure of your place please buy in advance - call Noel on 01454 614099.

Olveston & Tockington Tennis Club

AGM 8pm Tuesday 19th April Olveston Parish Hall, Tockington

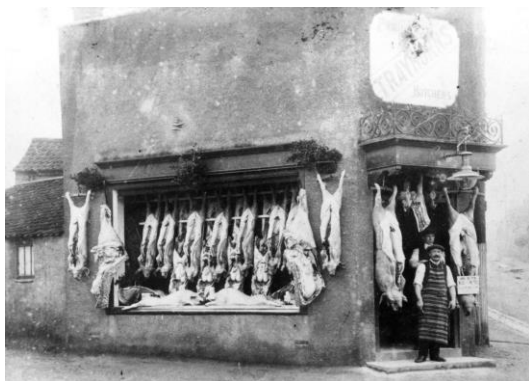
The new tennis session is about to start. Come and join us at our AGM and find out how to join. It is an exciting time for the club as we are developing our new clubhouse. If you can't come, look at our website www.OTTCTennis.co.uk or email ottctennis@hotmail.com.

History in the making

An exhibition at Thornbury & District Museum about things made and produced in our area – from leather items to ploughs to splendid cuts of meat – with stories of gunpowder and pigeon poo along the way!

Did you know that the Mumtaz restaurant in Thornbury stands next to the site of an Elizabethan tannery? Katherine Rippe, who died in 1594, left the Tan House to her nephew. Hers was just one of many Thornbury leather-making businesses over the centuries. (There were seven different Thornbury tanners in 1784, for instance.)

Savery's, that well-known Thornbury shop, has been run by four generations of Saverys, starting with Mark Savery in 1871. He invented a plough (the Savery plough) which sold as far afield as Australia - yours for only four pounds ten shillings!



Producing finely crafted cuts of meat was another kind of 'making'. Here's a picture of Trayhurns, the butchers. You will know their premises better as Gulwells, the funeral directors.

There's an Olveston connection with this business which operated in Thornbury from at least the 1880s up to 1937. Roy Trayhurn and his brother

Harry (that's Harry in the shop doorway above) finally dissolved the business and retired in 1937. When Roy died in 1944, he was living at Littledown in Haw Lane, Olveston.

Roy's mother Elizabeth was a remarkable woman. Widowed in 1889, when her husband was only 33, she carried on and built up the family's butcher's shop and slaughterhouse business for over 40 years - and managed to bring up eight children as well. One of these, Roy's younger brother Victor, very sadly died in 1916 of wounds received at the Battle of the Somme.

There are lots of fascinating tales like this, all based on local historical documents and researched by museum volunteers. Don't forget the gunpowder and pigeon poo! Alongside the stories are hundreds of objects made and used by local producers. One visit won't be enough to take it in. Luckily, **entrance is free**, so you can come back often!

Tuesdays to Fridays, 1 to 4pm. Saturdays, 10am to 4pm. Free!

1st Olveston Brownies need your help

1st Olveston Brownies are fundraising by recycling clothes, shoes and old gadgets. We are aiming to fill a garage full of recycling by the 11th April.

We would be most grateful for donations of your old, worn out, damaged or unwanted clothes, old handbags, shoes and belts, old sheets, towels and duvet covers, jewellery or watches. We can also take coins and currency, mobile phones, cameras, gadgets (games consoles, sat navs, games and accessories) and stamps.

Please place donations in bin liners and either leave by the front door of 11 Denys Court or arrange a collection by calling Maggie on 610053 or email jane@prologue.co.uk

Old Down Cricket Club

Tony Gardner 07889 727729

150 Club Winners March 2016:

£50	Bill Finch
£15	Pete Jackson
£5	Iain Murdoch

Latest £25 Bonus Ball Winners:

13/02/16	Tony Williams
05/03/16	Bhavin Radia

Diary Dates:

Senior indoor nets are at Castle School starting **Thursday 31st March 19:30 - 21:30 through to Thursday 28th April**. All players intending playing senior cricket this season are welcome.

The ever popular ODCC day at the races is back!

Cheltenham Race Meeting - Weds 13th April 2016, £45 per person:

10am	Breakfast Roll at The Fox Inn
11am	Coach Departs ODCC
12pm- 5pm	Races
6pm - 8pm	Buffet (At a venue in Montpellier, Cheltenham)
9pm	Return to ODCC

Enquiries, and to book your place, contact Dave Gardner,
dave.gardner@gillmansmain.com.

Friends of St. Mary's

The prize winners in the March draw, held on 3rd March 2016 at the Friends' Committee Meeting were:-

<u>Amount</u>	<u>Number</u>	<u>Name</u>
£150	175	Mrs B Morgan, Tockington
£75	467	Mr R Hicks, Cornwall
£25	267	Mr I Hughes, Olveston
£25	473	Mrs M Setter, Olveston
£25	464	Mr S Panes, Pilning
£20	172	Mr A Clarke, Olveston
£20	478	Mrs S Farr, Olveston
£20	255	Mrs F M Riley, Bitton
£10	204	Mr A H Dix, Tockington
£10	402	Mr L Slaytor, Tockington
£10	221	Mrs S A Pearce, Ingst
£10	176	Mr J Hedges, Pilning
£10	315	Mr R J Spratt, Tockington

If you are not yet a member and wish to join the lottery please telephone Andy Phillips on 01454 614890.

Stepping Stones Family Fun Day

Saturday May 7th 2.00pm – 4.00pm – Elberton Village Hall

In aid of 'Make a Wish'

Come and join in the fun and support this worthwhile charity who, 'grant magical wishes to children and young people fighting life-threatening conditions'. There will be a cake stall, raffle, tombola, second-hand books and toys, refreshments and many different children's activities, including face painting, colouring competition and cake decorating.

Our usual forest activities will be available in the woods for both parents and children to join in with. These include den building, making crowns, walking with mirrors, bark rubbing and making magic potions. The garden with the large wooden climbing frame and mud kitchen will also be open for the children to play in.

Come and meet our friendly staff team and see all our facilities. All proceeds from the day will go to the 'Make a Wish Foundation'. For more information please ring Gill on 07853173221. Hope to see you there!

Movies at St Mary's: April *Trevor Anderson*



Springtime Greetings to all Meeting Point readers from the Movie Club Team at **St Mary's Olveston!** Our Spring Programme has now been published and features NINE terrific films from April - June. Movie Club members will already have received theirs by email and paper copies are available to pick up from just inside the church door.

As I'm sure all readers now know, we show films for the 'grown-ups' on the first and third Monday evenings of each month and for 'children of all ages' every Monday morning during school holidays. Everyone is welcome to all the films (you don't need to be a Movie Club member) and there is no need to book. Admission is free, although a **donation** at the end towards expenses is always welcomed and appreciated.

MONDAY MOVIES (*Recent releases and ever-popular classics*)

Mon 4th Apr at 7.30pm: Sean Connery excels in this briskly-paced Cold War thriller from the 1960s when, once again, he saves the world from the terrorist threats of the SPECTRE organisation. (*1963, Cert PG*)

MONDAY MOVIES EXTRA (*'Non-mainstream' films and historic classics*)

Mon 18th Apr 7.30pm: Set in a former mining village in Wales, this is the inspirational true story of a group of friends from a working men's club who decide to take on the elite 'sport of kings' and breed themselves a racehorse.

(*2015, Cert PG*)

CHILDREN'S MOVIE CLUB (*Every Monday morning in the school hols*)

Mon 4th Apr at 10.00am: This enchanting Irish animation is the story of Ben and his little sister Saoirse who embark on a fantastic journey across a fading world of ancient legend and magic in an attempt to return to their home by the sea. (*2015, Cert U*)

Refreshments available at all the shows, plus licensed bar in the evenings and popcorn, soft drinks and biscuits in the mornings.

For copyright reasons we can't name the films here, but if you **join the Movie Club** we'll send you titles and full details by email. It costs nothing to join – just email me at trevoranderson@btinternet.com.

Visit to Gautampuri, Delhi

By Gail Lowe, Lesley Clarke, Bernard and Jo Amos

You may remember that last year St Mary's ran several events to raise money to construct a building in the Delhi slums. This is to be used to provide school rooms for a hundred children living in the slums, who were previously taught in make-shift classrooms, and also to provide a base for healthcare workers. The project was channeled through Bridge Trust Ltd, a Christian organization, who have been working in partnership with Dr Jey and Lizy Jeyaseelan in India for thirty years.

In February, four St Mary's members travelled to India (at their own expense), to open the building and see the work being carried out there. To say it was a humbling experience would be a massive understatement! What has been achieved with just over £20,000 is incredible. The building has three floors and a usable roof area plus three toilets (very important point!).

When we arrived in the slums, we found the whole street had been decorated and about two hundred onlookers were there to greet and garland us. We cut ribbons on each floor and prayers were said for the work of that floor, for the children and for the 35 health care workers (who live and work in the slums).

Before this visit to India, the congregation St Mary's had raised a further £590.00 to purchase shoes for the slum children attending the school, more than enough for each child to have a pair and the excess will be used to buy further shoes for another school in the slums. We met 100 eager young children (4 - 11 years), sitting cross-legged and quietly in a small room. The amazement on their faces as the shoes were handed to them, each with a box having their name on, was tear-jerking.



We also met all the health workers, again sitting cross-legged on the floor, with beautiful saris as their uniforms. They each had a medical bag containing basic equipment and supplies. Many of them wanted to tell of situations where they had helped. These included medical emergencies, where the patient would not have had immediate access to advice and treatment. Incredibly, they are on call 24/7 and a real inspiration. The building will be invaluable for their work, providing a base where they can gather together.

As we left the building, a choir and music group sang for us and everyone wanted to shake our hands and say “namaste” (hello).

The work in the slums is part of the Love India Trust, which is the charity branch of Victory Churches, India. They also run an orphanage in Delhi which we visited. There, the children (all girls at this home), greeted us with flowers and danced for us. They are well-looked after and there was a very happy atmosphere. We heard how they were all going to local schools and getting a good education. In the orphanage they also learn other skills, such as sewing and computing. These, plus their education, should enable them to support themselves when they leave.

We would like to say a big thank you to all those that helped raise the money to finance this building and if you would like to hear more about this, you are very welcome to come to a presentation at **St Mary's on Thursday April 21st at 7.30pm.**

Elberton – Public Footpaths and Toll Rides

Sue Russell and Lindsay Saunders

We want you to enjoy walking and riding in our beautiful countryside. Unfortunately, in the area covered by the Map overleaf there have recently been a few incidents. This has prompted us to write this article.

We feel that there has been some misunderstanding about the Routes of both the Public Footpaths and the Toll Rides. The Map clarifies this. The Toll Rides are marked in diamonds and the Public Footpaths in dashed lines. (You will find this is clearer if you look at the Map in the on-line version of Meeting Point at olvestonandaust.com: the diamonds are blue and the dashed lines are pink). Where the Public Footpaths and Toll Rides run in parallel there is plenty of room for both. We are trying to improve the markings, but in the past some of our Notices have been vandalised. As responsible people it is up to you to make sure that you are on the correct path – whether it be a Public Footpath or a Toll Ride. As the Notices state, Toll Rides are not Public Footpaths and riders purchase a licence to use them.

Both Walkers and Riders must respect each other and comply with the walking and riding codes of conduct.

Please remember that the Toll Rides were set up to provide greater access to the countryside, and to reduce the numbers of horses on the road – which are sometimes a danger to both traffic and riders.

Enjoy your walking and riding.

Old Down Toll Rides Landowners

Sue Russell, Toll Rides Management, 07974 236 505, info@ellinghurst.co.uk

Lindsay Saunders, South Glos Council PROW, 01454 86100,
Lindsay.Saunders@southglos.gov.uk

AFL Update



There's a lot happening at A Forgotten Landscape, the local Landscape Partnership project funded by the Heritage Lottery Fund. Working with volunteers is at the heart of their projects. All the training is free – and no experience is necessary. We promise to help you every step of the way. Here is **another project**, in addition to those mentioned last month.

Archaeological surveying – geophysics (magnetometry and resistivity)



Interested in archaeology? Find out how to conduct geophysical surveys and help survey The Toot in Oldbury, an Ancient Monument with plenty of secrets to uncover. **Training days – Sat 9 and Sun 10 April.**

For more information please contact Katie Scaife on 01454 863 043 or visit our website at www.aforgottenlandscape.org.uk.

More Group Venues for the Severn Vale Art Trail!

The Thornbury Arts Festival is pleased to present its Severn Vale Art Trail from the 29th April to the 8th of May 2016. The trail follows the Thornbury Arts Festival week when examples of the artists' work are exhibited in our Showcase Exhibition in Thornbury Town Hall. This will include work contributed by local schools.

Please put these dates in your diary.

- The free **“Showcase Exhibition” in the Town Hall** precedes the trail from **Friday 15th to Saturday 23rd April** in festival week.
- The **trail** begins on **Friday April 29th** and finishes on **Sunday May 8th.**
- The **Thornbury Arts Festival** takes place from the **Friday 15th to Sunday the 24th of April** before the trail.

“Legs eleven” lucky new artists are joining the trail in our 11th year. Several are painters, others work with textiles or glass. To visit them in their own homes and studios is fascinating, reminding us of the great talent that exists locally behind closed doors.

We have a growing number of shared venues. In addition to the Thornbury Pound Gallery, Thornbury Museum, the Whitsun Hall at The Hatch in Thornbury, Celebration Fairs, TomatoJack Gallery in Berkeley, St. Mary's Church in Thornbury, St.Mary's Church Olveston and the Village Hall at Oldbury we have The Anchor at Moreton, The Jenner Museum at Berkeley and Thornbury's CLaSH studios. Many of the Thornbury artists may be visited on a walking trail throughout the town – a treasure trail indeed!

Sophie Ploeg, portrait and lace painter, will be exhibiting at the Castle School's Octagon Gallery, having shown in many major galleries during the year, including the Portrait Gallery in London. Regular visitors will look forward to seeing the work of many artists loyal to the trail. Prestigious artist Jane Lampard shows from her home in Wick, landscape painter Claire Failes in North Nibley, Liz Armstrong, ceramicist, in Charfield and a group of accomplished artists at Thornbury's Whitsun Hall. Rosemary Millar shows her high quality handmade jewellery in Thornbury Museum. There are 62 artists altogether!

Following a trail to access the work of painters, ceramicists, textile artists, photographers, jewellers and glass works is an exciting way to spend your time and offers a chance to purchase fresh works of art for your home. Watch out for brochures in March from Thornbury Town Hall and in outlets in the surrounding towns and villages.

Enquiries to Jane Parfitt – arttrail@thornburyartsfestival.com

Super Successful Swimarathon

The Rotary Club of Thornbury held their annual Swimarathon at the Thornbury Leisure Centre on the Weekend of 4/5/6 March 2016; and once more the event was a great success.

Over the weekend 60 Teams swam a total of 6,594 lengths of the pool that represents an astonishing 164,850 metres. Not only that, but the sponsorship gained by those teams amounted to nearly £13,000, one of the best weekend totals in the 30 year history of the event. Taking into account Gift Aid and Corporate Sponsorship, the total should be over £15,000.



The event was opened by Thornbury Town Mayor, Cllr Guy Rawlinsong accompanied by Rotary President Ben Bradley and Helen Mackay from the Jessie May Trust, one of the headline beneficiaries. The other headline charity is the National Eye

From l to r: Thornbury Rotary President, Ben Bradley; Event Organiser, Derek Baker; Helen Mackay from the Jessie May Trust and Thornbury Town Mayor, Cllr Guy Rawlinsong.

Research Council, based in Bristol, and of course, many other local groups and charities will benefit over the coming year.

Thornbury Rotary would like to express their gratitude to all who supported the event including the corporate sponsors, "Panache", the Castle School Steel Band who entertained us and, of course, all the swimmers their friends and family who came along to support and add to the atmosphere. Thank you all!!

Yours Faithfully



Ship Shape

by Rev Pete Brazier



I was having a conversation recently about the direction the Church is travelling in. The person I was talking with chose the image of a ship to describe the Church. I liked this image, because it gets away from the church as a building. A ship has purpose and direction; a ship can lose its way, get damaged or even sink, but it is built to travel. I also like this image because, although there may be passengers, the crew are essential and if they don't work as a team, the ship will struggle to move.

This person also described the minister as the captain and the Spirit as the wind in the sails. I liked the idea of the spirit as the wind in the sails, but I was troubled by the idea that the minister might be thought of as the captain. At the time I couldn't think why, but later it became clear. The captain of a ship must be obeyed, there is a firm and clear chain of command and, short of a mutiny, the captain's word is Gospel. My word isn't Gospel, that's a role for God, through Jesus, the word. So what role does the minister of a church hold on this ship? Well, perhaps I might see myself as the navigator, helping to interpret the charts and plot a course through the waters. But really, I see the minister as the head chef. It is the minister's role to ensure that everyone is spiritually fed; that the food they receive is not just nutritious, but also properly prepared, not undercooked.

Like any metaphor, it's not perfect, but it's a good one to reflect on. And the question remains. What are you? Are you a passenger or part of the crew? Are you in the crow's nest or swabbing the decks? Are you repairing the engines or responsible for on board entertainment? And what would you prefer to be, what would you feel called to be?

Church News

ST MARY THE VIRGIN, OLVESTON

Apr 3	8am	Holy Communion	Rev Philip Rowe
	10am	Holy Communion	Rev Philip Rowe
	6pm	Evensong with Choir	Mrs Janet McBride
Apr 10	8am	Holy Communion (BCP)	Rev Ann Lloyd
	10am	Morning Worship with Choir	Rev D Bone & Mr D Jones
	10am	Breakfast Club	Breakfast Club Team
	6pm	Holy Communion	Rev Philip Rowe
Apr 17	8am	Holy Communion	Rev David Bone
	10am	Holy Communion with Choir	Rev Philip Rowe
	3.45	Back to Front	Paul Harrod
	6pm	Olveston Course	Revs P Rowe & S Williams
Apr 24	8am	Holy Communion (BCP)	Rev Helen Webb
	10am	Rogation	T Cook & P Harrod
	6pm	Evensong (BCP)with Choir	Revs P Rowe & A Lloyd

Information on services correct at time of going to press.

Rev Philip Rowe, 01454 613223; email: office@stmaryssevernside.org.uk

Rev Roly Bain for Baptisms, Marriages & Funerals 01454 616593.

Verger: **Mrs. June Robbins**, 01454 617491

www.stmarysolveston.org.uk/index.html

PRAYER GROUP: Mondays, 2.45pm in the Chancel

WEDNESDAY HOLY COMMUNION: At 9.00am led by the Rev. Roly Bain except 4th Wed when it is at Olveston Methodist Church

Morning Prayer 8.30am daily ex. Wed

CHAPELRY OF ST JOHN, AUST

Apr 10	5.30	Holy Communion.	Rev Ann Parker
Apr24	5.30	Evening Service	Rev Ann Parker

Focal Minister: **Rev Ann Parker**, 01454 632329

e-mail annatdibley@btinternet.com

Church Wardens: Jon Burnett 633835 & Jenn Dickens 632035

ST MARY DE MALMESBURY, LITTLETON-ON-SEVERN

Apr 3	9am	Matins	Mrs Tracey Black
Apr 17	9am	Holy Communion	Rev Anna Hansell

Contact **Mrs Tracey Black** 01454 417660

ST JOHN THE EVANGELIST, ELBERTON

Apr 10	9am	Matins	Sandra Edgerton
Apr 24	8am	Holy Communion	T.B.A.

Contact Mrs Tracey Black 01454 417660

OLVESTON AND TOCKINGTON METHODIST CHURCH

Apr 3	10am 6pm	Tock. Ch. St Andrews	Morning Worship led by Mr John Creech Evening Worship led by Mr Ken McNally
Apr 10	10am	Olv. Ch	Morning Worship led by Mrs Rosalie Doyle
Apr 17	10am	Tock. Ch.	Morning Worship with Holy Communion led by Rev Sandy Williams
Apr 24	10am	Olv. Ch.	Morning Worship led by Mrs Rosalie Doyle

NORTHWICK LUNCHEON GROUP: This meets at 12.30pm on Wed. 13th April
To book your lunch please ring 416528

TOCKINGTON LUNCHEON GROUP meets at 12.15pm in the Swan on Thurs 21st April. To book please ring 613241 or 612112

COFFEE MORNINGS: Sats 10.30 - 12 noon in the Olveston Methodist Hall.

PRAYER MEETING Tuesdays 9.00-10.00 in Olv. Methodist Church.

HOUSE GROUP Tues 5th April at 6 Manor Close at 10.30am and 21st April at 7 The Green Olveston at 10.30

THE OLVESTON COMPUTER CLINIC Olveston Methodist Hall

Monday 2-4pm Wednesday 10-12 Friday 7-9pm

Ring 07833 354672 or 07957 433091 for further information.

CREAM TEAS Served on Tockington Green or in the Chapel on Spring Bank Holiday Monday May 2nd 2.30-5.00pm

CONTACT: Rev Pete Brazier Tel 01454 418176,

e-mail pete@thebigfishcafe.co.uk

THE VINE, AWKLEY

The Vine, Pilning Street, Awkley

We meet in a relaxed, informal manner for worship, prayer & conversational Bible studies incorporating Communion, on Sundays at 10.30am and Mondays and Wednesdays at 7.30pm We also visit other Churches and events so please check our Notice Board or contact .

Mike and Barbara Matthews, tel. 07512 917229 or email:
thevine_awkley@hotmail.com

THE OASIS CHURCH, OLD DOWN

Apr 3	6.30pm	Paul Ashford
Apr 10	6.30pm	Terry Wood
Apr 17	6.30pm	Vision of Hope
Apr 24	6.30pm	Alan Tarling

Each Thurs at 7.30pm Prayer & PraiseTime

For further information please contact **Ceri Morgan-Davies** 413043

Paul Ashford, 07774 110 814 or email: **Paul@CalebGroup.net**

AUST EVANGELICAL CHURCH Family Worship 11.00am

For more details contact Ann Roberts 632564.

e-mail ann.roberts@bylanes.co.uk

LITTLETON EVANGELICAL CHURCH

Evening Worship every Sunday at 6pm for details tel. 413247

RC CHURCH OF CHRIST THE KING, Thornbury -

Sun 8.30am Mass 11.00 Family Mass

Monday-Friday Daily Mass at 10am

Tel 01454 412223 www.ctk-thornbury.org.uk

SOCIETY OF FRIENDS (QUAKERS), Thornbury

Meeting for Worship Sundays 10.30-11.30: The Hanover Room, The Chantry, Castle St. Wheelchair accessible. Children welcome with prior notice.

Local contact: Roger Howell at rogerhowell2@talktalk.net 01454 415035

National: www.quaker.org.uk Bristol area: www.bristolquakers.org.uk

Diary Dates for April 2016

The information given below is believed to be correct as we go to press.

1 st Fri	PreSchool Egg Hunt until Apr. 10 th Thornbury Carers Support Group Computer Clinic every week	1.00-3pm 7-9pm	Chy MH
2 nd Sat	Coffee Morning Hermitage Ensemble Russian Choir	10.30-12.00 7.30pm	MH StM
3 rd Sun	Bingo every Sun at Sports & Social club	7pm	
4 th Mon	Childrens Movie Club Computer Clinic every week Monday Movie	10am 2-4pm 7.30pm	StM MH StM
5 th Tue	Friends of Daldry Gardens Coffee Morning	10.30-12.00	DGCL
6 th Wed	Computer Clinic every week Holy Communion at Daldry Gardens Table Tennis O.P.H.S.Behind the Scenes at the Palace	10.00-12.00 2.30pm 7-8.30pm 7.30pm	MH DGCL PH OMC
7 th Thu	Thornbury Farmer's Market Coffee Shop	9-1.00pm 10.00-12.00	OS+
8 th Fri			
9 th Sat	Coffee Morning Coffee Morning St Peters Hospice Coffee Morning	10.30-12.00 10.30-12.00 From 10am	AVH PH TMH
12 th Tue	Friends of Daldry Gardens Coffee Morning Memory Café W.I. 'Keeping Abreast' Aust PC Annual Meeting	10.30-12.00 10.15-11.45 7.30pm 7.30pm	DGCL TMH PH EVH
13 th Wed	Beat Surgery Table Tennis	10.30-11.00 7-8.30pm	OS+ PH
14 th Thu	Coffee Shop Olveston Toddlers	9.00-12.00 1.45-3.15	OS+ MH
15 th Fri	Great Olveston Wine Challenge	7.30pm	PH
16 th Sat	Coffee Morning Spaghetti Quiz	10.30-12.00 7.30pm	MH StM
18 th Mon	Severn. Vale. Flower Club Practice Monday Movie Extra	1.30pm 7.30pm	AH StM
19 th Tue	Friends of Daldry Gardens Coffee Morning Tennis Club A.G.M.	10.30-12.00 7.30pm	DGCL PH
20 th Wed	Table Tennis Bosom Buddies at Swan Inn Thornbury	7-8.30pm 7.30pm	PH

	Jazz at the White Hart Olveston	8.30pm	
21 st Thu	Thornbury Farmer's Market Coffee Shop Olveston Toddlers	9am-1pm 9.00-12.00 1.45-3.15	OS+ MH
22 nd Fri			
23 rd Sat	Coffee Morning	10.30-12.00	MH
24 th Sun	Aust Quiz Night at Boar's Head	7.30pm	
25 th Mon	Severn. Vale. Flower Club Open Meeting	6.30for7.30	AH
26 th Tue	Friends of Daldry Gardens Coffee Morning Memory Café Olv. Parish Council meeting	10.30-12.00 10.15-11.45 7.30pm	DGCL TMH AP
27 th Wed	Table Tennis Alv. Local History Soc	7-8.30 7.30pm	PH AMC
28 th Thu	Coffee Shop Olveston Toddlers	9.00-12.00 1.45-3.15	OS+ MH
29 th Fri	Thornbury Arts Trail until May 8th		L
30 th Sat	Coffee Morning	10.30-12.00	MH
Looking ahead to May			
15th	Queen's 90 th Birthday Pageant		S+M

KEY: AC Aust Church; AH – Armstrong Hall; AMC – Alv Meth. Ch.; AMH- Alv Meth. Hall; AP – Alexandra Pavilion; AVH – Aust Village Hall; ; CH – Cossham Hall; Chy – Chantry ;CS Castle Sch.CTK Christ the King DGCL – Daldry Gardens Community Lounge; EVH – Elberton Village Hall; LVH Littleton Village Hall MH – Olv.Meth.Hall;OMC Olv Meth Ch OS – Olv. School; OS+ – Olv. Stores; OV – Olv Vicarage; PH – Olv Parish Hall; StM St Mary's Church, Olv.; StMA Almondsbury Church StMTSt Mary's Thorn TCh Tock Chapel; TBCh - Thornbury Baptist Church; TMH – Thorn. Methodist Hall; ; WR – Wesley Rooms.WHLS White Hart L-O-S

Contact details for any clubs or organisations in the Meeting Point area can be found in the Meeting Point Directory on the community website: www.olvostonandaust.com. If you would like to update your organisation's details, please email: meetingpointsecretary@olvostonandaust.com

Advertisements Neither Meeting Point, its editor, nor management committee accept any responsibility or give any guarantee in case of any dispute or claim as to quality, condition or delivery of commodities or services advertised in this magazine. It is not to be taken that publication implies recommendation. It is always advisable to check prices when ordering goods or services.

Views expressed by contributors are not necessarily those of the editor or Meeting Point magazine.

Copyright Meeting Point 2016. Copyright remains with the author(s) and Meeting Point. No part of this publication may be reproduced or transmitted in any form without the prior permission of the copyright owners.

Meeting Point is printed by **Bristol Business Centre**.