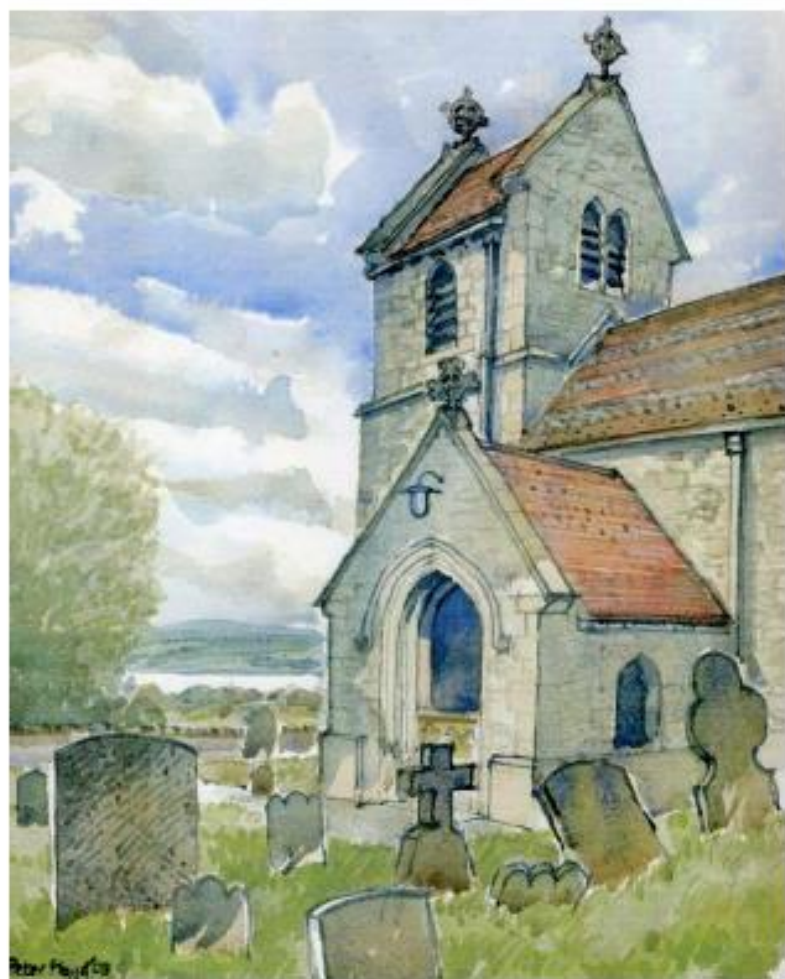
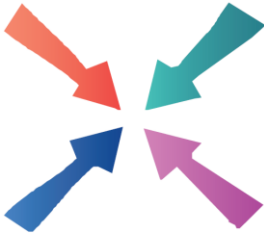


Meeting Point



April 2018



Meeting Point

Volume 42, Number 7, April 2018

The community magazine for the villages of Olveston, Tockington, Old Down, Lower Hazel, Awkley, Ingst, Aust, Elberton and Littleton upon Severn

From the Editor

EDITOR:

Marelin Orr-Ewing
Courtlands
Olveston
Bristol BS35 4DU
Tel: 01454 610081
meetingpointeditor@gmail.com

ASSISTANT EDITOR:

Angela Williams
Ashlea
Haw Lane
Olveston
Bristol BS35 4EG
Tel 01454 612850
meetingpointmagazine@gmail.com

ADVERTISING:

Nigel Dawes
Cromwell House
The Street,
Olveston
Bristol BS35 4DR
Tel: 01454 201558
julie.dawes@tiscali.co.uk

Publication date
1st of each month

Material for May 2018
to the Editor or Deputy Editor
by 9th April 2018.

This month I am looking forward to joining the walk that is being organised to get us out and about using local footpaths. I also hope to take my grandchildren to the Fossil Foray at Aust, which is one of the April offerings from the A Forgotten Landscape team. I will definitely attend the Auction of Promises at Olveston School – I've no idea what I will bid for, but it will be fun and it is in a good cause.

For some time now we have had regular articles on Birds provided by Trevor Cook. These have been very popular but we need to give Trevor a break! A new series on Creatures in your Garden is starting this month and these articles will alternate with items from the Making Space for Wildlife Project.

Our profile this month is of Mike Hawkins and is a tribute to all his hard work and commitment during the 15 years he served on Aust Parish Council.

Marelin

The cover picture of St Mary de Malmesbury, Littleton on Severn, is by Peter Floyd

Meeting Point Founded in 1976 by the Anglican and Methodist churches in Olveston, near Bristol

Meeting Point magazine and Meeting Point Directory are online at the Community Website: www.olvestonandaust.com

News from St Mary's

Debbie Harries



Easter Services

Our Maundy Thursday Agape takes the form of a Passover meal and Holy Communion at 7.30pm. There is a Good Friday Walk of Witness from Tockington Methodist Church at 12.30pm, before the Final Hour at 2pm at St Mary's. We then have services on Easter Day, beginning at 6.30am up at The Brake on Vicarage Lane, with Holy Communion at 8am and 10am at St. Mary's.

We look forward to celebrating Easter with you.

Pasta Bake Quiz

Our next quiz is on Saturday April 28th at 7.30pm in church. Pasta bake is on the menu. Tickets still only £5 per person. There's a maximum of 6 in a team. Book early to avoid disappointment.

Contact Debbie at oboe-debbie@live.co.uk

Rose Ball

Our Annual Ball is on Saturday 14th July in the marquee at Tockington Manor. The Rose Ball begins at 6.15pm for 6.45pm with carriages at midnight. Dinner is by Napier Catering and dancing once again to the superb Manhattan Nights. The evening is in aid of the Tower Fund and 'Maggie's Charity'. Dress code black tie with a floral touch! Tickets £65. Please contact Julia Johnstone on 07966 302762

From the Registers of St Mary's, Olveston

- 12th February Funeral Service followed by Cremation of Bernard Fennell
- 19th February Funeral Service followed by Burial in the Churchyard of Vivian Lloyd Roberts
- 21st February Funeral Service followed by Burial in the Churchyard of Pamela Joyce Budd

From the Registers of St John the Evangelist, Elberton

- 22nd February Funeral Service and Burial in Churchyard of Ruth Grace Taylor

The Wizard of Oz

Barbie Davies



The Parish Players' production of 'The Wizard of Oz' certainly went with a whiz. A cracking pace was set by experienced director Linda Evans, musical director Chloe Allsopp-Jones and their well disciplined team of cast and crew!

This show was everything an audience might hope for in a performance of the much-loved classic. Nowadays, audiences constantly compare amateur shows to professional productions and, of course, the film itself. Has Judy Garland got a childhood double? Not only was Isobel Lambie outstandingly professional and totally charming, but she looked bewitchingly like the original Dorothy. Comparisons here did not disappoint. Nor did they with David Proud's wonderfully athletic and winning Scarecrow, Paul Dimery's heartfelt happy rendering of Tin Man, and Ray Hale's cuddly, comic and convincing Lion. And what music they all made – as did the whole cast, of which the majority were very talented and committed children who delighted us, not only with their acting and dancing skills, but with their genuine enthusiasm and total immersion in the plot and characters. No wonder they held the audience's attention so very well.

The whole production oozed *joie de vivre* and colour, whether from the truly picture book set created by Andy Black and his team, the rainbow lighting from Richard Churchill, or the glorious array of costumes from vibrant stripy socks of the munchkins to skeletons or beautiful classical ballerinas – all carefully co-ordinated by Cath Chappel. In the very capable hands of the Jones family,

the accompaniments to the well-loved songs bounced along and sensitively encouraged both chorus and soloists.

There were many moments on stage made memorable by a perfect blend of visual effects, emotional sincerity and acting or dancing skills. In particular, the snow scene was a real triumph with ample snow falling against a midnight sky and ballet (including some lovely pointe work) choreographed by Jill Harris and danced most sensitively by the young ballerinas clad classically in white.

Comedy too was crisp, lively and inventive. The shrinking of Amy Sunderland, the wonderfully wicked witch, was a hoot. Half way through the process, one of the children became the escaped half-shrunk witch who had to be chased round the hall and back into the magnificent cauldron. The wizard himself, played by Richard Newley, made a very amusing eccentric.

Between them the kindly good witch and Linda Evans waved a magic wand across the whole production which was absolute magic; and not in the West End or at the end of the Rainbow, but in tiny Tockington.

** The reviewer saw Isobel Lambie play Dorothy on Saturday 17th February. On alternate nights, Dorothy was played by Aggie Barnes - to great acclaim!*

Police Report

PCSO 9317 Kelly Dimery

As some of you may already know, PC Pete Wozniak retired back in December. There is now a new Beat Manager for the area - PC 4252 Ross Calderwood. Ross was previously a Response Officer who then moved onto an Operations Team for a while and has now moved to this Beat Manager position. I am sure you will see him around.

Due to shortage of space this month the crime report for the first quarter of 2018 will appear in the next edition of Meeting Point.

Next Beat Surgery Wednesday 4th April Olveston Stores 10.30 – 11.15am

Craft Sessions in Littleton Village

We are having a summer break to get out into the garden! We have had some lovely chats and knitted many jumpers for children in Gambia as well as a few hats for babies at Southmead Hospital. We will start again on October 4th 10am – 12 noon and afterwards on the 2nd and 4th Thursdays of each month. Come and join us in the Autumn!

Village Ramblings

Roderick Offer

Counting our blessings we should all appreciate the fantastic network of footpaths within our parish, from which it is possible to see many important historical features. Most footpaths originated as routes used by country folk to get to their properties, get to work, go to Church or access their water supply.....there were a large number of wells and pumps in the parish, some of these still exist. Historically, rights of access including those to water supplies were protected under the Vestries Act and Inclosures Act in the mid-1800s. This protection has continued and explains why there are small areas of Common Land and land with Village Green status within the Parish.

The notable areas of Village Green within the Parish are Tockington Green, The Old Down Recreation Ground (designated for local use since 1844 when it was recorded as an area for exercise and recreation) and The Quarry to the east of Old Down Hill. These areas together with other smaller parcels of common land and village greens were re-registered under the Commons Registration Act 1965. A Village Green is protected in law and maintained as an area for 'lawful sports and pastimes' for the benefit of local residents.

There are also a number of interesting 'water features' in the parish. The duck pond in Olveston served the mill at Olveston Common, the Tockington Mill Leat/ Rhine served the Mill in Tockington, the 'Sheep Washes' in Lower Hazel and Washingpool Road, the triple entry Cart Wash Pond in Sheepcombe and the Moat at Olveston Court are all important historical features. There are also a number of lime kilns particularly at Sheepcombe Brake and Littledown.

The stream running through Sheepcombe valley used to be dammed with the aid of adjustable timber sluices to flood the valley in winter and ice could then be collected and stored in the ice houses at Tockington Manor and to the East of Brook Farm in Tockington. The grooves in the stone work that held the 'stop logs' can be found in the outlet from the Washingpool Hill Sheep Wash. Sadly the stone work is falling into disrepair. Remains of a dam/sluice exist at the rear of Brook Farm.

It is to be hoped that all these features can be preserved for future generations to give an insight into our local history. The South Gloucestershire Council's Supplementary Planning Document published in 2013 covering the Olveston Conservation Area mentions the general loss of our historical landscape and walling. Should these features be included in a new edition of the excellent Design Statement produced in 2004? It would be good to see this publication updated. Knowledge of the past usually helps us to make sensible decisions for the future.

Olveston and Tockington W.I.

Vicki Townsend

In February we enjoyed an entertaining talk from Michael Malaghan entitled 'It shouldn't happen to a writer'. Michael had started his career as a reporter on a local newspaper and then went on to write scripts for plays, TV soaps and latterly novels. Also in February a party of members enjoyed a conducted tour of the Concorde Museum at Filton. Further trips are planned to The Royal Mint at Llantrisant in May and Cardiff Castle in June. Members were pleased to hear that the bench seat, donated by the W.I. and sited outside the Olveston Village Stores, was being well used.

The meeting at the Parish Hall on Tuesday 10th April at 7.30pm, to which visitors will be very welcome, will include a talk by Tony Griffiths on 'The Art of the Magician'.

Ringing the Bells

Sue Farr

Did you know that bell ringers in rural church towers are becoming an endangered species? You might not think this is the case if you live in Olveston, as we are lucky to hear the bells at St Mary's ring out for practice, for weddings and to call people to Worship on Sunday mornings. However, Philip Coward, who is our Master Ringer, tells me that that he has to gather ringers from all around the area to get a team together and that in the future he may not be able to fulfil commitments for weddings and ceremonies unless new volunteers come forward for training.

Anyone can learn, all ages are welcome, so please consider whether this is something you could do to help keep our bells ringing. If you are interested contact Philip on 281444 or awkley@btinternet.com.

Severn Vale Arts Trail

Annual Showcase Exhibition Thornbury Town Hall 20th – 28th April
10am – 4pm

The Arts Trail runs from 4th – 13th May. Watch out for brochures widely available from Thornbury Town Hall and outlets in the surrounding towns and villages. More in next month's Meeting Point.

Enquiries: janeparfitrail@gmail.com or eryl.daniels@gmail.com

Bernard's Bruising Fundraising Adventure!

Bernard Amos



Some readers may have recently seen me on TV, or heard me on the radio, talking about my adventure to raise money for Cancer Research UK (CRUK). At the age of 71 and never having seen a bobsleigh before, I was entered into the European Seniors Bobsleigh Cup at Igls in Austria at the beginning of March, riding as brakeman to an old colleague. The various ex-Olympic and World Champions who also took part were impressed at my stupidity!

We had to do eight runs, including qualification and the race and I thought I might have a gentle introduction from maybe halfway down. But, no, we went right from the

top straight away! There were no seats, belts, suspension or any other creature comforts and the speed was terrifying. The ice is bumpy and at the finish we were doing 80mph in a narrow gully. The G forces on one 360 degree curve forced my head right down between my legs and I couldn't breath....then, as the pressure relieved a little, we slammed right into the next turn and so on, gathering speed all the way. The whole thing was very dangerous (we saw quite a few accidents) and unbelievably quick. I cracked a rib and have massive bruises on my hips and shoulders.

It was all worthwhile, however, in order to raise money for CRUK and enable more research into this horrible disease, which seems to be afflicting so many of my friends, both in the village and in my wider circle. So far I've raised over £1500. If anyone else would like to donate, my 'JustGiving' page is Bernard-Amos1.

Dr Margaret Lush

Dr Brandon Lush contacted Meeting Point a short while ago to let us know that his wife, Dr Margaret Lush, had died on 25th February after a long illness, bravely borne. The couple had been the subjects of a Meeting Point profile in July 2017, prompted by the celebration of their Platinum Wedding Anniversary. Readers were given an insight into their lives and many achievements. Our condolences go to Dr Brandon Lush and all of the family.

Cancer Research UK: Concert

On Saturday 14th April, Thornbury and District CRUK Committee is holding a Concert in the Thornbury United Reform Church and all are welcome to attend. Doors open at 7pm and drinks will be served during the Interval.

'The Poets Quartet' will play various works by Dvorak, Bach, Elgar, Massenet and, would you believe it, The Beatles? A retiring collection will be taken towards the valuable work of Cancer Research UK. This promises to be a wonderful musical evening and we look forward to welcoming you all.

.....and Coffee Morning

The Thornbury and District CRUK Committee is holding a Coffee Morning at the Alveston Methodist Church Hall on Wednesday 2nd May between 10am and 12noon. There will be homemade cakes, jams, chutneys, used books, jewellery and crafts for sale. Admission is £1.50 which also includes tea/coffee and biscuits

Aust Parish Council Matters

Tim Pyper (austparishcouncil@googlemail.com)

The Council's Annual Meeting

The annual meeting will be held at Elberton Village Hall on Tuesday 10th April, at 7.30pm. All will be welcome.

Resurfacing works

Sometime over the next few months, Elberton Road will be closed between the B4461 and the village hall for resurfacing – expected to be for 3 days – and Village Road Littleton opposite Corston Farm for water supply work – also expected to be for 3 days; and Bilsham Lane will be closed for up to 3 weeks between Ingst and Northwick Road. The closures may be any time in the next 18 months or so.

Fashion Show in Thornbury

Thornbury Music Theatre Group and M&Co, Thornbury, are teaming up to put on a Fashion Show in M&Co on Tuesday April 17th at 7.30pm.

Tickets £4 from M&Co. For more information contact 01454 413125

South Gloucestershire Council Local Plan Consultation, February 2018

Non-Strategic Development – Will Olveston Parish be in the frame?

Peter Floyd

The government is under enormous pressure to increase the supply of new houses. A new joint strategy for the West of England (former County of Avon) area requires the provision of 105,000 new homes between 2018 and 2036. South Gloucestershire's share is 32,500 and South Gloucestershire Council is currently consulting on where these houses should go.

It is proposed that the rural villages, some of which are within the Green Belt, should be considered for limited growth – this includes Olveston Parish – and views are being sought on which villages would be suitable. Sites for a total of 1300 houses both inside and outside the Green Belt are being sought with a contingency of a further 500, though with up to 35 villages to choose from, this need not be too onerous. With over half of South Gloucestershire in the Green Belt, some development in Green Belt locations seems inevitable.

The Local Plan sets out a careful approach, with sites to be assessed from landscape, land use and access points of view and explains South Gloucestershire Council's intention to work with local communities in their selection. This is a sympathetic approach in adding to small villages. Once the consultation process has been completed the Council will produce the final Plan which will show areas suitable for development. With the present pressure for housing, development will surely follow.

South Gloucestershire Council is the Local Planning Authority and necessarily writes from the 'top down', whilst in villages to be expanded there is nearly always understandable serious antagonism and local resistance. "It's bound to be awful isn't it?" We will expect the development to be the usual, huge, anonymous housing estate; making the queues at the shops and doctors impossible; adding to the already congested road system; ruining the rural character of the area and possibly, reducing the value of our property.

It will surely be better if we make our own proposals – from the 'bottom up'. Most villages acknowledge the need to grow a little, allowing those born there to have houses, keeping the community and local services lively. Where there is going to be development, we need to ensure there is provision for some affordable housing and here we can draw on the key recommendations from The Olveston Parish Housing Needs Survey.

The bottom of SGC's range for sites is 10 houses, still difficult enough for a small village to absorb. One house at a time, as in the past, would be the best,

but acknowledging reality, several small groups of houses, of different sizes, built over several years might be acceptable, allowing the community and its services to expand slowly to absorb the newcomers comfortably. However, we all need to be realistic and accept that change will happen.

The Parish Council has formed a group (South Gloucestershire Planning Consultation Review) with Richard Lloyd acting as chair. This Group will have members of the OPC Planning Committee with others and will propose a response to the consultation for the Parish Council to consider.

The consultation closes on 30th April. You need to make your views known, it is important for us all to respond individually, so please read the consultation at www.southglos.gov.uk/newlocalplanfeb2018

Oveston Parish Hall

Pat Savage

The recent Fish and Quiz evening was once again a great success. Fifteen teams competed for the Trophy, Prosecco and chocolates and the winners were 'Jack High'. The event raised £300 which is being donated to Macmillan Cancer Support. Thank you to all those who took part.

Free Forest Taster Sessions

At Stepping Stones Nursery in Elberton we are very lucky to have woods in the grounds and are able to offer forest sessions. Forest and woodland areas are well known for helping children gain knowledge and understanding of the natural environment, improving their self-confidence and developing all areas of the curriculum. Our weekly forest sessions provide children with an opportunity to do just this. Safety is an important issue; the children are taught the rules before entering the woods and the leaders have forest skills training.

To promote this wonderful outdoor learning experience we are offering up to three free sessions on Wednesdays in April for any new child aged 2 – 3 years. Forest activities will include climbing & hiding, den making, mud painting, bug hunting, crafts and other activities. Songs, stories and snack are held in our den. If you would like to know more or would like your child to the experience for themselves, free of charge, the excellent outside learning opportunities we offer, please contact Gill on 07484 508998 or gillpowell1961@hotmail.co.uk.

An April Tweet

Dr Rovert

As many of us know, our garden bird population has been declining for some time. Research has shown that that this decline is caused primarily by a reduction in natural habitat brought about by the need for greater efficiency in agriculture. So we are indeed grateful that South Glos.



Council, through its Parish Councils, is promoting a Biodiversity Action Plan, one aspect of which is to restore the wild life habitat in our area by encouraging garden owners to cultivate plants which are ‘wild life friendly.’

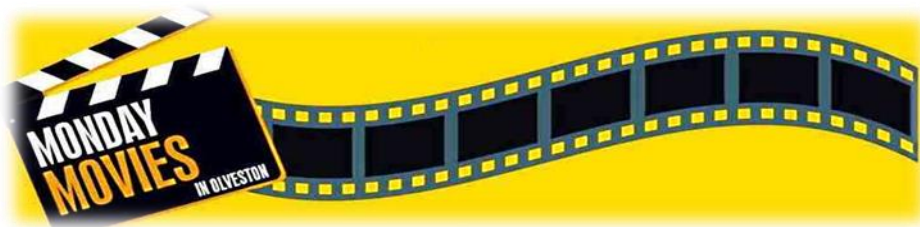
But I have to report that this will not solve the problem – not in the West Country anyway. Recent research has shown that there is a much more sinister reason for the decline. Several years ago (*as you may remember*) a ‘wonder bird food’ was introduced into our market: Japanese Walnuts. Everyone loved them, including the birds: they sang louder, their plumage was brighter and they seemed friendlier. But, shortly after this, the decline in bird numbers accelerated and some disappeared almost entirely. The research suggested that the Japanese Walnuts were the cause because they were probably programming the birds to fly east. The Japanese Walnut tree (*Juglans ailantifolia*) is native to Japan and is unhappy growing anywhere else, so it was possible the nuts were sending some kind of message to the bird saying “I don’t like it here – take me home.”

The researchers then travelled to East Anglia to test their theory, and sure enough they discovered that, far from decreasing, the number of small garden birds in that region had been *increasing* over the last few years! Several residents commented on this and one reported that the blue tits always seemed to prefer nest boxes that looked out over the sea to the east.

The researchers then decided to see if they could solve the problem. They set out feed trays containing Oregon Filberts, these are the fruit of the Oregon hazel, a tree native only to the US state of Oregon. Would the birds eat them? Would it programme them to fly west? Would they return to South Glos?

So far it’s been partly successful: YES, the birds are eating them. YES they are flying west. YES they are coming to South Glos. But they are not the species that left us. The birds coming in are mainly avocets and bitterns! So here’s the challenge for us: What do we do to make them feel at home? Providing the right habitat is the top priority and so, if you’d like to help, come along to Olveston Stores at 10.00 a.m. on April 1st to collect a free supply of wet reed plants for your garden. Let’s show we welcome our immigrants from the east!





APRIL PROGRAMME

Trevor Anderson

MONDAY MOVIES (7.30pm on the 1st and 3rd Mondays of each month)

Mon 2 Apr: A working mother is drawn into the fight for women's rights. She and her friends become foot soldiers in the early feminist movement. Her demands for equality result in her being fired from her job, thrown out onto the streets by her husband, and banned from seeing her son. But the sisterhood rallies round to support her and together they continue their heart-breaking and inspirational fight to be heard. An important story told without stylistic fuss or frills about the women who were willing to lose everything in their fight for equality. (2015, 1h 46m, Cert 12)

Mon 16 Apr: A San Francisco detective has left the police force because he believes his fear of falling (acrophobia) caused a colleague's death. When an old college friend pleads with him to investigate the eccentric actions of his wife, the detective's life takes a new obsessive course from which he never recovers, and which leads him to follow this mysterious woman to the death - but whose death? The twists and turns of the plot take us on a roller coaster ride of emotional turmoil in what has been described as "one of cinema's greatest-ever classics." (1958, 2h 8m, Cert PG)

CHILDREN'S MOVIE CLUB (10.00am most Mondays in the school hols.

No films in April. Boo.)

All the films are shown in **St Mary's Church, Olveston** and doors open 30 minutes before the start. Refreshments are available at all the shows, plus licensed bar in the evenings and popcorn and soft drinks in the mornings.



We make no charge for entry, but we do value and appreciate a small **donation** towards church running costs if you have enjoyed the show.

For copyright reasons we can't name the films here, but if you join the Movie Club we'll send you titles and full details by email. It costs nothing to join – just email me at trevoranderson@btinternet.com

Come for a Walk?

Rod Williams

You may have read the article in last month's Meeting Point about the joys of walking and the huge network of footpaths that we are blessed with in this area. So, to fire you up and get you walking the local footpaths on a regular basis, there will be an organised walk on Saturday 14th April, starting at 1pm from outside the White Hart, Olveston. Just turn up, all are welcome.

The walk will last about 2 hours with some medium to steep hills and several stiles. If you would like to bring a dog which you can't lift over a stile, please phone me on 612850 to check that the route is suitable.

A Forgotten Landscape

Fossil Foray Saturday 7th April 3pm – 4.30pm Aust

Directions and location given on booking.

Come to Aust and be a fossil detective with local expert Ed Drewitt. The fossil-rich rocks contain the ancient remains of sea-going animals that once lived in our region, 200 million years ago. Wear suitable outdoor shoes (and boots if it has been wet), clothing and sun cream. Bring a trowel if you have one, old newspapers to wrap your fossils and bags to carry them. Children are welcome but must be accompanied by an adult. Booking essential. No dogs except guide dogs. <https://fossilforayapril.eventbrite.co.uk>

Grafting training with Les Davies Sunday 15th April, 10am 3.30pm.

Lawrence Weston Community Farm, Saltmarsh Drive, Bristol BS11 0NJ

Learn the basics of fruit tree grafting from Les Davies (West Countryman www.westcountryman.co.uk). Learn from Les' decades of experience working in orchards. We'll cover whip-and-tongue grafting, bud grafting and top grafting. This will be a fun and informative day but will involve the use of sharp objects so is for adults only. Graft up your own apple tree to take home! This event is free, but please book your place at <https://graftwithles.eventbrite.co.uk>

Dates for your Diary:

Sunday 6th May - Severn Beach Sculpture Launch. Find out more at <http://www.aforgottenlandscape.org.uk/events>

Saturday 14th July - The Severn Festival will be happening again this year. We'd like as many people as possible to get involved! If you'd like to have a stall, perform, help out on the day, or do something else, please contact Emma at emma.cross@southglos.gov.uk or 01454 864 265.

Creatures in your Garden: Bees

Angela Daymond

It's a true sign of spring when you spot the first bumblebee of the season; a hungry Queen emerging from her hibernation. She'll seek food and then a suitable site to make her nest - somewhere dry and sheltered such as an abandoned rodent hole or tall grass or maybe a bird-box, she'll line it with animal fur or leaves for insulation.

Having mated in the autumn and storing the sperm over winter she'll now fertilise her eggs according to her needs. Fertilised eggs will become female workers, unfertilised will become males. Unlike their cousins the honeybees, who build colonies of 50,000 or so, bumblebees limit themselves to only 50 to 400. No fancy geometric hexagons, more a haphazard collection of honey pots and wax cells. Once the nest is established with enough workers and food gatherers, the queen will leave her nest no more. Her children will attend to her every need. But this isn't so for all; some bumblebee species are known as cuckoo bees and, just like the bird, they'll take over a nest and force the resident queen to become a worker for her instead.



There is concern about the falling numbers of bumblebees, but so far research cannot give a figure as to just what the loss is. But as Pandora always asserts, there is always hope and there are things we can do to help. Try switching from annual flowers, especially anything labelled F1 hybrids which are beautiful but offer no nectar or pollen for our bees. Avoid double flowers where bees struggle to find the centre. Perennial flowers like lavenders will offer a wonderful source of food and you could let a bit of clover run in the lawn. These may not be as showy as some highly bred flowers, but the bees will love them and you can admire their iridescent wings and different markings instead. There are 24 species of bee to spot.

Mike Hawkins

Tim Pyper

Mike Hawkins has retired as an Aust Parish Councillor after 15 years; ten as the chairman. During this period he was very active representing the interests of Aust, Littleton, and particularly Elberton where he has lived since the early 1990s. He very effectively brought his extensive experience of lobbying Government and the European Commission on behalf of the motor industry to local politics; spearheading a number of successful local campaigns. His determination to do the right thing for the communities he represented made

him a formidable opponent as was quickly recognised by several South Gloucestershire Councillors.



In Elberton he worked hard to get speed limits and successfully supported a family trying to extinguish an infrequently used footpath through their garden. He was an early campaigner for better broadband in the village (which has now arrived at most properties in the village). On a larger scale he managed to persuade the Environment Agency not to renew the waste management licence for the Harnhill Landfill site when the operator applied for planning consent to extend it with the support of South Gloucestershire Council. This put an end to the horrible odour and the litter along Elberton Road that many will remember.

He actively opposed inappropriate planning applications in the Parish while at the same time supporting those that benefit the villages. This included helping many villagers develop their properties. He is particularly proud of the support he gave to a local family, helping them get planning consent for a new house on their own land.

Mike was very involved in the successful campaign to stop an office development at Whale Wharf in Littleton and later the unsuccessful opposition to the use of the site as a residential children's activity centre (the site is now subject to a new application for offices/light industrial units). In Aust he led the opposition to a proposed permanent travellers' site at Greenacres and subsequently ensured the remediation of the site. In Elberton he mobilised the village to oppose the development of business units on the former nursery site. Outside the Parish he supported the opposition to the wind turbines in Ingst.

His legacy to the Parish was much wider than campaigning on new development. He negotiated for the purchase of Woodwell Meadows in Littleton as a local wildlife site and supported residents in Aust whose homes flooded six times over a 13 year period to get a solution. He chaired the local safer stronger community group for many years and is vice-chair of the Oldbury Power Station site liaison committee.

Mike was determined to do the best he could for the three villages in the Parish and his record illustrates just how effective he was. The Council and the Parish were fortunate to have such a capable and energetic Councillor and Chairman, and on a personal note, I should like to say how much I enjoyed working with him as clerk.

Old Down Cricket Club

Tony Gardner 07889 727729

150 Club Winners March 2018:

£50 Bill Finch
£15 Audrey Evans
£5 Roger Rowen

Latest £25 Bonus Ball Winners:

10/02/18 John Welsher
24/02/18 Russell Knight
03/03/18 Tony Williams

The Club is always on the lookout for new players both Junior and Senior. If you fancy playing during our 175th Anniversary Year, please make contact for details of Pre-season Nets which commence at Marlwood School on Tuesday 3rd April 7.30- 9.30 and thereafter at Castle School on Tuesdays 10th, 17th, 24th April & 1st May 7.30 - 9.30.

Our group of Tea Ladies also need supplementing, so if you could spare a couple of Saturdays during the season to help, please let me know.

Marlwood School Reunion

Are you a former Marlwood pupil celebrating your 50th birthday this year? A group of former pupils is organising a reunion on the evening of June 9th 2018 at Marlwood School and are appealing for class mates who started at the school in September 1979 to get in touch. They've booked the drama hall at Marlwood and there will be 80s music, a bar and food. They want as many former pupils as possible to come along and have a good time.

For more information and to buy tickets visit the Facebookpage *Marlwoodschooll reunion class of 84-86* or contact the organisers at *Marlwoodreunion@outlook.com*

Litter Pickers.

Rod Williams 612850

Please meet at the Parish Hall car park at 1pm on Saturday 7th April.

The Apprentice and his Sorcerer.

Olveston Parish Historical Society talk. Open to all.
Wed. 4th April 7.30pm, Olveston Methodist Church,
£2 for visitors. www.olvoston.com/historical-society

In 2014, Gareth Williams, former Dean of Medicine at the University of Bristol, gave us an amazingly enlightening and moving talk on the history of polio. Now he's going to tell us about local Berkeley medical man Edward Jenner and his relationship with one of the most distinguished scientists and surgeons of his day, a man of boundless curiosity, John Hunter.

His talk is called **Edward Jenner and John Hunter: the Apprentice and his Sorcerer**. It will be full of interest, beautifully illustrated and entertaining - with humour and occasional skulduggery thrown in!

Olveston & Tockington Tennis Club

Martin Dawes

We are offering Junior Coaching for Primary School age children with Lucy Thomas, a qualified LTA Tennis Coach on Thursdays from 4.30pm: 12th April – 24th May and 7th June – 19th July.

Just turn up and pay for the first session and, if you enjoy it, you will be asked to pay in advance for six sessions at a time. We have a lovely new Clubhouse for parents to relax in while the kids have fun on the courts! For further details please contact: Lucy.thomas@blueyonder.co.uk or www.otctennis.co.uk

St Peter's Hospice - Spring Fling Coffee Morning

St Peter's Hospice Severnside Support Group would be delighted to welcome you to the Spring Coffee Morning in the Thornbury Methodist Church Hall on Saturday 14th April, 10.00am – 12 noon. Home made cake stall, books, crafts, bric-a-brac and a raffle.
Entrance £3.00 to include tea or coffee and a cake.

Auction of Promises

As you will have seen in last month's Meeting Point, Olveston School Parents, Teachers and Friends Association (PTFA) is holding an 'Auction of Promises' on Saturday 21st April. Please note a change to previously advertised times, doors will open at 7:30pm for an 8:00pm start. A bar will be available (including soft drinks) so come along and make a night of it!

The event is being held to raise money to revamp the outside play area at the school. Thank you to those who have already generously donated – we have received some great donations already but we need more!! Ideas for promises include: Meal vouchers, Gardening services, Babysitting services, Ironing or Housework, Dog walking, Car washing etc.etc.

Please email foospta@gmail.com or contact the School Office (01454 613299) with your Promise donation. Further information on the event will be given on the Friends of Olveston School PFTA Facebook page.

You can still join in the fun and help raise funds even if you cannot make the event, as we will be providing brochures to enable you to send in proxy bids – please contact us if you would like a brochure.

Severn Vale Flower Club

Jo Whiteman

Open Meeting Monday April 16th Armstrong Hall Thornbury. Doors open at 6.30pm for 7.30pm. There will be refreshments, a raffle, plant and sales tables. 'Around the World the Floral Way' is the title of the floral demonstration to be given by Andrew Lloyd. For tickets and more information the contact numbers are 01453 811089 or 01454 885213.

Pilning Players present Liberty Hall

In association with Stagescript Ltd, The Village Players present this farcical comedy by Robin Jennifer Miller. Wednesday 9th to Sunday 12th May in Pilning Village Hall at 7.30pm. Tickets are £6 for adults or £4 for concessions.

It may seem rather early to advise you to book your seats now, but rehearsals are well under way, with great hilarity, and seats are already being booked. We wouldn't want you to miss out!

Call our Booking Office now on 01454 633786.



Olveston Parish Matters

Pat Savage
(pat.savage@olvestonparishcouncil.gov.uk)

Annual Parish Assembly 2018.

The Annual Assembly is booked for May 1st from 7:30pm at the Parish Hall. The Agenda is being finalised and we are awaiting confirmation from the provisional keynote speaker. More details will be publicised on the Parish Website, but please come along as it is an ideal opportunity to hear what the Parish Council has been doing on your behalf.

Monthly Surgeries.

The first surgery in its new format was held on Saturday 17th February and proved a resounding success. At least six Parishioners popped in and we were able to discuss their problems. Thank you to the Methodist Hall Committee for their warm welcome and coffee. Surgeries are on the third Saturday of each month between 10:30 - 12:00.

Horse Riding through the Village.

Whilst the sight of horse riders does indeed bring a glow to the heart and reminds us of how lucky we are to live in such pleasant surrounding, may we draw the riders' attention to the fact that they should be no more than two abreast when riding both through the village and on the road.

Cyclists in the Village.

We do need to be vigilant as the evenings draw out and the cyclists nip through the village at amazing speeds. Unlike the riders on horseback the cyclists are quite silent...be alert!

Pot Hole Watch.

We are all aware of how dangerous they can be particularly when you land in one and do serious damage to your vehicle. You should always log pot holes with <http://www.southglos.gov.uk/transport-and-streets/streets> or on 01454 868000. We are also planning to organise a Pot Hole Watch! to log the incidents. If anyone is interested, please leave a message with the clerk@olvestonparishcouncil.gov.uk.

Calling all 16 to 18 year olds!

Would you like to have the chance to go on an all expenses paid course to help develop your personal and leadership skills? If so, then read on...



The Rotary Club of Thornbury is offering two places on the Rotary Youth Leadership Awards course which is being held in the Forest of Dean from 24 to 29 July.

This is your chance to enjoy a memorable and enjoyable opportunity to learn and develop.

The course will provide you with the chance to set your own goals and challenge yourself through a series of challenging, practical and theoretical tasks. You will quickly become part of the team and through your shared experiences make new friends. It is not an outdoor adventure programme but activities include a ropes course, canoeing, climbing, and orienteering. These challenges, backed by theory, are used to give participants opportunities to put their learning into practice in a safe and supportive environment.

All you need is to have a reasonable level of physical fitness and be prepared to push boundaries and challenge yourself. You will join 40 other students from across the greater Bristol and Gloucestershire region. The course is run by professional tutors, who run these courses throughout the year, at the centre in the Forest of Dean. Standards of safety and security of the students is paramount.

If you are interested and would like more information then please contact Guy Rawlinson, The Rotary Club of Thornbury Rotary, by email; guy.rawlinson@blueyonder.co.uk

You can also read about the opportunity online at:
www.rotary-ribi.org/districts/page.php?PgID=255720

Expressions of interest to be sent as soon as possible and no later than 30th April 2018.

Yours Faithfully

Lyall Drewett

Oasis Church, Old Down

Having had a conversation with a lady resident of Old Down just prior to Christmas, I was somewhat surprised to learn that she was not really aware of what our little Church was 'all about'. In view of this I felt it would be helpful to clarify our position, especially as many Churches across the country, and indeed the world, have distorted the teachings of the Bible by claiming it is out of date and irrelevant in modern society, although thankfully this is not true of all Churches.

Our Church was established in 1933 as a small Evangelical Church by a group of Methodists and became a central place of worship for many of the local community, where they would find the Word of God faithfully preached. Today the Church still keeps to those same principles, which entails upholding the teaching of the whole Bible and the message of the Gospel, as clearly presented by Jesus Christ, his Apostles and the respective writers of the Old and New Testaments. Whilst society has changed radically over the past thirty to forty years, we believe that the teaching of the Bible is as relevant today as ever, if not more so, and the spiritual needs of men and women are unchanged and can only be truly satisfied through a personal faith in Jesus Christ.

As we approach Easter, Scripture reminds us of the true significance of this special time of the year when we think of Jesus at the age of thirty three being taken by the occupying Roman Authority to Calvary to be crucified on a wooden cross, giving his life and showing his unconditional love for each one of us, promising to forgive all our sins through a personal act of repentance on our part. Again, as Scripture reminds us, Christ was buried but on the third day he rose from the grave and appeared to his disciples and many others before ascending to Heaven to be with his Father. The Bible makes it clear that Christ has promised to return to earth one day and it is this Glorious fact which encourages and strengthens Christians everywhere in a world where there is so much uncertainty and instability.

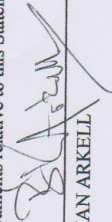

We at the Oasis Church are available to anyone who is in need of help and support or need of prayer for healing and guidance from the Lord. We extend to you all a very warm welcome to our small and loving fellowship.

**MEETING POINT
RECEIPTS AND PAYMENTS FOR THE YEAR ENDED 31st DECEMBER 2017**

	2017	2016	PAYMENTS	2017	2016
	£	£		£	£
RECEIPTS					
Balances at 31st December 2016 and 2015					
At Bank:			Printing	11459.00	11740.12
Current Account	2634.66	3240.30	Insurance	324.00	321.09
Clubs & Charities A/C	3015.99	3015.99	Postage	850.84	940.30
Advertisements	14229.50	14533.52	Stationery/Materials	74.00	94.40
Interest	6.05	-	Book Binding	45.00	45.00
Donation	-	30.00	Gratuities	-	81.98
			Corporation Tax	-	8.80
			Photocopying	5.40	5.40
			40 th Anniversary	-	1337.17
			2016 Meeting Point Directory	-	574.90
			Quiz Prizes	10.00	20.00

At Bank:				
Cash in hand	-			-
Current Account	4095.92			2634.66
Clubs and Charities A/C	3022.04			3015.99
		19886.20		20819.81

Documents relative to this Statement have been examined and found correct.

	12 February 2018	
BRIAN ARKELL	Dated	Treasurer

Church News

ST MARY THE VIRGIN, OLVESTON

Apr 1	6.30	Sunrise Communion (The Brake Vicarage Lane)	Rev David Moss
	10am	Easter Day Holy Communion	Rev David Moss
	6pm	No Service	
Apr 8	8am	Holy Communion	Rev Ann Lloyd
	10am	Morning Prayer with Choir	Mr Trevor Cook
	6pm	Holy Communion	Rev Ann Lloyd
Apr 15	8am	Holy Communion	Rev Helen Webb
	10am	Holy Communion with Choir	Revs D Moss & D Bone
	6pm	Evensong	Mr Trevor Cook
Apr 22	8am	Holy Communion	Rev Ann Lloyd
	10am	Fourth Sunday	Mrs Janet McBride
	6pm	Evensong with Choir	Mr Paul Harrod
Apr 29	8am	Holy Communion	Rev Ann Lloyd
	10am	Morning Prayer with Choir	Mr Trevor Cook
	6pm	Holy Communion(BCP)	Rev David Moss

Information on services correct at time of going to press.

Rev David Moss, 01454 415190; email: mossds@gmail.com

Verger: Mrs. June Robbins, 01454 617491

www.stmarysolveston.org.uk/index.html

PRAYER GROUP: Mondays, 2.45pm in the Chancel

WEDNESDAY HOLY COMMUNION: At 9.15am except 4th Wed when it is at Olveston Methodist Church

Morning Prayer 8.30am daily ex. Wed

CHAPELRY OF ST JOHN, AUST

Apr 1	6.30	Sunrise Communion as St Mary's	Rev David Moss
	9.45	Easter Service	Rev Ann Parker
Apr 8	9.45	Holy Communion	Revs A Parker/D Moss
Apr 22	9.45	Morning Prayer	Rev Ann Parker

Focal Minister: Rev Ann Parker, 01454 632329

e-mail annatdibley@btinternet.com

Church Wardens: Jon Burnett 633835 & Jenn Dickens 632035

ST MARY DE MALMESBURY, LITTLETON-ON-SEVERN

Apr 1	9am	Easter Day Holy Communion	Rev David Moss
Apr 15	9am	Morning Prayer	Mrs Tracey Black

Contact Mrs Tracey Black 01454 417660

ST JOHN THE EVANGELIST, ELBERTON

Apr 1	9am	Holy Communion	
Apr 8	9am	Morning Prayer	Judith Heybyrne
Apr 22	9am	Holy Communion	Rev David Moss

Contact Mrs Tracey Black 01454 417660

OLVESTON AND TOCKINGTON METHODIST CHURCH

Apr 1	10am	Tock. Ch.	Morning Worship with extended Holy Communion led by Mr Howard Wilson
Apr 8	10am	Olv. Ch.	Morning Worship led by Mrs Lesley Parker
Apr 15	10am	Tock Ch.	Morning Worship led by members of the Congregation
Apr 22	10am	Olv. Ch.	Morning Worship with Holy Communion led by Rev Pete Brazier
Apr 29	10am	Tock. Ch.	Morning Worship led by Rev Sandy Williams

NORTHWICK LUNCHEON GROUP: This meets at 12.30pm on Wed. 11th April
To book your lunch please ring 416528

TOCKINGTON LUNCHEON GROUP Thursday 19th April at 12.15

To book your lunch please phone 613241

COFFEE MORNINGS: Sats 10.30 - 12 noon in Olveston Methodist Hall

PRAYER MEETINGS Tuesdays 9.00-10.00 in Olveston Methodist Church.

HOUSE GROUP Tuesday 10th April at 6 Manor Close led by Rev. Sandy Williams

THE OLVESTON COMPUTER CLINIC Olveston Methodist Hall

Monday 2-4pm Wednesday 10-12 Friday 7-9pm

Ring 07833 354672 or 07957 433091 for further information.

CREAM TEAS Easter Bank Holiday Monday 2nd April 2.30-5.00pm

CONTACT: Rev Pete Brazier Tel 01454 418176,

e-mail pete@thebigfishcafe.co.uk

THE VINE House of Prayer

Pilning Street, Awkley BS35 4HL

Designated as a 'House of Prayer for all Nations' in August 2005 we continue to meet in a relaxed atmosphere seeking, with God's help, to find ways to influence the world in which we live through prayer and relevant actions. We meet, on Sundays at 10.30am and Mondays and Wednesdays at 7.30pm We also visit other Churches and events so please check our Notice Board or contact .

Mike and Barbara Matthews, tel. 07512 917229 or email:

thevine_awkley@hotmail.com

THE OASIS CHURCH, OLD DOWN

Apr 1	6.30pm	Mike Ogbourne
Apr 8	6.30pm	Tony Hall
Apr 15	6.30pm	Alan Mann
Apr 22	6.30pm	David Price
Apr 29	6.30pm	Peter Price

Each Thurs at 7.30pm Prayer & Praise Time

Contacts Jenny Parfitt jennyparfitt@ymail.com

Sue Tett stett56@hotmail.co.uk

AUST EVANGELICAL CHURCH Family Worship 11.00am

For more details contact Danny Bamfield 01454 419324.

e-mail danny@thebamfields.co.uk

LITTLETON EVANGELICAL CHURCH

Evening Worship every Sunday at 6pm for details tel. 413247

RC CHURCH OF CHRIST THE KING, Thornbury -

Sun 8.30am Mass 11.00 Family Mass

Monday-Friday Daily Mass at 10am

Tel 01454 412223 www.ctk-thornbury.org.uk

SOCIETY OF FRIENDS (QUAKERS), Thornbury

Meeting for Worship Sundays 10.30-11.30: The Hanover Room, The Chantry, Castle St. Wheelchair accessible. Children welcome with prior notice.

Local contact: Roger Howell rog3er2@gmail.com 01454 415035

National: www.quaker.org.uk Bristol area: www.bristolquakers.org.uk

Diary Dates for April 2018

The information given below is believed to be correct as we go to press.

1 st Sun			
2 nd Mon	Garden Open Rock House Elberton Cream Teas On Tockington Green Monday Movie	11.am-4pm 2.30--5.00pm 7.30pm	StM
3 rd Tue	Friends of Daldry Gardens Coffee morning Tea/Coffee & Bis. 50p Monthly Raffle British Legion WS Matthew Riddle	10.30-12.00 7.30pm	DGCL DGCL
4 th Wed	Beat Surgery Computer Clinic every week Holy Communion followed by Tea & Cake Table Tennis	10.30-11.15 10.00-12.00 2.30 7.00-8.30	OSt MH DGCL PH
5 th Thu	Thornbury Farmer's Market Coffee Shop Olveston Playgroup	9.00-1.30 10.00-12.00 9.30-11.30	OSt MH
6 th Fri	Haven Memory Café Thornbury Carers Support Group Computer Clinic every week	10.15-11.45 1.00-3.00 7.00-9.00pm	URC Chy MH
7 th Sat	Coffee Morning Litter Pick	10.30-12.00 1.00pm	MH PH
9 th Mon	Computer Clinic every week	2.00-4.00	MH
10 th Tue	Friends of Daldry Gardens Coffee morning Memory Café W.I. 'Art of the Magician' Tony Griffiths Aust Parish Council Meeting	10.30-12.00 10.15-11.45 7.30pm 7.30	DGCL TMH PH EVH
11 th Wed	Table Tennis	7.00-8.30	PH
12 th Thu	Coffee Shop Olveston Playgroup	9.00-12.00 9.30-11.30	OSt MH
14 th Sat	Coffee Morning Coffee Morning Organised Walk from White Hart	10.30-12.00 10.30-12.00 1.00pm	AVH MH
17 th Tue	Friends of Daldry Gardens Coffee morning	10.30-12.00	DGCL
18 th Wed	Table Tennis Jazz at the White Hart Olveston	7.00-8.30 8.30pm	PH
19 th Thu	Thornbury Farmer's Market Coffee Shop Olveston Playgroup	9.00-1.30 9.00-12.00 9.30-11.30	OSt MH

20 th Fri	Haven Memory Café	10.15-11.45	URC
21 st Sat	Coffee Morning	10.30-12.00	MH
	Parish Council Surgery	10.30-12.00	MH
	Auction of Promises (PTFA)	7.30pm	OS
24 th Tue	Friends of Daldry Gardens Coffee morning	10.30-12.00	DGCL
	Memory Café	10.15-11.45	TMH
	Olveston Parish Council	7.30	AP
25 th Wed	Table Tennis	7.00-8.30pm	PH
	Alv. History Somerset Food Riots	7.30pm	AMC
26 th Thu	Coffee Shop	9.00-12.00	OSt
	Olveston Playgroup	9.30-11,30	MH
28 th Sat	Coffee Morning	10.30-12.00	MH
	Quiz	7.30pm	StM
29 th Sun	Aust Quiz Night at Boar's Head	7.30pm	
30 th Mon			

Looking ahead to May

4-13th	Severn Vale Arts Trail		
--------	------------------------	--	--

KEY: **AC** Aust Church; **AH** – Armstrong Hall; **AMC** – Alv Meth. Ch.; **AMH**- Alv Meth. Hall; **AP** – Alexandra Pavilion; **AVH** – Aust Village Hall; ; **CH** – Cossham Hall; **Chy** – Chantry ;**CS** Castle Sch.**CTK** Christ the King **DGCL** – Daldry Gardens Community Lounge; **EVH** – Elberton Village Hall; **LVH** Littleton Village Hall **MH** – Olv.Meth.Hall;**OMC** Olv Meth Ch **OS** – Olv. School; **OSt** – Olv. Stores; **OSH** Old Sch. Hall Alm; **PH** – Olv Parish Hall; **StM** St Mary's Church, Olv.; **StMA** Almondsbury Church **StMTSt Mary's Thorn** **TCh** Tock Chapel; **TBCh** - Thornbury Baptist Church; **TMH** – Thorn. Methodist Hall; ; **WR** – Wesley Rooms. **URC** United Reform Ch Th

Contact details for any clubs or organisations in the Meeting Point area can be found in the Meeting Point Directory on the community website: www.olvestonandaust.com. If you would like to update your organisation's details, please email: meetingpointsecretary@olvestonandaust.com

Advertisements Neither Meeting Point, its editor, nor management committee accept any responsibility or give any guarantee in case of any dispute or claim as to quality, condition or delivery of commodities or services advertised in this magazine. It is not to be taken that publication implies recommendation. It is always advisable to check prices when ordering goods or services.

Views expressed by contributors are not necessarily those of the editor or Meeting Point magazine.

Copyright Meeting Point 2018. Copyright remains with the author(s) and Meeting Point. No part of this publication may be reproduced or transmitted in any form without the prior permission of the copyright owners.

Meeting Point is printed by Motion Printing LTD.