

Meeting Point



April 2022

TRUE BLUE TAXIS
(OLVESTON)

Local Taxi Company



Honest, Reliable and Safe

Cash or Card Payments



Mobile:

07967 042794

Top-to-Tail Housekeeping

- Professional
- Dependable
- Comprehensive service

**Trading
Standards
Accredited**

**Felina
Contract Cleaning**

01454 201562
07790 050187
cleaning@felina.biz
www.felina.biz



Weddings | Funerals | Bouquets | or just because...

**Beautiful
flowers for any
occasion...**

Our Shop is open Tuesday to
Saturday ~ 9.00am to 5.00pm

Taking walk in and phone orders

Delivering to BS35 and
surrounding areas ~ Tuesday to
Saturday from 9.00am to 5.00pm

Holding socially distanced
meetings for weddings and
memorials should you wish to
discuss plans

Please call for prices or pop into
the Shop in The Arcade,
Thornbury



t: 01454 416111

e: flowers@joliesfleurs.co.uk



THORNBURY
Chiropractic
CLINIC

www.thornburychiropractic.co.uk

The Georgian House, 6 The Plain

Chiropractic

Johnatan Williams MSc DC

Carol Williams MSc DC

Acupuncture

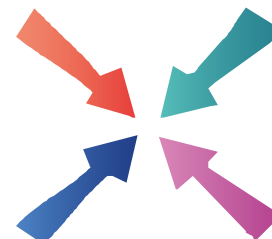
David Sanders Lic Ac. M.B. Ac.C

Massage

Josie Cole MTI

*Open weekdays 8.30am-7pm
and Saturday mornings*

01454 418259



Meeting Point

Volume 46, Number 7, April 2022

The community magazine for the villages of Olveston,
Tockington, Old Down, Lower Hazel, Awkley, Ingst, Aust, Elberton and Littleton upon Severn

EDITOR:

Marelin Orr-Ewing
Courtlands
Olveston
Bristol BS35 4DU
Tel: 01454 610081
[meetingpointeditor@
gmail.com](mailto:meetingpointeditor@gmail.com)

ASSISTANT EDITOR:

Angela Williams
Ashlea
Haw Lane
Olveston
Bristol BS35 4EG
Tel 01454 612850
[meetingpointmagazine@
gmail.com](mailto:meetingpointmagazine@gmail.com)

ADVERTISING:

Bernard Amos
Tel: 01454 620388
[meetingpointadvertising@
gmail.com](mailto:meetingpointadvertising@gmail.com)

Publication date
1st of each month

Material for May 2022
to the Editor or Deputy Editor
by April 4th 2022

From the Editor

It is always a pleasure to read the review of the most recent show put on by the Parish Players. Calamity Jane was clearly a great success, and the article is accompanied by some wonderful photographs.

Since the removal of the tolls to cross the Severn Bridge, Chepstow feels very near to us and so I have no reservations about including an item on the Chepstow Walking Festival. This could be a great opportunity for walkers on this side of the bridge to widen their horizons.

As this edition of Meeting Point goes off to the printers, the people of Ukraine are suffering in ways many of us cannot imagine. People across the UK are offering support in lots of different ways and, locally, there is a fund-raising concert at St. Mary's on April 1st in aid of the Red Cross Appeal for Ukraine. Details can be found within the magazine.

Marelin

The cover this month is by Peter Haworth

Meeting Point Founded in 1976 by the Anglican and Methodist churches in Olveston, near Bristol.

**Meeting Point magazine and Meeting Point Directory are online at the
Community Website: www.olvostonandaust.com**

Thornbury Motors

- New and Used car sales
- Servicing, repairs and MOTs on all makes



thornburymotors.co.uk 01454 412535



Grovesend Road
Thornbury
Bristol
BS35 2EF



SAVAGE ASSOCIATES

Accountants·Business Advisors
Corporate & Personal Tax Consultants

The Coach House, Aust Road
Olveston, Bristol BS35 4DE
Tel 01454 610388 Fax 01454 201541

for an initial consultation please contact:
edd.savage@savageassociates.co.uk

Vicarage Farm Holistic Therapy Centre

Bringing balance back
into your life.
Offering a wide range of
Holistic Treatments.



Hypnotherapy

A safe and effective treatment: to
remove stress, anxiety, depression
and phobias. Allowing positive and
powerful changes in your life.

Tel 01454 614390
www.vicaragefarm.org

Calamity Jane comes to Tockington

Barbie Davies

February 2022 saw the return of The Parish Players, with their production of Calamity Jane. From the moment the efficient front of house team welcomed the audience back into Olveston Parish Hall, not one calamity occurred, in yet another wonderful evening of much-needed escapism.

Under the inventive and highly experienced hands of director Linda Evans, the evening was bound to be a roaring success. Talented musical director Chloe Allsopp-Jones and her excellent band started the production at a whip-cracking pace and continued to support actors and atmosphere with their crisp and sensitive playing - with lovely 'Wild West' touches of banjo and percussion. No wonder the chorus's singing was so tuneful, lusty and youthful!

The Parish Players have always welcomed young folk, and every one of them contributed a great deal, whether it was their can can cartwheels and splits, their ability to sing in parts, or like Jake Woodward and Timothy Mitchell, who showed huge promise with their energetic and winning acting. However, the stalwarts of the company certainly shone too. John Jones, Phil Savage, Ray Hale and Mike Belsten hopped between parts and musical numbers with real panache and humour. Richard Newley is very busy off-stage, but also gave his all on-stage to create a very amusing and harassed Henry Miller, owner of the Golden Garter Saloon, Deadwood.



Katie Coyle as Calamity Jane

D. YOUNG
GARDEN SERVICES
Fully Qualified with over 16 years Experience
Grass Cutting Hedge Cutting Turfing Fencing
General Landscaping

Tel: 01454 416206 Mob: 07545 131488
Email: d.younggardenservices@hotmail.com

MD Aerials
Call Michael Dagger
T: 01454 418 341 M: 07817 304 236

Freeview – Freesat – Sky – DAB Aerials

Wall mounting LCD & Plasma
televisions setting up & tuning

Freeview

mike@mdaerials.co.uk
www.mdaerials.co.uk

T. EDWARDS PLANT
Digger and Driver Hire

- Site/garden clearance
- Footings
- Drainage/soakaways
- Driveway preparation
- Stump removal
- Fencing & turfing
- Narrow access equipment

Price or day work t: 07900 372349
t.edwardsplant@gmail.com
CPCS/CITB qualified & insured

Divine
Bathrooms & Wet Rooms

07584 666154

Email: info@divinebathrooms.co.uk
Web: divinebathrooms.co.uk

iphe
Registered Plumber

S.J FARR
KITCHEN FITTING
SERVICES

Mobile: 07915673649

Our Associated Services Include:

- Plumbing
- Wall & Floor Tiling
- Decorating
- Plastering

City & Guilds Qualified

Geoff Gulliver
Carpentry & Joinery, Littleton
ALSO
UPVC Doors, Windows and
Conservatories. For a very
competitive **FREE** estimate

Ring (01454) 414947

Most of the action took place at that saloon, but Andy Black and his excellent team had returned after a nearly two-year break to fulfil a set design that allowed the action to gallop from Chicago to Fort Scully and, of course, the Black Hills. Sound effects (Mike Chappel) and lighting (Richard Churchill) added humour, sparkle and focus to the whole atmosphere. One particularly memorable moment was the lanterned procession of the entire cast singing The Black Hills of Dakota. There was such joy in being able to perform good things again, and it really touched the audience's hearts.



So, too, did the lovely rendition by Wild Bill Hickock (Paul Dimery, pictured left) of Higher than a Hawk. He certainly looked the part (as did all the cast, who were so well costumed by Cath Chappel) and his laid-back, yet clear, delivery made a good foil for his secret love, Calamity (Kate Coyle) who was quite simply superb. Her energy and punch were infectious, and her singing a positive treat, with diction as clear as a bell, and that hint of vulnerability, which won the audience.

Francis Fryer (David Proud) also won much laughter with his perky and genuinely gleeful portrayal of a run-down music hall act. No wonder local Deadwood lass

Susan (Cath Purchase) purred beautifully under his charm!

Lt Danny Gilmartin (Paul Harrod) and Katie Brown (Amy Sunderland) played excellent contrasts to the wild lot of Deadwood. They provided yet two more lovely voices to the musical feast. And, just to give a touch of Chicago sophistication, Lesley Clarke created a glamorous Adelaide Adams. All the dancing and movement was as ingenious as ever, after nineteen years under the past master of small space/big impact Jill Harris, and her assistants.

This production certainly wasn't a Deadwood Stage. It shone with joie de vivre, showing, with all the calamities surrounding us, how vital it is to celebrate the positive, in coming together to share friendships, talents and productive hard work. So, thank you Linda and The Parish Players for not only restoring some sense of normality, but also for restoring our faith in the best and important things in life.

(More photos over the page...)

Our newly extended stylish Thornbury Showroom now offers a Cash & Carry service

We have lots of carpet and vinyl remnants – are you looking for quality flooring at greatly reduced prices?
Why not pop along and see what we have in stock.

We offer FREE home visits, measures and quotes



**LAMINATE | CARPETS | VINYL | ARTIFICIAL GRASS
READY TO TAKE AWAY ON THE DAY**

**Phoenix Flooring
Limited** 

Unit 15 Hemingway Business Centre, Walker Way,
Thornbury Bristol BS35 3US
Opening Hours: Mon to Sat 9am – 5pm

**DISABLED
ACCESS**

Also at: 5 Chelford Grove, Stoke Lodge, Bristol BS34 6DD
Opening Hours: Mon to Fri 9am – 5pm | Sat 9am – 1pm



You can find out more about The Parish Players by visiting
www.facebook.com/OlvestonParishPlayers.



2 Men Went To Mow

All Aspects of Garden Maintenance, Plants & Shrubs Supplied, Garden Rubbish Removal, Fully Insured

Garden and Tree Service Tel: 07956 311901
Local, Friendly and Reliable Email kev@2menwenttomow.co.uk

Tree Surgery (NPTC Qualified)
All Types of Tree Work Undertaken
Contract Grass Cutting
Beds & Borders Maintained
Pruning and Hedge Cutting
Planting

FREE ESTIMATES!

L. & J. GULWELL

Independent Family Funeral Directors

1 Quaker Lane • Thornbury

Tel: (01454) 418779

24hr Service

email: info@funerals.uk.net www.funerals.uk.net

Private Chapels of Rest

COMPANION AND DRIVING SERVICE

Driving Miss Daisy®
We're There For You

Now taking bookings in your area!

- For people of all ages unable to drive but wish to remain independent
- Supported trips to the doctor, hospital, shops, bank, hairdresser, vet, etc.
- Social outings, holidays, help at home and much, much more
- DBS checked and First-Aid trained
- Dementia friendly
- Wheelchair Accessible Vehicle
- Fully Licensed

To book your Daisy
07951 079 558 / 0333 014 6211
northbristol@drivingmissdaisy.co.uk
www.drivingmissdaisy.co.uk

Top quality Nursing and Residential Care

Beech House

Beech House Care Home provides excellence in all aspects of care for all our residents, offering the best in nursing care for the elderly and residential care for people with a diagnosis of dementia.

Our unique care service includes:

- beautiful gardens
- purpose built homes with 24/7 air circulation
- spacious rooms and wide corridors
- top quality chefs
- television with DVD and telephone in each room
- wheelchair provision at no additional cost
- high technology baths and walk-in showers
- regular minibus trips
- programme of interesting and stimulating activities

RECENTLY RATED Outstanding by Care Quality Commission

To arrange a visit, telephone **01454 412266**
For more information see www.bristolcarehomes.co.uk

Bristol Care Homes
providing a unique care service

Old Down Cricket Club

Tony Gardner

150 Club Winners March 2022:

£50 Tony Williams
£15 Simon Gould
£5 Bill Finch

Latest £25 Bonus Ball Winners:

19/02/22 Harry Kitchen
26/02/22 Andy Rowen
05/03/22 Paddy Gardner

Up the Down!



GreenForce

Did you know.....that our oceans, our climate and our human welfare are dependent on sea grass which exists to support marine life?

The largest expanse of sea grass grows in the Indian Ocean, but it will grow anywhere if it can. However, it has diminished worldwide from coastal waters by 50% in the last 100 years. The grass extracts carbon from the atmosphere at a faster rate than tropical rain forests. Governments must be alert to this great ability. The coast of UK has lost 90% of its grass. The grass also helps in stopping coastal erosion.

Sea grass resembles the grass we're familiar with on land, as it is bright green and bears masses of seeds. It is remarkable in that it is the only flowering plant that flowers under water. The grass can be found along the Pembrokeshire coast, where Swansea University is encouraging its growth and carrying out research. The grass seeds are collected and put into hessian bags which are then planted around the coast in new areas. This is proving to be a successful method of propagation. The sea grass acts as a nursery environment for a wide selection of marine life including young fish which then grow to replenish our marine fish stocks.

Have you thought oftaking a stroll through Olveston churchyard this spring, where you will see primroses and cowslips flowering and attracting bees? **Also**try to buy peat free compost, as it is vital to retain all peat in the ground as it absorbs so much carbon from the atmosphere.

www.olvestonpreschool.co.uk/pilning-site

Pilning Pre-School

NOW OPEN!

Offering amazing childcare to children aged 2-5 at the heart of our local community.

Pilning Village Hall
Open 9:00am - 3:00pm
Tel: 01454612074

Find us on Facebook

Friends of St. Mary's

The prize winners in the March draw, held on 3rd March 2022 were:

Amount	Number	Name
£150	487	Mrs C Phillpott, Tockington
£75	565	Mr R Lloyd, Tockington
£25	294	Mr J Mason, Tockington
£25	367	Mrs J Bendall, Almondsbury
£25	635	Mr R Loadman, Olveston
£25	572	Mr P Haworth, Olveston
£20	178	Mr B Morgan, Tockington
£20	562	Dr E Saunders, Olveston
£20	188	Mr R Riggs, Almondsbury
£20	171	Mrs C Healey, Olveston
£10	229	Miss J Davies, Olveston
£10	275	Mrs L Evans, Alveston

If you are not yet a member and wish to join the lottery, please telephone Andy Phillips on 01454 614890 or email: andisp28@hotmail.co.uk.

Don't forget, if you're not in, you can't win!

gl LAW

Legal advice that brings balance to life

Award winning legal advice to help you navigate change and plan for the future.

Let's talk about you or your business www.gl.law 0117 906 9400

BUSINESS SERVICES · PROPERTY · DISPUTES · FAMILY LAW · WILLS & PROBATE

 **PawsPetCare**
...simply for the love of animals

Providing care for your pets
when you need it

Contact Helen for a friendly and reliable service
07493 153520 or enquiries@pawspetcare.com
www.pawspetcare.com

Frontline Martial Arts

Traditional Martial Arts / Taekwondo

Mighty Mites (under 10's): Fridays 4.30-5.15pm at
Juniors (ages 10-13): Mondays 7.15-8.15pm
Adults/over 13's: Mondays 8.15-9.45pm
at Alveston Youth Centre



Tel: 07771 692222
www.frontline-ma.co.uk

THE WHITE HART INN Olveston



Traditional 17th Century English Pub

Catering for Parties and Functions
Wide variety of cask & keg beers
Skittle alley & pool table available
Book now for Skittle Matches
Award winning courtyard garden

Telephone: 01454 612175

SEVERN SIDE TAXIS

SIX SEAT COMFORT
AIR CONDITIONED CAR



AIRPORTS
BUS STATIONS

HOSPITALS
EVENINGS OUT

RING STEVE WARD
07879 601011

FRANCIS DESIGN & BUILD Carpentry & Building Services

For all aspects of carpentry

Doors, Skirting, Kitchens, Fencing,
Decking, Stairs, Timber frame etc.

Call Craig on 07970 514409
(or, if busy)

email: craigyoung0308@live.co.uk

A Celebration of Local Artists



As the visual side of Thornbury Arts Festival, the Severn Vale Art Trail was established in 2006 to promote the work of local artists and make art accessible to all. This year the art trail takes place from

Thursday 28th April to Monday 2nd May.

In 2022 the art trail showcases 63 artists in 28 venues over 5 days. Annually, artists and craftspeople exhibit their work in their homes, studios, community halls and churches. All work exhibited is original and made here in the Severn Vale. There is a huge variety of contemporary and traditional art that shows a diverse range of mediums from drawing and painting, ceramics, sculpture and stained glass as well as jewellery and textiles. It provides an opportunity to meet the artists, to talk about their work and processes, also to view and purchase original artwork.

This is a free community event open to people of all ages, so save the dates to wander around and enjoy the Severn Vale Art Trail. For more details about artists and venues please check our website: www.severnvalerarttrail.org

Quiz Results!

The 2022 Fish and Quiz which was held on Friday 4th March was voted a resounding success by all those who took part. It was good to welcome back our regulars and welcome new participants. The winning team was The Next Generation. Our nominated charity for the evening was the Red Cross Ukraine Appeal for which we raised £300.

The 2023 Quiz will be held on Friday 24th February.

Sew Almondsbury

It is really good when an article in Meeting Point generates interest from readers. This was the case with Sew Almondsbury, which featured in the March magazine. A reader saw their request for unwanted materials to help with their charitable projects but pointed out that there were no contact details. Not sure how we missed those! If anybody wants to find out more about this group, or ways in which you can help, here are the contact details:

sewalmondsbury@gmail.com or 07511807586

Severnside Heating & Plumbing



- Installations
- Servicing
- Repairs

Working locally since 2003. An experienced heating and plumbing engineer. For a no obligation quote please call Mike
Mob: 07554 825813 Tel: 01454 613780



Sockets, Lights, Security Lighting, Landlords Reports, Inspection & Testing, Consumer Units, Electric Heating, Rewires, New Builds, Garden Electrics, Car Charging Points, Solar PV, and More..

Your Local Electrician Richard Corney



01454 633 336
laelectrical.com

Baby and Toddler Music!



Have fun and enjoy music with your child
Meet others and share music as well as a cuppa and maybe cake
Suitable for ages from 0-4 with a supporting adult of any age

10:30am Wednesdays in Severn Beach Village Hall

£2-5 for an hour session dependent on numbers

FFI Contact Janet Harrison janet_harrison@outlook.com or 07562 212435 or turn up to a session



**"The Friendly pub
where you arrive as
our Guest and leave
as our Friend"**

BOARS HEAD AUST

01454 632278

- Your local friendly Village pub
- Open 7 days a week
- Food Served from 12.00pm to 9pm every day
- 1st Friday of the month is Quiz Night
- Breakfast Available
- Chefs Table Food Experience
- Parties Catered for
- Open Log Fires
- Real Ales and Premium drinks available
- 5 star Food Hygiene rating

MAIN ROAD, AUST, BS35 4AX

Alveston Gardens Association



My Way with Fuschias presented by Peter Holloway

Monday 4th April 7.30pm

Alveston Jubilee Hall All welcome – Visitors £3

Olveston and Tockington WI

Angela Green

This month WI members are going to be trying out a new craft called wet felting. It may be new to us, but it is an ancient craft where wool is used to make wearable items like hats or to create pictures. We shall have a demonstration first and then, those of us who wish to, have a go at making our own item. It will be fun to see what everybody goes home with!

We meet in the Parish Hall at 7.30 pm on Tuesday 12th April. If you would like to join us, you will be very welcome; ring me on 615222 for more details.

Thornbury Art Club

Have Landscape Artist of the Year or Watercolour Challenge been must-watch programmes for you lately? Thornbury Art Club hosts monthly live talks or demonstrations by established, and often well-known, artists who use a variety of media and techniques. These are held on the fourth Tuesday of the month at St. Mary's Church Hall starting at 7.30pm. Non-members are welcome to attend for a £5.00 entry fee.

We have been running since 1965 and hold a very successful Annual Exhibition and, as well as our monthly club night, we meet in studio groups to work on our own paintings. We hope to soon resume our popular coach trips to London to visit galleries and museums.

If you are an artist and would welcome the opportunity to exhibit your work, would like to take up or return to painting or drawing, or are simply interested in art, Thornbury Art Club would welcome you as a member.

For further details on what we have to offer please contact our chairman, Mary Drown 01454 414433 or mary.drown@blueyonder.co.uk or our membership secretary, Pat Williams 01454 260202 or pwilliams.charfield@outlook.com. or visit the website: www.thornburyartclub.org.uk

motion
motiondesignsprint

Do you know we print the Meeting Point Magazine?

We also print for lots of local clubs, events and businesses.

Based in Severn Beach we offer convenient off-road parking right outside our door!

We print everything from Wedding Stationery to Business Stationery

Our professional design and modern printing techniques have saved time and money for lots of people.

Fast, efficient and professional.

Why not let us print for you?

01454 631289
info@motionprinting.co.uk
www.motionprinting.co.uk

ALMONDSBURY PHYSIOTHERAPY AND SPORTS INJURY CLINIC

Louise Brinson
Chartered Physiotherapist, hpc reg

Almondsbury Surgery, Sundays Hill
Almondsbury, BS32 4DS

Tel: 07786915442
Fax: 014540615745
E-mail: physiolouise@hotmail.co.uk

Also at Aztec Spa Leisure Club

ACE1
Window & Gutter Cleaning

Window Cleaning
Gutter Cleaning & Repair
Fascia & Soffit Cleaning
Conservatory Roof
Solar Panel Cleaning
Power Washing

M: 07590 201264
T: 01454 436162

 Gleaming Insurance

Olveston and Tockington

Parish Hall
07780 515317

A great venue for :

- Fitness
- Parties
- Public events
- Music & Dance

Check availability & book online at www.olvostonparishhall.co.uk

"Our newly decorated Hall"





Aust Parish Council

Councillor Vacancy

A casual vacancy has recently arisen on the Parish Council, due to the resignation of Andrew Learmonth. Andrew, a resident of Aust, has held the position for over a decade. The Parish Council would like to publicly thank him for these years of service to the community.

The vacancy has been advertised on the parish noticeboards and the council expects to be free to co-opt a new member (subject to no election being called) from late March. Any residents who would be interested in filling the vacant seat should contact the Clerk for more details. You would also be welcome to speak to any of the current councillors for a real-life view of what it is like to be a parish councillor. It is a rewarding role, requiring a keen interest in community affairs and a commitment to attend council meetings (usually held on the first Tuesday evening of each month except August and December.) The council would be particularly interested in received applications from residents of Aust, to maintain the geographical spread of councillors across the parish, but residents of the other parts of the parish would also be welcome to apply if they so wish.

Jubilee celebrations

Plans are being developed for a parish-wide event to celebrate the Queen's Platinum Jubilee. The plan is to hold a family-friendly event at the Boars Head, Aust on Sunday 5th June. We are very grateful to the small team of volunteers who have come forward to start shaping the plans – though appeals for more helpers, both in the run up to the event and on the day, will be coming soon!

Unfortunately we have still not heard whether our grant application to the South Gloucestershire Council Jubilee Fund has been successful. Once the funding is known, we will be able to further develop the plans which I hope to be able to share with you next month.

Please get in touch with me if you are able to offer any help to the organisers.

We will also be planting two commemorative oak trees, gifted to the Parish Council by the Honourable Company of Gloucestershire. By the time you read this, the tree in Elberton should have been planted by three generations of the Meredith family. It is hoped that the remaining tree will be planted adjacent to the new sea wall path at Aust. The locations of the trees will be recorded as part of the national Queen's Green Canopy programme.

Emma Pattullo, Clerk: (01454) 837271 or austparishcouncil@gmail.com

Bristol Carriage Masters

- Religious or non-religious funerals
- Bespoke funerals for burial or cremation
- Fully guaranteed pre-paid funeral plans
- Direct cremations



177 Crow Lane, Henbury, Bristol, BS10 7DR
Telephone: 0117 950 8066
Website: www.bcm-funerals.co.uk
Email: admin@bcm-funerals.co.uk

Windmillcare Homes

— great places to Live



Windmill House

The original, elegant home in a delightful rural setting with 2 acres of beautiful gardens delivering unrivalled care

01454 413818



OSBOURNE COURT

Our brand new purpose-built home providing exceptional specialist dementia care in the heart of the village of Stoke Gifford

0117 944 8700

Residential, Short-term Respite and Day Care available

enquiries@windmillcare.com

or www.windmillcare.com

'Indawes - Outdawes'

Decorating and Home Improvements

Painting | Wall Papering
Floor Laying

Martin Dawes 07720 509653
martin.dawes@live.com

Your advert could be here and reaching 1,500 households

Contact Bernard
meetingpointadvertising@gmail.com

Chepstow Walking Festival



The Lower Wye Valley and its borders with Wales and England are beautiful at any time of the year, but particularly so in Spring, and there is no better introduction to the area than to join the many guided walks led by knowledgeable local experts during the popular Chepstow Walking Festival.

The jam-packed programme has a range of walks to suit most, with hidden histories, stunning viewpoints, wildlife and some with a surprising twist like finishing a walk over the Newport Transporter Bridge or seeing the old Aust Ferry being gradually brought back to its former glory. You can brush up your map reading skills and listen to a talk on the Nature of the Brecon Beacons.



It's the 10th anniversary of the launch of the Wales Coast Path. Chepstow also has an anniversary as it celebrates its 10th year as an accredited 'Walkers are Welcome' town, which works to offer the best walking experience for visitors and locals alike.

So, come and join us. Tickets are £5 (with some exceptions). For full programme and booking details please visit: www.walksinchestow.co.uk



Tel: 01454 885766
Mob: 07724 166917

Ridge Roofing and Property Maintenance

Roofing ❖ Chimney Repairs ❖ Lead Work
Guttering ❖ External Painting
General Maintenance ❖ **FREE Estimates**

D-CR DOMESTIC APPLIANCES

Fast, friendly and efficient service
Sales - Service - Repair

Tel: 01454 850522 - Mobile: 07917441539
Email: d-cr@live.co.uk - Web: www.d-crdomesticappliances.co.uk



DOMESTIC APPLIANCE REPAIR SPECIALIST

- WASHING MACHINE
- TUMBLE DRYER
- DISHWASHER
- FRIDGE FREEZER
- COOKER
- HOB OR HOOD

Proud member of: 

EARTHWORKSUK

We offer a range of recycled and quarried products including 6F5, type 1, topsoil and decorative stone. These can be delivered straight to you on site or collected from us at our yard in Grombail. Check out all we can offer you on our website or contact us using the details below.

Skip Hire

Top Soil

Recycled Aggregates

Grab Lorry Hire

Tipper Hire

info@earthworksuk.co.uk www.earthworksuk.co.uk
Orders Line: 07782472727
Bristol: 01179 828265 - South Glos: 01454 501037




Lending with Heart and Mind

South Gloucestershire Council fund
a not-for-profit loan scheme for homeowners
and landlords*.

We understand the expense of maintaining
your home and we work with you to take the
stress out of funding repairs, improvements or
adaptations.

We see you as an individual, not a credit score.
Our knowledgeable team of advisers will guide
you through the process of applying for a home
improvement loan.

For a no-obligation assessment
or more information visit
www.lendology.org.uk or call 01823 461099

Heatherton Park Studios, Bradford on Tone, Taunton, TA4 1EU

*subject to eligibility



Oveston Parish Council

Pat Savage

Annual Parish Assembly

This is scheduled to take place at the Parish Hall on Tuesday May 3rd 7.00 for 7.30. This is an opportunity for the Parishioners to put their ideas to the Council covering events both over the past two years and its future plans. In the past some groups within the Parish have made presentations outlining their activities and involvement in the Community. Should you wish to make a presentation please contact: clerk@Ovestonparishcouncil.gov which will give him an indication of numbers involved.

Pavement Parking

This has become a national problem with vehicles getting larger and paths becoming narrower. Whilst it is appreciated that owners wish to protect their vehicles from damage caused by passing vehicles, we do need to give consideration to all footpath users particularly pushchairs, wheelchairs and those of us who do have difficulty negotiating the pavements. May we ask that we all exercise consideration when parking our vehicles on the roadside.

A Pudding fit for a Queen

A National competition was launched at the start of the year to invent a pudding which will form part of the Platinum Celebrations. Whilst entry to the nationwide competition has now closed, as part of our local celebrations we are inviting entries which will be judged by members of our local WI. Should you wish to take part please contact: patsavage@olvestonparishcouncil.gov

Dog Fouling

Sadly, this has now become a problem in all our open spaces and play areas. No doubt we are all aware of the etiquette which all responsible dog walkers should adhere to. There are two bin receptacles within the Parish although it is expected that owners will clean up after their dogs and transport the dog waste to home. If you are concerned about this issue then please contact: dogwarden@southglosCouncil.gov

Parish SpeedWatch

Would any parishioners interested in joining those who have already volunteered for the Parish Speedwatch initiative, please contact Lyndsey Gethin: Lyndsey.gethin@olvestonparishcouncil.gov.uk. The Parish Council is looking to recommence Speedwatch training and active roadside sessions to help raise awareness of speed on our increasingly busy roads. Any additional help and support would be welcome.

LINELA

embroid | print | promote

One place for everything promotional.
Specialising in embroidery,
printing and branded gifts



T Shirt Printing
Sports wear
Work wear
School wear
Promotional Products

Call us: 01454 615300

Email us: sales@linela.co.uk

www.linela.co.uk



Livewire Electrical
Electrical & Mechanical Solutions



Domestic, Commercial
and Industrial Installations

All electrics for new build, extensions and alterations to satisfy mandatory Building Regulations. Landlords safety inspections
Portable Appliance Testing (PAT)
Electrical and electronic service and repair
For 24 hour call-out service available please call Peter Jones: Tel: 07880 858785
Email: pete.livewire@blueyonder.co.uk
Local number Tel: 01454 613482
Visit our web site at
livewire-electrics.co.uk

BonneFreshClean
Carpet & Upholstery Cleaning Specialists

Love the look and smell of
clean and fresh carpets and
upholstery?

Bonne Fresh Clean brings to
you a professional carpet and
upholstery service that will
leave them sparkling and fresh.

Call for a free
no obligation
quote today!

- Thorough, gentle deep cleaning, no residues
- Child and pet friendly treatments
- Latest industry approved qualification and full insurance



Bonne Fresh - Relax and enjoy beautifully clean
and fresh carpets and upholstery!

T: 01454 436001 M: 07774 908410

W: www.bonnefreshclean.co.uk

44 Townsend Lane, Almondsbury, Bristol, BS32 4EQ

Local Man With a Van



**I'm available for small
moving jobs,
rubbish collections
and house clearances.**

Call Nigel
01454 529 003

Passerines or Perching Birds

Paul Godwin

Passerines are of the bird order Passeriformes which, from the Latin, means Passer (Sparrow) and Formis (shaped) and it applies to half of the world's bird species. The common reference to them is 'Perching Birds' and includes many of the birds we are most familiar with in our gardens and countryside. Whilst too many to list, these would include chaffinches, goldfinches, sparrows, dunnocks, blue tits, great tits, robins, blackbirds, starlings and jackdaws. Whilst they may differ significantly in size, behaviours and habitat what they all have in common is that their feet allow them to perch on trees, bushes and wires as well as stand upright on the ground. All have feet which have three forward pointing toes and one back. Something else common to all is that they have a repertoire of calls which we often hear, which could be to raise alarm or seek a mate. If they are migratory birds they would also be using these calls to communicate whilst travelling and also whilst they feed. They do however have differences, such as the food they eat. Some such as sparrows and finches have predominantly a seed-based diet. Whilst others such as warblers eat mainly insects and invertebrates. Others such as crows are scavengers and have predatory habits.

There are some notable birds which we may frequently see, such as wood pigeons, collared doves and greater spotted woodpeckers, which may appear very close to the definition of passerine but are not. They are classified as non-passerine, which may be due to the formation of their feet or perhaps, as with the woodpecker, having a limited range of song. The birds below are a selection of passerines I have photographed locally. Some have been seen frequently, others not so!



The Tree Creeper

This is a small woodland bird which can easily be overlooked. It is most frequently seen climbing and spiralling up the trunks of trees as it feeds. Once finished on one tree it flies across to the bottom of the next tree and starts over again. When I have spotted tree creepers it has always been when they are flying

between trees as they are quite difficult to spot on the bark. They feed on insects and spiders with a fine and sharp bill. They usually nest behind the

Beauty at the Barn

4, Grey Gables, Vicarage Lane, Olveston
For appointments telephone Nicola on
01454 201717



Jessica Manicures
GELeration Nails
Shellac Nails
Jessica Pedicures
Spray Tanning
Waxing
Ear Piercing
Eyelash Perming
Eyebrow Shaping
Eyelash tinting
And more....
Evening appointments available
Gift vouchers available



Olveston & Tockington Tennis Club

*"Your local tennis club, next to Olveston Parish
hall"*

**Make 2022 the year to get back
on court.**

Coaching for all ages.

**Fabulous clubhouse with changing
facilities, kitchen, TV and table tennis.**

Call Martin 07720509653

Everyone welcome



Tel: 07887 652358
Jed's N.E.A.T. Services
(Nose Everything About Technology)



Technology brings us together and makes life easier. But.....

What should you buy?

How does it work?

And what if anything goes wrong?

Phones / laptops / tablets / TV's / Smart home systems. I can.....

- Help you choose what's right for you
 - Teach you how it works
 - Fix existing 'tech' problems

HOME VISITS – VIRTUAL REMOTE ASSISTANCE – PERSONAL SHOPPING

PRICING POLICY – Please pay me what you think is fair – SIMPLE ☺

ABOUT ME

Jed Williams – I'm 16 years old, live locally & have had my own business for over 3 years
Email: me@jedwilliams.co.uk Website: myneat.co.uk Tel: 07887 652358

bark of a tree. Tree creepers are resident in the UK and there are approximately 180,000 nesting pairs. My tree creeper photograph was taken February 2022 in woodland close to Elberton.

The Nuthatch

The nuthatch in general does the opposite to the tree creeper, as when feeding on a tree it is usually facing down towards the ground. It is the only species to feed and climb trees in a downward motion, so this is a key factor in its identification. It is found in deciduous and mixed woodland with mature trees. It nests in tree holes which can be seen with mud around them which the nuthatch uses to minimise the size of the hole. It feeds on insects and acorns, which it opens by wedging them into crevices and hammering them open with its chisel like beak. It is resident in the UK, although less frequently seen in Scotland and Ireland, with about 220,000 nesting pairs. This photograph was taken February 2022 in woodland close to Elberton.



The Robin

Probably one of our most identifiable birds, frequently seen in our gardens and allotments often seeming almost tame. It is also frequently seen in countryside and woodland but is less tame in that environment. The main reason they come close to us in gardens is because we are a rather good source of food for them, especially when we are gardening, uncovering insects and invertebrates, or throwing out the crumbs from the back door. Whilst there are approximately 6 million resident nesting pairs in the UK, numbers in winter are boosted by those who migrate in autumn and some of those will remain with us for winter. If you see a robin in your garden, they will be nesting very close by. They are highly territorial and many of us will have seen a robin in our garden protecting its territory. It is possible that in autumn your 'resident' robin is having to defend its territory from a migrating robin moving south for winter. The robin in the photograph was very pleased to pose for the photograph and I promised I would try and get it into Meeting Point if it posed nicely. It was almost on the end of the lens! This photograph was taken January 2022 near Tockington.

Part 2 of this article follows next month.



Delivering the highest standards of homecare in South Gloucestershire for 14 years

Premier Homecare is the leading homecare provider in North Bristol and South Gloucestershire, having cared for over 2,000 families, ensuring they are safe, healthy and looked after

- Short and long term home help
- Flexible hours
- Bespoke care support
- Highly trained and reliable carers
- Personal Care
- From cleaning to 24 hour Live-In care

Call today for help with a loved one

PREMIER HOME CARE

0117 959 2013
www.premier-homecare.com

Inspected and rated
Outstanding ☆
Care Quality Commission

good care guide
★★★★★

Great British Care Awards
2016 WINNER



Catering for any occasion
Private parties, Birthday and Anniversary Celebrations,
Weddings, Funerals, Corporate Events,
Formal Dinners, Shoot Lunches... whatever the occasion

www.el-cuisine.co.uk Please contact Emma 07931952939 info @el-cuisine.co.uk



Tockington Manor School and Nursery
for boys & girls aged 2 - 13

Discover our

- Family approach to education
- Envious Senior School entry
- Year 7 & 8 Pathway Programme
- Wrap-around care
- Small friendly classes
- Excellent facilities

Book your private tour at a time convenient to you
01454 613229

News from St. Mary's

Debbie Harries



Concert

In aid of the International Red Cross Appeal for Ukraine. On April 1st at 7.30pm, St Mary's, we are delighted to welcome Kate Radmilovic (mezzo soprano) with accompanist and flautist Nicki Barnes for an evening of beautiful music. Donations on the door. Bar available. We do hope you will be able come and support this important cause.

Plant and Produce Sale

Sunday April 3rd St Mary's at 10.30am
Come and get your plants ready for summer planting..... and maybe a cake, pot of jam or chutney.

Easter Services at St Mary's Maundy Thursday April 14th

Agape Supper 7.30pm

This takes the form of a Passover meal with Holy Communion. Please let Debbie know if you would like to attend oboe-debbie@live.co.uk

Good Friday April 15th

The Final Hour 2pm with St Mary's Choir

Easter Day

Holy Communion 9.30am

We look forward to celebrating Easter with you!



Old Herbaceous

"It's Downton Abbey with gardening tips" The Guardian

Sown with seeds of gardening wisdom, this charming one-man show is a love story – a humorous portrayal of a single-minded yet gentle man with a passion for plants.

Saturday April 2nd Methodist Hall, High Street, Thornbury. Seating will be pre-allocated to ensure Covid safety precautions are taken. Tickets are £12 and are available from:

AAGThornbury@gmail.com or 01454 850933.

Natalie Gladstone BSc(Hons) Ost

OSTEOPATH

Back & neck pain, arthritic / joint pain,
sports injuries, pre / post natal, whiplash,
cranial treatments, rehabilitation Pilates.

Tel: 07870 219 249

www.nataliegladstoneosteopath.co.uk

OLD DOWN HILL, TOCKINGTON

Easy parking. Day & evening appointments.
REGISTERED: EXPERIENCED: PROFESSIONAL



Digger and Driver Available
Out-Door Services

A. D. D. PLANT

Groundwork, Digging & Clearing
Turfing, Any outdoor work

Tel: 01454 417372

Mobile: 07866 407683



keeping your garden
beautiful...

ask us about
LAZYLAWN

- LazyLawn - superior artificial grass supply and installation - licensee for Bristol & South Wales
- landscape design and build with 25 years experience
- tree surgery
- garden makeovers
- regular garden maintenance

**Garretts Gardens
and Landscapes**

for Garretts Gardens or Landscapes
t 01454 614111 m 07974 109919
info@garrettslandscapes.co.uk
www.garrettsgardens.co.uk

Come rain or shine,
lisa costa estate
agents have the
experience and
knowledge to take
you smoothly through
the moving process.



lisa costa

RESIDENTIAL SALES & LETTINGS

53 High Street | Thornbury | BS35 2AR
01454 279734 | sales@lisacosta.co.uk | lisacosta.co.uk

Please note: If your property is currently on the market, the terms and conditions of your Existing agency agreement must be considered before instructing ourselves.

Sheelagh Foley

Pat Thirkettle

Sheelagh was born an only child in Bristol but with Rory, a Kerry Blue terrier, for company; but more on that later. After school she enrolled as a nurse at Hammersmith Hospital. In 1963 radiotherapy for cancer patients was in its infancy, with treatments such as inserting radioactive gold beads in a patient's head. She didn't finish her training for several reasons, including suffering from severe pneumonia caused when specialising a patient who had had a kidney transplant, and working with very basic immune suppression techniques; however, she says that time was invaluable experience.

While on sick leave she applied to an advert by English Leo Marconi for computer programmers, only to be surprised when arriving for interview that they were not expecting a woman! She failed the QuizQuid test they gave her and was told she would never make a programmer. Having studied biology and mathematics at A-level, she applied to BP as a geophysical computer working on seismic oil exploration in the North Sea and Libya after leaving nursing. Determined not to give up becoming a computer programmer, she wrote to BAC on 'spec' and after interview, started as a trainee computer programmer. The training took place at the old Rolls Royce College, now Filton College, and was given by IBM tutors who came to teach them on the IBM360, a mainframe computer that led the field in the 1960s.

Sheelagh then spelt a boring year at CEBG and, fancying more sunshine and less tax, she applied to Rand Mines in South Africa. She was paid for the ten-day journey on Castle Shipping Lines, sharing a cabin with three girl physios. Their early morning arrival at Cape Town took her breath away with its stunning beauty. Her onward journey to Johannesburg was less thrilling and the violent society there even more so, and so she immediately applied to Mobile Oil for a job in Cape Town. The year spent there was one of the best in her life; however, her mother became ill so she and her partner Brian came home. In those days you could not fly direct from Cape Town to Heathrow, so they hopped home via Rhodesia, Malawi, Kenya, Greece, Italy, Switzerland and France.

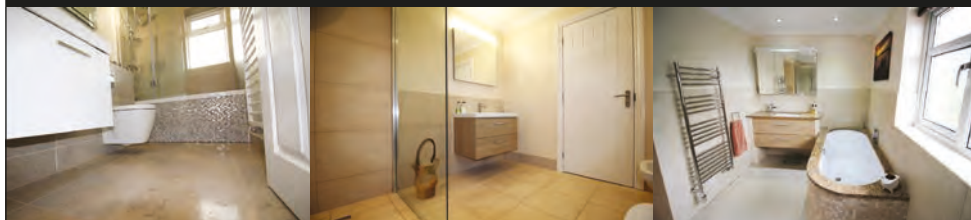
The next five years were spent caring first for her mother and then her father, as well as working at Rolls Royce. Without a degree, but much experience, she was made Programme Manager, the first woman in Bristol to hold a management position. The project she led was called IBIS, which would take a request for an engine, break it down to the raw materials needed, order them and build them back up to make the engine. This took a team of fourteen programmers two years to complete.

Her final job as a programmer was with J Henry Schroder Wagg, merchant bankers, with a higher salary and benefits. She was Account Manager for ReMark, a reinsurance company based in Amsterdam, so she and Brian

Paul Whittaker

BATHROOMS & WETROOMS

DESIGN . SUPPLY . INSTALLATION



Tel: 07879 666221 . Website: www.paulwhittakerbathrooms.co.uk

Dunkley's
Chartered Accountants
30 YEAR ANNIVERSARY

**LESS THAN 6 MONTHS TO
GO...MTD IS COMING
FOR ALL VAT REGISTERED
BUSINESSES!**

TALK TO US ABOUT HOW WE CAN HELP YOUR
BUSINESS PREPARE AHEAD OF 1 APRIL 2022

T: 01454 619900 E: ADVICE@DUNKLEYS.ACCOUNTANTS

WOODLANDS GRANGE, WOODLANDS LANE, BRADLEY STOKE, BS32 4JY

enjoyed many visits combining work with pleasure. The Company changed ownership many times and she finished in a very senior position in a field where women are in the minority. On reaching retirement, she worked full time from home, then became a consultant for an hour a day working as a trouble shooter, which she much enjoyed.



Home from South Africa in 1972, they bought a house in Russet Close because some distant relatives lived in the area. In 1978 they bought Awkleys, at auction, giving them plenty of room to grow vegetables and for the dogs to run about. In 1972 they had bought their first Kerry Blue terrier, Emma, and showed her at championship shows round the country in order to qualify for Crufts. Emma had six puppies, their registered kennel name became Quiksilva, and they kept a dog puppy, Rory, with the kennel name Quiksilva Sunset, who had a

very successful showing career. Emma moved on and Biddy arrived and had a litter. Rory however, completely lost interest in being shown after they moved to their present house. When Rory and Biddy died they re-homed another Emma, a champion bitch who had had a caesarean and could no longer breed. After her there was Rafferty, who had been abandoned, and finally a puppy called Molly -see above - who is still with them ten years later, and whose breeder is judging Kerry Blues at Crufts this year.

Sadly, Brian died on the first day of the second lockdown after a long battle with Parkinson's and Sheelagh is recovering from a complicated hip operation, but I have no doubt you will soon see her walking Molly in the village again.

C.D GARDEN SERVICES

Need help in the garden?
Weeding £30-£120
Grass cutting and strimming small £25
medium £40 Large £60-£70
hedge cutting £30-£60
conifer £50-£80
tree trimming £30-40
tree removal £25-£70
window cleaning and seals £6-£12
Any other enquires please contact me
cain dibley
07393334947

- All makes servicing and repairs
- Petrol and Diesel MOT Testing
- Tyres, Exhausts and Batteries
- Air Conditioning
- Latest Bosch On-Board Diagnostics
- Vehicle Sales



New Road, Olveston, BS35 4DX

01454 202030



Historical Society: April Meeting

Parish Hall, Tockington Weds. 6th April 2.30pm All welcome.

£2 entry, including refreshments. Covid precautions will be in place. (incl. masks)

In a lively, well-illustrated talk, Brian Kemp will be sharing with us some of his research into Olveston Court and Manor: The First 500 Years. His talk will cover the early years of the Court and Manor of Olveston, from the original land grant in 957 up to Elizabethan times.



The Moat and Gatehouse at Olveston Court

People associated with the Court and Manor over the centuries include many with important royal appointments, as well as nineteen Knights, nine Members of Parliament, two Lord Mayors of Bristol, fifteen High Sheriffs and Sheriffs, and seven Justices of the Peace.

Before Brian's talk, we'll be holding a short Extraordinary General Meeting to accept and recognise the retirement of some existing society officers and committee members and to elect a new committee for 2022/23. We're fairly confident this will be a straightforward and enjoyable meeting which will give us the chance to acknowledge the considerable service of several people.

This will be our last meeting before we reconvene in October. We look forward to seeing you for what we are sure will be a fascinating talk!

gsharchitects



FREE CONSULTATION

For further information please contact us on:

info@gsharchitects.co.uk
www.gsharchitects.co.uk
Almondsbury, Bristol

07780 000220

Build without planning permission

Quality design service from concept to completion

Planning, construction drawings and contract administration service tailored to suit you

Domestic, Commercial, and Sustainable Architecture.

Experienced working with Listed Buildings

Build your dream home in your garden

Development Advice and Appraisal

3D Visualisation Services

RIBA

New Passage Cat Kennels

**Large Runs ~ Heated Chalets
Licensed Cattery
in Pilning**

**Tel: 01454 632 456
www.catkennels.co.uk**



Design & Planning

Home Extensions - Change of Use - Floor Plans
Full Planning & Building Regs drawing service
Almondsbury based with successful local projects

contact Julian Lowther for friendly professional advice

t:0117 2591059 julian@jfl-planning.co.uk
m:0789 0179546 www.jfl-planning.co.uk

G.V.R PITCHER & SONS

**The Yard
Haw lane
Olveston
Bristol**



**TEL: 01454 619299
MOB: 07989 208964**

Property Care & Improvements

Severn Vale Flower Club

Do you love flowers? Are you interested in flower arranging? Perhaps this could be for you..... Severn Vale Flower Club is moving out of Thornbury to hold an Open Evening meeting for members, friends and visitors on Monday 11th April at 7.30pm in Olveston Parish Hall.

Our speaker and demonstrator will be Pam Lewis, a former blacksmith, sometimes described as a bit of a floral Pam Ayres. Pam is very down to earth and has a wonderful sense of humour and will not only demonstrate the many aspects of flower arranging and floral art but will also show how much fun and enjoyment can be involved too.

Tickets are £12. and can be purchased by ringing 01453 811089 or 01454 885213. Cannot make that evening? How about visiting us on the 2nd Monday of the month at St Mary's Church Hall, Eastland Close, Thornbury at 2pm (admission is £6) for our usual afternoon flower arranging meeting? It could be a start of a new, creative & fascinating hobby for you. For further information email: ssjytaylor@hotmail.co.uk

Tockington Manor School and Nursery

Tockington Manor School and Nursery is celebrating 75 years in education. Established as a boy's boarding school in 1947 we are now an established day School and Nursery for boys and girls aged 2 – 13 years old. We will be holding a number of events throughout the year to celebrate with our TMS families, staff, current and former pupils.

In celebration we have launched our Pathway Programme for children in Year 7 and 8 to give an extra supporting hand to those with a specific talent. At Tockington Manor School we pride ourselves on identifying and developing the talents of the individual and the Pathway Programme is an extension of what we already do so well at TMS.

George Ross, Pathway Programme Coordinator at TMS said "The school has always attracted excellent pupils and nurtured their talents to earn entry into their first-choice senior schools. The Pathway Programme is an excellent option for Year 7 and 8 pupils. We're developing an excellent programme of support, specialist tuition and unique experiences to provide our pupils with a strong platform for senior school scholarships. By bringing these aspects together we can clearly see how much our pupils benefit."

CAR - VAN - MINIBUS

**SELF DRIVE - LOW-COST - SHORT/LONG TERM
WIDE VEHICLE SELECTION - CONTRACT HIRE**

- Fully Comprehensive Insurance
- Extra Low Off Peak Rates
- No Hidden Charges
- Breakdown Cover
- Cars
- Minibuses
- Transits
- Sprinters
- Lutons & Tail Lifts

THORNBURY
SELF DRIVE HIRE

Established Over 20 Years

www.tsdhire.co.uk
Mob: 07768 232424
Email: info@tsdhire.co.uk

01454 414111

COOPER ROAD, THORNBURY IND. EST., THORNBURY, BRISTOL BS35 3UP

THORNBURY AUTOBODIES

Car & Commercial Body Repairs

- Crash Repair • Re-Sprays • Dent Repair
- Spray Booth Facilities • Full Body Jigging • Recovery
- Top Standard Of Work
- Fully Insured
- Insurance & Private Work

Courtesy Vehicles • Free Estimates • Over 25 Years Experience

THORNBURY
01454 419985

Email: thornburyautobodies.ps@gmail.com www.thornburyautobodies.co.uk
Cooper Road, Thornbury Industrial Estate, BS35 3UP

WJC

Plumbing & Tiling

Bathroom & Wet Room Design & Installations
Tiling • General Plumbing
Kitchen Installation • Plastering

Billy Cook
WJC Plumbing & Tiling

07748 085 920
wjcpumbing@outlook.com

There are currently four Pathway Programmes: Academic, Sports, Music and Arts and Drama. Each programme has their own entry requirements. There are many subject focused benefits for those pupils on the Pathway Programme, many of which will also benefit all children in Years 7 and 8. Wellbeing seminars will provide hints and discussions to help balance schoolwork, home life and their chosen specialism. Plus, excursions and workshops thanks to our partnerships with The Bristol Hippodrome and Gloucestershire County Cricket Club amongst others.

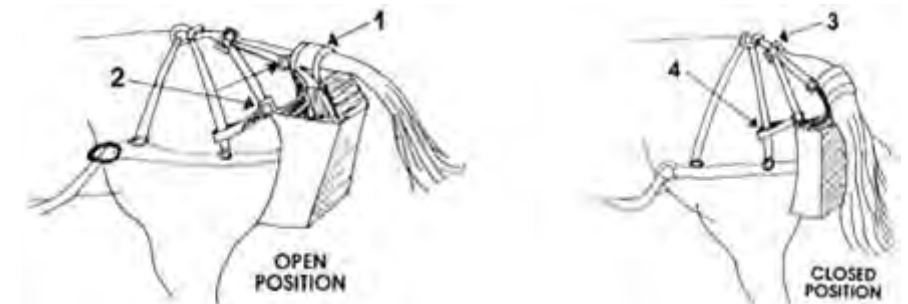
The additional experiences and support in their specialised area across the two years will ensure pupils are in the perfect place for choosing their senior school. We have an excellent success rate on gaining scholarships in senior schools and support every family throughout the application process. We have already announced several of our current Year 8 pupils who have been awarded scholarships for their first-choice schools for September.

To book a private tour of the school or nursery at a time convenient to you and your family. Please contact the registrar:
asymonds@tockingtonmanorschool.com for more information or to arrange your private tour with our headmaster.

Tackling the Issue of Horse Manure Deposits in the Parishes

From an article by Simon Thomas Able, the well-known trainer and Olympic equestrian.

Following a number of complaints by parishioners and local businesses, an investigation has taken place into implementing 'horse nappies' in the area. It was found that there are a number of very reasonably priced handy devices available on the market. An enquiry with one supplier found that a discount was available for bulk orders and that sales had increased. An illustration below shows one simple practical solution.



TMD
THE MOWER DOCTOR

GARDEN MACHINERY SPECIALISTS
SALES, SERVICE AND SPARES

E-MAIL: themowerdoctor@hotmail.co.uk WEBSITE: www.themowerdoctor.net
ADDRESS: Unit 2-3 The Rearing Unit, Oldbury Lane, Oldbury-On Severn, BS35 1RF
TELEPHONE: 01454 411 701








DEALERS FOR:










optimus™

"Optimise your Health"

Please Enquire:

Tel: 01454 528608
Email: info@optimuscp.com
Web: optimuscp.com

PHYSIOTHERAPY
CHIROPRACTIC
PODIATRY
CHIROPODY

11 The Plain, Thornbury, BS35 2AG

OLDOWN
TREE SURGEONS

TREE SURGERY AND HEDGE MAINTENANCE

PROFESSIONAL. QUALIFIED. FULLY INSURED.

www.oldowntrees.org

Antony Leicester 07800512408 info@oldowntrees.org


EC COMPUTERS

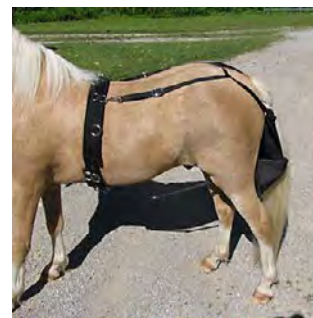
Computer support and solutions for the home and business user.

- PC/laptop repairs
- Virus removal
- Wifi/broadband issues
- Sponsors of Olveston FC

How can we help? Tel: 01454 281 500 Web: www.eccomputers.co.uk

IT Support/Repairs Office Equipment Print Solutions Telecoms Cyber Security Managed Services Software/Database applications

The appliance allows for 'capture' at a tail being raised and safe closure once the rest position is resumed. The length or makeup of the tail is not an issue as this is above the device.



Devices designed to cope with liquid as well as solid waste are also on the market. Using gravity alone, these were found to be very effective and efficient. Different sized kits are available and easily accommodate animals from the Shetland to the larger Carthorse breeds. All the devices are fully washable and made from 'green' recycled components. They come in several colours including dappled and spotted forms to match the coat of an individual horse. A self-colouring dye kit is available for personalisation beyond the normal. The devices have the advantage of waste capture which can then be returned to the stable or even delivered directly to gardeners by request. Helpful advice is available online, such as a mixing the natural waste with normally discarded straw, giving it extra horticultural value. The possibility of the extra income was welcomed by many owners.

It is important to note that none of the devices interfere with riders, standard saddles or tack. Use at gymkhanas showed no issues for the compact devices. The larger 'under horse' styles were found to unsuitable for jumping events as they could interfere with the obstacles to be traversed. Equine veterinary experts have studied the equipment at length and in particular if usage had an adverse psychological effect on horses. They concluded that once a horse had got use to wearing the new equipment no problems were noted. Even nervous animals soon accommodated the equipment and were content using it. The absence of 'spillage' resulted in much cleaner animals and less grooming time as a result.

The New York Police Department has adopted the 'catch and carry' device for their mounts after a very successful trial period and positive public comments.

The legality of enforcing the use of such equipment is being explored, however it was hoped by that the local horse-riding fraternity would be happy to take to and adopt a 'catch it all' scheme, for the benefit of the whole community.

YOUR PC GURU

COMPUTING FOR 'MERE' MORTALS

01454 616365

- Home visits
- Computer Repair
- Phone & Tablet setup
- Home Wireless & Broadband
- Smart Home Tech
- Complete Mac support

www.yourpcguru.co.uk
Technology Advice & Repairs

JC 4x4 Ltd SPECIALIST IN LANDROVER

SERVICE • REPAIR WORK • DIAGNOSTICS • MOTS • OTHER VEHICLES WELCOME

CALL JAMES: 01454 261067 / 07966 086447



07307 727244

Free Quotes

Domestic	Radiant heating
Commercial	Boilers
Breakdowns/ call outs	Radiators
Servicing	Plumbing
Installations	
Warm air heating	LPG, natural gas, oil



www.edgeheatingandplumbing.com info@edgeheatingandplumbing.com

Monday Movies



This April the Monday Movie Club at St Mary's, Olveston, presents two movies which hopefully will have mass appeal.

On 4th April we show the third outing for Daniel Craig as special agent 007. An ex-MI6 agent steals a hard drive with top-secret information exposing Agents around the world and causing M to relocate MI5. Seemingly a vendetta causes Bond to face his past in a bid to try and save M. It's a long film so bring cushions for comfort or to hide behind when the going gets tough for James! (2012, Cert 12 2hr 23min).

Then on 18th April, we show a film that follows a successful scriptwriter Gil, Owen Wilson, who is spending his vacation in Paris with his fiancée Inez, and her parents. Forced to confront his shortcomings in his relationship with his materialistic fiancée Inez, their divergent goals cause the nostalgic screenwriter to travel back to the 1920s each night at midnight. Written and directed by Woody Allen with appearances from Kathy Bates, Tom Hiddleston, Michael Sheen and Carla Bruni to name but a few! (2011, Cert 12A 1h 34min).

All movies start at 7.30pm, doors open 7pm. All welcome, all movies are free, and donations are gratefully received to cover expenses. Licenced bar and refreshments before the film and during the interval.

To join our mailing list please email: mondaymoviesolvoston@gmail.com.

Collectors' Book Fair

Saturday 2nd April, Easter Compton 10am to 12 noon

An annual Book Fair, held since 2006, takes place at Easter Compton Village Hall on Saturday 2nd April. This regional event, run by the Observer's Books Collectors Society, features thousands of vintage collectable books for sale. As well as Observer's books, others include Ladybirds, Beatrix Potter, Wayside & Woodland and many different book series on subjects like natural history, transport and military. All book enthusiasts are welcomed, and admission is free. Advice and valuations are available from the experts who come from all over the country. Refreshments served. Telephone 01454 632170 for further details.



XL Plumbing & Heating Solutions Ltd

- General Plumbing
- Boiler Installation, Servicing & Maintenance
- Gas Safety Certificates
- Bathroom Installation & Tiling

Contact Mark Mob: 07738 726803
Email: xlplumbing@hotmail.co.uk
Tel: 01454 549008
Web: www.xlplumbing.co.uk





07809 869149

01454 201640

Reliable, professional, friendly service.
Please ask for your free quotation



Squire Sweep

A chimney sweep service from
Michael Squire

Tel: 07504 253 467

Email: squiresweep@gmail.com

Visit: www.squiresweep.co.uk

MEDWAY DESIGNS
Sewing & Alterations

- Bridal Wear •Alterations
- Evening Wear •Day Wear
- Soft Furnishings & re-upholstery

Ask about sewing lessons

Delivery & Collection Service Available

Lois Coulson
0117 969 1798 /
07950 396064

loiscoulson@ymail.com

14 Watch Elm Close, Bradley Stoke

Call now for a friendly personal service

Cookin' On Gas Ltd



Repairs & Sales of all domestic appliances:



**Gas & Electric Cookers and Hobs
Washing Machines, Dishwashers
Tumble Dryers**

www.cookinongas.co.uk
enquires@cookinongasltd.co.uk

Matt Cole
1 Olive Gardens Tel 01454 851545
Alveston Mob 07715 705670

MEETING POINT


RECEIPTS AND PAYMENTS FOR THE YEAR ENDED 31ST DECEMBER 2021




Receipts	2021 £	2020 £	Payments	2021 £	2020 £
Advertisements	13652.50	13245.74	Printing	10756.40	10381.00
Interest		5.60	Insurance	213.99	335.29
			Postage	172.48	826.85
			Stationery/Materials	40.00	84.50
			Book Binding	0.00	48.00
			Gratuities	0.00	24.50
			Photocopying	0.00	6.00
			Subscriptions	0.00	
			Bad Debts Written Off	60.00	
			Charitable Donations	540.00	
			Corporation Tax	1850.00	72.95
				0.00	
Operating Balances			Closing Balances		
a) At Bank- Current Account	7793.43	3282.79	a) At Bank- Current Account	5880.66	7793.43
b) At Bank- Deposit Account	0.00	3028.40	b) At Bank- Deposit Account	0.00	
c) Debtors	0.00		c) Debtors	2411.00	
d) Creditors	0.00		d) Creditors	-518.60	
e) Add Surplus / (Deficit)	0.00		e) Expenses Paid Privately	0.00	
				21445.93	19572.53

AUDITORS REPORT

We have examined the above accounts, in our opinion they are in accordance with the records and explanations given to us.

Signed  Date 26/02/2022

Signed  Date 26/02/2022

TREASURER

MEMORIALS &
MONUMENTS



Supplied & Erected

NEIL VIZARD
01454 419108

BAMFIELD
TREE SERVICES
TREE SURGERY AND LOGS

www.bamfieldtreeservices.co.uk
07761 810483

prestige
event equipment hire

Supplying you with the best equipment to succeed!
CELEBRATIONS & CORPORATE EVENTS

CUTLERY, CHINA, GLASSWARE, LINEN, REFRIGERATION,
COOKING EQUIPMENT, BARBEQUES, FURNITURE & MORE

Fast and Efficient, we stock a wide variety of
equipment covering anything from
WEDDINGS to FESTIVALS.

For a FREE quote please call: 01179613170
info@prestigecateringhire.co.uk
www.prestigecatering.co.uk

HK **Harkell**
Building services

- MAINTENANCE
- BRICKWORK
- ROOFING
- FENCING
- REPAIRS
- PLASTERING
- CARPENTRY
- PATIO ETC

FOR A FREE QUOTATION PLEASE CALL
TEL: 01454 617110 MOBILE: 0787 6682546

Window Cleaning

07976 694744 - 0117 9085794



M. Gray Window Cleaning

Family run business for over 25 years
experience working in the Almondsbury,
Olveston, Aust areas - and nearby.

Email: mgwc1@hotmail.com

Thank You from Castle School

Castle School Friends applied for a grant from Olveston Parish Council to fund cameras for the Castle School Photography Department. The Council very generously gave us a grant of £1500 towards cameras in November 2021, and this grant has made such a big difference to the students. The Head of the Photography Department says that contributions, such as the one from Olveston Parish Council, have 'allowed us to invest in more lighting options, photographic resources and support materials. This has all led to students being able to develop their photographic skills and produce some high quality and creatively exciting pieces of work.'

Yours Faithfully

Danny Bamfield

Aust Evangelical Church

After recently losing a family member, I couldn't help but think how much easier death is to accept when you know they have gone to heaven, and that it is not the end to life or that person.

Certainly this is the message of the Christian faith and something that is proclaimed at most church funerals where I regularly hear the words spoken in John 11v25 "I am the resurrection and the life. The one who believes in me will live, even though they die," and in the next verse it says "And whoever lives by believing in me will never die. Do you believe this?"

It seems a clear enough message to me, but it does require an act on our part: to believe in Jesus Christ.

Where does a person go when they die? The Bible has two answers, heaven or hell. I would imagine most people would believe someone like Hitler or Stalin deserve the latter – although such a view would be acknowledging there is a hell. The problem is the belief that evil is 'out there' when in reality it runs through the heart of all of us. It is something we must all deal with personally; to choose right over wrong.

The Bible says, "For all have sinned and fallen short of the glory of God" Romans 3v23, and "The wages of sin is death" Romans 6v23.

It may be before passing from this life to the next that everyone has an opportunity to make their peace with God, certainly I have heard of such incidents even in the last unconscious hours of someone's life.

How much better to make one's "calling and election sure" in the here and now, and "call on the Lord while he is near" Isaiah 55.

To walk each day with Jesus is a good life, with an even better future.

greenside
Landscaping

The Cottage, Hortham Lane,
Almondsbury, Bristol BS32 4JP

Greenside Landscaping can offer a wide range of services including:

**Artificial Grass ~ Brick & Block Driveways
Decking ~ Fencing & Gates
Garden Design ~ Patios & Paths
Planting ~ Ponds & Water Features
Turfing & Seeding ~ Walling**

We pride ourselves on flexibility and we strive to meet our client's requirements and budgets.

www.greenside-landscaping.co.uk
Tel: 01454 250648 Mob: 07980 384321
Email: paulbradburn@hotmail.com

BEDLAM
www.bedlambeds.com

- Free local delivery
- Free assembly
- Free disposal of your bed

Divans / Mattresses / Ottoman & Wall beds /
Memory foam & latex mattresses / Beds made to measure / Pine, Metal & leather beds

**Open Tuesday to Friday: 9am-5pm
Saturday: 10am-3pm**

Visit our showroom: The Old Post Office
26a Gloucester Road, Rudgeway, Bristol,
BS35 3RY (by the speed camera)

01454 617 277 or 07887 853479

MORAS
Decorating Services

ANDREW MORAS
Quality Painting and Decorating Services

For your **FREE** no obligation quote contact Andrew:

07962069036

✉ andrew@morasdecorating.co.uk
www.morasdecorating.co.uk

Tavira
Algarve, Portugal
3 Bed Apartment
"can accommodate up to 8 people"

Modern 3-bedroom apartment in picturesque & historic Algarve town. 2-bathrooms including one en-suite, 2-balconies & roof terrace. Fully furnished, sleeps 6-8. Easy walking to thriving town centre. Close to railway station, golf courses & beaches. 30 minutes drive from Faro. Ideal for families or golfers. Tel: 07889 727729 Email: anthonyar@aol.com - www.aminpadtavira.co.uk

TAVIRA - EAST ALGARVE
EASYJET & RYANAIR
NOW FLYING TO FARO
FROM BRISTOL

Thornbury Stairlifts
SALES SERVICING & REPAIRS

• New & Re-conditioned Stairlifts & Warranty
• Removals & Relocations
• Free Surveys & Quotes - No Obligation
• Rentals for Straight Stairs

Independent, Professional & Friendly Advice
Over 24 years practical experience

Independent Stairlift Specialist
01454 413748 07833 318722
www.thornburystairlifts.co.uk

Church News

ST MARY the VIRGIN, OLVESTON

Apr 3	9.30am 6pm	Morning Prayer Passiontide Service	Revs Bone and Lloyd Revs Lloyd & Moss
Apr 10	9.30am 6pm	PALM SUNDAY. Holy Communion Evensong	Revs Bone and Moss Rev David Moss
Apr 15	2pm	GOOD FRIDAY SERVICE	Rev David Moss
Apr 17	9.30am 6pm	EASTER DAY. Holy Communion No Service	Rev Moss Paul Harrod
Apr 24	9.30am 6pm	Easter Anthems Evening Prayer	Janet McBride Paul Harrod

Additional: Agapé Supper, Maunday Thursday 14 April 7pm, booking required.

Contact: Rev David Moss, 01454 415190; email: mossds@gmail.com

CHAPELRY OF ST JOHN, AUST

Apr 10	9.30am	Morning Prayer	Trevor Cook
Apr 17	10am	EASTER DAY. Holy Communion	Trevor Cook

Contact: Trevor Cook, 01454 618442

Church Wardens: Jenn Dickens 632312 & Clive Roberts 632238

HOLIDAY LET 6 BERTH HOLIDAY HOME
(2 Bed, 1 Ensuite)

LADRAM BAY
OTTERTON . BUDLEIGH SALTERTON . EX9 7BX

Central Heating . Double-Glazed
Private Beach . Fishing Trips . Cliff Walks
Restaurant . Bar . Live Entertainment
Indoor Pool . Kids Club
Shop . Cafe . Takeaway

Tony Gardner
07889 727 729

ST MARY DE MALMESBURY, LITTLETON-ON-SEVERN

Apr 10	9am	Morning Prayer	Tracey Black
Apr 17	9am	EASTER DAY. Holy Communion	Tracey Black

Contacts: Tracey Black 417660 & Tim Pyper 416422 /07802 419451

ST JOHN THE EVANGELIST, ELBERTON

Apr 10	9am	Morning Prayer	Judith Heybyrne
Apr 17	9am	EASTER DAY. Holy Communion	Judith Heybyrne

Contacts: Judith Heybyrne 616725 and John Gunnery 413225

OLVESTON AND TOCKINGTON METHODIST CHURCH

Apr 3	10am	Tock Ch	Morning Worship led by Alison Smith
Apr 10	10am	Olv Ch	Morning Worship led by John Creech
Apr 17	10am	Tock Ch	EASTER DAY Worship with Holy Communion led by Rev Dr Simon Edwards
Apr 24	10am	Olv Ch	Morning Worship led by Jennifer Bone

Contact: Rev Simon Edwards 418176, simon.edwards@methodist.org.uk

THE VINE House of Prayer, Pilning Street, Awkley BS35 4HL

Meeting at 11am every Sunday and on the 1st and 3rd Wednesdays of each month at 2.30pm.

Contact: Mike and Barbara Matthews, tel. 07512 917229 or email: thevine_awkley@hotmail.com

THE OASIS CHURCH, OLD DOWN

Services at 6.30pm every Sunday. All are welcome.

Contacts: Jenny Parfitt jennyparfitt@ymail.com & Sue Tett stett56@hotmail.co.uk

AUST EVANGELICAL and LITTLETON EVANGELICAL CHURCHES

Contact: Danny Bamfield 01454 419324 e-mail danny@thebamfields.co.uk

RC CHURCH OF CHRIST THE KING, Thornbury

Mass on Sundays at 9.30 and 10.30am

Contact: 01454 412223, www.ctk-thornbury.org.uk

SOCIETY OF FRIENDS (QUAKERS), Thornbury

Contact: Brian Hawkins, hawkinsb863@gmail.com 01454 854867

EVENTS IN APRIL.

Monday 4 April, **Monday Movies at St Mary's**, 7.30pm

Wednesday 6 April, 2.30pm, **Historical Society**, Olveston Parish Hall.

Brian Kemp speaking about Olveston Court

Thursday 7 April, **Parish Hall AGM**, 7.45pm

1st and 3rd Thursday 9.00-1.30, **Thornbury Farmers' Market**.

Tuesday 12 April, 7.30pm **W.I. meeting in Parish Hall**. Contact: Angela on 615222

Tuesday 12 April, 7.30, **Aust Parish Council**, Elberton Village Hall

Monday 11 April, 6.30 for 7pm, **Severn Vale Flower Club**, at Olveston Parish Hall. Open meeting.

Monday 18 April, **Monday Movies at St Mary's**, 7.30pm

Wednesday 27 April, **Alveston Historical Society** - 'Memories of Working the Severn and Wye' by Alan Butt (author).

Monday 25 April 2pm, **Severn Vale Flower Club**, Practice Class - 'Welcome to Baby'.

Coffee Morning every Tuesday at 10.30 at Daldry Gardens lounge

Coffee Shop every Thursday at St Mary's Church Olveston, 9-12 in Term Time and 10-12 in school holidays.

LOOKING AHEAD TO MAY: Aust Pilgrimage Saturday 21st May FFI:

www.austpilgrimage.wordpress.com and May Meeting Point.

Contact details for any clubs or organisations in the Meeting Point area can be found in the Meeting Point Directory on the community website: www.olvostonandaust.com. If you would like to update your organisation's details, please email: meetingpointsecretary@olvostonandaust.com

Advertisements Neither Meeting Point, its editor, nor management committee accept any responsibility or give any guarantee in case of any dispute or claim as to quality, condition or delivery of commodities or services advertised in this magazine. It is not to be taken that publication implies recommendation. It is always advisable to check prices when ordering goods or services.

Views expressed by contributors are not necessarily those of the editor or Meeting Point magazine
Copyright Meeting Point 2022. Copyright remains with the author(s) and Meeting Point. No part of this publication may be reproduced or transmitted in any form without the prior permission of the copyright owners.

Meeting Point is printed by Motion Printing Ltd.



OLVESTON STORES & POST OFFICE

NOW STOCKING - JON THORNER'S FULL RANGE

NEW COSTA EXPRESS MACHINE IN STORE

HOME DELIVERIES (NO MINIMUM SPEND)

NEWSPAPERS DELIVERED (SMALL CHARGE)

PAYZONE FACILITY FOR BILL PAYMENTS, GAS, AND ELECTRIC TOP UPS

OUR INSTORE POST OFFICE OFFERS A WIDE RANGE OF SERVICES

CAR TAX
BILL PAYMENTS
CURRENCY ORDERS
POSTAGE
A RANGE OF INSURANCES
&
MUCH MORE

01454 612269

olvestonstores@btconnect.com

BONDS *of* THORNBURY

INDEPENDENT ESTATE AGENTS



A truly local independent estate agency with over 40 years of experience and with unrivalled knowledge of the property market within Thornbury and South Gloucestershire.
Our caring sales business is based on our reputation, honesty and integrity.

Please contact: Rowena Moncrieffe
for further details...

14 The Plain, Thornbury

Tel No: 01454 858007

www.bondsofthornbury.co.uk

enquiries@bondsofthornbury.co.uk

