

# Meeting Point



April 2023

**TRUE BLUE TAXIS**  
(OLVESTON)

**Local Taxi Company**



**Honest, Reliable and Safe**

**Cash or Card Payments**



**Mobile:**

**07967 042794**

## Top-to-Tail Housekeeping

- Professional
- Dependable
- Comprehensive service

**Trading  
Standards  
Accredited**

**Felina  
Contract Cleaning**

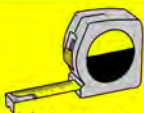
01454 201562  
07790 050187  
cleaning@felina.biz  
www.felina.biz



## Local Carpentry, Building & Plumbing

**No Job Too Small**

- Painting & Decorating
- Maintenance & Repairs
- Kitchen/Bathroom Fitting
- Static Home Repair & Refurbishments
- Handyman Service



**For More Info Visit:**

**alvestonbuilders.co.uk**

**Over 40 Years  
of Experience** ✓ **Card Payments  
Taken** ✓

**Contact Mike**

Tel: 01454 614887  
Mobile: 07932 153300/07711 411075  
Email: [enquire@alvestonbuilders.co.uk](mailto:enquire@alvestonbuilders.co.uk)

THORNBURY  
**Chiropractic**  
CLINIC

[www.thornburychiropractic.co.uk](http://www.thornburychiropractic.co.uk)

The Georgian House, 6 The Plain

**Chiropractic**

Johnatan Williams Msc DC

Carol Williams MSc DC

**Acupuncture**

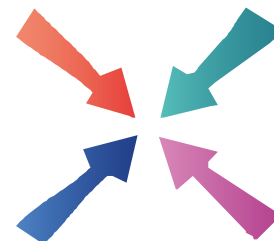
David Sanders Lic Ac. M.B. Ac.C

**Massage**

Josie Cole MT1

*Open weekdays 8.30am-7pm*

**01454 418259**



# Meeting Point

**Volume 47, Number 7, April 2023**

The community magazine for the villages of Olveston,  
Tockington, Old Down, Lower Hazel, Awkley, Ingst, Aust, Elberton and Littleton upon Severn

### EDITOR:

**Marelin Orr-Ewing**  
Courtlands  
Olveston  
Bristol BS35 4DU  
Tel: 01454 610081  
[meetingpointeditor@  
gmail.com](mailto:meetingpointeditor@gmail.com)

### ASSISTANT EDITOR:

**Angela Williams**  
Ashlea  
Haw Lane  
Olveston  
Bristol BS35 4EG  
Tel 01454 612850  
[meetingpointmagazine@  
gmail.com](mailto:meetingpointmagazine@gmail.com)

### ADVERTISING:

**Bernard Amos**  
Tel: 01454 620388  
[meetingpointadvertising@  
gmail.com](mailto:meetingpointadvertising@gmail.com)

Publication date  
*1st of each month*

Material for May 2023  
to the Editor or Deputy Editor  
by 11<sup>th</sup> April 2023

## From the Editor

It's a very full magazine this month. As well as a lovely review of Kiss Me Kate and a beautifully illustrated article on Woodpeckers, we have got details of a number of local events coming up during April. Look out for 'Cream Teas' and an Open Garden in Tockington, a Village Brocante in Littleton on Severn, plus many others in the area.

It is great news that there is a second chance to watch the film 'Eric and Jean' if you missed it first time round, when it was shown in St. Mary's. I was lucky enough to get a seat, just, on that occasion and thoroughly enjoyed it.

I was disappointed to see that Making Space for Wildlife has not asked readers to report any sightings of the Easter Bunny this month. It was probably an oversight on their part. So, if you do catch a glimpse of this rare and elusive rabbit, please let me know and I will pass on the details.

This month's cover is by Keith Burrows

Meeting Point Founded in 1976 by the Anglican and Methodist churches in Olveston, near Bristol.

**Meeting Point magazine and Meeting Point Directory are online at the  
Community Website: [www.olvostonandaust.com](http://www.olvostonandaust.com)**



# Thornbury Motors

- New and Used car sales
- Servicing, repairs and MOTs on all makes



thornburymotors.co.uk 01454 412535



Grovesend Road  
Thornbury  
Bristol  
BS35 2EF



## SAVAGE ASSOCIATES

Accountants·Business Advisors  
Corporate & Personal Tax Consultants

The Coach House, Aust Road  
Olveston, Bristol BS35 4DE  
Tel 01454 610388 Fax 01454 201541

for an initial consultation please contact:  
edd.savage@savageassociates.co.uk

## Vicarage Farm Holistic Therapy Centre

Bringing balance back  
into your life.  
Offering a wide range of  
Holistic Treatments.



### Hypnotherapy

A safe and effective treatment: to  
remove stress, anxiety, depression  
and phobias. Allowing positive and  
powerful changes in your life.

Tel 01454 614390  
www.vicaragefarm.org

## Kiss Me, Kate

Barbie Davies

The Parish Players certainly taught their audiences to 'brush up their Shakespeare' in February half term week. They whisked us through spirited scenes from 'The Taming of the Shrew' and the parallel backstage drama between the two leads and they did it with the usual panache and humour that skilled director, Linda Evans, manages to bring out in the company every time.



Paul Dimery, left, as the infuriating but loveable lead, was most impressive with his glorious singing and swaggering sparky mischief. Both he and Kate Coyle, his leading lady, who also has a beautiful voice, flipped seamlessly from Shakespearian verse to post-war American. Kate had all the cat-like verve and fire necessary

to create some wonderfully punchy (literally!) scenes between them. Kate's understandably despairing, cowed, father was well-played by Richard Newley.

Emily Jones as Bianca had a terrific voice and wonderfully flirty manner, which made for a glittering performance. Her suitor, Lucentio, played by David Proud, gave much humour and warmth to the plot with his winning song, dance and mischief. He is the cause of two gangsters getting involved in the 'production'. Played with real sparkle by the duo Phil Savage and Ray Hale, the audience were treated to many a well-timed gag and, of course, their slick and cheeky duet of 'Brush Up Your Shakespeare'.



Like all the big American musicals, 'Kiss Me, Kate' is crammed with cracking songs. The soloists gave us many a treat, such as 'So in Love', 'I Hate Men' and 'Always True to You in my Fashion', to mention but a few. However, the small-group singing by the menfolk (many of them young) was rich and rousing, while the chorus

Katy Coyle as Katherine

**D. YOUNG**  
GARDEN SERVICES  
*Fully Qualified with over 16 years Experience*  
Grass Cutting Hedge Cutting Turfing Fencing  
General Landscaping

Tel: 01454 416206 Mob: 07545 131488  
Email: d.younggardenservices@hotmail.com

**MD Aerials**   
Call Michael Dagger  
T: 01454 418 341 M: 07817 304 236

Freeview – Freesat – Sky – DAB Aerials

 Wall mounting LCD & Plasma  
televisions setting up & tuning

 mike@mdaerials.co.uk  
www.mdaerials.co.uk

**T. EDWARDS PLANT**  
Digger and Driver Hire

- Site/garden clearance
- Footings
- Drainage/soakaways
- Driveway preparation
- Stump removal
- Fencing & turfing
- Narrow access equipment



Price or day work t: 07900 372349  
t.edwardsplant@gmail.com  
CPCS/CITB qualified & insured

**Divine**  
Bathrooms & Wet Rooms

07584 666154  
Email: info@divinebathrooms.co.uk  
Web: divinebathrooms.co.uk



 **S.J FARR**  
KITCHEN FITTING  
SERVICES

Mobile: 07915673649

Our Associated Services Include:

- Plumbing
- Wall & Floor Tiling
- Decorating
- Plastering

City & Guilds Qualified

**Geoff Gulliver**  
Carpentry & Joinery, Littleton  
ALSO  
UPVC Doors, Windows and  
Conservatories. For a very  
competitive **FREE** estimate

**Ring (01454) 414947**

sound, added to by the ladies, was fulsome and bang in-tune. In fact, the chorus worked really hard presenting many different parts, including Lesley Clarke's vibrant stage manager and Paul Harrod's pompous, drawling General Howell and lovelorn Hortensio. Cameron Phillips and Jake Woodward are really promising all-rounders.

The dancers, under the imaginative eye of choreographer Jo Baxter, gave polished, characterful performances with a lovely Italian/Elizabethan flavour, making the tiny stage seem much bigger. The use of space is always delightful, as in the pretty, garlanded wedding procession up the aisle, enhanced by fairy lights studding the effective, abstract Italianate set. Andy Black and his team always produce a set that allows the action to gallop at a goodly pace; a challenging task when there are sixteen scene changes, all most efficiently managed, and well-lit, by Richard Churchill.

Costumes were a colourful mix of late 1940s, Italian folk and Elizabethan glamour, thanks to Cath Chappel. Her husband Mike's sound effects had the audience positively ducking at the sound of crockery being flung by Kate.

In fact, the whole production was full of sparky pace and punch, and the band, led by Chloe Allsopp-Jones, contributed much to that. The cueing was very crisp, the playing skilful and sensitive or good and gutsy, as the drama demanded. So much talent in a tiny hall - 'Wunderbar'.



*The final curtain call*









**Finance Available**  
Buy now, pay monthly  
Provided by **iDeal 4 Finance**

## RESIDENTIAL & COMMERCIAL FLOORING SPECIALISTS

Carpets • Luxury Vinyl Tiles • Laminates  
 Engineered Wood • Room Size Remnants  
 Vinyls • Artificial Grass

**CASH & CARRY**

**OPEN TO THE PUBLIC AND TRADE**

Tel: 01454 620707  
 email: [enquiries@phoenixflooringltd.co.uk](mailto:enquiries@phoenixflooringltd.co.uk)  
[www.phoenixflooringltd.co.uk](http://www.phoenixflooringltd.co.uk)



**Unit 15 Hemingway Business Centre**  
**Walker Way, Thornbury, Bristol, BS35 3US**

## Tockington Cream Teas

Come along for delicious 'Cream Teas' and cakes on Easter Bank Holiday Monday, April 10<sup>th</sup>, on Tockington Green; we shall be serving them between 2pm and 4.30pm. Offers of help and home baked cakes/scones gratefully received – call Maggie on 01454 610053. All proceeds will go towards the upkeep of Olveston and Tockington Methodist Church.

## First Friday Community Café at Tockington Chapel

Our next coffee morning will be on Friday 5th May in Tockington Chapel at 9.00-11.30. Please come along and invite your friends. Remember to spread the word to others who may not receive Meeting Point. Tea, coffee, squash and delicious cake will be available, cash payments only please. (Please note that we won't be holding an event on the first Friday in April, as it is Good Friday.)

These community coffee mornings are proving very popular! Thanks to everyone who came along on Friday 3rd March. We raised over £120 to support the Methodist Church buildings in Tockington and Olveston. We are delighted by the support from the local community and pleased to have found such a popular way to bring people together.

Could you help us run future coffee mornings or do some baking for our events? Do get in touch if you would like to help, or if you have any suggestions for ways to support the Chapel and the other local Methodist buildings. You can contact us via [TOCS.friends@gmail.com](mailto:TOCS.friends@gmail.com).



**2 Men Went To Mow**

All Aspects of Garden Maintenance, Plants & Shrubs Supplied, Garden Rubbish Removal, Fully Insured

Garden and Tree Service Tel: 07956 311901  
Local, Friendly and Reliable Email kev@2menwenttomow.co.uk

Tree Surgery (NPTC Qualified)  
All Types of Tree Work Undertaken  
Contract Grass Cutting  
Beds & Borders Maintained  
Pruning and Hedge Cutting  
Planting

**FREE ESTIMATES!**

**L. & J. Gulwell**  
Family Funeral Directors

1 Quaker Lane,  
Thornbury  
BS35 2AD

Local independent family funeral directors  
for over 50 years

Specialists in bespoke funeral services, burials,  
cremations & pre-paid funeral plans

Call 24hrs 01454 418 779 • [www.funerals.uk.net](http://www.funerals.uk.net)

**COMPANION AND DRIVING SERVICE**

**Driving Miss Daisy**  
We're There For You

**Now taking bookings in your area!**

- For people of all ages unable to drive but wish to remain independent
- Supported trips to the doctor, hospital, shops, bank, hairdresser, vet, etc.
- Social outings, holidays, help at home and much, much more
- DBS checked and First-Aid trained
- Dementia friendly
- Wheelchair Accessible Vehicle
- Fully Licensed

To book your Daisy  
**07951 079 558 / 0333 014 6211**  
[northbristol@drivingmissdaisy.co.uk](mailto:northbristol@drivingmissdaisy.co.uk)  
[www.drivingmissdaisy.co.uk](http://www.drivingmissdaisy.co.uk)

**Top quality Nursing and Residential Care**

**Beech House**

Beech House Care Home provides excellence in all aspects of care for all our residents, offering the best in nursing care for the elderly and residential care for people with a diagnosis of dementia.

Our unique care service includes:

- beautiful gardens
- purpose built homes with 24/7 air circulation
- spacious rooms and wide corridors
- top quality chefs
- television with DVD and telephone in each room
- wheelchair provision at no additional cost
- high technology baths and walk-in showers
- regular minibus trips
- programme of interesting and stimulating activities

**RECENTLY RATED Outstanding by Care Quality Commission**

To arrange a visit, telephone **01454 412266**  
For more information see [www.bristolcarehomes.co.uk](http://www.bristolcarehomes.co.uk)

**Bristol Care Homes**  
providing a unique care service



## The Enigma of Edward Elgar



Michael Lunts presents a one-man musical drama about the life of Edward Elgar, focusing on the complex relationship he had with his beloved wife Alice. The friends who inspired the famous "Enigma Variations" are also brought to life as, following the death of Alice, Elgar's senior by a number of years, the composer muses on the origins of that first acknowledged masterpiece, a work that put him on the musical map, and which may never have seen the light of day but for Alice's encouragement and inspiration. But what of the other women hidden within the work's 'musical portraits'? And who ultimately was Edward Elgar? Was he the real enigma? In this performance the

Enigma Variations are played live in a special piano transcription made by Elgar himself, as well as the ever popular Salut d'Amour, dedicated to the composer's wife.

The performance takes place at The United Reformed Church, Chapel Street, Thornbury at 7.30 on Saturday 22<sup>nd</sup> April 2023. Tickets are £12 from [AAGThornbury@gmail.com](mailto:AAGThornbury@gmail.com) or 01454 850933.

## Collectors' Book Fair

An annual Book Fair, held at Easter Compton Village Hall since 2006, takes place again on Saturday 15th April from 10am to 12 noon.

This regional event, run by the Observer's Books Collectors' Society, features thousands of vintage collectable books for sale. As well as Observer's books, others include Ladybirds, Beatrix Potter, Wayside & Woodland and many different book series on subjects like natural history, transport and military. All book enthusiasts are welcomed, and admission is free.

Advice and valuation on books can be gained from the expert stallholders who come from all over the country to attend.

Refreshments available. Telephone 01454 632170 for further details.



www.olvestonpreschool.co.uk/pilning-site

# Pilning Pre-School

**NOW OPEN!**

Offering amazing childcare to children aged 2-5 at the heart of our local community.

Pilning Village Hall  
Open 9:00am - 3:00pm  
Tel: 01454612074

Find us on Facebook

## Littleton Village Hall

Jane Williams

Here are details of two upcoming events in Littleton Village Hall.

### Village Brocante Sunday April 23rd 11am-4pm

Sell your vintage/antique craft items. It's £5 a table, with table-hire money going to the village hall, sellers keep the money they make on their items. Seven tables have already been booked, so please spread the word for anyone interested in selling or coming along to buy! (See advert elsewhere in the magazine!)

### Coronation Coffee Morning Friday May 5<sup>th</sup> 10.30am – 12 noon.

Coronation-themed monthly Friday coffee morning.



## The Film for April

The Monday Movie in St Mary's on 3rd April will be the film we had planned to show in February. It was nominated for so many awards that the release of the DVD was delayed until now.

Bill Nighy stars as the stuffy civil servant unexpectedly given a grim medical diagnosis. He retires, and after a few escapades, devotes his remaining time to pressurising a local council into creating a much-needed play area.

No admission charge, doors open at 7pm, film starts at 7.30pm. Tea/coffee, licensed bar. Everyone welcome. (For licensing reasons we are not permitted to print the title of the film).

## Holy Land Tour 10th -17th February 2024

David Moss, Vicar



Next year I am running a Holy Land Tour in conjunction with WorldWide Christian Travel. If you would like more details of the holiday, please email me [mossds@gmail.com](mailto:mossds@gmail.com) or phone 01454 415190 and I will post a brochure through your door. I look forward to hearing from you.

 **PawsPetCare**  
...simply for the love of animals

Providing care for your pets  
when you need it

Contact Helen for a friendly and reliable service  
07493 153520 or [enquiries@pawspetcare.com](mailto:enquiries@pawspetcare.com)  
[www.pawspetcare.com](http://www.pawspetcare.com)

## Frontline Martial Arts

Traditional Martial Arts / Taekwondo

Mighty Mites (under 10's): Fridays 4.30-5.15pm at  
Juniors (ages 10-13): Mondays 7.15-8.15pm  
Adults/over 13's: Mondays 8.15-9.45pm  
at Alveston Youth Centre



Tel: 07771 692222  
[www.frontline-ma.co.uk](http://www.frontline-ma.co.uk)

## THE WHITE HART INN Olveston



Traditional 17th Century English Pub

Catering for Parties and Functions  
Wide variety of cask & keg beers  
Skittle alley & pool table available  
Book now for Skittle Matches  
Award winning courtyard garden

Telephone: 01454 612175

## SEVERN SIDE TAXIS

SIX SEAT COMFORT  
AIR CONDITIONED CAR



AIRPORTS  
BUS STATIONS

HOSPITALS  
EVENINGS OUT

RING STEVE WARD  
**07879 601011**

## FRANCIS DESIGN & BUILD Carpentry & Building Services

For all aspects of carpentry

Doors, Skirting, Kitchens, Fencing,  
Decking, Stairs, Timber frame etc.

Call Craig on 07970 514409  
(or, if busy)

email: [craigyoung0308@live.co.uk](mailto:craigyoung0308@live.co.uk)

## News from St. Mary's

Debbie Harries

### Easter Services

April 6th 7pm

Maundy Thursday Agape Supper.

This takes the form of a Passover meal and holy communion. If you would like to attend, please contact Debbie on [ofoe-debbie@live.co.uk](mailto:ofoe-debbie@live.co.uk)

April 7th 2pm

The Last Hour

Good Friday service of readings and music with St Mary's Choir.

April 9th

Easter Day

Holy Communion 10am - We look forward to seeing you over the Easter week.

## Family worker/Chaplain for Olveston and Alveston churches and Schools

This is an exciting opportunity for someone with a passion to link young families to church, and to grow relationships between church and school.

- Part time, some weekend work required.
- Flexible working hours, predominantly in term time.
- Experience working with children essential.
- This is a part-time paid position, £12-16K. 2-3 days a week.

Enquiries should be sent to [revsrural@gmail.com](mailto:revsrural@gmail.com) and applications close 30th April

## From the Registers of St. Mary's Church, Olveston

Monday January 30<sup>th</sup>

Funeral of Roy Garlick

Friday February 10<sup>th</sup>

Funeral of Issy Phillips



## Severnside Heating & Plumbing



- Installations
- Servicing
- Repairs

Working locally since 2003. An experienced heating and plumbing engineer. For a no obligation quote please call Mike  
Mob: 07554 825813 Tel: 01454 613780



**LA Electrical Services** YOUR LOCAL ELECTRICIANS

New Builds, Rewires, Consumer Units, EV Charge Points, Landlord Reports (EICR), Testing & Inspection, Sockets, Lighting, CCTV, Security, Solar and Battery Storage & much more

f t i /laelectrical  
01454 633 336  
LAELECTRICAL.COM

# Dave Webb

## Painter - Decorator

07809 869149

01454 201640

*Reliable, professional, friendly service.  
Please ask for your free quotation*



## Baby and Toddler Music!



Have fun and enjoy music with your child

Meet others and share music as well as a cuppa and maybe cake  
Suitable for ages from 0-4 with a supporting adult of any age

10:30am Wednesdays in Severn  
Beach Village Hall

£2-5 for an hour session dependent on numbers

FFI Contact Janet Harrison [janet\\_harrison@outlook.com](mailto:janet_harrison@outlook.com) or 07562 212435 or turn up to a session



## Squire Sweep

A chimney sweep service from  
Michael Squire

Tel: 07504 253 467

Email: [squiresweep@gmail.com](mailto:squiresweep@gmail.com)

Visit: [www.squiresweep.co.uk](http://www.squiresweep.co.uk)

## NGS Volunteer Needed!

Have you heard of the saying....'Great Gardens, Great Cake'? If so, you have probably heard of the National Garden Scheme. We are a charity, primarily run by volunteers, that supports garden owners in opening their gardens for charity. Last year we raised over £3 million for nursing and health charities, from more than 3,000 gardens in England and Wales that opened for the NGS.

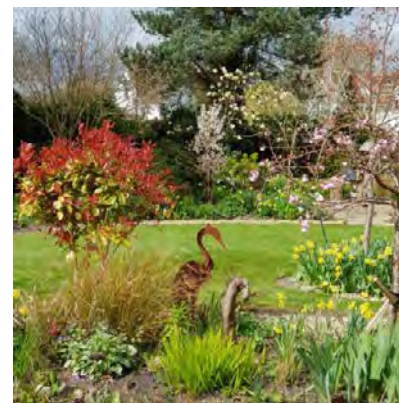
Do you have experience in Press, Publicity and Social Media (or any one of these)? If so, you may like to join our friendly team of volunteers based in the Bristol/S.Glos/Bath area.

A Publicity/Social Media Officer is required for the local team of volunteers working for the National Garden Scheme. Charity no.1112664.

For more information contact Su Mills at [su.mills@ngs.org.uk](mailto:su.mills@ngs.org.uk) or phone 01454 615438 or look on the NGS website for more information: [www.ngs.org.uk](http://www.ngs.org.uk)

## Local Garden Open

Stoneleigh Down, Upper Tockington Road, Tockington BS32 4LQ



Su and John Mills are pleased to be opening their garden for National Garden Scheme Nursing and Health Charities between 1.00pm and 5.00pm on Monday 10<sup>th</sup> April, Easter Monday.

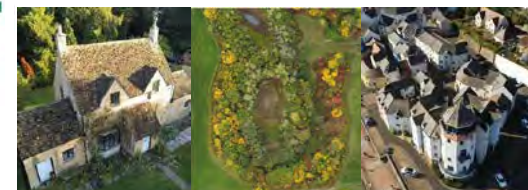
If the weather behaves itself there should be plenty of daffodils, tulips and fresh leaves on the trees. A delightful springtime display. This garden was the regional finalist in More4's Garden of the Year 2022.

Tea and homemade cakes available and plenty of seats to enjoy different aspects of the garden. All monies raised go to charity.

Admission: Adults £6.00 and children free. Dogs on leads are welcome.



For Detailed Aerial Photos of Homes,  
Rooftop Inspections & Orthomosaics  
call Neil on 07986 162088



**motion**  
motiondesignsprint

**Do you know we print the Meeting Point Magazine?**

We also print for lots of local clubs, events and businesses.

Based in Severn Beach we offer convenient off-road parking right outside our door!

We print everything from Wedding Stationery to Business Stationery

Our professional design and modern printing techniques have saved time and money for lots of people.

**Fast, efficient and professional.**

Why not let us print for you?

**01454 631289**  
info@motionprinting.co.uk  
www.motionprinting.co.uk

ALMONDSBURY PHYSIOTHERAPY AND SPORTS INJURY CLINIC

**Louise Brinson**  
Chartered Physiotherapist, hpc reg

Almondsbury Surgery, Sundays Hill  
Almondsbury, BS32 4DS

**Tel: 07786915442**  
**Fax: 014540615745**  
**E-mail: physioulouise@hotmail.co.uk**

Also at Aztec Spa Leisure Club

**ACE1**  
Window & Gutter Cleaning

**Window Cleaning**  
**Gutter Cleaning & Repair**  
**Fascia & Soffit Cleaning**  
**Conservatory Roof**  
**Solar Panel Cleaning**  
**Power Washing**

**M: 07590 201264**  
**T: 01454 436162**

 Gleaming Insurance

**Olveston and Tockington Parish Hall**  
07780 515317

*A great venue for:*

- Fitness
- Parties
- Public events
- Music & Dance

Check availability & book online at [www.olvostonparishhall.co.uk](http://www.olvostonparishhall.co.uk)

*"Our newly decorated Hall"*





## Eric and Jean - The Movie!

Jenny Newley, OPHS

Did you miss it the first time? Do you want to see it again? The first showing of the film was the talk of the villages! There will be a second showing of this wonderful film, produced and directed by local film maker Steve Humphries, on **Wednesday 12<sup>th</sup> April** in **Olveston Parish Hall, Tockington**, starting at 3pm. Doors open at 2.30pm and there will be tea, coffee and refreshments - donations welcome. Admission is free and everyone is welcome. Save the date!

Steve Humphries has made many award-winning films for the BBC, ITV, Channel 4 and the Discovery and National Geographic networks through his independent company Testimony Films.

In 'Eric and Jean', he tells the stories of two much loved and respected local residents: Eric Garrett (aged 93) has spent his whole life observing and, later, recording and researching his beloved parish of Olveston; and Jean Panes (aged 98), a country girl, spent much of her adult life in the local farming community, before retiring to enjoy her large family

(which now runs to 11 grandchildren and 18 great-grandchildren).

The film uses photographs from Eric's extensive collection and pictures from Jean's family albums, as well as period archive film, new face to face interviews with Eric and Jean, on-the-ground footage of the village filmed last September, and drone footage showing, from above, the beautiful countryside surrounding the parish and its landmark buildings. Truly, this is Olveston as you've never seen it before!



*Jean as a young girl*

Reaction to the film at the first showing was warm, vocal and heartfelt. Steve, Eric and Jean, together with cameraman Nathan Ridler and his son, drone cameraman and editor, Cameron Ridler, have created a wonderful record of two people living through good and bad times, working hard, finding love and romance, but also experiencing struggle and loss, all set to the beautiful backdrop of our parish.



*Even as a boy, Eric was a keen observer*



*Bristol Carriage Masters*

- Religious or non-religious funerals
- Bespoke funerals for burial or cremation
- Fully guaranteed pre-paid funeral plans
- Direct cremations



177 Crow Lane, Henbury, Bristol, BS10 7DR  
Telephone: 0117 950 8066  
Website: [www.bcm-funerals.co.uk](http://www.bcm-funerals.co.uk)  
Email: [admin@bcm-funerals.co.uk](mailto:admin@bcm-funerals.co.uk)

## Windmillcare Homes

— great places to Live



### Windmill House

The original, elegant home in a delightful rural setting with 2 acres of beautiful gardens delivering unrivalled care

01454 413818



### OSBOURNE COURT

Our brand new purpose-built home providing exceptional specialist dementia care in the heart of the village of Stoke Gifford

0117 944 8700

**Residential, Short-term Respite  
and Day Care available**

[enquiries@windmillcare.com](mailto:enquiries@windmillcare.com)

or [www.windmillcare.com](http://www.windmillcare.com)

## TOCKINGTON OSTEOPATHY

HELPING YOU BACK TO HEALTH

### Effective Treatment of:

- Back and Neck Pain
- Arthritic and Rheumatoid Pain
- Joint Pain and Injuries
- Sciatica and Trapped Nerves
- Tendonitis and Muscle Injuries
- Tension Headaches

Please call on **07870 219249** or visit our website [www.tockingtonosteopathy.co.uk](http://www.tockingtonosteopathy.co.uk) to make an appointment or discuss how we can help.

Run by Natalie Gladstone - over 20 years' experience.

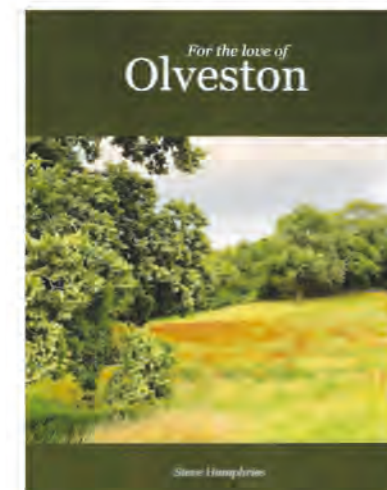
Easy parking on site - all major health insurances covered.

Old Down Hill, Tockington, BS32 4PA.

The one disappointment about the first film show was that Eric was not there to enjoy the reaction. We are delighted that Eric is now out of hospital and plans to be present for this occasion.

Steve has written a book, called 'For the Love of Olveston', to accompany the film. It tells the broader history of the parish through the memories of Eric, Jean and several other local people, aged around ninety, whom Steve has interviewed. It is illustrated with over a hundred photos from Eric's private collection and family photos from other participants too.

At the first film show, copies of the book sold out fast and many people were left wanting a copy. More copies have now been printed (although, at the time of writing this in early March, a third of this reprint has already been sold), so do be sure to come along on 12<sup>th</sup> April with £10, or a cheque book, for every copy you want to buy.



If you would like to reserve a copy of the book, and collect it before the film show, ring Jenny or Richard on 01454 202011,

## Friends of St. Mary's

The prize winners in the March draw, held on 2nd March 2023 were:

Amount	Number	Name
£150	619	Ms E Vetterlein, Olveston
£75	342	Mr B Arkell, Olveston
£50	173	Mr W Morgan, Tockington
£25	395	Mr M Grosvenor, Tockington
£25	405	Mrs S Farr, Olveston
£20	345	Mrs C Mason, Tockington
£20	461	Mr & Mrs R Smith, Olveston
£20	476	Mrs A Harley, Olveston
£20	616	Mrs S Fairhead, Oldbury on Severn
£20	372	Dr & Mrs M Wright, Olveston

If you are not yet a member and wish to join the lottery, please telephone Andy Phillips on 01454 614890 or email [andisp28@hotmail.co.uk](mailto:andisp28@hotmail.co.uk).

**Tel: 01454 885766**  
**Mob: 07724 166917**

# Ridge

## Roofing and Property Maintenance

Roofing ❖ Chimney Repairs ❖ Lead Work  
Guttering ❖ External Painting  
General Maintenance ❖ **FREE Estimates**



# D-CR

## DOMESTIC APPLIANCES



**DOMESTIC APPLIANCE REPAIR SPECIALIST**

- WASHING MACHINE
- TUMBLE DRYER
- DISHWASHER

- FRIDGE FREEZER
- COOKER
- HOB OR HOOD

**Fast, friendly and efficient service**  
**Sales - Service - Repair**

**Tel: 01454 850522 - Mobile: 07917441539**  
**Email: d-cr@live.co.uk - Web: www.d-crdomesticappliances.co.uk**

## EARTHWORKSUK

We offer a range of recycled and quarried products including 6F5, type 1, topsoil and decorative stone. These can be delivered straight to you on site or collected from us at our yard in Cromhall. Check out all we can offer you on our website or contact us using the details below.

Skip Hire

Top Soil

Recycled Aggregates

Grab Lorry Hire

Tipper Hire

info@earthworksuk.co.uk www.earthworksuk.co.uk  
Orders Line: 07782472727  
Bristol: 01179 828265 - South Glos: 01454 501037




## Lending with Heart and Mind

South Gloucestershire Council fund  
a not-for-profit loan scheme for homeowners  
and landlords\*.

We understand the expense of maintaining  
your home and we work with you to take the  
stress out of funding repairs, improvements or  
adaptations.

We see you as an individual, not a credit score.  
Our knowledgeable team of advisers will guide  
you through the process of applying for a home  
improvement loan.

For a no-obligation assessment  
or more information visit  
[www.lendology.org.uk](http://www.lendology.org.uk) or call 01823 461099

Heatherton Park Studios, Bradford on Tone, Taunton, TA4 1EU

\*subject to eligibility

# Aust Parish Council

## Coronation 'Big Lunch' Events



The coronation of King Charles III will be held on Saturday 6<sup>th</sup> May, with national celebrations across the weekend. Part of these will be 'Big Lunch' community events, to be held on Sunday 7<sup>th</sup> May. The parish council is attempting to get some grant funding to assist with holding lunch events in each of the three villages of our parish – keep an eye out for more details!

## Annual Parish Assembly

The Parish Assembly is a chance for the community to hear about what the parish council has been doing to represent them over the last year, and to discuss any issues of concern. This year's assembly will be held on Tuesday 11<sup>th</sup> April at 7.00pm in Elberton Village Hall. One of our SGC ward councillors will be present, and we try to get another speaker on a matter of general interest (to be confirmed). Please do come along.

## Could you serve your Community as a Parish Councillor?



Next month there will be elections to the parish council, alongside the South Glos. Council elections. Anyone who thinks they might be interested in being part of the council is warmly encouraged to talk to one of the current councillors (contact details at [bit.ly/austpc\\_main](http://bit.ly/austpc_main)) or contact the Clerk to ask any questions they might have and find out a bit more about what is involved. Parish councillors get involved in a broad range of village issues: in recent months we have covered litter, highway maintenance, traffic, the Jubilee celebration and many other matters. Several of the current councillors are not planning to stand for re-election this time, so we really need some new faces to step forward and represent their communities.

Election nomination packs are available from South Glos. Council - details at [beta.southglos.gov.uk/stand-for-election/](http://beta.southglos.gov.uk/stand-for-election/) - or contact the Parish Clerk. Please note that the deadline for submission of nominations is 4:00pm on the 4<sup>th</sup> April 2023 so if you would like to stand, you need to take action straight away.

## New Requirements for Voter Photo ID at Elections

From the coming election in May 2023, the government have introduced new requirements for voters to present photo ID when attending a polling station to vote. This may be a passport, driving licence or one of a range of other official documents which include a photo – the full list is available from the Electoral Commission website ([www.electoralcommission.org.uk/i-am-a/voter/voter-id](http://www.electoralcommission.org.uk/i-am-a/voter/voter-id)). If you don't have a suitable form of ID, you can apply for a Voter Authority



# LINELA

embroid | print | promote

One place for everything promotional.  
Specialising in embroidery,  
printing and branded gifts



**T Shirt Printing**  
**Sports wear**  
**Work wear**  
**School wear**  
**Promotional Products**

Call us: 01454 615300

Email us: [sales@linela.co.uk](mailto:sales@linela.co.uk)

[www.linela.co.uk](http://www.linela.co.uk)



**Livewire Electrics**  
Electrical & Mechanical Solutions



Domestic, Commercial  
and Industrial Installations

All electrics for new build, extensions and alterations to satisfy mandatory Building Regulations. Landlords safety inspections  
Portable Appliance Testing (PAT)

Electrical and electronic service and repair  
For 24 hour call-out service available please

call Peter Jones: Tel: 07880 858785

Email: [pete.livewire@blueyonder.co.uk](mailto:pete.livewire@blueyonder.co.uk)

Local number Tel: 01454 613482

Visit our web site at  
[livewire-electrics.co.uk](http://livewire-electrics.co.uk)

**BonneFreshClean**  
Carpet & Upholstery Cleaning Specialists

Love the look and smell of  
clean and fresh carpets and  
upholstery?

Bonne Fresh Clean brings to  
you a professional carpet and  
upholstery service that will  
leave them sparkling and fresh.

Call for a free  
no obligation  
quote today!

- Thorough, gentle deep cleaning, no residues
- Child and pet friendly treatments
- Latest industry approved qualification and full insurance



Bonne Fresh - Relax and enjoy beautifully clean  
and fresh carpets and upholstery!

T: 01454 436001 M: 07774 908410

W: [www.bonnefreshclean.co.uk](http://www.bonnefreshclean.co.uk)

44 Townsend Lane, Almondsbury, Bristol, BS32 4EQ

## Cookin' On Gas Ltd



Repairs & Sales of all  
domestic appliances:

GAS  
safe  
REGISTER  
211879

Gas & Electric Cookers and Hobs  
Washing Machines, Dishwashers  
Tumble Dryers

[www.cookinongas.co.uk](http://www.cookinongas.co.uk)  
[enquires@cookinongasltd.co.uk](mailto:enquires@cookinongasltd.co.uk)

Matt Cole  
1 Olive Gardens Tel 01454 851545  
Alveston Mob 07715 705670

Certificate, details are also on the Electoral Commission website. Please note, the deadline to apply for a Voter Authority Certificate for the coming election is 25<sup>th</sup> April.

### Next Parish Council Meeting

Our next meeting will be held on Tuesday 11<sup>th</sup> April at around 7.30pm (after the Parish Assembly) in Elberton village hall. Agendas for council meetings are posted on the village noticeboards at least five days before the date of the meeting and are also available on the council web page ([bit.ly/austpc\\_docs](http://bit.ly/austpc_docs)). Residents are very welcome to attend.

## Aust Parish Council

Serving the communities of Aust, Elberton  
& Littleton-upon-Severn

Emma Pattullo, Parish Clerk

(01454) 837271 /

[austparishcouncil@gmail.com](mailto:austparishcouncil@gmail.com)

**u3a**  
Thornbury

## Welcome Meeting

Thornbury and District U3A has nearly 1,800 members, and around 90 different interest groups, meeting at various venues throughout the area - but there is always room for more! The groups mainly meet during the day and interests range from Archaeology to Walking, with all subjects in-between. Some meet weekly, other less often, and they include physical activities, crafts, board and card games, organised visits to gardens and churches, concerts and theatre as well as purely educational topics.

Our next Welcome Meeting will be held on Monday 20<sup>th</sup> April at 3.30 pm in St Mary's Church Hall, Eastbury Road, Thornbury, BS35 1DR. Please come along as we would love to meet you.

Details of all our groups, including Group Leader contact details, venue and times of meeting, can be found on our website: [www.thornburyu3a.org.uk](http://www.thornburyu3a.org.uk). For further information, visit our website or phone our Membership Secretary, Jackie Gitsham on 01454 858438 or our Chairman, Norman Taylor on 01454 418396.



**XL Plumbing & Heating Solutions Ltd**

- General Plumbing
- Boiler Installation, Servicing & Maintenance
- Gas Safety Certificates
- Bathroom Installation & Tiling

Contact Mark Mob: 07738 726803  
Email: [xlplumbing@hotmail.co.uk](mailto:xlplumbing@hotmail.co.uk)  
Tel: 01454 549008  
Web: [www.xlplumbing.co.uk](http://www.xlplumbing.co.uk)



## Beauty at the Barn

4, Grey Gables, Vicarage Lane, Olveston  
For appointments telephone Nicola on  
01454 201717



Jessica Manicures  
GELation Nails  
Shellac Nails  
Jessica Pedicures  
Spray Tanning  
Waxing  
Ear Piercing  
Eyelash Perming  
Eyebrow Shaping  
Eyelash tinting  
And more....  
Evening appointments available  
Gift vouchers available



Olveston & Tockington  
Tennis Club

OPEN DAY 1<sup>st</sup> April 2pm – 5pm

Introducing a brand new coaching  
programme with TH Tennis.

Free for all kids and adults on the  
day, scan QR to book your place.



SCAN ME

[www.ottctennis.co.uk](http://www.ottctennis.co.uk)

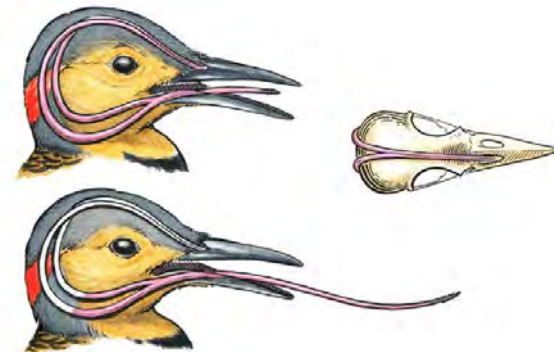
## Woodpeckers

Paul Godwin

A sound many people will have heard whilst walking close to woodlands is a 'drumming' sound, another is a 'laughing sound' of a bird - usually as it is seen flying away into the distance or cover. These are the sounds of two of our most common woodpeckers. In the UK there are three breeding members of the woodpecker family: the great spotted, the lesser spotted and green woodpeckers. Two of these, the green and the great spotted we both see and hear locally in our countryside and gardens.

The lesser spotted is our smallest woodpecker - approximately the size of a sparrow - and is hardly ever seen. It is possible they are present locally, but I have never seen one. They are a secretive bird living mainly high up in the tree canopy. There is also the wryneck, which is of the woodpecker family, but it is an autumn migrant and can only be seen on eastern and southern coasts.

The green woodpecker is probably the woodpecker that most people could describe. It is the bird with the laughing call sometimes referred to as 'yaffling'. Its flight is undulating, they beat their wings three or four times, then glide and then repeat. More often than not you will see the bird flying away from you once disturbed, as it is quite a shy bird. It often feeds on the ground looking for ants, which is its favoured food, and you might spot moss on the ground which has been lifted in its search for ants. It has a very long tongue which it uses to suck up ants from the ground. The tongue is, in fact, so long it coils within the back of its skull to fit inside its head.



It is a very recognisable bird with dark green wings, a pale breast, a yellow rump and a prominent red cap. The sexes are slightly different. The male has a red streak or moustache below its cheeks, but the female's 'moustache' is black.

To breed successfully they need to have areas where there are trees for nesting and open ground for catching ants. Whilst woodpeckers excavate their nest in tree trunks using their beaks, they are not the woodpecker which you hear drumming on tree trunks. They rarely do this. The green woodpecker's beak is fairly weak and they only 'chisel' into soft wood to make a nest. It is quite likely that a woodpecker will return to the same hole in a tree to raise its brood of 5 to 7 eggs each May. Each parent will take half the brood to teach them where to



### MYNEAT TECHNICAL SUPPORT FOR YOU - AT HOME

I'm Jed, the Tech Guy - I have a world of technical knowledge and the patience of a saint!  
No matter how big or small your issue, I can solve it either in person, over the phone or on line.

LAPTOPS, COMPUTERS, PRINTERS, MOBILE PHONES, TV's, XBOX, JUST ABOUT ANYTHING REALLY

And best of all – I can come to you! Silver Surfers and technophobes - I'm your man.

I know your requirements are unique and because I work independently for you,  
I can deliver the most affordable solutions to your doorstep.

I also support local customers with personal shopping. If you need a trip to Curry's PC World, John Lewis, Apple or the store of your choice I can advise you on the best deal to match your tech requirements.

So what are you waiting for, call me and your tech issues will be resolved in no-time!

Email: [help@myneat.co.uk](mailto:help@myneat.co.uk) Tel: 01454 406000 Web: [myneat.co.uk](http://myneat.co.uk)

I'M STILL AT COLLEGE SO IF I DON'T REPLY TO YOUR CALL IMMEDIATELY, PLEASE GIVE ME A  
CHANCE TO GET BACK TO YOU OR EMAIL WITH SOME DETAILS, THANKS



**PREMIER HOMECARE** Delivering Outstanding Live-In Care

A COVID-safe and affordable alternative to nursing home care.

Our fully managed, affordable 24 hour Live-In Care service allows you or your loved one to continue living in the safe, familiarity and comfort of the family home.

Our staff are hand picked specifically to match the personal needs and requirements of each individual client; guaranteeing you a bespoke and tailored service.

**24 hour Care at Home** - carers carry out all required duties following a personalised care-plan. They can manage medication, personal care, domestic duties as well as shopping and meal preparation plus trips out where required.

**0117 456 2490**  
www.premier-homecare.co.uk

homecare.co.uk  
Homecare.co.uk Review Score for Premier Homecare

Offices at:  
24 Canford Lane  
Westbury-on-Trym  
BS9 3DH

67 Stoke Hill,  
Stoke Bishop  
BS9 1EP

Inspected and rated Q  
**Outstanding** ☆

"We are delighted with the Live-In care that our mother receives in her home. The carers are patient, kind and very well-trained. We trust them completely with our mother's care."  
ML, November 2020

**el cuisine**

Catering for any occasion  
Private parties, Birthday and Anniversary Celebrations,  
Weddings, Funerals, Corporate Events,  
Formal Dinners, Shoot Lunches... whatever the occasion

www.el-cuisine.co.uk Please contact Emma 07931952939 info@el-cuisine.co.uk

**Tockington Manor School and Nursery**  
for boys & girls aged 2 - 13

Limited places available for Reception and Year 7 2023 entry

Book your private tour of the school with our Headmaster at a time convenient to you.  
01454 613229 www.tockingtonmanorschool.com Scan the QR.

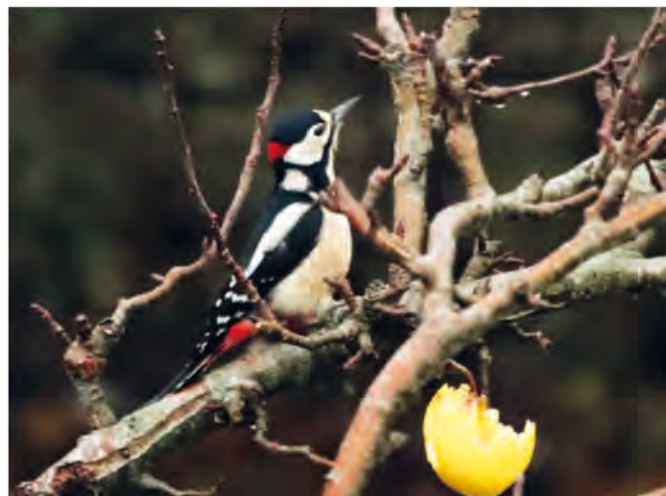





feed, which is when they are most likely to be seen in gardens. The other times they frequent gardens is when ground is frozen and they cannot locate ants, so they may come into gardens to eat fruit - as in the photograph (left) taken in my garden in January.

The green woodpecker is a resident breeder with approximately 52,000 pairs in the UK. It is however absent from Ireland and the north and west of Scotland. The species overall is doing very well and it is believed their population may have doubled since the 1970s. Due to its distinctive call folklore has given it some other names such as laughing Betsey and yaffingale, rain bird and wet bird. They apparently have the mythical ability to summon rain!

The great spotted woodpecker is the bird we hear creating the distinctive drumming sound. This is at its peak in spring when the male birds are defining their territories, but you can hear this at other times of the year. The drumming sound is also the bird drilling with its strong bill to excavate a nest and to seek food. Their skulls are shock absorbent due to the ferocity of their drumming. In fact, scientists have studied the bird in order to develop improved protective



headwear for humans. The photograph on the left is of an adult male bird, taken in our garden in January.

The great spotted woodpecker eats various insects, including beetle larvae, caterpillars and spiders. In spring it will also eat the young of



LITTLETON-ON-SEVERN  
VILLAGE HALL

## VINTAGE, ANTIQUE & CRAFT BROCANTE

Planning a Littleton loop  
country walk, or a lazy  
Sunday lunch at the White  
Hart? Come and browse  
our village hall Brocante  
too!

Sunday April 23 11am-4pm

If you are interested in hiring a £5 stall  
contact 07961048613

keeping your garden  
beautiful...

ask us about  
LAZYLAWN

- LazyLawn - superior artificial  
grass supply and installation -  
licensee for Bristol & South Wales
- landscape design and  
build with 25 years experience
- tree surgery
- garden makeovers
- regular garden maintenance

**Garretts Gardens  
and Landscapes**

for Garretts Gardens or Landscapes  
t 01454 614111 m 07974 109919  
info@garrettslandscapes.co.uk  
www.garrettsgardens.co.uk



The agent  
for all seasons

Come rain or shine,  
lisa costa estate  
agents have the  
experience and  
knowledge to take  
you smoothly through  
the moving process.



**lisa costa**

RESIDENTIAL SALES & LETTINGS

53 High Street | Thornbury | BS35 2AR  
01454 279734 | sales@lisacosta.co.uk | lisacosta.co.uk

Please note: If your property is currently on the market, the terms and conditions of your  
Existing agency agreement must be considered before instructing ourselves.

other birds who nest in the cavities of trees. Nuts and seeds are especially important to its diet in winter, which is why it is frequently seen on bird feeders. It is a medium sized bird, similar in size to the blackbird. Its colours are pied black and white plumage with a red patch on its lower belly. The male bird has a red patch on the nape of its neck which the adult female does not have. However, be warned, juvenile female birds have red markings on their crown so can be mistaken for adult males.

Like the green woodpecker, it has an undulating flight pattern. Out in the countryside it can be quite shy, so it is often much easier to observe the bird within your garden. Its practice of visiting gardens is now becoming much more common, and we see adult males, females and juveniles visiting the trees and nut feeder in ours. Its population is also doing well, it is believed the species has increased by 300% since the 1970s. It is a species that can benefit from tree diseases, as this can make nest excavation easier due to the wood rotting or becoming softer. It is a resident breeder with approximately 140,000 pairs found across most of the UK, but not on Scottish islands, highlands or in much of Ireland.

## Olveston and Tockington WI

March was a busy month for OTWI with a fascinating talk called 'The Scientific Detective' given by Carolyn Morton, a retired Forensic Science lecturer. A group of members had a trip to Bristol where they had a tour of backstage at the Bristol Old Vic Theatre, and we also had a get together in a local hostelry! Our guest in April is Lynda McClaren who is an experienced guide at Berkeley Castle.

We have welcomed many new members over the last few months and if you are interested in joining us, please contact Angela Green on 01454 615222.

Olveston and Tockington WI meet on the second Tuesday of the month at 7.30pm at Olveston Parish Hall.

**\*\*Introductory Offer\*\***  
£10 off any 60 min treatment

**Pamela MacLeod**  
HOLISTIC THERAPIES  
REFLEXOLOGY • MASSAGE • AROMATHERAPY

Member of Federation  
of Holistic Therapists

07765804144

FULL BODY MASSAGE	60 MINS	£45
*AROMATHERAPY MASSAGE	60 MINS	£48
BACK, SHOULDER & NECK MASSAGE	30 MINS	£25
REFLEXOLOGY	60 MINS	£45

**Please allow at least 15 minutes for Consultation**

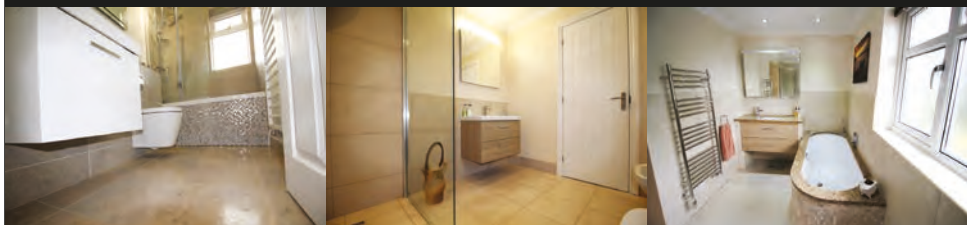
*\*A blend of pure essential oils will be tailored to address each individual's needs.*



# Paul Whittaker

## BATHROOMS & WETROOMS

DESIGN . SUPPLY . INSTALLATION



Tel: 07879 666221 . Website: [www.paulwhittakerbathrooms.co.uk](http://www.paulwhittakerbathrooms.co.uk)



## Village Care

Our local Care and Support staff can assist with all your Homecare requirements, from cleaning and domestic duties to personal care, we can tailor our service to meet your needs.

Please contact us for a free no obligation assessment.

T: 01454 415861 E: [info@village-care.co.uk](mailto:info@village-care.co.uk)

63 High Street Thornbury [www.village-care.co.uk](http://www.village-care.co.uk)



## Olveston Parish Council

### Traffic Monitoring

Parishioners will no doubt be aware of the VAS (vehicle activated signs) monitors placed around the villages of Tockington and Olveston. On Lower Tockington Road during the period 11th December 2022 to 22nd January 2023 the average speed recorded was between 27 and 32 mph, although one vehicle was recorded in January travelling at 62mph. Vehicles exceeding 60 mph were recorded on 3 occasions whilst those travelling in excess of 50 mph were recorded on 29 occasions. The Council continues to relocate the monitors on a regular basis. It is the Council's intention to purchase an additional monitor in the near future.

### Speedwatch

This is very much linked to the above item. Certain speed signs within the Parish were occasionally illegible! South Glos Council has now rectified this situation so that Speedwatch can now be recommenced. We are now looking for volunteers to support those who had previously signed up. If you are at all interested, please contact our clerk: [clerk@olvestonparishcouncil.gov.uk](mailto:clerk@olvestonparishcouncil.gov.uk)

### Council Funding 2023-24

The Council agreed a precept of £72,200 for the forthcoming year. This represents the Council's main income for the year and is a 5% increase on the previous year. This is charged to residents as part of their Council Tax. For an average household this works out at £80 p.a. - £1.54 per week.

### Parish Councillors

Elections to the Parish Council will take place in May alongside the South Glos. elections. If you are at all interested in getting involved in Parish and Community matters, please contact our clerk: [clerk@olvestonparishcouncil.gov.uk](mailto:clerk@olvestonparishcouncil.gov.uk). Parishioners are always welcome to attend the monthly Council meetings on the fourth Tuesday of the month, in the Queen Alexandra Memorial Pavilion, which give an insight in to how parish matters are conducted.

### Annual Parish Assembly

A reminder that this will be held on Thursday 20th April at 7.00pm in Olveston Parish Hall. We are inviting representatives of various organisations within the Parish to give a 5-10-minute presentation during the evening. If you are interested, please contact [patsavage@olvestonparishcouncil.gov.uk](mailto:patsavage@olvestonparishcouncil.gov.uk) Drinks



**Legal advice**  
that brings  
balance to life

Award winning legal advice  
to help you navigate change  
and plan for the future.

**gl** LAW

Let's talk about you or your business [www.gl.law](http://www.gl.law) 0117 906 9400

BUSINESS SERVICES · PROPERTY · DISPUTES · FAMILY LAW · WILLS & PROBATE

- All makes servicing and repairs
- Petrol and Diesel MOT Testing
- Tyres, Exhausts and Batteries
- Air Conditioning
- Latest Bosch On-Board Diagnostics
- Vehicle Sales



**GREEN LANE GARAGE**  
OLVESTON

New Road, Olveston, BS35 4DX  
**01454 202030**

the Good Garage Scheme 




and nibbles will be served at the end of the evening, which is scheduled to conclude just after 9pm.

### Coronation Celebrations

Whilst the Council will not be involved in organising events within the Parish, other organisations will be putting on events. There will be street parties in Old Down, Orchard Rise in Olveston and Manor Park in Tockington.



## Holes, heroes, homes and *Lissotriton helveticus*

With the arrival of spring, the Making Space for Wildlife project is working on helping several species that live amongst us.

We are continuing our efforts for hedgehogs and have recently joined South Gloucestershire Council's 'Hedgehog Heroes' project. The aim of this project is to ultimately create 3000 hedgehog highways (AKA holes in garden fences) across South Gloucestershire. Creating hedgehog highways in our gardens is the best thing we can do at home to help hedgehogs. The holes create safe routes for hedgehogs to move around at night, finding food and shelter, and they only need to be about 13 cm x 13cm. If you do create a hole, please log it on the Big Hedgehog Map (<https://bighedgehogmap.org/holes-for-hedgehogs-home/map-hedgehog-sighting>). Once on the mapping website, you'll see there is question about regional projects – please select the South Gloucestershire Hedgehog Heroes. Alternatively, please send us the details of your hedgehog highway (or hedgehog sighting) and we can log it for you: [olvestonhedgehogs@gmail.com](mailto:olvestonhedgehogs@gmail.com).

Speaking of homes, readers of Meeting Point may recall we installed swift boxes on the Parish Hall and St Mary's Church last spring. We are now investigating ways to encourage swifts to move in, hopefully we will have an update on this soon.

Based on feedback we've had from residents, we plan to shift our species focus from swifts to reptiles and amphibians. So that's the connection with *Lissotriton helveticus* in the title of this article. Otherwise known as the palmate newt, it is not as famous as its cousin the great crested newt, but it is the UK's smallest newt. We will be working on plans to help reptiles and amphibians around the Parish in the coming months.

*Making Space for Wildlife is part of the Olveston Parish Council Biodiversity backed and funded initiative.*





**gsharchitects**



**FREE CONSULTATION**

For further information please contact us on:

info@gsharchitects.co.uk  
www.gsharchitects.co.uk  
Almondsbury, Bristol

07780 000220

Build without planning permission

Quality design service from concept to completion

Planning, construction drawings and contract administration service tailored to suit you

Domestic, Commercial, and Sustainable Architecture.

Experienced working with Listed Buildings

Build your dream home in your garden

Development Advice and Appraisal

3D Visualisation Services

**RIBA**

## Tea and Chat

*Lynn Shelley*

If you'd like to socialise with a group of lively people, why not come to Tea and Chat? Tea and Chat was set up for people who find it difficult to get out and about but would really like to make new friends or meet up with friends not seen for some time.

The next get together will be at 2.30pm on Friday April 14<sup>th</sup> at the Oasis Church, Old Down. Tea and cake are free and so is transport if you need it. The only thing we ask for is a small donation towards the heating.

Interested? Then call Lynn on 01454 612201 or Lesley on 01454 613804 for more information. We'd love to see you in April!



## Olveston Parish Hall Needs You!

*Phil Savage*

We are extremely fortunate - and indeed privileged - to have the wonderful facility of Olveston Parish Hall in our community. It provides a venue for a hugely diverse range of activities. There can be very few of us who have not at some time used the hall, or attended an event accommodated there. The recent Parish Players show 'Kiss Me Kate' is a prime example of what can be provided to give a real buzz to our community.

None of this just happens. A loyal and dedicated management committee oversees all aspects of the running of the hall. We have already lost one member and are about to lose a second after many years of service. The remaining committee is relatively 'senior' now and we urgently need an injection of younger members to help ensure continuity of management and therefore secure the future of the Parish Hall. The two roles now needed are Hon. Sec. and Bookings Coordinator. Both are vital to the smooth running of the venue and are a commitment, but not unduly onerous.

We are the envy of all other local venues because of what we can offer, including those in Thornbury where there have been recent losses of performance facilities. It would be tragic if we were to lose our hall because of lack of management input.

If you think you can help, please contact Phil Savage (Chair of Parish Hall Committee): [pesavage@btinternet.com](mailto:pesavage@btinternet.com) or Richard Newley: [richard.newley@tiscali.co.uk](mailto:richard.newley@tiscali.co.uk) who can provide you with further details.

## New Passage Cat Kennels

**Large Runs ~ Heated Chalets  
Licensed Cattery  
in Pilning**

**Tel: 01454 632 456  
www.catkennels.co.uk**



**Design & Planning**

Home Extensions - Change of Use - Floor Plans  
Full Planning & Building Regs drawing service  
Almondsbury based with successful local projects

contact Julian Lowther for friendly professional advice

t:0117 2591059 [julian@jfl-planning.co.uk](mailto:julian@jfl-planning.co.uk)  
m:0789 0179546 [www.jfl-planning.co.uk](http://www.jfl-planning.co.uk)

## G.V.R PITCHER & SONS

**The Yard  
Haw lane  
Olveston  
Bristol**



**TEL: 01454 619299**

**MOB: 07989 208964**

**Property Care & Improvements**

## Start your NHS career with us

Looking for a role to fit around you?

Perhaps you're considering a career change or a fresh new challenge in 2023?



### We're recruiting in South Gloucestershire

Whether you're working in our Minor Injuries Unit or across our community teams, we'll help you develop your existing abilities, learn new skills and experience variety every day. So together, we can make a difference in the community we love.

**Ready to achieve your potential?**



**Talk to us to find out more.**

[sirona.recruitment@nhs.net](mailto:sirona.recruitment@nhs.net)

0300 124 5444

[www.sirona-cic.org.uk/work-with-us/sirona-care-health-south-glos/](http://www.sirona-cic.org.uk/work-with-us/sirona-care-health-south-glos/)

Service provided by



**BATHROOM & WET ROOM DESIGN & INSTALLATIONS**

**TILING • GENERAL PLUMBING • PLASTERING**

**BILLY COOK**

**WJC PLUMBING & TILING**

07748 085 920

[WJCPLUMBING@OUTLOOK.COM](mailto:WJCPLUMBING@OUTLOOK.COM)

• [FACEBOOK.COM/WJCPLUMBINGANDTILING](https://www.facebook.com/WJCPLUMBINGANDTILING)

• [INSTAGRAM.COM/WJCPLUMBINGANDTILING](https://www.instagram.com/WJCPLUMBINGANDTILING)

## The History of Olveston Court and Manor: 1600 to the Present Day

The huge interest in the recent film, 'Eric and Jean', and the snapping up of every copy of the accompanying book, 'For the Love of Olveston', shows there is a great appetite for discovering more about the history of Olveston.

By great good luck then, on 5th April, Brian Kemp will share more of his research into Olveston Court and Manor, picking the story up in 1600 and taking it to the present day. Brian's talk will cover the well-connected Lords of the Manor and the owners and occupants of the Court.

In his book 'The Court and Manor of Olveston', now sadly out of print, Brian gives his thanks to, among others, Eric Garrett of OPHS 'for his invaluable information, insights and historical documents'. Brian has done a colossal amount of research into archives himself, and the result is a detailed account, not just of the history of the building but also of the people connected with it over the centuries.

Included in the talk will be goldsmiths, the Stafford family, the Civil War, white slavery, a sensational trial, red setter breeding, and the building of Hollywood Tower. Court owners and occupants will include the Sturge Quakers, the Llewellyn brewers, and more recently the Taylors.

Brian will provide information about the Court in recent years. His book notes that the late and much-loved Arthur Robbins visited Olveston Court in the last year of his life. On that occasion, Arthur recalled that his first job was working in the back garden of the Court.

We look forward to welcoming you and any memories you have of the Court!

**Olveston Parish Historical Society**

**Wed. 5<sup>th</sup> April 7.30pm**

**Methodist Church, The Street,  
Olveston**

If you're not a member, pay on the door £3. Free teas, coffees and biscuits will be on offer before the talk starts at 7.30pm. Everyone welcome - open to all!







**GARDEN MACHINERY SPECIALISTS**  
**SALES, SERVICE AND SPARES**

E-MAIL: [themowerdoctor@hotmail.co.uk](mailto:themowerdoctor@hotmail.co.uk) WEBSITE: [www.themowerdoctor.net](http://www.themowerdoctor.net)  
ADDRESS: Unit 2-3 The Rearing Unit, Oldbury Lane, Oldbury-On Severn, BS35 1RF  
TELEPHONE: 01454 411 701






DEALERS FOR:











**PHYSIOTHERAPY**  
**CHIROPRACTIC**  
**PODIATRY**  
**CHIROPODY**

"Optimise your Health"

Please Enquire:

Tel: 01454 528608  
Email: [info@optimuscp.com](mailto:info@optimuscp.com)  
Web: [optimuscp.com](http://optimuscp.com)

11 The Plain, Thornbury, BS35 2AG

**OLDOWN**  
**TREE SURGEONS**

TREE SURGERY AND HEDGE MAINTENANCE

PROFESSIONAL. QUALIFIED. FULLY INSURED.

[www.oldowntrees.org](http://www.oldowntrees.org)

Antony Leicester 07800512408 [info@oldowntrees.org](mailto:info@oldowntrees.org)



**Computer support and solutions for the home and business user.**

- PC/laptop repairs
- Virus removal
- Wifi/broadband issues
- Sponsors of Olveston FC

**EC COMPUTERS**

How can we help? Tel: 01454 281 500 Web: [www.eccomputers.co.uk](http://www.eccomputers.co.uk)

IT Support/Repairs Office Equipment Print Solutions Telecoms Cyber Security Managed Services Software/Database applications



## Recycle Your Milk Bottle Tops

We are pleased to announce that Green Force will be trialling a new collection of milk bottle tops for recycling alongside our current collections of dental items and writing implements in the large brown box by the church porch. The plastic milk bottles go with the kerbside collection as usual. The new collection will be for milk bottle tops only of any colour, including the new clear ones. Please wash all tops. We must stress that this project is only for milk bottle tops and no other tops are accepted on this scheme.

We will be supporting the charity FoWSART – Friends of Water Search and Rescue Team. This is a voluntary team who support communities in the UK when it comes to flooding and water rescue. They do not receive any funding from the public sector and rely on kind donations. They have over 200 volunteers throughout the UK working on a call system 24/7, 365 days a year. The charity's purpose is:

*'to prevent and protect life and relieve the suffering and distress amongst persons endangered by flooding or natural hazards or to assist in water based rescue incidents or other emergency response situations through the provision of grants to assist in the operational or tactical support of any such incident'.* More information regarding the charity can be found on their website <https://fowsart.org.uk>.

We hope you will join us in supporting this worthy cause and at the same time join us in recycling a very common item used in most households. When we have filled several black bin liners, the collection will be taken to one of our nearest collection points in either Gloucester or Swindon (the journey will be tied up with other business commitments so as not to waste fuel). The milk bottle tops are then turned into pellets that go into the manufacture of items such as traffic bollards and traffic cones. The recycling firm that FoWSART work with (GHS Recycling Ltd) weigh the incoming tops and make a donation for a given weight to the charity.

Thank you once again for all your support with the collections we are currently running.



**www.manwithavan.info**  
Removals ✓ Clearances ✓ Deliveries ✓  
Scrap cars ✓ We're local ✓  
Call: 07742791139

Cheaper than a skip!

# YOUR PC GURU

COMPUTING FOR 'MERE' MORTALS

01454 616365

- Home visits
- Computer Repair
- Phone & Tablet setup
- Home Wireless & Broadband
- Smart Home Tech
- Complete Mac support

[www.yourpcguru.co.uk](http://www.yourpcguru.co.uk)  
Technology Advice & Repairs

## JC 4x4 Ltd SPECIALIST IN LANDROVER

SERVICE • REPAIR WORK • DIAGNOSTICS • MOTS • OTHER VEHICLES WELCOME

CALL JAMES: 01454 261067 / 07966 086447



### Free Quotes

Domestic	Radiant heating
Commercial	Boilers
Breakdowns/ call outs	Radiators
Servicing	Plumbing
Installations	
Warm air heating	LPG, natural gas, oil



[www.edgeheatingandplumbing.com](http://www.edgeheatingandplumbing.com) [info@edgeheatingandplumbing.com](mailto:info@edgeheatingandplumbing.com)

## St Peter's Hospice Shop

*A Volunteer*

I have been volunteering at the St Peter's Hospice charity shop in Thornbury for 15 years. I was persuaded to go along with two neighbours who had been there for a while. The Hospice is a local charity providing care and support to adults living with a life-limiting illness. Money raised from the shops helps towards the cost of running the Hospice.



There are various tasks to do at the shop. You could be helping to sort the donations, steaming the clothes before they are hung on the rails in the shop, arranging the displays or manning the till. The staff are very friendly and keep us supplied with tea or coffee and biscuits!

If anyone would like to volunteer, just call into the shop. You can do as many or as few hours as you would

like. There are several other worthwhile charity shops in Thornbury who would appreciate the offer of a few hours help from willing volunteers.

I have thoroughly enjoyed my time at the shop and hope to continue for a few more years.

## Seven Vale Flower Club

Our spring Open Meeting is on Monday 17<sup>th</sup> April on Olveston and Tockington Parish Hall. Doors open at 6.30pm for 7.30pm.

Our demonstrator for the evening will be Andrew Lloyd, who is no stranger to the club and is like family to some. Andrew is an amusing and entertaining demonstrator.

Friends and visitors are welcome. There will be the usual raffle and refreshments. For tickets and more information, please call: 01453 811089 or 01454 885213.

## April at Thornbury Library

### Easter Crafts

Wednesday 5<sup>th</sup> April 10.30 to 12 noon.

Lots of exciting things to create. Suitable for children aged 4-9 years.





## Yours Faithfully

Rev. Ann Lloyd

April is my favourite month of the year. It arrives when winter has ended and is commonly associated with spring. When he was living in Italy, the poet Robert Browning wrote 'O to be in England now that April's there'... focusing on his delight in the natural beauty of birdsong and trees bursting into leaf.

April might start with pranks, jokes and humour (read this edition of *Meeting Point* carefully or you may find yourself cleverly fooled) but it has a serious side too. It is a month of transition which symbolises a period of renewal and promise as gardens burst into blossom, lawns need regular cutting, winter coats can be cast aside, and, as the days grow longer, spirits are raised. We also have Easter to celebrate with the promise of a long weekend.

Olveston Stores has been well-stocked for some time with chocolate bunnies wrapped in gold foil, (ranging in size from my little finger to that of my head), as well as a variety of equally tempting chocolate eggs. So, what do eggs and bunnies have to do with Easter?

Many of the Easter customs we enjoy today stem from the biblical Easter story. Hot cross buns, traditionally eaten on Good Friday, carry the symbolism of the cross on which Jesus died. The spices inside the bun represent the spices used on his body when he was placed in his tomb. The chocolate egg represents the stone that was rolled away from the tomb where Jesus was buried. And the traditional hollow inside of the egg represents his tomb being empty – as he had risen back to life. The Easter Bunny is a bit like Santa Claus. It has no religious significance but has its origin in an Anglo-Saxon myth about a goddess of fertility whose symbol was a hare which fitted with both spring and new life.

Easter is the most important day of the church year because of the significance of Jesus' crucifixion and resurrection, the events upon which Christianity is based. Because of commercialization some churches prefer to call it "Resurrection Sunday." St. Paul says that without the resurrection of Christ our faith is futile. Whether we call it "Easter" or "Resurrection Sunday," what is important is the reason for our celebration, which is that Christ is alive, making it possible for us to have eternal life!



MEMORIALS &  
MONUMENTS



Supplied & Erected  
NEIL VIZARD  
01454 419108

**BAMFIELD**  
TREE SERVICES  
TREE SURGERY AND LOGS

www.bamfieldtreeservices.co.uk  
07761 810483

**prestige**  
event equipment hire

Supplying you with the best equipment to succeed!  
CELEBRATIONS & CORPORATE EVENTS

CUTLERY, CHINA, GLASSWARE, LINEN, REFRIGERATION,  
COOKING EQUIPMENT, BARBEQUES, FURNITURE & MORE

Fast and Efficient, we stock a wide variety of  
equipment covering anything from  
WEDDINGS to FESTIVALS.

For a FREE quote please call: 01179613170  
info@prestigecateringhire.co.uk  
www.prestigecatering.co.uk

**'Indawes  
- Outdawes'**

Decorating and  
Home Improvements

Painting | Wall Papering  
Floor Laying

**Martin Dawes 07720 509653**  
martin.dawes@live.com

**Window Cleaning**

**07976 694744 - 0117 9085794**



**M. Gray Window Cleaning**

Family run business for over 25 years  
experience working in the Almondsbury,  
Olveston, Aust areas - and nearby.

Email: mgwc1@hotmail.com

## Church News

### ST MARY the VIRGIN, OLVESTON

April 2	10am 6pm	Palm Sunday, Holy Communion Evensong	Rev David Moss Rev David Bone
April 9	10am 6pm	Easter Day Holy Communion No evening service	Rev David Bone
April 16	10am 6pm	Morning Prayer Holy Communion	Janet McBride Rev David Moss
April 23	10am 6pm	Holy Communion Evening Prayer	Rev Ann Lloyd Fran Brealey
April 30	10am 6pm	Holy Communion Taizé	Rev David Moss Rev David Bone

Every Saturday in Term Time, 'REFRESH', 4.30-5.30 - Fun, relaxed church for families, all welcome.

Every Wednesday, Holy Communion, 10am. NB. Clergy may change.

**Contact:** Rev David Moss, 01454 415190; email: mossds@gmail.com

### CHAPELRY OF ST JOHN, AUST

April 9	10am	Easter Day Holy Communion	Trevor Cook
April 23	10am	Holy Communion	Trevor Cook

**Contact:** Trevor Cook, 01454 618442

**Church Wardens:** Jenn Dickens 632312 and Clive Roberts 632238

**HOLIDAY LET 6 BERTH HOLIDAY HOME**  
(2 Bed, 1 Ensuite)






OTTERTON . BUDLEIGH SALTERTON . EX9 7BX

Central Heating . Double-Glazed  
Private Beach . Fishing Trips . Cliff Walks  
Restaurant . Bar . Live Entertainment  
Indoor Pool . Kids Club  
Shop . Cafe . Takeaway

**Tony Gardner**  
07889 727 729



**greenside**  
Landscaping

The Cottage, Hortham Lane,  
Almondsbury, Bristol BS32 4JP

Greenside Landscaping can offer a wide range of services including:

**Artificial Grass ~ Brick & Block Driveways  
Decking ~ Fencing & Gates  
Garden Design ~ Patios & Paths  
Planting ~ Ponds & Water Features  
Turving & Seeding ~ Walling**

*We pride ourselves on flexibility and we strive to meet our client's requirements and budgets.*

www.greenside-landscaping.co.uk  
Tel: 01594 841559 Mob: 07980 384321  
Email: paulbradburn@hotmail.com

**BE DLAM**  
www.bedlambeds.com

- Free local delivery
- Free assembly
- Free disposal of your bed

Divans / Mattresses / Ottoman & Wall beds /  
Memory foam & latex mattresses / Beds made  
to measure / Pine, Metal & leather beds

**Open Tuesday to Friday: 9am-5pm  
Saturday: 10am-3pm**

**Visit our showroom:** The Old Post Office  
26a Gloucester Road, Rudgeway, Bristol,  
BS35 3RY (by the speed camera)

**01454 617 277 or 07887 853479**

**MORAS**  
Decorating Services

**ANDREW MORAS**  
Quality Painting and Decorating Services

For your **FREE** no obligation quote contact Andrew:

**07962069036**

✉ andrew@morasdecorating.co.uk  
www.morasdecorating.co.uk

**Tavira**  
Algarve, Portugal  
3 Bed Apartment  
"can accommodate up to 8 people"

Modern 3-bedroom apartment in picturesque & historic Algarve town.  
2-bathrooms including one en-suite, 2-balconies & roof terrace.  
Fully furnished, sleeps 6-8. Easy walking to thriving town centre.  
Close to railway station, golf courses & beaches. 30 minutes drive from Faro. Ideal for families or golfers. Tel: 07889 727729  
Email: anthonyar@aol.com - www.aminpadtavira.co.uk

TAVIRA - EAST ALGARVE  
EASYJET & RYANAIR  
NOW FLYING TO FARO  
FROM BRISTOL

**Thornbury Stairlifts**  
SALES SERVICING & REPAIRS

• New & Re-conditioned Stairlifts & Warranty  
• Removals & Relocations  
• Free Surveys & Quotes  
– No Obligation  
• Rentals for Straight Stairs

Independent, Professional & Friendly Advice  
Over 24 years practical experience

**Independent Stairlift Specialist**  
**01454 413748 07833 318722**  
www.thornburystairlifts.co.uk

### ST MARY DE MALMESBURY, LITTLETON-ON-SEVERN

April 9	9am	Easter Day Holy Communion	Tracey Black
April 23	9am	Holy Communion	Rev David Bone

**Contacts:** Tracey Black 417660 and Tim Pyper 416422 /07802 419451

### ST JOHN THE EVANGELIST, ELBERTON

April 9	9am	Easter Day Holy Communion	Judith Heybyrne
April 23	9am	Holy Communion	Rev Ann Lloyd

**Contacts:** Judith Heybyrne 616725 and John Gunnery 413225

### OLVESTON AND TOCKINGTON METHODIST CHURCH

April 2	10am	Tock Ch	Morning Worship led by Rev Dr Simon Edwards
April 9	10am	Olv Ch	Easter Day Worship with Holy Communion led by Christine Jones
April 16	10am	Tock Ch	Local arrangement
April 23	10am	Olv Ch	Morning Worship led by Hannah Edwards
April 30	10am	Tock Ch	Morning Worship led by David Head

**Contact:** Rev Dr Simon Edwards 418176,  
simon.edwards@methodist.org.uk

### THE VINE House of Prayer, Pilning Street, Awkley BS35 4HL

Meeting at 11am every Sunday and on the 1st and 3<sup>rd</sup> Wednesdays of each month at 2.30pm.

**Contacts:** Mike and Barbara Matthews, tel. 07512 917229 or email:  
thevine\_awkley@hotmail.com

### THE OASIS CHURCH, OLD DOWN

Services at 6.30pm every Sunday. All are welcome.

**Contact:** Neil Mobbs, cnmobbs@hotmail.com

## AUST EVANGELICAL and LITTLETON EVANGELICAL CHURCHES

**Contact:** Danny Bamfield 01454 419324 e-mail danny@thebamfields.co.uk

## RC CHURCH OF CHRIST THE KING, Thornbury -

Mass on Sundays at 9.30 and 10.30am

**Contact:** 01454 412223, [www.ctk-thornbury.org.uk](http://www.ctk-thornbury.org.uk)

## SOCIETY OF FRIENDS (QUAKERS), Thornbury

**Contact:** Chris Willmore [chriswillmore@blueyonder.co.uk](mailto:chriswillmore@blueyonder.co.uk)

# Diary Dates for April

Information believed to be correct at going to press.

1 Sat	Thornbury Volunteers Centre Pop-Up Sale by charities plus coffee and cakes	10-12	TMH
3 Mon	Monday Movies	7.30	StM
4 Tues	Over 60's Coffee Morning Citizens Advice, every Tuesday Macular and Low Vision Group	10-12 10-12 10.30	DGCL TCC TMH
5 Wed	Table Tennis every Wednesday OPHS: History of Olveston Court, Brian Kemp	7pm 7.30	PH OMC
6 Thurs	Thornbury Farmers' Market Coffee Shop 'Good Afternoon Choir', every week	9.30 9-12 1-3	StM URC
7 Fri	Good Friday		
8 Sat	Coffee Morning at Olveston Methodist Hall	10.30	OMH
10 Mon	Men's Walk and Chat group, Tock Green Cream Teas on Tockington Green Open Garden Stoneleigh Down Tockington	9.30 2pm 1 - 5	
11 Tues	Over 60's Coffee Morning Thornbury Memory Café WI Aust Parish Council	10-12 10.15 7.30 7.30	DGCL TMH PH EVH
12 Wed	'Eric and Jean - The Movie'	3pm	PH
13 Thur	Coffee Shop	9-12	StM
14 Fri	Tea and Chat	2.30	OC

18 Tues	Thornbury Memory Cafe	10.15	TMH
19 Wed	Alveston Historical Soc. History of	7.30	AMC
20 Thurs	Coffee Shop Thornbury Farmers' Market Olveston Annual Parish Assembly	9-12 9.30 7pm	StM OPH
21 Fri	Haven Memory Cafe	10.15	URC
22 Sat	Coffee Morning at Olveston Methodist Hall Musical Drama, Elgar by Michael Lunts (AAG)	09.30 7.30	OMH URC
23 Sun	Village Brocante	11-4	LOSVH
24 Mon	Men's Walk and Chat group. Meet Tock Gn	9.30	
25 Tues	Over 60's Coffee Morning	10-12	DGCL
27 Thurs	Coffee Shop	9-12	StM

KEY: **AMC** - Alveston Methodist Church, **AMH** - Alveston Methodist Hall, **CS** - Castle School, **CTK** - Christ the King, **DGCL** - Daldry Gardens Community Lounge, **EVH** - Elberton Village Hall, **OMC** - Olveston Methodist Church, **OMH** - Olveston Methodist Hall, **OPH** - Olveston Parish Hall, **QAMP** - Queen Alexandra memorial Pavilion, Old Down, **StM** - St Mary's Church, **SMCH** - St Mary Church Hall Thornbury, **TCC** - Turnberries, **TMC** - Tockington Methodist Church, **TMH** - Thornbury Methodist Church Hall, **URC** - United Reform Church **LOSVH** - Littleton on Severn Village Hall **OC** - Oasis Church Old Down

## Looking Forward to May

**Friday 5<sup>th</sup>** Community Café 9-11.30 **TMC**

**Friday 5<sup>th</sup>** Coronation Coffee Morning 10.30 - 12 **LOSVH**

**Saturday 6<sup>th</sup>** Coronation Day

**Contact details** for any clubs or organisations in the Meeting Point area can be found in the Meeting Point Directory on the community website: [www.olvostonandaust.com](http://www.olvostonandaust.com). If you would like to update your organisation's details, please email: [meetingpointsecretary@olvostonandaust.com](mailto:meetingpointsecretary@olvostonandaust.com)

**Advertisements** Neither Meeting Point, its editor, nor management committee accept any responsibility or give any guarantee in case of any dispute or claim as to quality, condition or delivery of commodities or services advertised in this magazine. It is not to be taken that publication implies recommendation. It is always advisable to check prices when ordering goods or services.

**Views** expressed by contributors are not necessarily those of the editor or Meeting Point magazine  
**Copyright Meeting Point 2023.** Copyright remains with the author(s) and Meeting Point. No part of this publication may be reproduced or transmitted in any form without the prior permission of the copyright owners.

Meeting Point is printed by Motion Printing Ltd.





## OLVESTON STORES & POST OFFICE

NOW STOCKING - JON THORNER'S FULL RANGE

NEW COSTA EXPRESS MACHINE IN STORE

HOME DELIVERIES (NO MINIMUM SPEND)

NEWSPAPERS DELIVERED (SMALL CHARGE)

PAYZONE FACILITY FOR BILL PAYMENTS, GAS, AND ELECTRIC TOP UPS

OUR INSTORE POST OFFICE OFFERS A WIDE RANGE OF SERVICES

CAR TAX  
BILL PAYMENTS  
CURRENCY ORDERS  
POSTAGE  
A RANGE OF INSURANCES  
&  
MUCH MORE

01454 612269

[olvestonstores@btconnect.com](mailto:olvestonstores@btconnect.com)

## BONDS *of* THORNBURY

INDEPENDENT ESTATE AGENTS



A truly local independent estate agency with over 40 years of experience and with unrivalled knowledge of the property market within Thornbury and South Gloucestershire.

Our caring sales business is based on our reputation, honesty and integrity.

Please contact: Rowena Moncrieffe  
for further details...

14 The Plain, Thornbury

Tel No: 01454 858007

[www.bondsofthornbury.co.uk](http://www.bondsofthornbury.co.uk)

[enquiries@bondsofthornbury.co.uk](mailto:enquiries@bondsofthornbury.co.uk)

