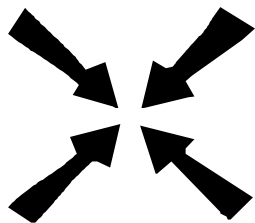


# Meeting Point



August 2016



# Meeting Point

**Volume 40, Number 11, August 2016**

---

The community magazine for the villages of Olveston, Tockington, Old Down, Lower Hazel, Awkley, Ingst, Aust, Elberton and Littleton upon Severn

---

## **EDITOR:**

**Chris Bolton**  
The Old Meeting House  
The Green, Olveston  
Bristol BS35 4EJ  
Tel: 01454 610056  
*meetingpointeditor@gmail.com*

## **ASSISTANT EDITOR:**

**Angela Williams**  
Ashlea  
Haw Lane  
Olveston  
Bristol BS35 4EG  
Tel 01454 612850  
*meetingpointmagazine@gmail.com*

## **ADVERTISING:**

**Nigel Dawes**  
Cromwell House  
The Street,  
Olveston  
Bristol BS35 4DR  
Tel: 01454 201558  
*julie.dawes@tiscali.co.uk*

Publication date  
*1st of each month*

Material for September 2016  
to the Editor or Deputy Editor  
by 8<sup>th</sup> August 2016.

## **From the Editor**

Well, here we are, in full colour, as promised!

Many of the articles this month are enlivened by pictures in colour, and a good number of our advertisers have already taken advantage of the chance to have a more striking ad. I'm sure there will be more developments as we exploit the new opportunities. Meanwhile I hope you approve of progress so far.

I am delighted to begin with a very colourful profile of a much-loved resident whom many readers will know well. And this month we have a piece from Joyce Davies, who edited Meeting Point during its second decade. Certainly from my vantage point, sitting here putting everything together on my computer, it is clear that the way editions are put together has changed radically. But the material we carry still originates from all points of the compass within our wonderful community, and this is a constant, even if the actual production methods have now moved on.

The photo on this month's cover was taken at the Street Party held on Orchard Rise, Olveston to celebrate the Queen's 90<sup>th</sup> birthday.

Meeting Point Founded in 1976 by the Anglican and Methodist churches in Olveston, near Bristol

**Meeting Point magazine and Meeting Point Directory are online at the Community Website: [www.olvostonandaust.com](http://www.olvostonandaust.com)**

# Kenny Neale - 'Smiley Ken'

*Profile by Cath Purchase*

Since moving to Tockington village in 1997 Kenny has always been a part of our lives. For everyone who passed 'Kenny's corner' opposite our house, Kenny was there with a smile and a wave to cheer you up, rain or shine. When my children walked to pre-school he was there for a chat, and greeted them before school when they walked to the bus stop (and told them when they'd missed the bus...). He was our 'burglar alarm', letting us know who had called and remembering to put our bins out when we forgot!



After some time in hospital, Kenny moved into Alexandra Way in Thornbury last year and the village is not the same without him. He is enjoying his time, discovering his talents as an artist (as in the painting on the next page) and taking an active part in the regular quiz nights and entertainment. He loves having visitors and has made lots of friends. Ken was happy to tell me about his background and for me to share it, as he loves Meeting Point. (I hope you like reading it, Ken.)

Kenneth Sidney Joseph Neale was born to Elsie Wilkins and Joseph Neale on 24<sup>th</sup> December 1932. His first family home was in 'Chelwood' in Alveston, past Marlwood School. Shortly afterwards he moved to Pilning, where his father bought Torrs Farm. Sadly, Joseph and Elsie separated not long afterwards and Elsie and Kenny came to Tockington when he was 6 and lived in 'Rose Cottage' in Tockington, with Elsie's father Sidney Wilkins.

Kenny's grandfather Sidney was a blacksmith in Olveston. Sindrey's Blacksmiths was situated in the old newsagents on the corner before the Stores and Ken remembers his grandfather charging 6d a foot for a cart horse and 2 shillings for 4. In 1885 his grandad witnessed the famous whale beached at Littleton Pill, which then became known as Whale Wharf.

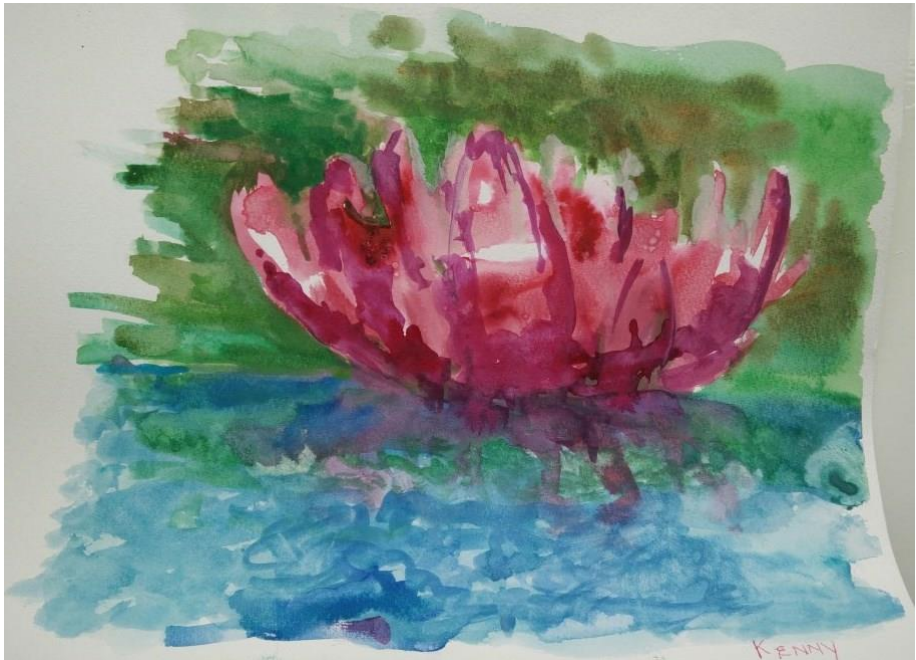
Aged 6, Kenny attended the local school at the top of Old Down Hill, where he was taught by Mrs Dunell who everyone just called 'Governess'. The school is now a house, on the right before the scout hut. At 8 he joined Olveston School.

Kenny was an active child who loved being outdoors. He tells stories of always climbing to the top of the original elm tree on the Green, and picking apples from Hardy Orchard, on the corner of Hardy Lane, and filling his shirt full. He

loved travelling to and fro on the Aust Ferries - the Severn King, Severn Queen and Severn Princess - for 2 shillings. He left school before he was 14 and worked for Arthur Wilkins for a couple of years at Woodhouse Farm. After this, when 16 he worked in the gardens at Tockington Manor.

In 1945, Kenny and Elsie moved into Cross House with his grandfather. The house then extended into what is now 'Innisfree' next door. Originally the four houses had been a Coaching House, since 1660. Sidney died in 1948 and Kenny remained at home to look after his mum. Elsie went out one morning in 1966 to get ice creams from Tockington Garage and suffered a heart attack which she didn't recover from. Kenny sold 'Innisfree' to Katie Towells and moved into the Cross House where he continued to live until 2015.

Kenny has spent years cycling, gardening for many local people and being a local celebrity. He had his own Facebook page set up by children at Marlwood School and was on the front cover of the South Glos cycling magazine. Kenny loves visitors, so if you miss him like we do and are passing Alexandra Way, I'm sure he'd love you to pop in for a chat.



*One of Kenny's paintings*

## **Fennella Tait: Correction**

The Editor regrets that we misspelt Fennella Tait's name throughout the interesting profile of her which we printed last month. Sorry, Fennella!



# Orchard Rise Street Party

*Amanda Seevaratnam*

Well who would have thought it? Against all odds, and certainly against the advice of the weather man, the residents of Orchard Rise went ahead with their Street Celebration for the Queens 90<sup>th</sup> birthday; and oh what a party!!



A good old fashioned line of tables and chairs down the middle of the road between Laxton Close and Bramley Close gave more than enough room for everyone to join in, with plenty of room at each end for children to play on bikes and scooters or just run around safely. It was a great afternoon for meeting new friends and catching up with old ones. The Union Jack was recreated in fairy cakes that everyone brought along, and they were served



with a good old fashioned cuppa thanks to the school lending us their tea urn.

Huge thanks to the Crusty Loaf and Powells the Butchers for supplying the rolls, sausages and burgers at greatly reduced prices, and to Mark, George and Peter for cooking them all. Donations towards the cost of the event were received from the Parish Council and many residents, and more on the day from those who came along. We have £75 leftover which will be donated to 'ICAN' and the 'Campaign to Protect Rural England', both of which are charities supported by Her Majesty. Thanks also go to 'Ride the Edge' who got everyone up and dancing, and their guest artiste John Hodges who, at the grand age of 88, still plays a wicked harmonica!!



## Old Down Cricket Club

*Tony Gardner 07889 727729*

### 150 Club Winners July 2016:

|            |                      |
|------------|----------------------|
| <b>£50</b> | <b>Audrey Evans</b>  |
| <b>£15</b> | <b>Andy Phillips</b> |
| <b>£5</b>  | <b>Jon Pullin</b>    |

### Latest £25 Bonus Ball Winners:

|                 |                          |
|-----------------|--------------------------|
| <b>11/06/16</b> | <b>Malcolm Grosvenor</b> |
| <b>18/06/16</b> | <b>Bhavin Radia</b>      |
| <b>02/07/16</b> | <b>John Welsher</b>      |
| <b>09/07/16</b> | <b>Ian Maunder</b>       |

### Home Fixtures in August (1.30 Start):

|                 |                                     |
|-----------------|-------------------------------------|
| <b>06/08/16</b> | <b>2nd XI v Churchways</b>          |
| <b>13/08/16</b> | <b>1st XI v Winterbourne</b>        |
| <b>20/08/16</b> | <b>2nd XI v Frenchay (1.00pm)</b>   |
| <b>27/08/16</b> | <b>1st XI v Nailsea (1.00pm)</b>    |
| <b>03/09/16</b> | <b>2nd XI v Bedminster (1.00pm)</b> |

Everyone welcome to attend.

**Up the Down!!**

# Aust Parish Council Matters

*Tim Pyper (austparishcouncil@googlemail.com)*

## **Broadband Provision**

The council is continuing to push for better service for Elberton and Littleton. It is unfortunate that the target is to get 95% of premises up to speeds of 24Mb/s, when many of us would welcome as little as 3 or 5Mb/s. We are continuing to press the case, but it's a Sisyphian task.

## **Whale Wharf**

The owner of Whale Wharf has given notice of an intention to change the use of the five buildings at Whale Wharf from office or storage to residential, to create 30 accommodation units. Aust Parish Council has written opposing the proposal, mainly on the grounds that the site poses serious flood risks, but also urging South Gloucestershire council to check very carefully whether the conditions for the notification procedure are in fact satisfied. At the time of writing this article, the council hasn't made a decision. However, the Environment Agency has also objected on flood risk grounds.

## **Elberton Phone Box**

The service to this box was disconnected some time ago, and some grumbles have been heard that it is getting into a poor state. BT will sell redundant boxes for £1 to communities and many have found novel uses for them. Aust's phone box now houses a defibrillator, others are used as book exchanges or collection points for food banks. Is there any wish in Elberton to find a use for your phone box? Or is there a need to get BT to reconnect it? Let me or your Councillors know.

## **From the Registers of St John the Evangelist Elberton**

April 22<sup>nd</sup>: Wedding of Philip Edward Hallett and Tanya Louise Endres.

May 27<sup>th</sup>: Burial of Ashes, Herbert Nigel Raban.

## **From the Registers of St Mary's Olveston**

June 27<sup>th</sup>: Funeral service at Mary's, followed by cremation, of Janet Elaine Rugman.

June 30<sup>th</sup>: Cremation, followed by Thanksgiving service at St Mary's. of Margaret Alice Harding.

July 5<sup>th</sup>: Funeral service at St Mary's, followed by burial at Shirehampton, of Geoff Wigmore.

# Oveston Parish Matters

Richard Rogers  
([clerk@olvestonparishcouncil.gov.uk](mailto:clerk@olvestonparishcouncil.gov.uk))



National Statistics for rural villages indicate an average 1.74 cars per household. 27.3million cars are owned in England & Wales (2011 Consensus), yet in 1955 there were only 3 million cars registered in Britain. Each house in Orchard Rise and the associated Closes were built shortly after with an off road parking space and a garage. In recent years Planning Officials have tried to promote the use of public transport rather than facilitate off road parking for new houses. Vibrant local businesses attract further traffic into the village, and others park in the Parish for recreation/ car sharing.

At the same time cars have ceased to be cared-for luxuries, garages are now utilised for storage and accommodation, and some off-road parking areas have been absorbed into gardens. It is little wonder, therefore, that we have parking issues around Old Down, Oveston and Tockington.

The problems are compounded by where people park, blocking junctions, creating blind spots and putting pedestrians at risk. Narrow roads and the bus routes are blocked so that emergency vehicles can't get through. At road junctions such as the North East corner of Tockington Green, and the bottom of Orchard Rise, parked cars are forcing drivers along the wrong side of the road, creating blind spots and greatly increasing the risk of an accident. Many drivers (including residents) do not think about the consequences and are driving too quickly along The Street and Upper Tockington Road.

Oveston Parish Steering Group has tasked a subgroup with looking at Parking and Traffic issues and to come up with ideas and recommendations. This subgroup is due to report shortly, and over the next few months the Parish Council will publish this report, and give serious consideration as to what it can achieve and the anticipated timescales.

The reality probably is that we have to manage the situation ourselves, and **consider** others. Why not make better use of your own parking spaces to minimise on-road parking; accept that you may have to walk further to your vehicle and park it so that it doesn't block the road or create dangerous blind spots close to road junctions; and, even accept the concept that everyone has an equal right to park on-road, and try not to get concerned if it is in front of your house.

On the subject of consideration, please could **Horse Riders** stop using the pavements and the footpath from Old Down to Alveston – either use the road or the grass where 'dung' doesn't cause problems.



# Meeting Point's Second Decade

*By Joyce Davies, Editor 1991 to 1993*

They say 'You can't judge a book or magazine by its cover.' Meeting Point has always displayed colourful stimulating covers and the contents have lived up to their promise. Local artists included John Crossley, Kate Hickman, Elaine Thomas and Rosemary Wilson, and there have been many drawings from children in the Village School.



In the autumn of 1990, newly retired from Teaching, I was approached by Trevor Anderson, the then Editor of Meeting Point, who was needing an Assistant Editor who would subsequently take over from him. I did my first solo edition in January 1991, and my final one in March 1993.

At that time, Meeting Point was not computerised in any way, because computers were not in general use. Most items, which were varied in nature, came hand-written, and were typed by Elaine Groom (now Marsh) ready for the printers. After the typing stage, Freddie Pitts and his team would cut and paste the articles to produce print-ready pages. At that stage there were 32 pages, compared to today's 48, and I generally found that I had too many potential contributions, rather than too few, so it was often the case that some contributors were disappointed.

In October 1991 we celebrated MP's 15<sup>th</sup> Birthday, and past editors submitted copy – now we are celebrating 40 years, and I can't think where 25 years have gone.

Looking through past copies of my Editorial time, I am reminded of events which were a part of village life at that time – 'Motorama', the 'Fork Supper', the FOOS Annual Fun Run, and the Parish Players in its original format, with Freddie Pitts and Co bringing laughter and topical jokes and songs to local people.

Monthly items always included 'The Garden Line' by Cecilie Turton, walks described by Ron Hawkins, the Footpath Warden, and of course up-to-date programmes for all the many organisations locally. There were always

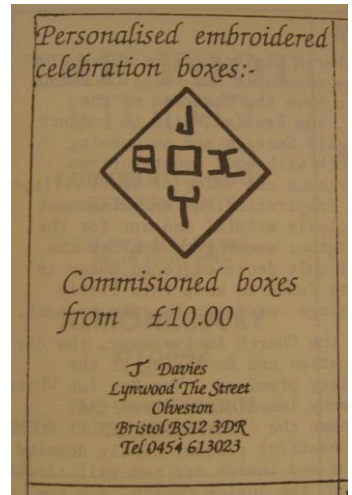
surprising items in the April Editions, when one wondered if perhaps readers were the victim of an April Fool Hoax.

There were a couple of interesting long-term series, one from Ian Lyons in the form of a travelogue describing his lengthy trip to many exotic foreign places, and the other from Bill and Betty Morgan in 'Letters from Virginia'.

Street Lighting, and the chaos of Gas coming to the villages were much discussed, and during this time Anita Thorne was installed as the first woman Priest in Charge at St. Mary's and Aust. Also, the new Walker Organ was installed at St. Mary's – and a wonderful demonstration of the many and varied qualities of this beautiful instrument was given by Gillian Weir on June 5<sup>th</sup> 1991, to great applause and four encores.

As well as the well-kept records of the Historical Society, I think Meeting Point will give a true picture of life in the villages from 1976, in the volumes which are kept and bound for readers of the future.

Life-After-Meeting-Point for me was making padded boxes for celebrations and jewellery (see the advert which MP carried regularly for my services). I made over a thousand before moving on to another project.



## Litter Pick

Please meet at the Parish Hall car park at 1pm on Saturday 6 August.

## Olveston Toddlers

Monica Galpin

'Olveston Toddlers' has been meeting every week at the Methodist Church Hall in Olveston for many years. Due to many of our children moving on to school and a lack of younger newcomers we are closing at the end of this school term. We would like to thank The Methodists for letting us use their hall and everyone who has helped to run it over the years. Should anyone wish to restart it in the future all the toys will be left at the hall.

# News from St Mary's

*Roly Bain*

## **The Kebab Quiz**

Our next quiz is on August 13th at 7.30pm, and this time we're serving kebabs - the sort you have in pitta bread not on skewers! You need to book early if you want a table - we can't accept people on the door. It's a maximum of 6 to a team. Contact Roly on 616593 or [roly@rolybain.co.uk](mailto:roly@rolybain.co.uk).



## **Olveston Fete**

Thank you to all those who contributed in any way, or simply came to the Fete. It was a very good day, well blessed by the weather - the heavens only opened once we started clearing up! A profit of £3272 was made, shared between the church and the Friends of Olveston School, and given the commitments parents had that week with other school activities, that's a very good total indeed.

## **Outdoor Service**

This is the third time we're having an outdoor service in Dawes Yard opposite Olveston Stores, but this time we're avoiding the bank holiday weekend and having it on Sept 4th. It's at 10am, and if you can bring your own chair, you're more likely to get a seat!

## **Movies Galore**

As ever in the school holidays, we're showing childrens' movies on Monday mornings at 10am, apart from the Bank Holiday weekend. If anyone would like to join the team that run them, please tell Roly or Jo Baxter. And the usual Monday Movies in the evenings continue on the first and third Mondays of the month at 7.30pm.

## **Denis Jones**

Denis has been a stalwart of St Mary's since he and Brenda moved from Almondsbury some years ago. A wise counsellor, fine preacher, and innovative thinker with a pastoral heart, an eye for worship and an ear for music (he plays the organ too!) he has been invaluable as a lay minister. But all good things must come to an end. Now in his eighties, he feels it is time to retire at last, so his last official service will be on Sept 11th at 10am. Do come and join us in thanksgiving.

## **My apologies**

I got it wrong. Clare Sandler came to talk about her Jewish faith on July 25th at Olveston Methodist Hall not Tockington as I suggested in last month's issue. My fault entirely. I hope no-one was misled.

# Classics and Jazz

Saturday September 3<sup>rd</sup>

*Phil Savage*

We are pleased to announce a concert of Classical and Jazz music to be given at **St. Marys Church, Olveston, on Saturday September 3rd at 7.30pm by The Trio Di Brio and The Park Row Five.**



They are led by our hugely talented local Olveston musician and artist Ray Loadman with friends from Falfield, Rockhampton and Bristol. They are all members of The Bristol Savages (no relation) and their playing is well known both locally and in and around Bristol.

Tickets at £6.00 will be available from The Village Stores in Olveston, from Ray himself on 01454 617009, from Phil Savage on 01454 616370, and from June Robbins on 01454 617491.

Takings will be shared between the Church and a Charity to be nominated by the musicians. We look forward to seeing you for what will hopefully be a perfect way to enjoy a balmy late summer evening.

## Friends of St. Mary's

The prize winners in the July draw, held on 6th July 2016 at the Friends' Committee Meeting were:-

| <u>Amount</u> | <u>Number</u> | <u>Name</u>               |
|---------------|---------------|---------------------------|
| £150          | 212           | Mr J Mason, Tockington    |
| £75           | 592           | Miss J Davies, Olveston   |
| £25           | 513           | Mrs M Bailey, Lower Hazel |
| £25           | 245           | Mrs C K Hickman, Olveston |
| £25           | 307           | Mrs B Morgan, Tockington  |
| £20           | 598           | Mr P Haworth, Olveston    |
| £20           | 172           | Mr A Clarke, Olveston     |
| £20           | 495           | Mr G Browning, Olveston   |
| £10           | 214           | Mr J Hahn, Olveston       |
| £10           | 500           | Mrs P King, Olveston      |
| £10           | 456           | Mr B Toft, Olveston       |
| £10           | 533           | Mr M Stevenson, Awkley    |
| £10           | 292           | Mrs I Phillips, Olveston  |
| £10           | 479           | Mrs S Farr, Olveston      |

If you are not yet a member and wish to join the lottery please telephone Andy Phillips on 01454 614890.

# Tennis Club Development, Tockington

*Claire Hawkins*



Having a garden shed as our clubhouse was never ideal, but that is now history. We are pleased to announce that our purpose built clubhouse is under construction. Designed by Olveston and Tockington Tennis Club (OTTC) Trustee and architect Ray Lambe, it will be a step change in the development of the club. Work on the clubhouse will continue until around the end of October but the courts will remain open.

Funding for the project has been secured from Sport England, South Gloucestershire Council, life memberships, generous donations from past and present members, fundraising events and club funds. Thank you to all those in the local villages who have supported us.

If you would like to find out more about how you can join look at our website [www.otctennis.co.uk](http://www.otctennis.co.uk) or email our membership secretary at [martin.dawes@live.com](mailto:martin.dawes@live.com). For those new to the village, the club is behind the Olveston Parish Hall in Tockington, which you can see in the background of the picture.

## A Thank You

*from Rose Brown*

The Royal British Legion would like to thank all those who came to the Concert on June 4th at St Mary's and all those who sponsored the raffle prizes. We raised £302 for the Poppy Appeal.



# Thornbury Rotary Club - Youth Speaks Competition

Thornbury Rotary Club's Youth Speaks competition is now in its 20<sup>th</sup> year. Each year all the junior schools in the Thornbury area are invited to participate in a speaking competition for years 5 and 6. Finals of up to 10 children are held in each school and the winner proceeds to the Grand Final. To date nearly 2000 children have participated in the school finals.

This year's Grand Final was held on Monday 4 July in the Olveston Parish Hall in front of a large audience of family, friends and teachers. The judges were Richard Hiscock (President of Thornbury Rotary), Anne Bradley (President of Inner Wheel), and Helen Harrison (Mayor of Thornbury). Judges and audience alike were impressed by the high standard of the 9 presentations and the confidence of the speakers.



The winner was Emily Ridewood from Christ the King and her subject was 'The Olympics'. Second place went to Michael Somper from St Peters who talked about '90 Years of Change', and third place to Isabelle Preston from Tockington Manor whose subject was 'Pollution'.

The picture shows the finalists. Emily is holding the Ron Nicholas Cup, and Freddie Peacock of Olveston School is just by Emily's left shoulder.

# Movies at St Mary's: August Trevor Anderson



Congratulations to the Meeting Point team in producing the **first-ever, full-colour** edition of the magazine. As a way of contributing to the celebrations, here is an image from the world's **first-ever, full-colour** movie, 'CUPID ANGLING', made in 1918. However, colour film was very expensive to produce and so it was rarely used again until a few decades later – with films such as 'The Wizard Of Oz'

in 1939. In that film, the sudden transition from black and white to colour when Dorothy lands in Oz was the thrilling moment when Technicolor was introduced to theatrical audiences. **Will the new all-colour Meeting Point have the same effect on its readers, we wonder?!**



Back to the present. Our **August** programme at **St Mary's Olveston** features SIX films, four on Monday mornings for 'children of all ages', and two on Monday evenings for 'the grown-ups':

## **MONDAY MOVIES** *(Recent releases & ever-popular classics)*

**Mon 1<sup>st</sup> August at 7.30pm:** Award winning Cold War drama in which a US lawyer is recruited to defend a Soviet spy and help the CIA to rescue a missing pilot. Stars Tom Hanks and Mark Rylance. *(2015, Cert 12)*

## **MONDAY MOVIES EXTRA** *('Non-mainstream' films and historic classics)*

**Mon 15<sup>th</sup> August at 7.30pm:** An exhilarating ride and a feel-good yarn about a Mumbai street kid who is just one question away from winning a staggering 20 million rupees on India's 'Who Wants To Be A Millionaire?' Not really in the 'Movie Extra' category, it's a film that's been requested so many times that we decided we must squeeze it in! *(2013, Cert PG)*

## **CHILDREN'S MOVIE CLUB** *(Monday mornings at 10.00am in the hols)*

**Mon 1<sup>st</sup> Aug:** An animated feature about a group of creatures who are left behind when Noah's ark sails without them. *(2015, Cert U)*

**Mon 8<sup>th</sup> Aug:** "Toy Story" goes Shakespearean in this animated retelling of the tale of the star-crossed lovers of Verona. *(2009, Cert U)*

**Mon 15<sup>th</sup> Aug:** An animated film about a pet chameleon who stumbles upon a small Wild West town after getting lost in the Mojave Desert. *(2011, Cert PG)*

**Mon 22<sup>nd</sup> Aug:** The new Disney version of the fairy story about a poor young woman who leaves her glass slipper behind at the Royal ball. *(2015, Cert U)*

**Everyone welcome to all the shows.** Refreshments available and FREE admission, although a small **donation** towards expenses is always appreciated. Contact me at [trevoranderson@btinternet.com](mailto:trevoranderson@btinternet.com) if you wish to know more.

# Hearing loop survey in Thornbury

Members of the Rotary Club of Thornbury carried out a survey during February and March of hearing loops available in the town. This exercise followed similar activity being carried out in Swindon by another Rotary club and a previous exercise in Eastbourne by "Hearing Link" (a national charity). The purpose of the survey was to identify and encourage installations that operate to the benefit of those with hearing aids.

People with hearing aids can have a problem hearing accurately or understanding speech, particularly in the presence of other noise. This is because the aids, while amplifying the sound, do not compensate for the reduction in discrimination that also occurs with deafness. A hearing loop provides an additional signal, detected by t-coils in hearing aids, which greatly assists the understanding of speech.

As well as encouraging managers of facilities and business premises to consider installing loops, a leaflet has been produced to make hearing aid users aware of where useful loops are. This leaflet is now available generally in the town, at the town hall, library, hearing aid dispensers and other premises. Clear advertising of the availability of a hearing loop is a great benefit to otherwise reticent hearing aid users, of which there are many!

This survey has been carried out very much as a one-time activity. Any information on new loops or other observations can be advised to the Rotary Club by email to: [hearingloops@thornburyrotary.org](mailto:hearingloops@thornburyrotary.org) or text to 07902291401.

Further information and a copy of the leaflet can be obtained on the Rotary Website [www.thornburyrotary.org](http://www.thornburyrotary.org).

**Alveston Singers** thank all of you who attended our concerts in June and helped us to raise just over £620 for this year's nominated charities: **Meningitis NOW** and **BRACE**.

We hope to welcome you to our Christmas concerts which will be held on Tuesday 13 and Saturday 17 December 2016. So please make a note in your diary and look out for more details nearer December.

# Thornbury Castle Grounds

A Museum-led Summer Walk, Wednesday 24 August, 6.30pm



You are invited to join an evening walk, going around the exterior of Thornbury Castle's walls and looking inside the courtyard and the gardens of this Tudor castle. You'll learn about the history of the site, not just the castle but what came before it.

We start outside St. Mary's Church at 6.30pm and the walk will take one and a half to two hours. Suitable for wheelchair users. Guide dogs only, please.

**Tickets cost £3** for adults (free for accompanied children of 10 and over) and should be **booked in advance** from the Museum.

Museum opening times are Tuesday to Friday 1-4pm, Saturday 10am-4pm.

Tel: 01454 857774 or email: [enquiries@thornburymuseum.org.uk](mailto:enquiries@thornburymuseum.org.uk)

[www.thornburymuseum.org.uk](http://www.thornburymuseum.org.uk).

## A Thank You

Thank you to those people who voluntarily took Isabel Geissinger to BRI Oncology for her Radiotherapy treatment.

Because of your kindness we are able to give £140 to be shared between the Macmillan Trust and Oncology £2 million LINAC Radiotherapy machine appeal. This will help other cancer sufferers in the future.

See Appeal Brochure:-

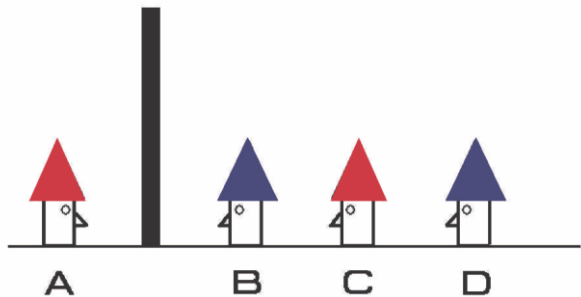
<http://www.friendsbhoc.org.uk/linac-appeal-brochure.pdf>

Thanks, from Ludwig and Isabel

# Jan's August Puzzle

Jan Winter

4 people are sitting as in the picture. They cannot turn round and cannot see through the wall between person A and B. So C can see only B while D can see both B and C. They do not know what colour their own hat is.



They are told that between them they are wearing 2 red hats and 2 blue hats. After a minute, one of them says, "I know what colour my hat is!"

Who is it and how do they know?

## Last month's solution (handshakes at the meeting):

There are 10 people at the meeting. If there were two people, there would be only one handshake. A third person would add two more handshakes as he shakes hands with the original two. A fourth person adds three more as she shakes hands with the original three, and so on.

So the sequence of totals is made by adding on the next whole number each time:  $1+2+3+4+5+6+7+8+9 = 45$  so there are 10 people.

A practical solution involving nails (=people) and bits of string (=handshakes) has been suggested by one solver!

## Local MP's Offices move

The local constituency office of our MP Luke Hall has now completed its move to Chipping Sodbury.

The new 'MP's Advice Centre' is located at 26 High Street, Chipping Sodbury, BS37 6AH. It is open from 9.30am until 4pm Monday to Friday with no appointment necessary. Fridays are however by appointment only.

Luke Hall MP holds regular Friday surgeries which can be booked by phoning 01454 311 267 or emailing Luke direct at [luke.hall.mp@parliament.uk](mailto:luke.hall.mp@parliament.uk). For Tesco Thornbury Surgery dates please check [lukehall.org.uk](http://lukehall.org.uk).



# Family activities with AFL



## **Have a Go Day – Electricity in Your Hands**

**Wed 10 August, 10 – 4, Lawrence Weston Community Farm, Bristol**

Build your very own wind turbine to take home! Work with a scientist to test what electricity your turbine will generate and enter a competition to power a light bulb. Impress friends with your new knowledge of aerodynamics! No booking necessary.

## **Have a Go Day – Crossing the Severn**

**Thurs 11 August, 10 – 4, Lawrence Weston Community Farm, Bristol**

Accept our challenge to find the ultimate way to cross the River Severn. Use your creativity and resourcefulness to build, slide, surf or jump over the mighty river. You will use objects and materials found in the local environment, investigate their properties and use them to discover an ingenious way to get cross the great watery barrier. No booking necessary.

## **Storytelling with Michael Loader**

**Sat 13 August, 10 – 4, Lawrence Weston Community Farm, Bristol**

Back by popular demand! Mud, salt and marsh, goddesses, fossils, and ferries, Bob Dylan, whales and warhorses - all are part of the River Severn's story. Listen to storyteller Michael Loader weave his tales of wonder and help create new legends using fascinating objects from his story bag! No booking necessary.



## **Butterflies, bugs and bees; Meadow Sweep with Ed Drewitt**

**Sunday 28 August, 10-12, Woodwell Meadows Nature Reserve, Littleton on Severn**

Come experience a beautiful wild flower meadow with local naturalist Ed Drewitt. This little known nature reserve is full of lots of beetles, bugs and colourful flowers waiting to be explored. Booking essential; go to <http://meadowsweepwithed.eventbrite.co.uk>



## Tuesday Talks

AFL's Tuesday Talks start again this September. They will be all be held at the **Oak Room at Kings Weston House, Kings Weston Lane, Bristol BS11 0UR**. Talks start at 7:30 and run for about an hour. They are free but you **MUST book at place at Eventbrite.com**. For this season's line-up, please visit [www.aforgottenlandscape.org.uk](http://www.aforgottenlandscape.org.uk)

## Art on the move

Join our artist-in-residence, Deborah Aguirre Jones, in a new Roving Art Group. Deborah's invitation: "moving around the Lower Severn Vale Levels, we will explore places and make art together through memories, mapping, looking and listening, finding things, changing things and imagining the future". The range of materials and techniques will include sculpting with willow withies, land art, beach art and sound recording. And the work will contribute towards Deborah's designs for new benches across the project area. Old hands, dabblers, novices and the just curious all welcome. Come to one or come to many!

Next sessions:

**Wednesday 3 August – 7.15pm-9pm – Littleton Village Hall**

**Wednesday 17 August – 14.00-16.00 – Rockhampton and the former Windbound**

# Website support volunteer wanted

AFL's new website aims to engage people in South Gloucestershire, Bristol and beyond. It's the central hub for our projects, the resources and information coming out of them, and a sign-post for exploring this incredible landscape and for getting involved in conserving, restoring and exploring it. As such, it's an evolving work-in-progress.

We need a volunteer to work with the team to co-ordinate and load content to the site, to help keep the details up to date and to make sure that the results of our projects are shared with the wider community.

If you have basic computer skills, your own computer, and a willingness to learn, we'd be interested in hearing from you! Previous experience of editing WordPress an asset.

Deadline for applications: Friday 22 July.

# Palace for Ducks!



Olveston has a new feature ('landmark' not being quite the appropriate term).

Port Farm's duck pond now sports a brand new residence for its denizens: 'Duckingham Palace', built by local resident Colin Prewett as a very fitting celebration of the Queen's 90<sup>th</sup> birthday.

As Les Harper's photo shows, it is a splendid edifice, and it puts the old duck house very much in the shade – though no-one has yet noticed any actual ducks that feel that way: obviously they're taking a while to get used to their new addition. But Catherine Hill is a part of the national cycle network, and it has been noticeable that cyclists have been stopping to admire the new tourist attraction. And the Editor's grandson was certainly impressed.

Well done Colin!

## A Midsummer Night's Dream at Thornbury Castle

Merry Mechanicals Theatre Group presents William Shakespeare's most beloved romantic comedy. In a bewitching tale of love and fantasy, four star-struck lovers and a hapless band of would-be thespians are dragged into the feud of a warring Fairy King and Queen, with plenty of mischievous fairies on hand to make sure "*the course of true love never did run smooth.*"

Local audience members will recognise plenty of familiar faces in the cast from various Thornbury drama societies, as well as some wonderful talent new to Thornbury.

A Midsummer Night's Dream will be performed in the enchanting **grounds of Thornbury Castle, at 19.30 on Friday 2<sup>nd</sup> September 2016, and 14.30 and 19.30 on Saturday 3<sup>rd</sup> September 2016.** Bring a picnic and a picnic blanket (some seating available). Tickets (£10) will be available at RA Bennett Estate Agents on The Plain, or by phoning Sarah Cullyer on 411573.

## Yours Faithfully

**Whatever happens, it happens for good!**

*Fr. Lazarus Msimbe  
Christ the King Parish*

How true is this statement? The answer will be provided by this story. There was once a king who was fond of hunting. He was always accompanied by his consultant, who was very close to him. This consultant had a habit of saying to everyone, "*Whatever happens, it happens for good.*"

During one of the king's hunting excursions, there was a terrible accident and his finger was chopped off. His consultant, according to his habit, couldn't stop himself from saying, "Whatever happens, it happens for good" Since the king was the victim, he got very annoyed with the consultant and put him in jail.

On another hunting trip, the king was captured by cannibals and was about to be killed when they noticed his finger was missing. According to their tradition, they were not allowed to kill a person if any body part was missing. So, they reluctantly set him free.

The king recalled the words of his consultant, "Whatever happens, it happens for good" and realised how true they were. He went to the consultant in jail and apologised for his mistake.

However, the consultant said it was good that he was jailed. Otherwise he would have accompanied the king on the hunting trip and would have been eaten by cannibals.

***Both men realised just how true the consultant's words were.***

***The moral of the story:*** Many times we are taken aback by the short-term impact of an event and don't realise how it is shaping our long-term future. It is nature's way of guiding our lives and making us realise that ***whatever happens, it happens for good!***

# Church News

## ST MARY THE VIRGIN, OLVESTON

|        |      |                            |                     |
|--------|------|----------------------------|---------------------|
| Aug 7  | 8am  | Holy Communion             | Rev Roly Bain       |
|        | 10am | Holy Communion             | Rev Ann Lloyd       |
|        | 6pm  | Evensong with Choir        | Mr Denis Jones      |
| Aug 14 | 8am  | Holy Communion (BCP)       | Rev Ann Lloyd       |
|        | 10am | Morning Worship with Choir | Mrs Janet McBride   |
|        | 6pm  | Holy Communion             | Rev Roly Bain       |
| Aug 21 | 8am  | Holy Communion             | Rev Roly Bain       |
|        | 10am | Holy Communion with Choir  | Rev P Rowe & E Mead |
|        | 6pm  | Evensong                   | Rev R Bain & T Cook |
| Aug 28 | 8am  | Holy Communion(BCP)        | Rev Ann Lloyd       |
|        | 10am | Fourth Sunday              | Rev Roly Bain       |
|        | 6pm  | Evensong(BCP) with Choir   | Rev Philip Rowe     |

Information on services correct at time of going to press.

**Rev Philip Rowe**, 01454 613223; email: [office@stmaryssevernside.org.uk](mailto:office@stmaryssevernside.org.uk)

**Rev Roly Bain** for Baptisms, Marriages & Funerals 01454 616593.

**Verger:** **Mrs. June Robbins**, 01454 617491

[www.stmarysolveston.org.uk/index.html](http://www.stmarysolveston.org.uk/index.html)

**PRAYER GROUP:** Mondays, 2.45pm in the Chancel

**WEDNESDAY HOLY COMMUNION:** At 9.00am led by the Rev. Roly Bain except 4<sup>th</sup> Wed when it is at Olveston Methodist Church

**Morning Prayer** 8.30am daily ex. Wed

## CHAPELRY OF ST JOHN, AUST

|        |      |                 |                |
|--------|------|-----------------|----------------|
| Aug 14 | 5.30 | Holy Communion. | Rev Ann Lloyd  |
| Aug 28 | 5.30 | Evening Service | Rev Ann Parker |

**Focal Minister:** **Rev Ann Parker**, 01454 632329

e-mail [annatdibley@btinternet.com](mailto:annatdibley@btinternet.com)

**Church Wardens:** Jon Burnett 633835 & Jenn Dickens 632035

## ST MARY DE MALMESBURY, LITTLETON-ON-SEVERN

|        |     |                |                  |
|--------|-----|----------------|------------------|
| Aug 7  | 9am | Morning Prayer | Mrs Tracey Black |
| Aug 21 | 9am | Holy Communion | Rev Lisa Wigmore |

**Contact** **Mrs Tracey Black** 01454 417660



## ST JOHN THE EVANGELIST, ELBERTON

|        |     |                |                 |
|--------|-----|----------------|-----------------|
| Aug 14 | 9am | Matins         | Sandra Edgerton |
| Aug 28 | 9am | Holy Communion | TBA             |

Contact Mrs Tracey Black 01454 417660

## OLVESTON AND TOCKINGTON METHODIST CHURCH

|        |             |                          |   |
|--------|-------------|--------------------------|---|
| Aug 7  | 10am<br>6pm | Tock Ch.<br>St Andrew's. | Morning Worship led by Mr Robert Wood<br>United Service with St Andrews led by Mr Robert Wood |
| Aug 14 | 10am        | Olv. Ch                  | Morning Worship led by Rev Andrew Orton   |
| Aug 21 | 10am        | Tock. Ch.                | Morning Worship with Holy Communion led by Rev Pete Brazier                                   |
| Aug 28 | 10am        | Olv. Ch..                | Morning Worship led by Rev Sandy Williams   |

**NORTHWICK LUNCHEON GROUP:** This meets at 12.30pm on Wed. 10<sup>th</sup> August  
To book your lunch please ring 416528

**TOCKINGTON LUNCHEON GROUP** No meeting in August

**COFFEE MORNINGS:** Sats 10.30 - 12 noon in the Olveston Methodist Hall.

**PRAYER MEETING** Tuesdays 9.00-10.00 in Olv. Methodist Church.

**HOUSE GROUP** Thurs 11<sup>th</sup> August at 7 The Green Olveston at 10.30

**THE OLVESTON COMPUTER CLINIC** Olveston Methodist Hall

Monday 2-4pm Wednesday 10-12 Friday 7-9pm

Ring 07833 354672 or 07957 433091 for further information.

**CONTACT: Rev Pete Brazier Tel 01454 418176,**

**e-mail [pete@thebigfishcafe.co.uk](mailto:pete@thebigfishcafe.co.uk)**

## THE VINE, AWKLEY

The Vine, Pilning Street, Awkley

We meet in a relaxed, informal manner for worship, prayer & conversational Bible studies incorporating Communion, on Sundays at 10.30am and Mondays and Wednesdays at 7.30pm We also visit other Churches and events so please check our Notice Board or contact .

**Mike and Barbara Matthews,** tel. 07512 917229 or email:

**[thevine\\_awkley@hotmail.com](mailto:thevine_awkley@hotmail.com)**

## THE OASIS CHURCH OLD DOWN

|        |        |                      |
|--------|--------|----------------------|
| Aug 7  | 6.30pm | The Gideon's Society |
| Aug 14 | 6.30pm | Paul Ashford         |
| Aug 21 | 6.30pm | Rev Neil Mobbs       |
| Aug 28 | 6.30pm | TBA                  |

Each Thurs at 7.30pm Prayer & Praise Time

For further information please contact **Ceri Morgan-Davies** 413043

**Paul Ashford**, 07774 110 814 or email: [Paul@CalebGroup.net](mailto:Paul@CalebGroup.net)

## AUST EVANGELICAL CHURCH Family Worship 11.00am

For more details contact **Ann Roberts** 632564.

e-mail [ann.roberts@bylanes.co.uk](mailto:ann.roberts@bylanes.co.uk)

## LITTLETON EVANGELICAL CHURCH

Evening Worship every Sunday at 6pm for details tel. 413247

## RC CHURCH OF CHRIST THE KING, Thornbury -

Sun 8.30am Mass 11.00 Family Mass

Monday-Friday Daily Mass at 10am

Tel 01454 412223 [www.ctlk-thornbury.org.uk](http://www.ctlk-thornbury.org.uk)

## SOCIETY OF FRIENDS (QUAKERS), Thornbury

Meeting for Worship Sundays 10.30-11.30: The Hanover Room, The Chantry, Castle St. Wheelchair accessible. Children welcome with prior notice.

Local contact: Roger Howell [rog3er2@gmail.com](mailto:rog3er2@gmail.com) 01454 415035

National: [www.quaker.org.uk](http://www.quaker.org.uk) Bristol area: [www.bristolquakers.org.uk](http://www.bristolquakers.org.uk)

# Diary Dates for August 2016

The information given below is believed to be correct as we go to press.

|                      |  |   |                         |
|----------------------|--|---|-------------------------|
| 1 <sup>st</sup> Mon  | Children's Movie Club<br>Computer Clinic every week<br>Monday Movie  | 10am<br>2-4pm<br>7.30pm                         | StM<br>MH<br>StM        |
| 2 <sup>nd</sup> Tue  | Friends of Daldry Gardens Coffee Morning   | 10.30-12.00                                     | DGCL                    |
| 3 <sup>rd</sup> Wed  | Computer Clinic every week<br>Table Tennis<br>AFL Art on the Move<br>R. B. L.(Women's section) Ploughman's | 10.00-12.00<br>7-8.30pm<br>7.15-9.00pm<br>12.00 | MH<br>PH<br>LVH<br>DGCL |
| 4 <sup>th</sup> Thu  | Thornbury Farmer's Market<br>Coffee Shop   | 9am-1pm<br>10.00-12.00                          | OST                     |
| 5 <sup>th</sup> Fri  | Thornbury Carers Support Group<br>Computer Clinic every week   | 1.00-3.00pm<br>7.00-9.00pm                      | Chy<br>MH               |
| 6 <sup>th</sup> Sat  | Coffee Morning<br>Litter Pick  | 10.30-12.00<br>1.00pm                           | MH<br>PH                |
| 7 <sup>th</sup> Sun  | Bingo every Sun at Sports & Social club  | 7pm   |                         |
| 8 <sup>th</sup> Mon  | Children's Movie Club  | 10am  | StM                     |
| 9 <sup>th</sup> Tue  | Friends of Daldry Gardens Coffee Morning<br>Memory Café  | 10.30-12.00<br>10.15-11.45                      | DGCL<br>TMH             |
| 10 <sup>th</sup> Wed | Beat Surgery<br>Table Tennis   | 10.30-11.15<br>7-8.30pm                         | OST<br>PH               |
| 11 <sup>th</sup> Thu | Coffee Shop  | 10.00-12.00                                     | OST                     |
| 12 <sup>th</sup> Fri |  |   |                         |
| 13 <sup>th</sup> Sat | Coffee Morning<br>Coffee Morning<br>Kebab Quiz   | 10.30-12.00<br>10.30-12.00<br>7.30              | AVH<br>MH<br>StM        |
| 14 <sup>th</sup> Sun |  |   |                         |
| 15 <sup>th</sup> Mon | Children's Movie Club<br>Monday Movie Extra  | 10.00am<br>7.30pm                               | StM<br>StM              |
| 16 <sup>th</sup> Tue | Friends of Daldry Gardens Coffee Morning   | 10.30-12.00                                     | DGCL                    |
| 17 <sup>th</sup> Wed | Table Tennis<br>Jazz at the White Hart Olveston  | 7-8.30pm<br>8.30pm                              | PH                      |
| 18 <sup>th</sup> Thu | Thornbury Farmer's Market  | 9am-1pm   |                         |
| 19 <sup>th</sup> Fri |  |   |                         |
| 20 <sup>th</sup> Sat | Coffee Morning   | 10.30-12.00                                     | MH                      |
| 21 <sup>st</sup> Sun | S Glos Strays 'Doggy Day' & Family Fair at<br>Avon Riding centre Henbury                                   | 9.45 on   |                         |
| 22 <sup>nd</sup> Mon | Children's Movie Club  | 10am  | StM                     |

|                                   |  |                                      |                 |
|-----------------------------------|--|--------------------------------------|-----------------|
| 23 <sup>rd</sup> Tue              | Friends of Daldry Gardens Coffee Morning<br>Memory Café<br>Olveston Parish Council meeting | 10.30-12.00<br>10.15-11.45<br>7.30pm | MH<br>TMH<br>AP |
| 24 <sup>th</sup> Wed              | Table Tennis   | 7-8.30pm                             | PH              |
| 25 <sup>th</sup> Thu              | Coffee Shop  | 10.00-12.00                          | OS†             |
| 26 <sup>th</sup> Fri              |  |                                      |                 |
| 27 <sup>th</sup> Sat              | Coffee Morning   | 10.30-12.00                          | MH              |
| 28 <sup>th</sup> Sun              | Aust Quiz Night at Boar's Head   | 7.30pm                               |                 |
| 29 <sup>th</sup> Mon              | Children's Movie Club<br>Cream Teas on Tockington Green                                    | 10am<br>2.30-5pm                     | StM             |
| 30 <sup>th</sup> Tue              | Friends of Daldry Gardens Coffee Morning   | 10.30-12.00                          | DGCL            |
| 31 <sup>st</sup> Wed              | Table Tennis   | 7-8.30pm                             | PH              |
| <b>Looking ahead to September</b> |  |                                      |                 |
| 3rd<br>17th                       | Classics and Jazz<br>Harvest Fayre on Tockington Green                                     | 7.30pm                               | StM             |

**KEY:** AC Aust Church; AH – Armstrong Hall; AMC – Alv Meth. Ch.; AMH- Alv Meth. Hall; AP – Alexandra Pavilion; AVH – Aust Village Hall; ; CH – Cossham Hall; Chy – Chantry ;CS Castle Sch.CTK Christ the King DGCL – Daldry Gardens Community Lounge; EVH – Elberton Village Hall; LVH Littleton Village Hall MH – Olv.Meth.Hall;OMC Olv Meth Ch OS – Olv. School; OSt – Olv. Stores; OV – Olv Vicarage; PH – Olv Parish Hall; StM St Mary's Church, Olv.; StMA Almondsbury Church StMTSt Mary's Thorn TCh Tock Chapel; TBCh - Thornbury Baptist Church; TMH – Thorn. Methodist Hall; ; WR – Wesley Rooms.WHLS URC United Reform Ch Th

**Contact details** for any clubs or organisations in the Meeting Point area can be found in the Meeting Point Directory on the community website: [www.olvestonandaust.com](http://www.olvestonandaust.com). If you would like to update your organisation's details, please email: [meetingpointsecretary@olvestonandaust.com](mailto:meetingpointsecretary@olvestonandaust.com)

**Advertisements** Neither Meeting Point, its editor, nor management committee accept any responsibility or give any guarantee in case of any dispute or claim as to quality, condition or delivery of commodities or services advertised in this magazine. It is not to be taken that publication implies recommendation. It is always advisable to check prices when ordering goods or services.

**Views** expressed by contributors are not necessarily those of the editor or Meeting Point magazine.

**Copyright Meeting Point 2016.** Copyright remains with the author(s) and Meeting Point. No part of this publication may be reproduced or transmitted in any form without the prior permission of the copyright owners.

Meeting Point is printed by **Motion Design and Print**.