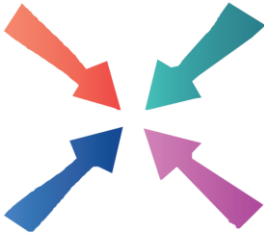


# Meeting Point



December 2017



# Meeting Point

**Volume 42, Number 3, December 2017**

The community magazine for the villages of Olveston, Tockington, Old Down, Lower Hazel, Awkley, Ingst, Aust, Elberton and Littleton upon Severn

## From the Editor

### EDITOR:

**Marelin Orr-Ewing**  
Courtlands  
Olveston  
Bristol BS35 4DU  
Tel: 01454 610081  
*meetingpointeditor@gmail.com*

### ASSISTANT EDITOR:

**Angela Williams**  
Ashlea  
Haw Lane  
Olveston  
Bristol BS35 4EG  
Tel 01454 612850  
*meetingpointmagazine@gmail.com*

### ADVERTISING:

**Nigel Dawes**  
Cromwell House  
The Street,  
Olveston  
Bristol BS35 4DR  
Tel: 01454 201558  
*julie.dawes@tiscali.co.uk*

Publication date  
*1st of each month*

Material for January 2018  
to the Editor or Deputy Editor  
by 4<sup>th</sup> December 2017.

This edition of Meeting Point should have dropped through your letter box on, or very near, December 1<sup>st</sup>. For many of us this marks the beginning of a very busy time known as 'the run up to Christmas'. I don't know about 'running' but I seem to do a lot of driving, shopping, cooking and wrapping in these weeks. If you want a break from all this, as I know I shall, there are a lot of local events planned for December

The Olveston School Fayre will be on my list as it is also an opportunity to buy our Christmas Tree in plenty of time for once. The Village Carol Service in St Mary's Olveston and Singing for Christmas on Tockington Green will both be wonderfully atmospheric occasions and, for those of us with children or grandchildren to entertain, there is a Children's Movie Club offering that has a distinctly Christmassy theme.

Meeting Point wishes all its readers a very Merry Christmas and a Happy and Peaceful New Year.

*Marelin*

The cover is by Lisa Helyar

Meeting Point Founded in 1976 by the Anglican and Methodist churches in Olveston, near Bristol

Meeting Point magazine and Meeting Point Directory are online at the Community Website: [www.olvestonandaust.com](http://www.olvestonandaust.com)

# News from St. Mary's



*Trevor Cook*



Christmas is upon us and the village is lit, trees are up and it only remains to celebrate the joy of the coming of Christ into the world. There has been a lot going on and a lot yet to come and we look forward to seeing you over Christmas.

On October 9<sup>th</sup> at our morning service, we were very pleased to welcome Dr Christoph Schwitzer, Director of Conservation at Bristol Zoo. He gave a very interesting and thought-provoking talk about the work that Bristol Zoo does with conservation both locally, nationally and internationally. He made particular reference to the zoo's work in Madagascar to protect the lemurs, which also included issues such as the importance of education and sustainability. At the end of the service there was a retiring collection for the zoo's conservation work which totalled £243.75.

## **Toy Service**

Our 10 am service on 3<sup>rd</sup> December will feature the Reach Up, Reach Out puppet team, who will be performing sketches and songs related to Christmas. A collection of new toys will be made and these will be donated to the Salvation Army who will distribute them to disadvantaged children in Bristol. It is a lively, fun service with a different take on Christmas! Tockington Manor choir is hoping to come and sing for us. Do come and join us.



## **Star Trail**

In the week beginning the 4<sup>th</sup> December, a Star Trail will be set up for local schools to explore. It is a delightful trail to encourage pupils to reflect on the Christmas story, explore the meaning of Christmas and reflect on their own life journey. All are welcome to come and explore it for themselves when the church is open. Children, why not bring your parents so that they can find out what you have been learning about?

## **Salvation Army Concert**

You have seen and heard them as you do your Christmas shopping; come and hear them in concert and experience the full range of their music; it will surprise and delight! Tickets cost £5 and the Concert begins at 7.30 on the 9th December

## **Carols in the church**

The village carol service is planned for 17th December at 6pm. Do come along and join friends and family to either sing or simply listen to a selection of our favourite Christmas Carols.

## Christingle

Always a popular with young and old alike, bring your children, or grandchildren, to this joyous celebration of Christ's Light which is on Christmas Eve at 4pm in the church.

## Revd Philip Rowe

At 10am on New Year's Eve we will celebrate the many years of Revd Philip Rowe's excellent service to our community. Do come along and say farewell to Philip; he isn't going far and I am sure we will see him again but even so we wish him all the best. At the same time we welcome Revd David Moss as he takes up the responsibility for Olveston and Aust churches in addition to Alveston, Littleton and Elberton.

# Olveston and Tockington Methodist Church - Celebrating Christmas

**Sunday 3<sup>rd</sup> December 6pm:** Tockington Chapel. Carols for Advent, led by Pete and Debs Brazier, with St. Andrew's Filton.

**Sunday 10<sup>th</sup> December 6pm:** Olveston Chapel. Christmas Service, with carols, reading and candles led by Glyn Varney. Followed by coffee and mince pies in the adjacent Hall.

Voluntary collection in aid of Action for Children and Christian Aid.

**Wednesday 20<sup>th</sup> December from 6.30pm:** Tockington Green. Singing for Christmas. Favourite carols and Christmas songs accompanied by John Green. Come and go as you wish. Bring torches/lanterns. Words will be provided.

In the Chapel from 6.30 – hot drinks and savoury nibbles and mince pies.

Donations as wished for Action for Children or the Stroke Association.

## A Forgotten Landscape

**Weekend Hedge Laying Course, Saturday 9 & Sunday 10 December 9am - 4pm, Rockhampton.** For further information visit:  
[www.aforgottenlandscape.org.uk/get-involved/events](http://www.aforgottenlandscape.org.uk/get-involved/events)

To everyone who has followed, got involved with, or supported our project over this year, we wish you a heartfelt Merry Christmas – and all the best for 2018!

# Brownies' Weekend at Badminton

The Brownies had an exciting weekend at Badminton Cottages from 6<sup>th</sup> to 8<sup>th</sup> October and this is an account of the trip through their eyes. The theme for the weekend was the latest Disney film, Moana.

## Friday



“First when we arrived, we played games. After this, we went walking and got to the cottages and unpacked. We then had a yummy tea! We tidied our dorms for the room inspection and wrote in our diaries after tea. After, we sorted everything out, we had a little fire and we all started singing songs. We then it was time for bed in our nice and cosy dorms.”

## Saturday

“Today, we woke up and had our breakfast of toast and cereal, after having fun doing each other’s hair. After we got dressed, we went on a walk for 45 hardworking minutes with sweets on along the way. Soon after getting back, we ate sandwiches and crisps and we played in the forest on a rope swing. In the woods, we also made dens and made popcorn and camp doughnuts. We could not miss out in toasting the marshmallows, they

were yummy! After having a tea of chicken and pasta with vegetables, we went back outside to find the heart of te-fiti. It was so pretty to see. We then went straight to bed as we were all so tired.”

## Sunday

“Today is the last day of Badminton. Let’s make the most of it! We had cereal and toast for breakfast again and when we had finished tidying, we had our hair done by Moana. Once we were ready, we went outside to do Tamatoas Tricky Challenges which included: an obstacle course, Frisbee golf, and a game where you had to fill your pockets with balls and go along some ropes without dropping them. Later on, we made sand jars with loads of colours with salt. Then we made gel bags with sparkles that looked like the sea. For lunch, we helped Sina make pizzas and whilst eating them, we had a huge ladybug invasion! We then played in the woods for a bit before we had a walk back to the village hall, where we were being picked up by our parents. I had a lovely time at Badminton Cottages.”



## DECEMBER PROGRAMME

Trevor Anderson

Christmas Greetings to all readers from the Movie Club Team in Olveston. Details of our December films are given below. Everyone is welcome (you don't need to be a Movie Club member) and there is no need to book. Admission is free, although a **donation** at the end towards expenses is always appreciated.

### MONDAY MOVIES (*1<sup>st</sup> and 3<sup>rd</sup> Mondays of each month at 7.30pm*)

**Mon 4 Dec:** One of the most acclaimed films of the year, this is a drama about a young woman and her son and their struggle to adjust to life after having been confined in a small room for several years. This unique and touching exploration of the boundless love between a mother and her child has been described by one reviewer as *"an intensely powerful and wonderfully life-affirming experience."* (2016, Cert 15)

**Mon 18 Dec:** After their steel factory in Sheffield shuts down, six former workers need to find a way to make money. With a mix of determination and desperation, they decide to do something which will hopefully bring in thousands of pounds. This Academy Award winning film was the UK's biggest box office attraction of its year and a surprise world-wide hit. (1997, Cert 15)

### CHILDREN'S MOVIE CLUB (*10.00am in the school hols*)

**Tues 19 Dec:** After inadvertently wreaking havoc on the elf community due to his ungainly size, a man raised as an elf at the North Pole is sent to the U.S. in search of his true identity. This spirited, good-natured family comedy is full of Yuletide cheer, (2003, Cert PG). (NB: Tues, not Mon, because of school hols.)

All the films are shown in **St Mary's Church, Olveston** and doors open 30 minutes before the start. Refreshments are available at all the shows, plus licensed bar in the evenings and popcorn and soft drinks in the mornings.



We make no charge for entry, but we do value and appreciate a small **donation** at the end towards expenses if you have enjoyed the evening.

For copyright reasons we can't name the films here, but if you join the Movie Club we'll send you titles and full details by email. It costs nothing to join – just email me at [trevoranderson@btinternet.com](mailto:trevoranderson@btinternet.com)

# Thornbury and District Cancer Research UK.

**Sip'n'Sing** is back! Thursday, December 7th, 7.30pm at St.Helen's Church, Alveston.

Come along and join in the fun of Christmas singing accompanied by the young group Betar Brass. Enjoy handbell ringing and lots more. The church is without pews so the large open seating area offers a splendid venue for such gatherings. Everyone is welcome to join us as we hope to set the festive mood!

Teas/coffees/mince pies are included in the cost of the £7.50 per ticket, and you are invited to BYO drinks and glasses. We'd love to see you there. Tickets available soon. Ring Mary 01454 414466 or email: [maryjhurford@gmail.com](mailto:maryjhurford@gmail.com)

## Bob and Cynthia Tippetts

A short while ago Meeting Point received a letter from the daughters of Bob and Cynthia Tippetts with the sad news that they had both passed away within the last two years. Although they had moved away from Olveston about eight years ago, due to ill health, they had retained an interest in the village.

Bob was featured in Meeting Point back in December 2005 and, in this article, he explained that he had spotted an old stable block 'ripe for renovation' as he passed through Olveston one day in 1960. Living in two caravans on site the family worked with local builder, Roy Pitcher, and in due course The Barn, Aust Road, became their home for over forty years.

## A History of Olveston Court

The present occupants of Olveston Court are writing a history of the Court and the people who lived there. If you have any memories of the Taylors, Closes, or Carns, or of visits to the Court, Brian Kemp would love to hear of them. It would be especially interesting to learn whether other local houses have Quaker memorial stones.

Please contact Brian Kemp at: [olvestoncourt@gmail.com](mailto:olvestoncourt@gmail.com)

# St Peter's Hospice Severnside Support Group - Christmas Bazaar

The Annual Bazaar for St Peters' Hospice will take place in the Thornbury Methodist Church Hall on December 9th between 10.00am and 12noon.

There will be a variety of stalls including - Cards, Gifts, Crafts, Home made preserves, Cakes , Books, plus many more. Raffle and Teas.

Entry by Donation. Thank you for supporting St Peter's – your local Hospice.

## Fun Run - Thanks

A big 'Thank You' to everyone who made the Olveston Fun Run such a success last month. The total amount raised for the School was a fantastic £1,563.36, with a special thank you to Soilfix for match funding the initial amount raised (£781.68).

We would also like to thank Linela for their generous donation of all the medals, Tesco for donating bananas & bread rolls, the landowners for allowing access along the route and to Thornbury Running Club for the loan of their equipment.

## Inner Wheel Club of Thornbury Carol Service

St Mary's Church, Olveston. Wednesday 13<sup>th</sup> December at 7pm

In aid of Spring of Hope Women's Night Shelter.

All welcome.

**Litter Pick.** Please meet at the Parish Hall car park on Saturday 2<sup>nd</sup> December for the final litter pick of the year.

**Found.** A set of keys was found on Tockington Green during the Harvest Fayre. Please contact Sharon Lapworth 01454 613503



# Oveston School Christmas Fayre

This is a reminder about our ever-popular Christmas Fayre on Friday 1st December from 3:30pm - 5:30pm. This wonderful event will be buzzing with activity for children and adults alike.

Nordman Super Premium Christmas Trees - supplied by Frenchay Forestry - will be on sale. Support the school and buy your tree here! (If you're unable to attend the Fayre but would like to purchase a tree, please contact the School Office on 01454 613299) To ensure the tree is kept fresh you can keep it outside or in some water until you are ready to decorate it.

Plenty of refreshments will be on offer including a festive BBQ, delicious cakes and drinks. And Father Christmas will definitely be making an appearance!

All are welcome and we look forward to seeing you.

## Old Down Cricket Club

*Tony Gardner 07889 727729*

### **150 Club Winners November 2017:**

£50 Katie Finch  
£15 Bhavin Radia  
£5 Dave Gardner

Up the Down!!

## Parish Players present 'The Wizard of Oz'

Make a note in your diaries now, as family favourite 'The Wizard of Oz' is coming to Tockington for next February half term. Dorothy's adventures with her friends the Scarecrow, Tin Man and Cowardly Lion (not forgetting the Munchkins) are sure to brighten your winter evenings.

This much-loved musical, with its splendid songs and memorable score, will be Parish Players' production for 2018. It takes place on Wednesday 14th to Saturday 17th February at the Parish Hall. Once again, the show is the product of a creative team led by experienced and hard-working director Linda Evans, so you are in for a treat! Tickets will go on sale on Saturday 6th January at Oveston Stores from 9.30am - 11.30am.

# Vegetable Matter

Chris Bolton

I haven't written one of these articles for a while now, owing to an extended visit to Australia. You may say I could have sent something from there, and so I could, but you know how it is when you're enjoying yourself...

I did see a splendid community garden there, on the leafy campus of my grandchildren's school in Fremantle. It has patches for the kids, patches for the parents, and patches for the neighbours, and it certainly binds the community together marvellously, with all sorts of projects going on.



Here is a picture from my daughter-in-law's vegetable patch, and my question is: what's missing?

Look carefully at the top of her broad bean plant: no trace of blackfly, which certainly plague my broad beans every year, to the extent that I pick out the tops, like most of my allotment neighbours. I don't know whether blackfly just don't occur in Oz, or what. Can anybody enlighten me?

Back home, my allotment had been doing a lot of growing in my absence. Kind friends had harvested some produce whose arrival I hadn't timed right, but mostly what was in evidence was weeds, to which I have devoted a fair amount of time.

The growing season for many items is coming to an end (though some of my neighbours are clearly keener on cabbages than I am), and folk are doing pre-winter tidying. I have seen several people putting their strawberry plants in order – clearing beds that have been there for three years or more, transplanting infant plants that the runners have produced, and so on. This is a job that definitely gets you on your hands and knees – unless you are the owner of this impressive double-decker structure that has appeared this year. Chest-high strawberries – just imagine the convenience of that!



# Olveston & Tockington W.I.

*Vicki Townsend*

We have been treated to two interesting speakers at the monthly meetings recently. Mike Perry, long time butcher in Olveston, gave an account of his life, followed by a demonstration of sausage making, the results of which were distributed amongst members. Mike had been in the butchery business in Devon, where he studied for his butchery qualifications. He moved into his present premises on Olveston Parade 35 years ago. He has won many sausage making competitions with his many flavour combinations, including Bristol Blues, which incorporate blueberries and blueberry jam, a name suggested in a radio programme. Perry's porkers remain a very popular favourite

David Hargreaves told of the mining history in South Gloucestershire, many local names relating to mining activity. Iron mines in Iron Acton and also in Frampton Cotterell, coal in Coalpit Heath, the coal area stretches from Cromhall to Somerset. There was lead mining at Tortworth and silver and lead mines at Itchington.

The AGM will be held in November, to determine the future direction of the group as it enters its centenary year in 2018, having been instituted only three years after the original national formation of the Women's Institute.

The December meeting will be a 'members only' Christmas social event, with a buffet, provided by members. This is always very popular.

The W.I meets on the second Tuesday of the month at 7.30pm in the Parish Hall. New members and visitors will be given a warm welcome at any meeting in the New Year



## Why not join Olveston Parish Council ?

*John Hughes (john.hughes@olvestonparishcouncil.gov.uk)*

Dear Parishioners, as Chairman of Olveston Parish Council I have been asked by my fellow Councillors to make a plea to all residents to join the Parish Council.

The Council has been running without one Councillor for over a year and with the recent resignation of a second Councillor, we are struggling to fulfil all of its obligations and duties. This is important as the Parish Council has an annual income of over £50,000 from the local taxes that you pay to support the Parish needs. This covers the maintenance of local amenities such as the play areas, the War Memorial, the Queen Alexandra Memorial Pavilion, and to improve/ maintain the environment that we all live in. Planning Applications are considered by the Parish Council and its local observations submitted to South Glos. Council for inclusion in its planning process. The Parish Council is working with local residents and the District Council to try and improve both the parking issues and reduce speeding throughout the Parish; to work with the District Council to provide appropriate housing in the Parish that supports the existing Community and promotes its long term vibrancy, as well as the recently started Biodiversity project.

'Localism', 'Austerity' and 'Brexit' have all been buzzwords coined in recent years to reflect changes in Society, the reality has been that many of the local services (such as Library services) have been trimmed at a District Level. Town and Parish Councils are expected to decide on behalf of their communities whether they wish to take on additional responsibilities or allow them to become lost. The Parish Council is also asked to respond on behalf of residents to the many Consultations published by South Glos. Council, and to maintain its finances and contact information in line with new legislation including tougher Data Protection responsibilities.

It is appreciated that Parishioners already actively support the Scouts and Guides as voluntary leaders; the local Schools as Governors and as Friends; give their time to the Committees of the many clubs and societies that exist in our thriving Community; support the Parish with regular litter picking and various initiatives; and are always prepared to help with specific projects whether the purchase of defibrillators or the provision of a replacement play area and the many Church led projects, and for that we, the Parish Council thank you. The Parish Council is similarly a group of unpaid volunteers, striving to give their best for the Community they represent. However to do our job properly we need to have a full Council to properly fulfil its obligations.

Are you able to help our Community? If so why don't you come to a Parish Council meeting which meets on the 4<sup>th</sup> Tuesday of each month at 7.30 pm – we would love to see you. We also have a Parish Surgery which meets every 3<sup>rd</sup> Wednesday at the Methodist Hall (6.30 till 7.30) – we would welcome you coming and talking to us. If you don't want to commit to a full time role, we would welcome you joining our growing band of volunteers who help out on various Projects from time to time

Please write to me at the above address or better still give me a ring on 01454 613754. Thank you - I look forward to hearing from you

# Secret Underground Cities

Olveston Parish Historical Society talk: all welcome.

Wednesday 6<sup>th</sup> December 7.30pm, Olveston Methodist Church



By 1934 the British Government knew that war with Germany was inevitable within the next decade, and in that year, despite all the talk of appeasement, preparations were begun to make Britain ready for battle.

In north Wiltshire, several hundred acres of deep, disused and abandoned stone quarries one hundred feet below the villages of Neston, Gastard and Monkton Farleigh near Corsham were

converted at enormous expense to create Central Ammunition Depot Corsham, the largest underground ammunition depot in the world, designed to store and issue all the ammunition required by the British Army during the Second World War.

Complete with underground power stations, some twenty miles of conveyor belts, narrow gauge railway systems and even a standard gauge underground railway station adjacent to Brunel's Box Tunnel (accessed by a side-tunnel at the east end of the main-line tunnel), the whole project was an engineering masterpiece.



In 1940 the underground works in the Corsham area were extended to include a number of other facilities. One was a vast subterranean aircraft engine factory (built as an alternative, bomb-proof manufacturing facility for the Bristol Aeroplane Company at Filton); in the photo above, you can see wall paintings by artist Olga Lehmann who was asked by BAC Engine Dept. managers to cheer up the staff canteen area. Also housed in the extended underground quarry were: an underground operations centre for RAF No.10 Group, controlling all the fighter airfields in South West England; an incredible network of bomb-proof vaults to secure treasures from London museums and art galleries; and even a secret vault to house many billions of pounds-worth of bank notes, printed by the De La Rue Company for a number of mid-

European nations but which could not be delivered because those countries were under German occupation.

This was not the end of the story, however, for when the Cold War was at its peak in the early 1960s, Spring Quarry, the largest of the underground locations, became the fabled 'Burlington' bunker – the Emergency Government War Headquarters, to which the War Cabinet, the Chiefs of Staff and some 7,000 selected civil servants would move in the event of a nuclear war with the Soviet Union.

With the aid of hundreds of period and contemporary photographs, Nick McCamley will explain his discovery of these secret places, the full history of their construction and use, and of their gradual abandonment and re-use as commercial or still semi-secret government facilities.

This talk is open to all. If you sign up for annual society membership (£8), payable on the night, you get entry to this, plus four more history talks. Or it's £2 to attend a single meeting, payable on the door. Hope to see you there!  
[www.olveston.com/historical-society](http://www.olveston.com/historical-society)

## Friends of St. Mary's

The prize winners in the November draw, held on 2nd November 2017 at the Friends' Committee Meeting were:-

<u>Amount</u>	<u>Number</u>	<u>Name</u>
£150	476	Mrs A Harley, Olveston
£75	215	Mrs J Hahn, Olveston
£25	445	Mrs J Skinner, Sneyd Park
£25	574	Dr E Saunders, Olveston
£25	163	Mrs P A Kemp, Stoke Lodge
£20	580	Mr P Haworth, Olveston
£20	366	Mrs P Halfyard, Droitwich
£20	473	Mrs M Setter, Olveston
£10	317	Mrs Y Williams, Olveston
£10	493	Mr P Haworth, Olveston
£10	360	Mr & Mrs T Roper, Fernhill
£10	550	Mrs D Harries, Olveston
£10	542	Mr N Fear, Tockington

If you are not yet a member and wish to join the lottery please telephone Andy Phillips on 01454 614890.

# Making Space for Wildlife

*Catherine Offer*

Olveston Parish Council's Biodiversity Group is delighted to announce that **Mike Dilger BBC's One Show wildlife presenter, ecologist and author** will be launching "Making Space for Wildlife" here in Olveston on January 5th. Come along to the Methodist Hall between 10am and 7pm for a free Exhibition and Open day. Find out how you can support biodiversity in your own garden, allotment or window box.

Experts from a variety of organizations will be ready to give their advice about encouraging wildlife and enhancing our natural environment. Detailed surveys done 30 years ago by Olveston Parish Countryside Group will be on display, check out how the fields and verges in the parish have changed and be part of shaping their future. Find out more about protecting your mental and physical health in the most natural way.

Don't miss the highlight of the day when Mike Dilger will make a guest appearance to present the Logo Design Competition prizes and cut the cake to officially launch "Making Space for Wildlife" at 4.30pm. He will tour the exhibition and make a short presentation to the young people who have supported the competition with their amazing designs and present the prizes. All the entries will be on display and the prize winners will be announced on the day.

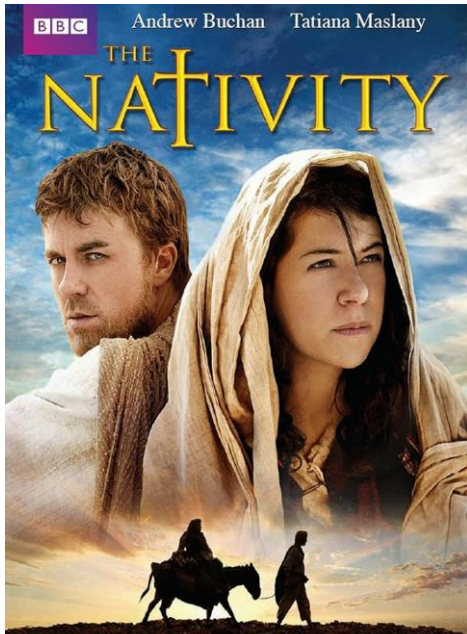
A champion of our natural world Mike has been a presenter on the BBC's One Show for ten years, appeared on numerous TV and radio shows and is the author of several books. Mike has a young family and his presentation will inspire the next generation to continue making space for wildlife. We are immensely grateful to him for giving his time to support us. Please join us to welcome Mike to our community and be part of this exciting event.

## From the Registers of St. Mary's, Olveston

24 <sup>th</sup> October	Service of Thanksgiving for John Henley Chick.
25 <sup>th</sup> October	Service of Thanksgiving for Vera Macdonald.
28 <sup>th</sup> October	Marriage of Sarah Godding and Andrew Platts.



# The Nativity



On Tuesday 12th December at 7.30pm, St Mary's Church Olveston will be showing the BBC DVD, The Nativity (2010, Cert PG, 1h 51m). Stars Tatiana Maslany, Andrew Buchan, Peter Capaldi, Neil Dudgeon, Jack Shepherd. This is an original telling of a familiar story and comes highly recommended.

Mary counts her blessings when her parents arrange to marry her to a local carpenter, Joseph. He has a good heart, but when she falls mysteriously pregnant, he can't accept her explanation. He must, however, set aside his anger, to save her life – by allowing her to travel with him to a faraway town... Bethlehem.

The tyranny of Herod, the search of the Magi, and the Earthly troubles of the lowly shepherds are all explored in this visually stunning film. It renders beautifully a classic tale and reveals that behind the traditional, there is a universal and very human story. A story of two people: a young, scared girl with a momentous role in history and the kind man who loves her. This unique take on the Nativity story explores the troubled times of turn-of-the-millennium Judea, bringing legend to vibrant life.



There is no charge for entry and there will be free mulled wine and mince pies. Donations on the evening will be welcomed.



# Parish Matters

*Richard Rogers*

*([clerk@olvestonparishcouncil.gov.uk](mailto:clerk@olvestonparishcouncil.gov.uk))*



There will be no Surgery this month due to Christmas. The next is on the evening of 17<sup>th</sup> January 2018 (the third Wednesday of the month) in the Olveston Methodist Hall (access via the sliding door in the Church vestibule) between 6:30 and 8:00.

Please come along to meet Councillors, to raise any issues that you feel that the Parish Council can

help with, or to find out more about how the parish operates.

South Glos. Council have now given Olveston Parish Council permission to co-opt a further member onto the council. The Council would like to fill the two vacancies by the New Year and adverts will shortly be published. But please, if you are interested in applying don't wait, but contact me or the other Council members for more information.

Christmas is the time for family and friends. I recently had to complete a survey for South Glos. Council on people sleeping rough in the Parish – I am not aware of any and responded accordingly but it does strike a chord, and perhaps we all should try and be good neighbours and remember others who may feel particularly alone at this time of year.

South Glos. Council have several ongoing Consultations including the South Gloucestershire Food Plan 2017, and the Ageing Better Plan 2017 where individual responses would be more useful than from the Parish Council, so for more information please visit Thornbury library or go online to <https://consultations.southglos.gov.uk/consult.ti>. The West of England Joint Spatial Plan (JSP) and associated Joint Transport Study (JTS) will also be available for consultation until the 10<sup>th</sup> January, so for more information visit [www.jointplanningwofe.org.uk](http://www.jointplanningwofe.org.uk).

The Parish Council would like to thank Catherine Offer for all her work organising the recent 'Save a Life' sessions, and wish everyone a happy time in the run-up to Christmas and New Year period.

# Robins

*Trevor Cook*

Back in March the Guardian reported that numbers of robins were at a twenty year high this year. In which case we should see plenty of them around our gardens this winter in addition to the many pictures we will find on our Christmas cards. They are an integral part of the Christmas season.



We British do have special relationship with robins for elsewhere in Europe the robin is a shy bird, skulking in the bushes and amongst the trees. But as our national bird we give them a special place in our hearts and I am sure they respond to that special relationship.

I am not sure whether it's their good looks or their apparent fearlessness that endears them to us; either way most people have had a close encounter with one at some time. They will come really close to find food and many a gardener will tell you a tale about a friendly robin rooting around in recently turned earth. But don't be fooled, robins are very private, solitary birds (until it's time to raise a family that is) and will fight each other viciously to maintain their territory.



When young birds come along they can be hard to identify, looking like the one pictured to the left. That they don't have a red breast is thought to be to prevent the parents from attacking them as potential rivals.

They are the only bird that sings all year round, with a beautiful warbling song that sounds sweet to us but is in reality a warning to other robins in the neighbourhood to keep away. And if you hear a sharp 'tick, tick, tick' in the hedgerow it is invariably a robin maintaining its pecking order and announcing its presence.

## Thank You

Ian Macdonald, Katie and Rob would like to say thank you to everyone for the kind and considerate thoughts, cards and letters that they have received since Vera passed away in October. Thank you also to those who were able to attend the celebration of Vera's life held in St Mary's and for the generous donations to the chosen charities.

Your support is beyond words.

# Aust Parish Council Matters

*Tim Pyper (austparishcouncil@googlemail.com)*

## **South Gloucestershire Policies, Sites and Places Plan Broadband Upgrade**

Andy Watkins has continued his tireless efforts to chase up the upgrades in Elberton and Littleton upon Severn. The good news is that this is said to be on track for completion before the end of December. This covers all the postcodes in Elberton and most of those in Littleton, but there are three Littleton postcodes that are not included in the plan. The parish council will fight hard to alter this. It is ridiculous that the new cabling should be put almost all round the village but miss out one postcode (BS35 1NL) where the cable goes directly past the houses and two other postcodes in Field Lane and the houses at the top of the hill towards the water works (BS35 1NT and BS1 1NT).

It also remains to be seen whether every house in each postcode will be included – we are continuing to try to get to the bottom of this and will provide the information as soon as we can.

### **Next meeting**

The Parish Council doesn't meet in December, so the next meeting will take place on 12<sup>th</sup> January 2018. The council will be looking then at the budget and setting the precept for next year. The council needs a new internal audit – see last month's notice. No one has volunteered. Please don't be shy! Please let me know if you would like to know more about the role before you consider it.

## **Alveston Singers**

We warmly invite everyone to our Christmas concerts.

**Saturday December 9th at the United Reformed Church, Thornbury,  
7.30pm**

**Tuesday December 12<sup>th</sup> at St. Helen's Church, Alveston . 7.30pm**

Our main work will be the Magnificat by John Rutter with soloist Lowri Bufton. This will be followed by carols for the choir and audience, including the first performance of a new carol specially written for the choir.

Conductor: James Davies. Accompanist: Sue Phillipson-Masters

Admission free with retiring collections for The Julian Trust, a charity for the homeless and Off the Record, a mental health charity for young people. We look forward to welcoming you in December.

# December Puzzle - A Word Wall

Sort the 16 seemingly random words or phrases below into four groups of four connected words and then explain the connection correctly. Some clues may fall into more than one category but there is only one complete solution.

<b>Hart</b>	<b>Éclair</b>	<b>Buck</b>	<b>Yule Log</b>
<b>Chip Cookie</b>	<b>Fairy Godmother</b>	<b>Tate</b>	<b>Ugly Sisters</b>
<b>Brand</b>	<b>Fawn</b>	<b>Dandini</b>	<b>Doe</b>
<b>Baron Hardup</b>	<b>Brownie</b>	<b>Millican</b>	<b>Buttons</b>

How did you get on with the November puzzle? How many words of three letters or more could you make from the words Guy Fawkes? This was only a bit of fun, but one person managed to get 68. All the words appeared in the online Google dictionary. I checked!

## Thornbury Orchestra Concert.

Saturday December 2<sup>nd</sup> 7.30pm Marlwood School .Alveston

Join Thornbury Orchestra for an evening of favourite music from the big screen and some classical greats from Mahler (Adagietto) and Gillis (Symphony 10). Full details of the programme are available at [thornburyorchestra.org.uk](http://thornburyorchestra.org.uk).

This concert is supporting Multiple Sclerosis Peoples Help (MSPH) and is based in Thornbury. MSPH has two shops in Thornbury, situated in the pedestrianised shopping precinct (either side of “Ronnies” restaurant), selling clothing, furniture and bric-a-brac. Tickets for the concert can be purchased at these shops

Adults £8, School age children £5 and under 5s free.

[www.mspeopleshelp.co.uk](http://www.mspeopleshelp.co.uk)

## Alveston Gardens Association

Monday 4<sup>th</sup> December 7.30pm in Alveston Jubilee Hall

**The Bishop’s Palace, Wells. Its Past, Present and Future.**

A presentation by James Cross

All welcome – Visitors (£3) Full programme on [www.alveston.org](http://www.alveston.org)

# Olveston Parish Hall

*Geoff Chappell*

This is a reminder that we are looking for people to join the hall committee. We need people who can make a contribution to the running of our community building. Why wait until the AGM in March when it may be too late? Enquire now. Remember, we cannot operate without a committee.

Please contact Geoff Chappell, Chair, for further details. *Tel 615806 / mobile 07919 050807/geoffrchappell@aol.com.*

## A RockPipes Burns' Night

A Burns' night with a difference at the Armstrong Hall on Saturday 20<sup>th</sup> January 2018 with entertainment provided by **RockPipes**, a 7 piece Celtic Rock Band. The traditional piping in and address of the haggis will be followed by a two course meal and there will even be time for some Scottish dancing! Tickets include the meal, a welcoming whisky dram, music, dancing, fun and games and the bar's always open!

Price £25 (or £20 early bird tickets if you book before Christmas.) Available from Thornbury Town Hall or online: [www.rockpipes.co.uk](http://www.rockpipes.co.uk) or contact Andy Warn on: 07916 253267

## Ali Baba and the 40 thieves

Pilning Village Hall

Wednesday 6th to Friday 8th December at 7.30 pm

Saturday 9th December at 1.30 & 6.00 pm

Adults £6 - Concessions £4 - Booking Office: 01454 633786 or 01454 632813.

## Octopus Drama presents Peter Pan

Christ the King Church Hall on January 10<sup>th</sup> -12<sup>th</sup> at 7.30pm with additional performances on Saturday 13th at 11.00 am and 2.30 pm.

Tickets will be available from Monday 11th December from Chappell & Matthews in Thornbury High Street, Karen on 01454 413783 or you can order them from [www.octopus-thornbury.co.uk](http://www.octopus-thornbury.co.uk).

# Yours Faithfully

*Mike Matthews,  
The Vine, Pilning Street.*

Please stop!! If only for a few minutes, which is how long it takes to read this article.

I do not know whether you are numbered amongst those who will already be caught up in the frantic preparation for Christmas. Some I know will have already completed the purchase of presents, others gearing up to do so and many intending to leave it until the last moment. Whatever group you fall into, or if you are one who stays cool and calm, I wanted to encourage you to stop, at least briefly, and think of the reason.

Those familiar with the biblical account of the birth of Jesus in Bethlehem, would understand that following the need under the decree of Caesar Augustus for all those descended from the line of David to gather there, the whole town would have been heaving with people and animals.

No glittering shopping Malls, street lightings and displays; no modern sanitation, facilities, transport, restaurants or the like, but a mainly darkened environment populated by many people of different ages drawn from the various regions. Joseph and Mary would have travelled some 80 miles at least depending on the route they took which would have meant 'camping out' on the way. Then to arrive dirty, tired, hungry possibly, with Mary heavily pregnant and 'no vacancy' signs over this relatively small town. How could so many people obtain a sufficient water supply, dispose of so much human and animal waste, sleep with the noise around them?

Is it important? Probably not. But in the midst of this turmoil, in an event that would go unnoticed by the overwhelming majority of the then population, save for a few shepherds and, of course, the vast numbers of heavenly angels, the Saviour of the world was born. And so it might be once again that in the turmoil of the season it may be overlooked by the vast majority that the one born so long ago lived, died, rose again, ascended into heaven and WILL come again.

That is why I wanted to plead with you to stop and reflect at least for a few moments. And for those who have come to embrace and appreciate the true reason for the season, may you be encouraged to share the good news with others who may even now be searching to find a resting place in Him.



# Church News

## ST MARY THE VIRGIN, OLVESTON

Dec 3	8am 10am 6pm	Holy Communion Toy Service Advent Service with Choir	Rev. Philip Rowe Rev. Philip Rowe Mr T. Cook & Rev. P. Rowe
Dec 10	8am 10am 6pm	Holy Communion Morning Worship with Choir Holy Communion	Rev Helen Webb Mrs Janet McBride Revs P. Rowe & A. Lloyd
Dec 17	8am 10am 6pm	Holy Communion Holy Communion Carol Service	Rev David Bone Rev Philip Rowe Mr Paul Harrod
Dec 24	10am 4pm 11.15	Morning Service Christingle Midnight Communion	Mr Trevor Cook P. Harrod & Rev H Webb Rev Philip Rowe
Dec 25	8am 10am	Holy Communion Morning Service	Rev Ann Lloyd Mr Paul Harrod
Dec 31	8am 10am 6pm	Holy Communion Morning Prayer with Choir No Service	T.B.A. Rev Philip Rowe

Information on services correct at time of going to press.

**Rev Philip Rowe**, 01454 613223; email: [office@stmaryssevernside.org.uk](mailto:office@stmaryssevernside.org.uk)

**Verger:** Mrs. June Robbins, 01454 617491

[www.stmarysolveston.org.uk/index.html](http://www.stmarysolveston.org.uk/index.html)

**PRAYER GROUP:** Mondays, 2.45pm in the Chancel

**WEDNESDAY HOLY COMMUNION:** At 9.00am except 4th Wed when it is at Olveston Methodist Church

**Morning Prayer** 8.30am daily ex. Wed

## CHAPELRY OF ST JOHN, AUST

Dec 10	10am	Holy Communion	Rev Ann Parker
Dec 17	4pm	Carols @ 4	Rev Ann Parker
Dec 24	11.30	Holy Communion	Rev Ann Parker

**Focal Minister:** Rev Ann Parker, 01454 632329

e-mail [annatdibley@btinternet.com](mailto:annatdibley@btinternet.com)

**Church Wardens:** Jon Burnett 633835 & Jenn Dickens 632035

## ST MARY DE MALMESBURY, LITTLETON-ON-SEVERN

Dec 3		No Service	
Dec 10	3pm	Carol/Christingle Service Mince Pies at White Hart afterwards	Mrs Tracey Black
Dec 25	8am	Holy Communion	Rev David Moss

Contact Mrs Tracey Black 01454 417660

## ST JOHN THE EVANGELIST, ELBERTON

Dec 10	9am	Matins	Judith Heybyrne
Dec 12	8pm	Carol Service at Rock House	Rev. David Moss
Dec 25	9am	Holy Communion	Rev David Moss

Contact Mrs Tracey Black 01454 417660

## OLVESTON AND TOCKINGTON METHODIST CHURCH

Dec 3	10am 6pm	Tock. Ch. Tock. Ch.	'Holy Habits' Service led by Mrs Rosalie Doyle Advent Carols with St Andrews Ch. Led by Rev. Pete & Mrs Debs Brazier
Dec 10	10am 6pm	Olv.Ch. Olv. Ch.	Morning Service with Holy Communion led by Rev Pete Brazier Carol Service led by Mr Glyn Varney
Dec 17	10am 6pm	Tock. Ch St Mary's.	Morning worship led by Miss Rosemary Clews Village Carol Service
Dec 24	10am	Olv. Ch.	Morning Worship led by Rev. Dilwyn Edwards
Dec 25	10.15	Tock. Ch.	Christmas Day Service led by Mrs Debs Brazier
Dec 31	10am	Tock. Ch.	Morning Worship led by Rev. Pete Brazier

**CAROLS ON TOCKINGTON GREEN 6.30pm 20<sup>th</sup> December**

**NORTHWICK LUNCHEON GROUP:** This meets at 12.30pm on Wed. 6<sup>th</sup> December To book your lunch please ring 416528

**TOCKINGTON LUNCHEON GROUP** will not meet in December

**COFFEE MORNINGS:** Sats 10.30 - 12 noon in Olveston Methodist Hall

**PRAYER MEETINGS** Tuesdays 9.00-10.00 in Olveston Methodist Church.

**HOUSE GROUP** Holy Habits' House Group meeting 12<sup>th</sup> Dec. at 6 Manor Close Tockington at 10.30am

**THE OLVESTON COMPUTER CLINIC** Olveston Methodist Hall

Monday 2-4pm Wednesday 10-12 Friday 7-9pm

Ring 07833 354672 or 01957 433091 for further information.

**CONTACT:** Rev Pete Brazier Tel 01454 418176,

e-mail [pete@thebigfishcafe.co.uk](mailto:pete@thebigfishcafe.co.uk)



## **THE VINE House of Prayer**

Pilning Street, Awkley BS35 4HL

We meet in a relaxed atmosphere seeking, with God's help, to find ways to influence the world in which we live through prayer and relevant actions.

Sundays at 10.30am and Mondays and Wednesdays at 7.30pm. We also visit other Churches and events so please check our Notice Board or contact:

**Mike and Barbara Matthews**, tel. **07512 917229** or email:

**thevine\_awkley@hotmail.com**

## **THE OASIS CHURCH, OLD DOWN**

Dec 3	6.30pm	Tony McQueen
Dec 10	6.30pm	J. Gulliford
Dec 17	6.30pm	M. Ogbourne
Dec 19	7pm	Carol Singing at 'The Fox'
Dec 24	11am	Short Morning Service with Stuart Lyall
Dec 31	11am	Short Morning Service with Ceri Morgan-Davies

Each Thurs at 7.30pm Prayer & Praise Time

For further information please contact **Jenny Parfitt** [jennyparfitt@gmail.com](mailto:jennyparfitt@gmail.com)

## **AUST EVANGELICAL CHURCH** Family Worship 11.00am

For more details contact Ann Roberts 632564.

e-mail [ann.roberts@bylanes.co.uk](mailto:ann.roberts@bylanes.co.uk)

## **LITTLETON EVANGELICAL CHURCH**

Evening Worship every Sunday at 6pm for details tel. 413247

## **RC CHURCH OF CHRIST THE KING**, Thornbury -

Sun 8.30am Mass 11.00 Family Mass

Monday-Friday Daily Mass at 10am

Tel 01454 412223 [www.ctlk-thornbury.org.uk](http://www.ctlk-thornbury.org.uk)

## **SOCIETY OF FRIENDS (QUAKERS)**, Thornbury

Meeting for Worship Sundays 10.30-11.30: The Hanover Room, The Chantry, Castle St. Wheelchair accessible. Children welcome with prior notice.

**Local contact:** Roger Howell [rog3er2@gmail.com](mailto:rog3er2@gmail.com) 01454 415035

**National:** [www.quaker.org.uk](http://www.quaker.org.uk) Bristol area: [www.bristolquakers.org.uk](http://www.bristolquakers.org.uk)

# Diary Dates for December 2017

The information given below is believed to be correct as we go to press.

1 <sup>st</sup> Fri	Haven Memory Café Thornbury Carers Support Group Olveston. School Christmas Fair Computer Clinic every week	10.15-11.45 1.00-3.00 3.30-5.30 7.00-9.00pm	URC Chy OS MH
2 <sup>nd</sup> Sat	Coffee Morning Litter Pick	10.30-12.00 1.00pm	MH PH
3 <sup>rd</sup> Sun	Toy Service with Reach Out Puppet Team & collection of new toys for Salvation Army	10am	S+M
4 <sup>th</sup> Mon	Computer Clinic every week Monday Movie	2.00-4.00pm 7.30pm	MH S+M
5 <sup>th</sup> Tue	Friends of Daldry Gardens Coffee morning Tea/Coffee & biscuits 50p. Monthly Raffle	10.30-12.00	DGCL
6 <sup>th</sup> Wed	Computer Clinic every week Table Tennis O.P.H.S. 'Secret Underground Cities'	10.00-12.00 7.00-8.30pm 7.30pm	MH PH OMC
7 <sup>th</sup> Thu	Thornbury Farmers' Market Coffee Shop Olveston Playgroup	9.00-1.30 9.00-12.00 9.30-11.30	OS+ MH
8 <sup>th</sup> Fri	Th. Picture House 'The Crows Egg'	7.30pm	CH
9 <sup>th</sup> Sat	Coffee Morning Coffee Morning Thornbury. Food Fair Castle St /Plain Salvation Army Christmas Concert	10.30-12.00 10.30-12.00 10.00-2pm 7.30pm	AVH MH S+M
12 <sup>th</sup> Tue	Friends of Daldry Gardens Coffee Morning Christmas Draw Memory Café W.I.	10.30-12.00 10.15-11.45 7.30pm	DGCL TMH PH
13 <sup>th</sup> Wed	Beat Surgery Table Tennis Inner Wheel Carol Service	10.30-11.15 7.00-8.30pm 7.00pm	OS+ PH S+M
14 <sup>th</sup> Thu	Coffee Shop Olveston Playgroup Littleton-on Severn Craft Session	9.00-12.00 9.30-11.30 10.00-2pm	OS+ MH LVH
15 <sup>th</sup> Fri	Haven Memory Café	10.15-11.45	URC
16 <sup>th</sup> Sat	Coffee Morning	10.30-12.00	MH
17 <sup>th</sup> Sun	Village Carol Service	6pm	S+M
18 <sup>th</sup> Mon	Monday Movie	7.30pm	S+M

19 <sup>th</sup> Tue	Children's Movie Club Memory Café Friends of Daldry Gardens Special Christmas Coffee Morning	10am 10.15-11.45 10.30-12.00	StM TMH DGCL
20 <sup>th</sup> Wed	Carols on Tockington Green Table Tennis Jazz at the White Hart Olveston	6.30pm 7.00-8.30pm 8.30pm	PH
21 <sup>st</sup> Thu	Thornbury Farmers' Market Coffee Shop	9.00-1.30pm 10.00-12.00	OSt
22 <sup>nd</sup> Fri			
23 <sup>rd</sup> Sat			
24 <sup>th</sup> Sun	Christmas Eve		
25 <sup>th</sup> Mon	Christmas Day		
26 <sup>th</sup> Tue	Boxing Day		
27 <sup>th</sup> Wed			
28 <sup>th</sup> Thu			
29 <sup>th</sup> Fri			
30 <sup>th</sup> Sat			
31 <sup>st</sup> Sun	New Year's Eve		

## Looking ahead to January

5 <sup>th</sup> Jan	Making Space for Wildlife Open Event	10.00-8.00	MH
---------------------	--------------------------------------	------------	----

**KEY:** AC Aust Church; AH – Armstrong Hall; AMC – Alv Meth. Ch.; AMH- Alv Meth. Hall; AP – Alexandra Pavilion; AVH – Aust Village Hall; ; CH – Cossham Hall; Chy – Chantry ;CS Castle Sch. CTK Christ the King DGCL – Daldry Gardens Community Lounge; EVH – Elberton Village Hall; LVH Littleton Village Hall MH – Olv.Meth.Hall; OMC Olv Meth Ch OS – Olv. School; OSt – Olv. Stores; OSH Old Sch. Hall Alm; PH – Olv Parish Hall; StM St Mary's Church, Olv.; StMA Almondsbury Church StMTSt Mary's Thorn TCh Tock Chapel; TBCh - Thornbury Baptist Church; TMH – Thorn. Methodist Hall; ; WR – Wesley Rooms. URC United Reform Ch Th

**Contact details** for any clubs or organisations in the Meeting Point area can be found in the Meeting Point Directory on the community website: [www.olvostonandaust.com](http://www.olvostonandaust.com). If you would like to update your organisation's details, please email: [meetingpointsecretary@olvostonandaust.com](mailto:meetingpointsecretary@olvostonandaust.com)

**Advertisements** Neither Meeting Point, its editor, nor management committee accept any responsibility or give any guarantee in case of any dispute or claim as to quality, condition or delivery of commodities or services advertised in this magazine. It is not to be taken that publication implies recommendation. It is always advisable to check prices when ordering goods or services.

**Views** expressed by contributors are not necessarily those of the editor or Meeting Point magazine.

**Copyright Meeting Point 2017.** Copyright remains with the author(s) and Meeting Point. No part of this publication may be reproduced or transmitted in any form without the prior permission of the copyright owners.

Meeting Point is printed by Motion Printing LTD.



***For local Christmas & New Year Opening Times,  
see the next page...***

## 2017/2018 CHRISTMAS AND NEW YEAR OPENING HOURS

### DECEMBER

### JANUARY

#### LOCAL SHOPS

	THU 21ST	FRI 22ND	SAT 23RD	SUN 24TH	MON 25TH	TUE 26TH	WED 27TH	THU 28TH	FRI 29TH	SAT 30TH	SUN 31ST	MON 1ST	TUE 2ND
Oveston Stores	06.30 - 19.30	06.30 - 19.30	06.30 - 19.30	07.30 - 18.30	Closed	Closed	06.30 - 19.30	06.30 - 19.30	07.30 - 19.30	06.30 - 19.30	07.30 - 18.30	07.30 - 13.00	06.30 - 19.30
Post Office (Lunch from 1 to 2pm)	09.00 - 17.30	09.00 - 17.30	09.00 - 12.30	Closed	Closed	Closed	09.00 - 17.30	09.00 - 17.30	09.00 - 17.30	09.00 - 12.30	Closed	Closed	09.00 - 17.30
Powell's Butcher	08.00 - 12.00	08.00 - 12.00	08.00 - 12.00	08.00 - 12.00	Closed	Closed	Closed	Closed	Closed	Closed	Closed	Closed until 05th Jan 2018	
Perry and Son Butchers, Aveston	07.00 - 17.30	07.00 - 19.00	06.00 - 15.00	Closed	Closed	Closed	Closed	07.00 - 17.30	07.00 - 14.00	07.00 - 14.00	Closed	Closed	08.00 - 13.00
The Crusty Loaf	07.00 - 16.00	07.00 - 16.00	07.00 - 14.00	Closed	Closed	Closed	Closed	Closed	Closed	07.00 - 14.00	Closed	Closed	07.00 - 16.00
Aveston Stores	06.00 - 22.00	06.00 - 22.00	06.00 - 22.00	06.00 - 22.00	09.00 - 18.00	06.00 - 22.00	06.00 - 22.00	06.00 - 22.00	06.00 - 22.00	06.00 - 22.00	06.00 - 22.00	09.00 - 22.00	06.00 - 22.00
Lina's Embroidery	Closed	Closed	Closed	Closed	Closed	Closed	Closed	Closed	Closed	Closed	Closed	Closed	09.00 - 17.00
Old Down Country Park	10.00 - 16.00	10.00 - 16.00	10.00 - 17.00	10.00 - 17.00	Closed	Closed	10.00 - 16.00	10.00 - 16.00	10.00 - 16.00	10.00 - 17.00	10.00 - 17.00	Closed	10.00 - 16.00

#### HAIR AND WELL-BEING

Clean Cut	09.00 - 17.00	09.00 - 18.00	Closed	Closed	Closed	Closed	Closed	09.00 - 17.00	09.00 - 18.00	Closed	Closed	Closed	Closed
Vicarage Farm	09.00 - 18.00	09.00 - 18.00	09.00 - 17.00	Closed	Closed	Closed	Appts. only	09.00 - 18.00	09.00 - 18.00	09.00 - 17.00	Closed	Closed	Appts. only

#### GARAGES

Green Lane Garage*	07.30 - 18.00	07.30 - 18.00	Closed	Closed	Closed	Closed	Closed	Closed	Closed	Closed	Closed	Closed	07.30 - 18.00
AFS Motor Engineers, Eberton Garage	08.30 - 17.00	08.30 - 16.00	Closed	Closed	Closed	Closed	Closed	Closed	Closed	Closed	Closed	Closed	08.30 - 17.00
The MOT Centre, Eberton Garage	06.30 - 17.30	06.30 - 17.30	Closed	Closed	Closed	Closed	06.30 - 13.15	06.30 - 17.30	06.30 - 17.30	Closed	Closed	Closed	06.30 - 19.15

#### COUNCIL SERVICES

Thornbury Leisure Centre	07.15 - 22.00	07.15 - 22.00	07.45 - 20.00	Closed	Closed	Closed	08.00 - 16.00	08.00 - 16.00	08.00 - 16.00	08.00 - 16.00	08.00 - 16.00	Closed	06.15 - 22.00
Thornbury Library	09.30 - 17.30	09.30 - 17.30	09.30 - 12.30	Closed	Closed	Closed	Closed	09.30 - 17.30	09.30 - 17.30	09.30 - 12.30	Closed	Closed	Closed
All 'Sort It' Centres	08.30 - 16.30	08.30 - 16.30	08.30 - 16.30	08.30 - 16.30	Closed	Closed	08.30 - 16.30	08.30 - 16.30	08.30 - 16.30	08.30 - 16.30	08.30 - 16.30	Closed	08.30 - 16.30

#### PHARMACIES

Aveston Pharmacy	09.00 - 18.00	09.00 - 18.00	09.00 - 13.00	Closed	Closed	Closed	09.00 - 18.00	09.00 - 18.00	09.00 - 18.00	09.00 - 13.00	Closed	Closed	09.00 - 18.00
------------------	---------------	---------------	---------------	--------	--------	--------	---------------	---------------	---------------	---------------	--------	--------	---------------

### SUPPORT YOUR LOCAL TRADERS

**NB: TIMES CORRECT AS AT GOING TO PRESS**

\* Green Lane Garage emergency number: 07885 432278

#### EMERGENCY NUMBERS

999 EMERGENCY

112 EMERGENCY NUMBER.

112 WILL WORK ON ANY MOBILE PHONE  
IN MOST PLACES IN THE WORLD

111 NATIONAL NON-EMERGENCY MEDICAL NUMBER

101 NON-EMERGENCY NUMBER FOR THE POLICE  
(15P PER CALL)

