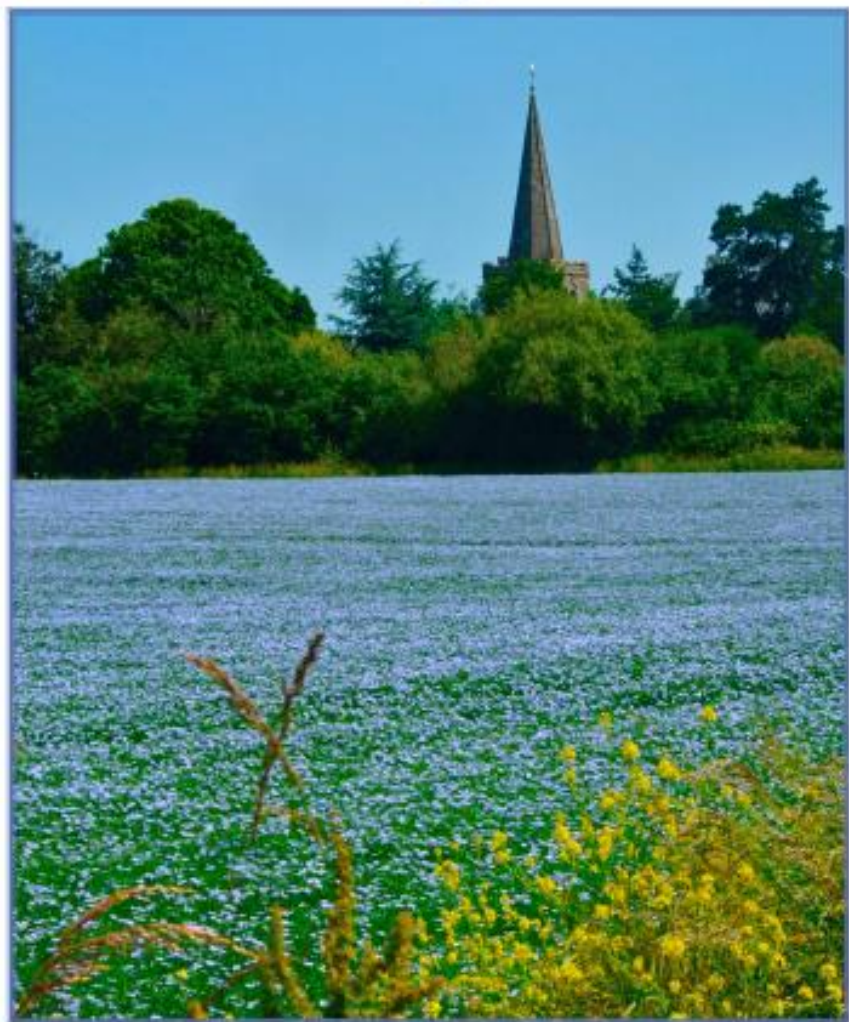
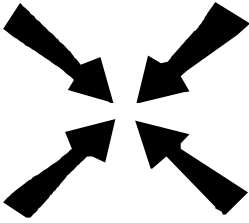


Meeting Point



July 2015



Meeting Point

Volume 39, Number 10, July 2015

The community magazine for the villages of Olveston, Tockington, Old Down, Lower Hazel, Awkley, Ingst, Aust, Elberton and Littleton upon Severn

DEPUTY EDITOR:

Marelin Orr-Ewing
Courtlands,
Olveston
Bristol BS35 4DU
Tel: 01454 610081
*meetingpointeditor@
gmail.com*

ASSISTANT EDITOR:

Angela Williams
Ashlea
Haw Lane
Olveston
Bristol BS35 4EG
Tel 01454 612850
*meetingpointmagazine@
gmail.com*

ADVERTISING:

Nigel Dawes
Cromwell House
The Street,
Olveston
Bristol BS35 4DR
Tel: 01454 201558
julie.dawes@tiscali.co.uk

Publication date
1st of each month

Material for August 2015
to the Editor or Deputy Editor
by 6th JULY 2015.

From the Deputy Editor

In July a couple of years ago we went away on a family holiday to somewhere really hot – only to find that the temperatures here in Olveston were actually higher! It was similar news last July. This year we are staying put and hoping that the sun shines on us and our strawberries ripen when we are around to eat them!

This edition of Meeting Point contains, as usual, details of the many local activities that will be happening in the coming month. The Thornbury Science Festival, for example, is offering a fascinating range of events from July 9th to July 18th. The magazine also contains the first of our series of articles where we will be introducing readers to the nine Olveston Parish Councillors who were elected on May 7th.

Marelin

The cover shows a photograph of a field of linseed in flower at Elberton by Brigitte Grant.

Meeting Point Founded in 1976 by the Anglican and Methodist churches in Olveston, near Bristol

Meeting Point magazine and Meeting Point Directory are online at the
Community Website: www.olvestonandaust.com

News from St Mary's

Roly Bain

Community Service

You may read this after it happens but we're having a 'Community Service' to celebrate the wonderful community in which we live. Invitations have been sent out to all sorts of organisations but you don't need to have an invitation - there's always an open invitation to come to St Mary's! It's on June 28th at 10am and the Bishop of Bristol is our preacher. Wine and canapes to follow! Tea and coffee if you'd prefer!

Beach Ball

Our annual ball at Tockington Manor is on Friday, July 10th. Over 240 people are coming so it's a real 'event of the year'. It's black tie with a splash of the seaside. It's in aid of the Tower Fund, which sadly needs a lot of work, but there will be a donation too to Headway, the Brain Injury Association.

BCO Sinfonietta

This annual concert from The Bristol Concert Orchestra's Sinfonietta is an increasingly popular event and a highlight in the church's musical year. It's on July 18th at 7.30pm. Tickets remain at £7.50 and are available from June Robbins on 617491 or the Olveston Stores.

Bridge to Gautampuri

I'm delighted to report that at the time of writing (the beginning of June) we have reached our target of £15,000 to build a multi-purpose health and education centre in the slums of Delhi, and that we've done it in seven months. Thank you for your amazing generosity. The money from Olveston Primary School is still to come, but we also now have an anonymous donor prepared to pay for a third storey for the building, and they will make up the difference. So we've actually raised £20,000! God is good! And so are you. If you want an update on our last big appeal for eye clinics, Bryan Pill, a pilot from MAF, will be with us on July 5th at 10am.

Olveston Proms

Olveston School Field, 6pm- 8pm, Friday 3rd July

Why don't you bring a picnic and join us for this exciting celebration of musical talent from pupils at the school?

It would be great to see you there.

A Thank You from Nottingham

Meeting Point has received a Thank You card from a couple who were visiting Olveston over the May Day Bank Holiday weekend: *Thanks to all the people in Olveston who helped us out over the weekend of 1st – 3rd May when our car broke down.....we walked to the local pub and explained our situation, no food, but Gary came to our rescue with Cornish pasties and pies which were delicious, thanks. The bar staff were very helpful, we really enjoyed our evenings there and will certainly return.*

Dave and Elaine, Nottingham.

1st Olveston Brownie Pack Holiday

Friday 1st May - When we arrived at Badminton Village we went on a walk to get to the cottage. We got put into new 'sixes', mine was the 'Aliens'. We then built dens in the woods in our 'sixes', ours was epic!! Next we went inside to have tea – I had jacket potato and baked beans. In the evening we sang songs by the campfire and went on a midnight walk to find some glow sticks!

Saturday 2nd May - In the morning Aliens made breakfast. We got dressed and went outside to finish our dens. Ours had a garden, with a vegetable patch and a fire. Then we made a camp fire and toasted marsh mallows, chocolate bananas and popped popcorn. Later we cooked camp doughnuts, they were really nice, mine had chocolate spread in but some people chose to put jam in their doughnuts. After tea we sang songs round the camp fire and finally we went to bed.

Sunday 3rd May - Today we had breakfast and then went on a walk to where Badminton Horse Trials were set up, I jumped in puddles on the way. We had a picnic lunch there. When we got back we had a nice play in the woods. Next we went to pack our bags; I could not find my slippers! After this we made some (Sheriff Badge) star cookies and (Wheezy) penguins out of a sock filled with rice. Finally we had tea and said goodbye to Badminton.

Written by Leah, Olivia, Laura, Rebekah and Evie

Special Event Reminder!

Monday 6th July 2015 from 9.0am-11.30am

St Mary's Church, Almondsbury in aid of St Peter's Hospice.

Come for coffee or tea and cake. There will be a 'Bring and Buy' sale of

homemade cakes. All welcome. Details from Jenny Garrigan 01454 613313

Fun Dog Show and Family Fair - for all the family and the dog!

Sunday 16th August 2015 10am

Avon Riding Centre, Kings Weston Road, Henbury, Bristol BS10 7QT
(opposite Blaise Castle Café car park). Parking available at the Riding Centre.



Adults 50p including programme, children free.

Pedigree and Novelty classes £1 per class or £5 for as many as you like. Prizes and rosettes to 5th place! Pedigree judging starts 10.45am.

Plus...lots of kiddies' activities & face painting, craft & doggy stalls, meet the Dog Rescuers, Have-a-Go Agility, Fastest Recall, big BBQ, food

& refreshments,.

Please come and support us. Email: fossdogshow@hotmail.co.uk.
www.fosgs.com on Facebook 'Friends of Southglos Strays' or Julia Deane (eve) 07768 285009

Cancer Research UK Open Gardens

Sunday 19th July 2pm to 6pm.

Once again, and for the 16th year, Thornbury and District Cancer Research UK Committee are holding "Open Gardens", which is their major fundraising event of the year. This year there will be two gardens in Tythrington, three in Alveston and two in Elberton and a free bus service will be running between the various locations. Just look for the yellow signs which will guide you to the participating gardens.

Entrance £5 per person, payable at any of the Gardens.

Teas will be available for purchase at one of the participating gardens.

Please do support us by attending and enjoying a wonderful afternoon, with all monies raised going direct to Cancer Research UK.

For further information please contact Pam on 01454 416941.

Olveston & Tockington W.I.

The Gareth Malone Experience. June 9th

Jane Prendergast and Mandy Butler gave an interesting and amusing account of their involvement in the formation of The Royal Mail Choir in Bristol. The choir was formed for a television programme, to demonstrate how Gareth Malone first auditioned singers and then brought them together for a competition for workplace choirs. Both Jane and Mandy were very new to singing but they auditioned, with some trepidation, in front of television cameras. To their surprise they were among 24 people working for The Royal Mail in Bristol who were chosen for the choir. The following weeks were spent practising and learning a selection of songs under the direction of Gareth and the Musical Director, David Ogden. The actual competition was televised; their choir reached the final but lost to Severn Trent Water.

Since the event the choir has stayed together and they perform in many locations for Royal Mail occasions and for local events. They do this in their own time and in time given to them by the organisation. Any money raised is donated to the Royal Mail charity, which for the last two years has been Prostate Research and now is The Stroke Association. To date the choir has raised £50,000. An enlightening and entertaining evening was enjoyed by all

Our next meeting on Tuesday July 14th at 7.30pm, will be held at the Parish Hall. Susan Marshfield will be presenting 'Oh yes, I remember it well', entertaining and amusing anecdotes from her interesting life. Guests are very welcome to join us.

Be Prepared - To Party with Us

Sunday 5th July 2-4pm at the Scout Hut in Old Down

Calling all past Scouts and Leaders - that's anyone who has been a Beaver, Cub, Scout or Explorer, or been a Leader or helper during the last 100 years with 1st Olveston Scout Group... we need you to come and celebrate with us.

The 5th July sees the end of our 100th anniversary year, so what better way to celebrate than with a party! If you have been part of Scouting with our unit at any time, then please take this as your invitation to join us for an afternoon of fun and celebration.

There will be good ol' Scouting fun - campfires, cooking, shelter building, rocket making, games, sports, skills tests, afternoon tea and cake!

Come and see if you can light a fire quicker than a Beaver Scout. Do you still know how to tie a sheepshank? Did you dib, dib, dib, dob, dob, dob?

We need your stories, your photos, your memories, we need you - so please get in touch.

Speak to any of our leaders to claim your party invite or... email nikki@beavers.olveston.com or ring 01454 614099 to be put on the guest list.

If you would like to come along and see what we have been doing all these years or what Scouting has to offer you, your son or daughter, then just get in touch.

Free - Live - Local - and in the Pub



That describes the music in the White Hart, Olveston on the first Thursday of every month...

As a community we are at our best when we get together, so why

not come along and spend the evening in the company of friends, drinking a glass or two, in the local pub and listen to some of the best musical talent in our area.

Each first Thursday an ever expanding group of musicians turn up to play and sing in a variety of styles from blues to folk, contemporary chart music to some good old sing along favourites. Some of our budding young talent share the stage with their contemporaries to present an evening full of variety and style... and what's more, it's free!

If you are a bedroom musician or an up and coming young talent looking for somewhere to try out your performance style then turn up and join in - there's always an open mic.

So my dears, have an evening away from the TV, come along with some friends or on your own (it's a small place, you are bound to know someone there) and join us at the next open mic in the lounge bar at the White Hart - from around 8.30pm 'til late, you just wander in when you want.

Don't forget... it's free, live and local... oh and it's in the pub!

If you want to know more, contact Hamish on 01454 610081 or Noel on 01454 614099

Yours faithfully

David Pole

It's not very often that I get the last word, but in this instance I'm fairly confident because this is my last ever contribution to Meeting Point before we retire and move to our new home in the centre of Bath. It will be almost 26 years since we came here to Severnside with our (then) young family, and we are really looking forward to spending some time together after so many years of evenings and weekends filled with commitments.


I've really loved being an 'ordinary parish priest', but isn't it curious that we even think of using such a phrase? What on earth could ever be ordinary about the local churches? They're at the very heart of Christian faith and without them there would be nothing but a nice idea. I love the way the Gospel is inflected by the different communities in which it takes root, the way in which the concerns of the community get reflected in prayer and preaching and in music. I've worked in many different settings, from factories to schools and from prisons to mental hospitals and in each place you can see the struggle to find the Good News exactly as it needs to be for those people and in that situation. I'll never forget the foot and mouth outbreak in 2001, when Littleton Church was closed and the village turned out in numbers to pray in the village hall as the vast pyres of slaughtered animals burned in the distance.

In parts of our area the problem is poverty and in others it's affluence. I spent ten years working in Southmead where poverty was widespread and there I often found ingenuity, resilience and hope. But affluence can bring its own problems. Pride, self-sufficiency and ambition can make us isolated and lonely; mistrustful of others and suspicious of engagement, and that's a massive spiritual problem for some.

Parish churches are at their most powerful when they hear the cry of the community they serve and respond as loving servants. They are weakest when they "follow the devices and desires of [their] own hearts". It's been a pleasure and a privilege for the most part to live and work in these diverse communities even if, now and again, it's been a bit of a curate's egg ('good in parts my Lord'); so thanks to all of you for your patience, encouragement and support over the years.

Casting for Annie!



You're never fully dressed without
a smile' 

The Parish Players will be presenting "Annie" from February 10th – 13th 2016 (half term week). The show is based on "Little Orphan Annie", a daily newspaper comic strip created by Harold Gray in 1924 in New York. The series became very popular and went on to inspire a radio show in

1930, a film in 1932 & 1938 before opening as a musical on Broadway in 1977.

The show is set against the backdrop of the Great Depression, which was brought about by the Wall Street Crash of 1929 and which was probably at its worst in 1932, when the musical opens.

Casting for the iconic role of Annie and her orphan friends (only girls this year) begins on **Sunday September 6th & 13th** at 2 pm in the Olveston Methodist Church, with auditions being held on Monday Sept 28th in the Parish Hall.

The adult Company rehearsals start on **Monday September 14th** and continue on Mondays & Thursdays as needed. The young people will rehearse on Sundays, dates to be finalised, and will join up with the main cast in December in the early evening.

New members will be very welcome for this feel good family show. The Company are also interested in any friendly dogs who might be available to play 'Sandy', Annie & he adopt each other when she escapes from the orphanage.

Please contact Linda Evans for full details on 01454 413887

'I don't need anything but you'



'Tomorrow'



Stepping Stones News

Thank you to everyone who supported our Open/Fun day in aid of 'Make a Wish'. We raised £320 and a great morning was had by all. For those of you who couldn't make it here's a little bit about us:

We are a small friendly pre-school in Elberton who offer "attentive, individual, one to one care in an environment where every child is heard" (parent quote). We offer an excellent range of activities and are now taking bookings for September.

Our outside environment is second to none. The old walled orchard provides an excellent setting for our beautiful enclosed garden. Here the children can play and learn in the well-equipped space whilst still appreciating the peace and tranquillity of nature.

The garden includes a large wooden climbing frame and a smaller climbing frame for our younger children. The mud kitchen, digging patch and sand pit provide ample opportunity for imaginative play and the musical instruments and outdoor easel help creative development. There is also a maths station, a sensory garden and a lovely wooden play house. The surrounding woods enable us to offer the children a variety of safe, stimulating challenges and every Wednesday we run a forest session.

You are welcome to visit any time to meet our highly qualified staff team and allow your child to experience for themselves our exceptional outdoor learning environment. Please visit our website at www.steppingstoneselberton.co.uk or for more information phone Gill Powell on 07853 173221.

Through the Keyhole

A Museum-led Summer Walk, Wednesday 15 July, 6.30pm

On an evening in mid-July, museum volunteers will be leading a Thornbury town centre walk called '**Through the Keyhole: Who Lived in a House Like This?**'

In a gentle stroll, with many pauses, we will be telling the stories of many colourful characters who have lived and worked in our market town. We start from the Museum in Chapel Street at 6.30pm and the walk will take one and a half to two hours. No dogs please, except for guide dogs.

Tickets cost £3 for adults (free for accompanied children of 10 and over) and should be booked in advance from the Museum.



Museum opening times are Tuesday to Friday 1-4pm, Saturday 10am-4pm.
Tel: 01454 857774 or email: enquiries@thornburymuseum.org.uk. See our new website for further information: www.thornburymuseum.org.uk

Police Report

PCSO Kelly Dimery

There were 14 reported crimes for June:-

Theft of pedal cycle from Washingpool Hill.
Electrical tools stolen from a vehicle in Passage Road, Aust.
Motocross bike stolen from an outbuilding in Littleton.
Theft of a trailer from Washingpool Hill.
Theft of a pump from a field in Redham Lane.
Theft of a trailer from Main Road, Aust.
Motorbike stolen from an outbuilding in Moor Lane, Tockington.
4 x pedal cycles stolen from a garage in Olveston.
Chainsaw stolen.

Please also be aware that there has been a slight increase in the theft of pedal cycles over the last few months. If you do own such an item then please ensure it is security marked and attach to a ground anchor with an approved device and also register items on www.immobilise.com.

The beat surgery on Wednesday 29th July is cancelled due to operational needs.

The next Safer Stronger Community Group Meeting will be held on Thursday 30th July 2015 at 19:30pm at Olveston Parish Hall, Upper Tockington Road.

For emergencies please dial 999
To report an incident or crime please dial 101
PCSO 9317 Kelly Dimery 07889659691



A final reminder about the Thornbury Carnival - which will be taking place on Saturday July 4th.

The Parade starts at Castle School at 10.30am and will be led by The Band and Bugles of the Rifles (Bristol's own Infantry Regiment). The Carnival Field will open at 12.00 noon until 5.30pm with three performance stages, a Field Gun competition run by the Armed Services and over 100 stalls run by businesses, volunteer groups and charities, clubs and individuals. There will be food and drink to suit all tastes and much, much more.

Movies at St Mary's: July



At St Mary's Olveston we show films for 'grown-ups of all ages' every first and third Monday evening of each month and for 'children of all ages' every Monday morning of the school holidays.

Our Movie Club Summer Programme has just been published. It features a wide range of top-quality films to suit all tastes and you can pick up

copies from just inside the church door. If you are already a Movie Club member, you'll have received your copy by email.

All welcome to all the shows. There is no need to book and admission is free, although a **donation** at the end towards expenses is always appreciated. If you have any queries or would like to know more, please contact me by email (address below) or phone me on 613279.

There will be FOUR Movie Club films in July:

MONDAY MOVIES (*Recent releases and ever-popular classics*)

Mon 6th July at 7.30pm: This multi-Award winning film tells the extraordinary and uplifting story of one of the world's greatest living minds, and of two people defying the steepest of odds through love. (2014, Cert PG)

MONDAY MOVIES EXTRA (*Quality 'non-mainstream' films*)

Mon 20th July at 7.30pm: A diverting and entertaining account of one man's attempt to solve one of the greatest mysteries in art: how did Dutch Master Johannes Vermeer manage to paint so photo-realistically? (2013, Cert 12)

CHILDREN'S MOVIE CLUB (*Every Monday morning in the hols*)

Mon 20th July: Aardman's latest stop-motion animated feature is funny, endearing and a 'shear' delight. Adults will love it too. (2015, Cert U)

Mon 27th July: Enter the land of Tinker Bell and her fairy friends. Sweet and fun and should enchant the little ones. (2008, Cert U)

Refreshments available at all the shows (plus licensed bar in the evenings).

For copyright reasons we can't name the films here, but if you **join the Movie Club** we'll send you titles and full details by email. It costs nothing to join – just email me at trevoranderson@btinternet.com.

CAR PARKING

Regulars will know that it can sometimes be difficult to find a parking space close to the church. Should this be the case for you, we recommend you turn into Elberton Road (just past the church) and park in the lay-by immediately on your left, near the school.

Olveston Parish Matters

Richard Rogers (olvestonpc@gmail.com)

At the Olveston Annual Parish Assembly held on Tuesday 5th May, our South Glos Councillor, Matthew Riddle paid tribute on the retirement of June Lyons and Irene Reid.

The Parish Council would also like to thank Jamie Mayes who left the Council at the recent Parish Elections. Jamie was a Councillor for two years, and in that time looked after the Tockington play area; represented Tockington's interest on the Parish Council as well as the Scouts; helped form the Aust Verge Parking Area; and will be best remembered for the amount of time and effort he donated renovating the signage around the village. Jamie's 'can do attitude' was much appreciated by other Councillors and we will endeavour to complete the projects he began.

At the AGM on the 26th May 2015, John Hughes was elected Chairman of Olveston Parish Council, with Richard Panes as his Vice Chairman. John has been the Chairman of the Rec & Leisure Committee for a number of years and a Vice Chairman of the Parish Council since 2012. Richard Panes has been on the Council since May 2013 and also succeeds John as Chairman of the Rec & Leisure Committee. Sue Hunter was elected as Chairman of the Planning Committee. A full list of responsibilities and contact details are published on the www.olveston.com website and the Parish notice boards.

Get to know your Parish Councillors

Pat Thirkettle

Over the next three editions of Meeting Point, all nine Olveston Parish councillors will be profiled to give Parishioners the chance to get to know something about them and the responsibilities they have taken on. This month we are introduced to Adrian Baxter, Richard Panes (Vice Chairman) and Sue Hunter.

Adrian Baxter

Adrian has lived in Olveston since 1997. He is married to Joh, who is involved in and supports various community activities; they have two young children who attend pre-school and school. He has worked in the IT industry for twenty four years and is currently self-employed. He coordinates the Speedwatch Group, a voluntary body set up with the blessing of the Parish Council that reports to Avon and Somerset Constabulary. They are trying to raise the



profile of this group; there are fifteen spots around the Parish which are randomly tested, and many motorists are exceeding 36mph. He coordinates the Computer Clinic in the Methodist Hall each week, and is Parish Council rep on the Vision Group. The group now meets every two months and are working to help implement recommendations, one of which is re printing the footpath booklet and providing footpath boards around the parish.

Adrian foresees that there are challenging times ahead for Parish Councils, as more and more responsibilities are passed down from District Councils, and thinks it is important to have councillors with a wide range of ages, abilities and backgrounds all working to safeguard the area for the future. Within the Council he has a broad remit to improve their use of technology and communication. He produced the posters and invitations for the Parish Assembly and the upcoming Sports Day and he is producing an on line form for councillors monitoring play areas to help improve efficiency. He is on the Recreation and Leisure Committee, which was recently involved with Historic England (formerly English Heritage) over the war memorial, which, along with others, is being designated a heritage site. There will be a QR barcode close by, which when used will give details on the names of those commemorated.

Adrian stressed that the Parish Council works as a team with equal importance given to each part of its responsibilities. Adrian along with his fellow councillors is hoping to start a 'Councillors Corner', similar to an MP's surgery, on a regular monthly basis at weekends, more details will be released once it is confirmed. *Contact number: 01454 617108*

Richard Panes



Richard was born at Poplar Farm on Pilning Street, attending Olveston Primary School and Thornbury Grammar School before working on the farm for a few years. However he decided farming was not for him, and worked for the Milk Marketing Board until it fragmented; he is still in the milk industry but only till August when he retires. He is married with two daughters and lives in Olveston. He was a Governor of Olveston Primary School, (and was surprised how much they do), and is a Life Member of Old Down Cricket Club. He has always been heavily involved with the Cricket Club and played for the

Football Club. He feels as you get older you think more about how things are done and how you can take everyday things for granted, being on the Parish Council has certainly brought home the good work previous councillors have undertaken and again he was surprised how much responsibility they have.

He is Chair of the Recreation and Leisure Committee, (it's just a coincidence that I picked all three from there this month!). The Queen Alexandra Memorial Pavilion is due for upgrading; the changing rooms need to adhere to FA regulations for young people, (grants will be applied for), and the main body of the hall will hopefully be extended to cater for bigger functions. Richard foresees big changes ahead as South Glos District Council is squeezed for funds; more responsibility will pass down to the Parish Council. Matthew Riddle has said that the District Council will prioritise on the most important core responsibilities and pass on more practical things to the Parish Councils. On that basis the challenges for all the Parish Councils will grow.

Richard is now Vice Chairman of the Parish Council and has overall responsibility for the Sports Clubs. He helped with others to organise the Family Sports Day that took place last month, a joint venture with the Olveston Parish Vision Group, to promote netball, tennis, archery, cricket, football and bowls, all available in our Parish. *Contact number: 01454 618468*

Sue Hunter



Sue moved to Old Down in 1975 when her family were young and she is now a widow with five grandchildren that she sees regularly. She retired as a lecturer and administrator twelve years ago. Since then she worked in the CAB in Yate for six years, was a Foundation Governor of St Mary's School in Thornbury for five years, editor of Meeting Point for two years and has served on the Parish Council for the last two years. She has a large garden to maintain, sings in the church choir, loves sailing and travelling to out of the way countries.

She feels it is important to do something for the community in a voluntary capacity and was persuaded to join the Parish Council. She is Chairman of the Planning Committee that meets twice a month. As we live in a Conservation area any change of use needs permission. The committee deal with over fifty applications a year ranging from new houses and extensions to pruning or felling of trees. Since 2014 the committee has to obtain planning documentation from the Internet and after consideration pass their views to Richard Rodgers, the Parish clerk, who forwards them to the District Council. The Parish Council views are taken into consideration, but the District Council

makes the final decision. Footpaths and environment issues also are the remit of the Planning Committee. Sue says her aim is to continue to keep our villages a pleasant place to live, while adapting to change that is inevitable.
Contact number 01454 412191

Aust Parish Council Matters *Tim Pyper,*

Parish Councillors

David Spratt of Aust was co-opted onto the Council at the May meeting to fill the vacancy that existed after the shortage of candidates at the election.

South Gloucestershire Policies Sites and Places Policies - consultation

I've mentioned this policy this before. This is a document issued by South Gloucestershire to supplement the Core Strategy and to deal with specific issues in the parishes that make up South Gloucestershire.

At present, the whole of the parish is green belt, except for part of the village of Aust which is within a "settlement boundary" – the effect of which is that infilling is allowed within the boundary. The parish council asked South Gloucestershire Council to remove the boundary because there is really no space left for further development, and because what there is should be protected. South Gloucestershire has issued its final proposal for the whole PSP and this includes the removal of the settlement boundary. This is welcome news and, if confirmed, would mean that the village would become green belt with the rest of the parish.

Aust is also mentioned as a possible site for a park and share arrangement, and the site in Sandy Lane which has been occupied by travellers for many years is confirmed as an approved site.

If you wish to see the document, or participate in the consultation, it is at www.consultations.southglos.gov.uk/consult.ti/PSP_ProposedSubmission/consultationHome

But hurry – the consultation closes on 3 July.

Planning matters

The Council considered a number of applications at the June meeting. One was for the construction of a new house in Littleton, a second for the removal of a restriction requiring a "granny annex" to remain as part of a family house (so that it would become a separate home) and the third was for the removal of conditions attached to the existing permission for stabling on the Greenacres site in Aust. All three will be opposed by the parish council.

Completion of Audit

The Council's annual return and accounts have been audited and the accounts and annual return with audit report are available on the parish council pages of the Olveston.com website. The notice of completion of the audit has been displayed on the Elberton notice board.

(austparishcouncil@googlemail.com)

THORNBURY LIBRARY

Carnival Fringe Week Monday 29 June – Friday 3 July

Celebration Fairs and Thornbury Library, at the heart of our community, have teamed up to share a range of Carnival Fringe opportunities for everyone to enjoy. Visit Celebration Fairs for creative inspiration and beautiful, personalised gifts made by local artists and craftspeople and nurture your own creativity at the library, where it's free to join and borrow books. Whatever your interests, reading boosts creativity and new ideas.

Memory Service Drop-In Wednesday 8 July 4.30pm-6.30pm

Are you worried about your memory, or the memory of a relative or friend? Drop in for a chat with staff from the Memory Service (Avon & Wiltshire Mental Health Partnership NHS Trust) who will be at Thornbury Library on Wednesday 8 July from 4.30pm-6.30pm. This is a free service and there is no need to book. Further dates to follow in July and September – please enquire at Thornbury Library.

Summer Reading Challenge 2015

It's all happening at your local library this summer! Record Breakers, Summer Reading Challenge 2015 begins in all South Gloucestershire Libraries on 11 July and runs until 12 September. It's free to join in the fun. Children can discover amazing world records as they read their way through their choice of six books to collect their Record Breakers medal and certificate. Visit any South Gloucestershire Library this summer for children to take part in Record Breakers, Summer Reading Challenge 2015.

More than 7300 children took part in Mythical Maze last summer. One parent said 'The scheme definitely gave my children the inspiration to pick up a book again after several weeks off. Thank you! It helped them to get ready to return to school but without knowing it!'

Libraries are also holding free activities throughout the holiday to help children complete the challenge including the chance to be part of an attempt to set a Guinness Worlds Record title on Saturday 11 July. Visit your local library or log on to www.southglos.gov.uk/libraries to find out more.

Record Breakers is part of Time4Reading, South Gloucestershire Council's year of events to get everyone reading. For more information visit www.southglos.gov.uk/time4reading. For more Record Breakers fun visit www.recordbreakers.org.uk.

Great News for U18s Who Love Reading

With immediate effect, all library members under 18 years of age can place reservations without charge. Wherever and whenever a book catches your interest you can reserve it for free and arrange to collect it from your nearest library. Try it out, either in person at the library or online at www.librarieswest.org.uk or with the free LibrariesWest app on Google Play or App Store. You will need your borrower number and PIN (ask at the library if you don't know what these are).

Like us on facebook www.facebook.com/sgloslibraries to keep up to date with what we are doing; or find us on twitter @southgloslibs.

From the Registers of Olveston and Tockington Methodist Church.

10th June. Funeral Service, followed by burial in St.Mary's Churchyard, of Joan Whitfield.

From the Registers of St Mary's Olveston

26th April Baptism of Sebastian Alexander Palmer-Houlden and Gabriel Louis Coulston Thiery

31st May Baptism of Oliver Enrique son of Richard & Susan Nutton

30th May Wedding of David Wike & Grace Alexander - Scott

30th May Renewal of Marriage Vows Owen & Louise Parcell

26th May Thanksgiving Service for the life of Kathleen Mary Hawkins

150 Club Winners June 2015:

£50 Ian Bradly
£15 Roger Rowen
£ 5 Nigel Dando

Latest £25 Bonus Ball Winners:

23rd May James Green
6th June Alex Grosvenor

Fixtures at The Park June 2015 (1.30 Start):

4th July 2nd XI v Coalpit Heath
11th July 1st XI v Hanham
18th July 2nd XI v Churchways
25th July 1st XI v Dyrham & Hinton

Spectators always welcome! Up the Down!!

Friends of St. Mary's

The prize winners in the June draw, held on 4th June 2015 at the Friends' Committee Meeting were:-

<u>Amount</u>	<u>Number</u>	<u>Name</u>
£150	262	Mrs A R Knight, Olveston
£75	575	Dr E Saunders, Olveston
£25	544	Mrs T Fear, Tockington
£25	354	Mrs J Robbins, Olveston
£25	243	Mr J Mason, Tockington
£20	547	Mr & Mrs W Harries, Olveston
£20	583	Mrs P R Kerrison, Olveston
£20	597	Mr P Haworth, Olveston
£10	250	Mr & Mrs R Williams, Olveston
£10	501	Revd D Bone, Tockington
£10	298	Mrs J Dickens, Aust
£10	490	Mr I J Lyons, Cowhill
£10	274	Mr & Mrs J Croome, Exmouth
£10	398	Mrs G M Crossley, Olveston

If you are not yet a member and wish to join the lottery please telephone Andy Phillips on 01454 614890

Mr Tucker Breaks World Record!

Craig Tucker

Friday 5th June saw Olveston Primary school go tie crazy! The Big Tie Event was the culmination of six months of hard work by the pupils in Year 6 after a seemingly innocuous challenge: Mr Tucker (their teacher) has amassed a large collection of ties throughout his teaching career, which was noticed by his pupils who challenged him to break a world record. He agreed to the challenge on the proviso that they used it as an opportunity to raise as much money for the school as possible. Mr Tucker began researching how he could break the record for most ties worn at once, currently standing at 260, while the pupils set themselves the ambitious fundraising target of £2250, which would provide enough money to buy a class set of iPads. They began organising a family event which was to include free games for children along with a BBQ and a bar. They also started writing letters to celebrities asking them to donate a signed tie, which could then be auctioned off towards the total. Their selfless work saw them raise a staggering £1200 before the event on the 5th had even kicked off through a range of corporate sponsorships.

The actual Big Tie Event was incredibly well-supported, with families from the school and members of the local community attending, as well as CBBC star Ben Shires who travelled down from Manchester. The auction was hugely successful and the pupils' original ambitious target was eclipsed with ties from the likes of David Cameron and Sir David



Attenborough going for over £200 each. The final total promises to be in the region of £3500 which is an amazing testament to their hard work. It is made even more impressive when you consider that the Year 6 children who organised the event won't get to see the fruits of their labour as they

will already be embarking on the next chapter of their learning journey at secondary school before any of the iPads are delivered.

While the amount of money raised is most certainly the headline stealer, readers may also like to know that Mr Tucker was successful in his attempt to break the record and managed to do so by 5, bowing out on 265 ties all around his neck, with a very purple face. Everyone is now eagerly awaiting official verification from Guinness to see whether the record attempt will appear in the next edition of the famous record book!

Thornbury Science Festival 2015

The second Thornbury Science Festival will take place from Thursday, July 9th to Saturday, July 18th.

Full details of the programme, and any alterations or updates will be posted on www.mythornbury.co.uk/sciencefestival

Tickets, priced at £5 - £7 per head can be obtained from the box office in the Town Hall on Tuesdays and Thursdays from June 16th to July 9th or by post from Mr. R. Williams "Ashlea" Haw Lane Olveston BS35 4EG Tel: 01454 612850 or email rodw44x@gmail.com

Healthwatch South Gloucestershire

Healthwatch teams, who are all volunteers, have the right to visit care homes and hospitals to listen to patients, residents and families and make recommendations about how the service might be improved.

Pat Foster is the Manager for Healthwatch South Gloucestershire. She said: "This can sound a bit alarming – Healthwatch volunteers descending on a home or ward to have a look around! But in fact all of volunteers are trained and supported and understand their role very clearly. Their job is to listen and learn, and then feedback to the staff so things can improve."

Kay Hobday is a volunteer on the Enter and View team in South Gloucestershire and has recently written a blog on the Healthwatch website talking of her experiences. She said "I find it very rewarding to be a volunteer for Healthwatch. Being involved in Enter and View means that I can use my experience to make a real difference. There is a real pressure these days on all social care providers to be more efficient; but the key thing is to do this without losing sight of the person you are caring for. In one home I visited recently they had put a small montage of pictures on everyone's door. There were pictures of places and people from the past: one lady I spoke to had a picture of Craven Cottage Football Ground on her door and we immediately started talking about Fulham! Making care personalised is the real challenge – and I hope that Enter and View helps homes do exactly that."

To find out more about volunteering for Healthwatch South Gloucestershire, email volunteering@thecareforum.org.uk or call 0117 9589 363.

Do something worthwhile and help us make a difference in your community!

Alex Hodgson Communications and Marketing Co-ordinator 0117 9589346

Mole in a hole.

Angela Daymond

We've grown up with stories of wonderful Mr Mole in 'Wind in the Willows' and there's the song; 'I am a Mole and I live in hole'. We see their hills often enough, but it's very rare indeed to see one. The best chance is in a dry period when they might surface to munch some vegetation, but usually their life is dedicated to finding worms. They will eat other grubs and even baby mice if they come across a nest. Moles live a life of shift work, usually four hours on then four hours sleep for 24 hours a day. They can cover fourteen metres in an hour – in real life they wouldn't have much time for messing about on boats.

In fact Mole is our only mammal adapted to living permanently underground. The name probably comes from Middle English '*Moldwarp*' meaning 'earth thrower'. They are only about 150 mm long, with glossy silver black coats.

They have shovel shaped front feet adapted to the major digging of tunnels which stretch for hundreds of meters on lots of different levels. A long snout for sniffing out prey, which also plays the part of a sound tube to their internal ears which are behind their shoulder blades! They aren't blind, as some people think, but their eyes are pretty tiny and light sensitive. Their blood has a higher red blood count, to enable them to cope in low oxygen levels.

If worms are abundant, they will store them in a larder, biting the worm's heads off to paralyse them but keep them alive for freshness. Life at the bottom of the food chain is so grim. A mole's life doesn't appeal to me much either though. In the Fens it was believed carrying a moles hands and feet in a bag around your neck, could cure toothache. In other places the blood of a mole was used to treat warts. Thank goodness medicine has moved on a tad.



Image from Clikr.com

Church News

ST MARY THE VIRGIN, OLVESTON

July 5	8am	Holy Communion	Rev Philip Rowe
	10am	Holy Communion	Rev Philip Rowe & Bryan Pill (MAF)
	6pm	Evensong with Choir	Mrs Janet McBride
July 12	8am	Holy Communion (BCP)	Rev David Bone
	10am	Morning Worship with Choir	Rev David Bone
	10am	Breakfast Club	Breakfast Club Team
	6pm	Holy Communion	Rev A Lloyd & Rev R Bain
July 19	8am	Holy Communion	Rev Roly Bain
	10am	Holy Communion with Choir	Rev Philip Rowe
	3.45	Back to Front	Paul Harrod
	6pm	Evensong	Rev David Bone
July 26	8am	Holy Communion (BCP)	Rev David Bone
	10am	Fourth Sunday	Rev R Bain & Mr D. Jones
	6pm	Evensong (BCP) with Choir	Rev Philip Rowe

Information on services correct at time of going to press.

Rev Philip Rowe, 01454 613223; email: office@stmaryssevernside.org.uk

Rev Roly Bain for Baptisms, Marriages & Funerals 01454 616593.

Verger: **Mrs. June Robbins**, 01454 617491

www.stmarysolveston.org.uk/index.html

PRAYER GROUP: Mondays, 2.45pm in the Chancel

WEDNESDAY HOLY COMMUNION: At 9.00am led by the Rev. Roly Bain except 4th Wed when it is at Olveston Methodist Church

Morning Prayer 8.30am daily ex. Wed

CHAPELRY OF ST JOHN, AUST

July 12	5.30	Holy Communion.	Rev. Ann Parker
Jul 26	5.30	Evening Service	Rev. Ann Parker

Focal Minister: **Rev Ann Parker**, 01454 632329

e-mail annatdibley@btinternet.com

Church Wardens: Jon Burnett 633835 & Jenn Dickens 632035

ST MARY DE MALMESBURY, LITTLETON-ON-SEVERN

July 5	9am	Matins	Mrs Tracey Black
July 19	9am	Holy Communion	Rev. Dave Pole

Contact: **Rev. David Pole** 01454 414810; e-mail davepole@me.com

www.alveston.org/alveston/sthelens-church-alveston

ST JOHN THE EVANGELIST, ELBERTON

July 12	9am	Family Service	Sandra Edgerton
July 26	9am	Holy Communion	Rev David Pole

Contact: Rev. David Pole 01454 414810; e-mail davepole@me.com

www.alveston.org/alveston/sthelens-church-alveston

OLVESTON AND TOCKINGTON METHODIST CHURCH

July 5	10am 6pm	Tock.. Ch Tock. Ch..	Morning Worship led by Mrs Rosalie Doyle Evening Worship led by Rev. Henry Lewis St Andrew's congregation will join us
July 12	10am	Olv. Ch	Morning Worship with Holy Communion led by Rev. Pete Brazier
July 19	10am	Olv. Ch.	Morning Worship with Holy Communion led by Rev David Hardy
July 26	10am	Tock..Ch..	Morning Worship led by Mrs Vivienne Lear

NORTHWICK LUNCHEON GROUP: This meets at 12.30pm on Wednesday 8th^h July. To book your lunch please ring 416528

TOCKINGTON LUNCHEON GROUP meets at 12.15pm in the Swan on Thurs 16th July. To book please ring 613241 or 612112

COFFEE MORNINGS: Sats 10.30 - 12 noon in the Olveston Methodist Hall.

PRAYER MEETINGS Tuesdays 9.00-10.00 in Olv. Methodist Church.

HOUSE GROUP Tues 14th July at 10.30am at 7 The Green Olveston

THE OLVESTON COMPUTER CLINIC Olveston Methodist Hall

Monday 2-4pm Wednesday 10-12 Friday 7-9pm

Ring 07833 354672 or 07957 433091 for further information.

CONTACT: Rev Pete Brazier Tel 01454 418176,

e-mail pete@thebigfishcafe.co.uk

THE VINE, AWKLEY

The Vine, Pilning Street, Awkley

We meet in a relaxed, informal manner for worship, prayer & conversational Bible studies incorporating Communion, on Sundays at 10.30am and Mondays and Wednesdays at 7.30pm We also visit other Churches and events so please check our Notice Board or contact .

Mike and Barbara Matthews, tel. 07512 917229 or email:

thevine_awkley@hotmail.com

THE OASIS CHURCH, OLD DOWN

July 5	6.30pm	Paul Ashford
July 12	6.30pm	Ed Stuart
July 19	6.30pm	Ceri Morgan-Davies
July 26	6.30pm	Alan Spencer

Each Thurs at 7.30pm Prayer & PraiseTime

For further information please contact **Ceri Morgan-Davies** 413043

Paul Ashford, 07774 110 814 or email: **Paul@CalebGroup.net**

AUST EVANGELICAL CHURCH Family Worship 11.00am

For more details contact Ann Roberts 632564.

e-mail ann.roberts@bylanes.co.uk

LITTLETON EVANGELICAL CHURCH

Evening Worship every Sunday at 6pm for details tel. 413247

RC CHURCH OF CHRIST THE KING, Thornbury -

Sun 8.30am Mass 11.00 Family Mass

Monday-Friday Daily Mass at 10am

Tel 01454 412223 www.ctlk-thornbury.org.uk

SOCIETY OF FRIENDS (QUAKERS), Thornbury

Meeting for Worship Sundays 10.30-11.30: The Hanover Room, The Chantry, Castle St. Wheelchair accessible. Children welcome with prior notice.

Local contact: Roger Howell at **rogerhowell2@talktalk.net** 01454 294367

National: www.quaker.org.uk Bristol area: www.bristolquakers.org.uk

Diary Dates for July 2015

The information given below is believed to be correct as we go to press.

1 st Wed	Computer Clinic every week Holy Communion at Daldry Gardens	10.00-12.00 2.30pm	MH DGCL
2 nd Thu	Thornbury Farmer's Market (& 16th) Coffee Shop Olveston Toddlers Open Mic. at White Hart	9.00-1.30 9.00-12.00 1.45-3.15 8.30pm	OS+ MH
3 rd Fri	Thornbury Carer's Support group Computer Clinic every week	1-3pm 7-9pm	Chy MH
4 th Sat	Coffee Morning Thornbury Carnival	10.30-12.00 From 10.30	MH
5 th Sun	Bingo every Sun at Sports & Social club	7pm	
6 th Mon	Café Almondsbury Coffee/Cake forSPH Monday Movie Computer Clinic every week	9-11.30 7.30pm 2-4pm	StMA StM MH
7 th Tue	Tockington Toddlers Friends of Daldry Gardens Coffee Morning RBL Womens section- Flower Arranging	9.30-11.30 10.30-12.00 7.30pm	WR DGCL DGCL
8 th Wed	R.B.L. meeting at White Hart	7.30pm	
9 th Thu	Coffee Shop Olveston Toddlers Thornbury. Science Festival-Sat 18 th Thornbury & District Flower Club	9.00-12.00 1.45-3.15 7.30pm	OS+ MH TMH
10 th Fri			
11 th Sat	Coffee Morning Coffee Morning	10.30-12.00 10.30-12.00	AVH MH
13 th Mon	Mobile Library Orchard Rise(also 27 th) Mobile Library Daldry Gardens) Mobile Library Old P.O.- L-O-S	11.10-11.25 11.30-11.50 12.00-12.15	
14 th Tue	Tockington Toddlers Friends of Daldry Gardens Coffee Morning Memory Café W. I. 'Oh Yes! I Remember It Well' Aust Parish Council	9.30-11.30 10.30-12.00 10.15-11.45 7.30pm 7.30pm	WR DGCL TMH PH EVH
15 th Wed	Severn. Vale. Flower Club Members Day Bosom Buddies meeting Swan Thornbury Jazz at the White Hart Olveston	12.00 7.30pm 8.30pm	AH
16 th Thu	Coffee Shop	9.00-12.00	OS+

	Olveston Toddlers	1.45-3.15	MH
18 th Sat	Coffee Morning BCO Sinfonietta	10.30-12.00 7.30pm	MH StM
20 th Mon	Children's Movie Club Monday Movie Extra	10.00 7.30pm	StM StM
21 st Tue	Tockington Toddlers Friends of Daldry Gardens Coffee Morning RBL Womens section Bingo	9.30-11.30 10.30-12.00 7.30pm	WR DGCL DGCL
23 rd Thu	Coffee Shop	10.00-12.00	OST
24 th Fri			
25 th Sat	Coffee Morning Car Boot Sale at Marlwood School	10.30-12.00 1.30-3pm	MH
27 th Mon	Children's Movie Club	10.00	StM
28 th Tue	Tockington Toddlers Friends of Daldry Gardens Coffee Morning Memory Café Olv. Parish Council meeting	9.30-11.30 10.30-12.00 10.15-11.45 7.30pm	WR DGCL TMH AP
30 th Thu	Coffee Shop	10.00-12.00	OST
Looking ahead to August			
31st	Cream Teas on Tockington Green		

KEY: AC Aust Church; AH – Armstrong Hall; AMC – Alveston Methodist Church; AMH- Alveston Methodist Hall; AP – Alexandra Pavilion; AVH – Aust Village Hall; ; CH – Cossham Hall; Chy – Chantry ;CS Castle Sch.CTK Christ the King DGCL – Daldry Gardens Community Lounge; EVH – Elberton Village Hall; LVH Littleton Village Hall MH – Olv.Methodist Hall;OMC Olv Meth Ch OS – Olveston School; OST – Olveston Stores; OV – Olveston Vicarage; PH – Olveston Parish Hall; StM St Mary's Church, Olv.; StMA Almondsbury Church SMH St Mary,s Ch. Hall Thornbury;TCh Tockington Chapel TBCh - Thornbury Baptist Church; TMH – Thorn. Methodist Hall; ; WR – Wesley Rooms.

Contact details for any clubs or organisations in the Meeting Point area can be found in the Meeting Point Directory on the community website: www.olvestonandaust.com. If you would like to update your organisation's details, please email: meetingpointsecretary@olvestonandaust.com

Advertisements Neither Meeting Point, its editor, nor management committee accept any responsibility or give any guarantee in case of any dispute or claim as to quality, condition or delivery of commodities or services advertised in this magazine. It is not to be taken that publication implies recommendation. It is always advisable to check prices when ordering goods or services.

Views expressed by contributors are not necessarily those of the editor or Meeting Point magazine.

Copyright Meeting Point 2015. Copyright remains with the author(s) and Meeting Point. No part of this publication may be reproduced or transmitted in any form without the prior permission of the copyright owners.

Meeting Point is printed by **Bristol Business Centre**.