

Meeting Point



June 2022

TRUE BLUE TAXIS
(OLVESTON)

Local Taxi Company



Honest, Reliable and Safe

Cash or Card Payments



Mobile:

07967 042794

Top-to-Tail Housekeeping

- Professional
- Dependable
- Comprehensive service

**Trading
Standards
Accredited**

**Felina
Contract Cleaning**

01454 201562
07790 050187
cleaning@felina.biz
www.felina.biz



Weddings | Funerals | Bouquets | or just because...

**Beautiful
flowers for any
occasion...**

Our Shop is open Tuesday to
Saturday ~ 9.00am to 5.00pm

Taking walk in and phone orders

Delivering to BS35 and
surrounding areas ~ Tuesday to
Saturday from 9.00am to 5.00pm

Holding socially distanced
meetings for weddings and
memorials should you wish to
discuss plans

Please call for prices or pop into
the Shop in The Arcade,
Thornbury



t: 01454 416111

e: flowers@joliesfleurs.co.uk



**THORNBURY
Chiropractic
CLINIC**

www.thornburychiropractic.co.uk

The Georgian House, 6 The Plain

Chiropractic

Johnatan Williams Msc DC

Carol Williams MSc DC

Acupuncture

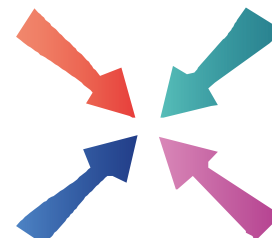
David Sanders Lic Ac. M.B. Ac.C

Massage

Josie Cole MTI

*Open weekdays 8.30am-7pm
and Saturday mornings*

01454 418259



Meeting Point

Volume 46, Number 9, June 2022

The community magazine for the villages of Olveston,
Tockington, Old Down, Lower Hazel, Awkley, Ingst, Aust, Elberton and Littleton upon Severn

EDITOR:

Marelin Orr-Ewing
Courtlands
Olveston
Bristol BS35 4DU
Tel: 01454 610081
[meetingpointeditor@
gmail.com](mailto:meetingpointeditor@gmail.com)

ASSISTANT EDITOR:

Angela Williams
Ashlea
Haw Lane
Olveston
Bristol BS35 4EG
Tel 01454 612850
[meetingpointmagazine@
gmail.com](mailto:meetingpointmagazine@gmail.com)

ADVERTISING:

Bernard Amos
Tel: 01454 620388
[meetingpointadvertising@
gmail.com](mailto:meetingpointadvertising@gmail.com)

Publication date
1st of each month

Material for July 2022
to the Editor or Deputy Editor
by June 6th 2022

From the Editor

June is certainly getting off to a flying start this year with all the villages in the Meeting Point area holding events to celebrate the Queen's Platinum Jubilee. Hopefully we will have fine weather over this very special Bank Holiday weekend. So, whether the activities in 'your' area have been advertised here in Meeting Point, via a Facebook page, an email group or posters and leaflets, we hope you are able to join in and have fun.

I always like to include articles about events that have taken place in the area; this month there is an account of the service held to celebrate the 200th Anniversary of Olveston Methodist Chapel, and a review of a concert in Thornbury which raised funds for Ukraine. Looking forward to the rest of June we have, amongst other things, the Thornbury Arts Festival and a concert in St Mary's, Olveston, featuring local musicians.

Marelin

Meeting Point Founded in 1976 by the Anglican and Methodist churches in Olveston, near Bristol.

**Meeting Point magazine and Meeting Point Directory are online at the
Community Website: www.olvostonandaust.com**

Thornbury Motors

- New and Used car sales
- Servicing, repairs and MOTs on all makes



thornburymotors.co.uk 01454 412535



Grovesend Road
Thornbury
Bristol
BS35 2EF



SAVAGE ASSOCIATES

Accountants·Business Advisors
Corporate & Personal Tax Consultants

The Coach House, Aust Road
Olveston, Bristol BS35 4DE
Tel 01454 610388 Fax 01454 201541

for an initial consultation please contact:
edd.savage@savageassociates.co.uk

Vicarage Farm Holistic Therapy Centre

**Bringing balance back
into your life.
Offering a wide range of
Holistic Treatments.**



Hypnotherapy

A safe and effective treatment: to
remove stress, anxiety, depression
and phobias. Allowing positive and
powerful changes in your life.

Tel 01454 614390
www.vicaragefarm.org



Olveston Parish Council

Pat Savage

Severn Bridge Road Race



The 2022 Road Race took place on Sunday May 8th. Almost one hundred cyclists took part in a race which involved climbing Old Down Hill eleven times! The weather was sunny but not too hot and the event was incident free! Whilst the individual cyclists will not necessarily have had an opportunity to admire the countryside it was still an opportunity for us to showcase our villages.

SpeedWatch Volunteers Needed

In previous years the Council has endeavored to organise a SpeedWatch in the villages, which has unfortunately met with limited success. We are now attempting to launch SpeedWatch 2022. By the time you receive this publication we will already have held a meeting for volunteers at the Parish Hall. Please check the Council Website and the Village Facebooks for future dates. SpeedWatch has become an important part of our continued efforts to deal with traffic-calming in our villages. Taking part is not onerous once the initial training is completed. An hour of your time possibly once a month would

D. YOUNG
GARDEN SERVICES
Fully Qualified with over 16 years Experience
Grass Cutting Hedge Cutting Turfing Fencing
General Landscaping

Tel: 01454 416206 Mob: 07545 131488
Email: d.younggardenservices@hotmail.com

MD Aerials 
Call Michael Dagger
T: 01454 418 341 M: 07817 304 236

Freeview – Freesat – Sky – DAB Aerials

 Wall mounting LCD & Plasma
televisions setting up & tuning

 mike@mdaerials.co.uk
www.mdaerials.co.uk

T. EDWARDS PLANT
Digger and Driver Hire

- Site/garden clearance
- Footings
- Drainage/soakaways
- Driveway preparation
- Stump removal
- Fencing & turfing
- Narrow access equipment



Price or day work t: 07900 372349
t.edwardsplant@gmail.com
CPCS/CITB qualified & insured

Divine
Bathrooms & Wet Rooms

07584 666154
Email: info@divinebathrooms.co.uk
Web: divinebathrooms.co.uk



 **S.J FARR**

KITCHEN FITTING
SERVICES

Mobile: 07915673649

Our Associated Services Include:

- Plumbing
- Wall & Floor Tiling
- Decorating
- Plastering

City & Guilds Qualified

Geoff Gulliver

Carpentry & Joinery, Littleton
ALSO
UPVC Doors, Windows and
Conservatories. For a very
competitive **FREE** estimate

Ring (01454) 414947

be invaluable. We still continue to operate the VAS equipment which is ably managed by Miles Grocott and Tony Turnbull.

Platinum Celebrations

This will be my last reminder to all of you as the Jubilee Celebrations draw near! All households in the villages will have received a very stylish Programme, detailing all events both for Thursday evening and all-day Friday culminating in a Commemorative Church Service at St. Mary's Church, Olveston on Sunday 5th June at 11am. All parishioners are welcome to this very special service.

ORGANISED BY OLVESTON AND TOCKINGTON
METHODIST CHURCH

**JUBILEE TEA ON
THE GREEN**
Saturday 4th June
The Green, Tockington 2.30 - 5pm



Cream teas
and cakes to enjoy
on Tockington Green
or to take away

**YOU
CAN EVEN
PAY BY
CARD!**

All proceeds will go towards the upkeep of our Church buildings in Tockington and Olveston

Our newly extended stylish Thornbury Showroom now offers a Cash & Carry service

We have lots of carpet and vinyl remnants – are you looking for quality flooring at greatly reduced prices?
Why not pop along and see what we have in stock.

We offer FREE home visits, measures and quotes



**LAMINATE | CARPETS | VINYL | ARTIFICIAL GRASS
READY TO TAKE AWAY ON THE DAY**

**Phoenix Flooring
Limited** 

**Unit 15 Hemingway Business Centre, Walker Way,
Thornbury Bristol BS35 3US**

Opening Hours: Mon to Sat 9am – 5pm



**Also at: 5 Chelford Grove, Stoke Lodge, Bristol BS34 6DD
Opening Hours: Mon to Fri 9am – 5pm | Sat 9am – 1pm**

200th Anniversary of Olveston Methodist Chapel

The 200th Anniversary was celebrated joyfully at the Chapel on May 8th with a capacity congregation, added to by local Anglican clergy and parishioners and members of the wider village community. After an introduction and welcome by Trevor Watkins, the service was led by Rev Dr Simon Edwards and the preacher was Rev Dr Leslie Griffiths, the Lord Griffiths of Burry Port, who delivered a very impressive sermon. The organ was played by Dr David Shaw and the hymns were sung with great passion and gusto, as befits a Methodist celebration.

After the service there was a splendid tea with lots of chatter and reconnection between old acquaintances.

During the service an account of the Olveston Methodist Story, written by Jennifer Bone, was read by former minister, Rev Sandy Williams. Jennifer has kindly provided an extract, below:

The Olveston Methodist Story

“The stone above us says 1820, the deeds 1821, the opening services 1822. Eric Garrett’s summary is 1820: start; 1821: money troubles: 1822: done. By rural standards, this building is far larger than most Methodist chapels of the time.

All went well, and a Methodist community also began in Tockington. But in the 1840s, a fierce debate within Methodism became a disastrous split. Nationally the church lost thousands of members. Tockington Methodists disappeared. About 30 members pushed off from Olveston Chapel to form a new Methodist community in Haw Lane.

The story of Methodism nationally became one of splitting into different factions, and then gradually coming together again into a single united church, and Olveston Parish illustrates it uniquely well. In the 1880s the Primitive Methodists built a small chapel on Tockington Green. And when the United Free Methodists, a new group, took over, the Haw Lane group joined them and Tockington Methodists was firmly re-established.

In the 1930s, land immediately adjacent to Olveston chapel became available and the hall was built for the Sunday School. Two scholars laid stones; Arthur Robbins and Mark Staley.

2 Men Went To Mow

All Aspects of Garden Maintenance, Plants & Shrubs Supplied, Garden Rubbish Removal, Fully Insured

Garden and Tree Service Tel: 07956 311901
Local, Friendly and Reliable Email kev@2menwenttomow.co.uk

Tree Surgery (NPTC Qualified)
All Types of Tree Work Undertaken
Contract Grass Cutting
Beds & Borders Maintained
Pruning and Hedge Cutting
Planting

FREE ESTIMATES!

L. & J. GULWELL

Independent Family Funeral Directors

1 Quaker Lane • Thornbury

Tel: (01454) 418779

24hr Service

email: info@funerals.uk.net www.funerals.uk.net

Private Chapels of Rest

COMPANION AND DRIVING SERVICE

Driving Miss Daisy®
We're There For You

Now taking bookings in your area!

- For people of all ages unable to drive but wish to remain independent
- Supported trips to the doctor, hospital, shops, bank, hairdresser, vet, etc.
- Social outings, holidays, help at home and much, much more
- DBS checked and First-Aid trained
- Dementia friendly
- Wheelchair Accessible Vehicle
- Fully Licensed

To book your Daisy
07951 079 558 / 0333 014 6211
northbristol@drivingmissdaisy.co.uk
www.drivingmissdaisy.co.uk

Top quality Nursing and Residential Care

Beech House

Beech House Care Home provides excellence in all aspects of care for all our residents, offering the best in nursing care for the elderly and residential care for people with a diagnosis of dementia.

Our unique care service includes:

- beautiful gardens
- purpose built homes with 24/7 air circulation
- spacious rooms and wide corridors
- top quality chefs
- television with DVD and telephone in each room
- wheelchair provision at no additional cost
- high technology baths and walk-in showers
- regular minibus trips
- programme of interesting and stimulating activities

RECENTLY RATED Outstanding by Care Quality Commission

To arrange a visit, telephone **01454 412266**
For more information see www.bristolcarehomes.co.uk

Bristol Care Homes
providing a unique care service

After World War II the Anglican and Methodist churches nationally planned to unite. It came to nothing, but there was much local co-operation across the country. Here, the churches sponsored a village magazine - "to offer a service to the whole community of which the churches are gladly a part". And so, in 1976, Meeting Point was born, and has been a huge success.

Olveston Methodist continued to thrive – one of its most popular offerings was the lunch club from 1984 to 1999. And the successful strenuous endeavours for Christian Aid week were an annual event.

In 2004 Olveston and Tockington churches united. We have a strong sense of stewardship of our four buildings, a legacy from our predecessors of modest means. We have renovated and maintained them for our own use and for community use; they have been in heavy demand.

We have benefitted hugely from the generous architectural and planning advice of Peter Floyd. But one man alone made it possible, our beloved property steward, Garry Phillips, whom we mourn today. We owe Garry an incalculable debt, and will miss him beyond measure.

In the coming months our Church Council will move on and will welcome conversation with the community. Today, we celebrate 200 years of faithful endeavour on this site."



Pictured, from left to right, are Rev Dr Simon Edwards (Olveston & Tockington Minister), Mr Trevor Watkins (Churchwarden) and Dr Leslie Griffiths (Lord Griffiths of Burry Port).

www.olvestonpreschool.co.uk/pilning-site

Pilning Pre-School

NOW OPEN!

Offering amazing childcare to children aged 2-5 at the heart of our local community.

Pilning Village Hall
Open 9:00am - 3:00pm
Tel: 01454612074

Find us on Facebook



Jubilee Celebrations in Aust

Aust Parish will be joining the national celebrations on **Sunday 5th June**. The event will be held in the Boar's Head field at Aust, and we are hoping for picnic weather. The national Sunday celebration is called 'The Big Jubilee Lunch', so we would like

everyone to bring a picnic lunch. There will also be a BBQ and bottle bar in the field run by the pub.

The main event will be an inter-village 'It's a Knockout' challenge. Teams from Aust, Elberton and Littleton will be competing in some team races and tasks to win a challenge cup.

We have booked 'The Adventure Team' (adventureteamparties.co.uk) for fun for the younger children, aged approximately 4-8 years old. This will include interactive storytelling, imaginative play, comedy and action-packed games and will last for an hour and a quarter. We hope older children can be included in the knockout challenges. There will also be a fancy-dress competition.

The timetable for the afternoon will be as follows:

- 12.00 – Gates open
- 12.30 – Fancy dress competition
- 13.00 – Picnic from about this time.
- 13.30- 14.45 – Children's adventure entertainment
- 14.00-16.00 – It's a Knockout inter-village challenge and winner's cup presentation

First aiders and marshals will be on site throughout the afternoon.

Further details will be given via the village email systems. If you are not already part of your village email group, please contact me on austparishcouncil@gmail.com and I will pass your details on to the relevant village contact. We look forward to seeing you there.

Annual Parish Assembly

The Parish Assembly was held on 12th April at Elberton Village Hall. It was lovely to see so many residents present, especially since the assembly did not take place during 2020 and had to be held online in 2021. The annual assembly is a chance to find out what your Parish Council has been doing over the past year and to discuss any issues of general interest to residents.

The assembly opened with several interesting presentations. Our local beat team from Avon and Somerset Police, PC Will Price and PCSO Paula Perry,

 **PawsPetCare**
...simply for the love of animals

Providing care for your pets
when you need it

Contact Helen for a friendly and reliable service
07493 153520 or enquiries@pawspetcare.com
www.pawspetcare.com

Frontline Martial Arts

Traditional Martial Arts / Taekwondo

Mighty Mites (under 10's): Fridays 4.30-5.15pm at
Juniors (ages 10-13): Mondays 7.15-8.15pm
Adults/over 13's: Mondays 8.15-9.45pm
at Alveston Youth Centre



Tel: 07771 692222
www.frontline-ma.co.uk

THE WHITE HART INN Olveston



Traditional 17th Century English Pub

Catering for Parties and Functions
Wide variety of cask & keg beers
Skittle alley & pool table available
Book now for Skittle Matches
Award winning courtyard garden

Telephone: 01454 612175

SEVERN SIDE TAXIS

SIX SEAT COMFORT
AIR CONDITIONED CAR

AIRPORTS
BUS STATIONS



HOSPITALS
EVENINGS OUT

RING STEVE WARD
07879 601011

FRANCIS

DESIGN & BUILD

Carpentry & Building Services

For all aspects of carpentry

Doors, Skirting, Kitchens, Fencing,
Decking, Stairs, Timber frame etc.

Call Craig on 07970 514409
(or, if busy)

email: craigyoung0308@live.co.uk

gave an informative update of recent policing issues in the parish. Neil Derrick from South Glos. Council (SGC) Trading Standards team told us about rogue traders and gave useful tips on how to spot these and what to do if you suspect that yourself or another resident has been targeted. Tracy Kovacs from Cool Ventures Business Support outlined the free training which they are offering to small business, supported by SGC.

One of our SGC Ward Councillors, Matthew Riddle reported on his and his council's activities. Councillor Catherine Collinson, current chairman of the parish council, outlined what we have been up to over the year. Finally, residents had chance to ask questions or raise any issues of local concern.

For more details on any of the above, please see the Assembly minutes which can be found on the parish council web page:

(olvestonandaust.com/index.php/councils/320-aust-parish-council).

Next Parish Council Meeting

Our next meeting will be held on Tuesday 14th June at 7.30pm in Elberton Village Hall. The agendas for council meetings are posted on the village noticeboards at least five days before the date of the meeting and are also available on the council's web page. Residents are very welcome to attend. Emma Pattullo, Parish Clerk, 01454 837271 austparishcouncil@gmail.com

Garry Phillips

Les Harper



Once again, we are sad to report the death of one of our past editors. Garry was editor from July 1997 to June 1999, taking over from Bill Morgan and succeeded by Trevor Anderson. He had also done his spell as assistant editor and had been a member of the collating team.

We remember Garry as a diligent editor who played close attention to getting the details right. But most of all we remember him as a thoroughly nice chap who will be missed by all who knew him.

Aside from his work for Meeting Point, Garry was a very active and practical member of the Methodist community. The last time I saw him, just a few months before his death, he was painting the window frames of the Chapel in Olveston.

We send our sympathy to his wife Jane.

Severnside Heating & Plumbing



- Installations
- Servicing
- Repairs

Working locally since 2003. An experienced heating and plumbing engineer. For a no obligation quote please call Mike
Mob: 07554 825813 Tel: 01454 613780



Sockets, Lights, Security Lighting, Landlords Reports, Inspection & Testing, Consumer Units, Electric Heating, Rewires, New Builds, Garden Electrics, Car Charging Points, Solar PV, and More..

Your Local Electrician Richard Corney



01454 633 336
laelectrical.com

Baby and Toddler Music!



Have fun and enjoy music with your child
Meet others and share music as well as a cuppa and maybe cake
Suitable for ages from 0-4 with a supporting adult of any age

10:30am Wednesdays in Severn Beach Village Hall

£2-5 for an hour session dependent on numbers

FFI Contact Janet Harrison janet_harrison@outlook.com or 07562 212435 or turn up to a session



**"The Friendly pub
where you arrive as
our Guest and leave
as our Friend"**

BOARS HEAD AUST

01454 632278

- Your local friendly Village pub
- Open 7 days a week
- Food Served from 12.00pm to 9pm every day
- 1st Friday of the month is Quiz Night
- Breakfast Available
- Chefs Table Food Experience
- Parties Catered for
- Open Log Fires
- Real Ales and Premium drinks available
- 5 star Food Hygiene rating

MAIN ROAD, AUST, BS35 4AX

Old Down Cricket Club

Tony Gardner

150 Club Winners May 2022:

£50 Reg Purchase
£15 John Cryer
£5 Matt Snell

Latest £25 Bonus Ball Winners:

09/04/22 Harry Kitchen
16/04/22 Matt Snell
23/04/22 Simon Higgs

Upcoming Fixtures at The Park (13.00 Start):

21/05/22 1st XI v Bristol CC
28/05/22 2nd XI v Bedminster
04/06/22 1st XI v Long Ashton
11/06/22 2nd XI v BWI Phoenix
18/06/22 1st XI v Stapleton
25/06/22 2nd XI v Old Park CC
02/07/22 1st XI v University Staff

Up the Down!

Friends of St. Mary's

The prize winners in the May draw, held on 5th May 2022 were:

Amount	Number	Name
£150	363	Mrs J Hahn, Olveston
£75	222	Mr T Watkeys, Old Down
£25	587	Mr D Jeckells, Olveston
£25	486	Mrs C Phillpott, Tockington
£25	372	Dr M Wright, Olveston
£25	411	Mr R Lloyd, Tockington
£20	336	Mrs J Harper, Olveston
£20	381	Ms K Chick, Olveston
£20	488	Mrs N Turner, Olveston
£20	176	Mrs D Hedges, Pilning
£10	255	Mrs F Riley, Bitton
£10	496	Mrs E Marsh, Tockington

If you are not yet a member and wish to join the lottery, please telephone Andy Phillips on 01454 614890 or email andisp28@hotmail.co.uk.

motion
motiondesignsprint

Do you know we print the Meeting Point Magazine?

We also print for lots of local clubs, events and businesses.

Based in Severn Beach we offer convenient off-road parking right outside our door!

We print everything from Wedding Stationery to Business Stationery

Our professional design and modern printing techniques have saved time and money for lots of people.

Fast, efficient and professional.

Why not let us print for you?

01454 631289
info@motionprinting.co.uk
www.motionprinting.co.uk

ALMONDSBURY PHYSIOTHERAPY AND SPORTS INJURY CLINIC

Louise Brinson
Chartered Physiotherapist, hpc reg

Almondsbury Surgery, Sundays Hill
Almondsbury, BS32 4DS

Tel: 07786915442
Fax: 014540615745
E-mail: physiolouise@hotmail.co.uk

Also at Aztec Spa Leisure Club

ACE1

Window & Gutter Cleaning

Window Cleaning
Gutter Cleaning & Repair
Fascia & Soffit Cleaning
Conservatory Roof
Solar Panel Cleaning
Power Washing

M: 07590 201264
T: 01454 436162

Gleaming Insurance

Olveston and Tockington

Parish Hall

07780 515317

A great venue for :

- Fitness
- Parties
- Public events
- Music & Dance

Check availability & book online at www.olvostonparishhall.co.uk

"Our newly decorated Hall"





Dan Lewis-Leaver and Pilot Whale Research



On Saturday June 18th, Dan Lewis-Leaver and his band Pilot Whale Research will be playing live at St. Mary's Church, Olveston. Doors open at 7 pm with the evening's entertainment starting at 7.30pm.

Born in Rotherham in South Yorkshire, Dan moved to the southwest in the early 1980s and had keen interest in listening to and playing music. At 17 he joined his brother's band, playing drums, and within two years was writing and recording his own songs

in his bedroom in Rudgeway. Influenced by such bands as The Smiths and The Cure, as well as many lesser-known bands of the early 1990s, Dan developed his own singer-songwriter style and over the last thirty years has written more than 300 songs.

His band, Pilot Whale Research will play the second half of the evening, with the first half being dedicated to his solo performance, with a couple of guest musicians. Dan will play self-penned songs and a selection of cover versions while the band will be playing all original numbers, a blend of folk music with cello and electric guitars.

There will be a donation pot for a local charity on the night, and no charge for entry. *Please note – this event starts earlier than was stated in last month's magazine.*

Jim Hallett

Jim died and was buried during the first lockdown in June 2020. A gathering for family and friends to remember and celebrate Jim's life has been arranged for Saturday 25th June at the White Hart, Olveston, from 3.30pm onwards.

Bristol Carriage Masters

- Religious or non-religious funerals
- Bespoke funerals for burial or cremation
- Fully guaranteed pre-paid funeral plans
- Direct cremations



177 Crow Lane, Henbury, Bristol, BS10 7DR
Telephone: 0117 950 8066
Website: www.bcm-funerals.co.uk
Email: admin@bcm-funerals.co.uk

Windmillcare Homes

— great places to Live



Windmill House

The original, elegant home in a delightful rural setting with 2 acres of beautiful gardens delivering unrivalled care

01454 413818



OSBOURNE COURT

Our brand new purpose-built home providing exceptional specialist dementia care in the heart of the village of Stoke Gifford

0117 944 8700

Residential, Short-term Respite and Day Care available

enquiries@windmillcare.com

or www.windmillcare.com

'Indawes - Outdawes'

Decorating and Home Improvements

Painting | Wall Papering
Floor Laying

Martin Dawes 07720 509653
martin.dawes@live.com

Your advert could be here and reaching 1,500 households

Contact Bernard
meetingpointadvertising@gmail.com

Olveston Art Group

The Olveston Art Group started up in 2021 on a term's trial basis. The group consists of 8 local people, who come together every two weeks to paint. The standard of artist ranges from beginner, for example had lessons prior to the pandemic and still finding their way, but can paint independently using online tutorials as needed, to those who are paid a commission for their work. Most paint in the oil medium.

We are an informal relaxed and social group who paint and talk and offer each other support and advice upon request. We meet at the Olveston Parish Hall currently every other Friday from 2pm to 4pm. We also have a day's landscape workshop set up with a British artist on 18th June 2022, and we are aiming to hold workshops 3 to 4 times a year.

All costs for hall hire are split equally between the group, up front, each term – this keeps costs to a minimum – currently under £3.50 a session. With the workshops, the costs of hall hire and the Artist attending for the day are again split between those that wish to attend for the workshop – this means the costs vary depending upon the number of attendees, but we aim to keep them under £50 pp a day which is very reasonable.

As the trial has been successful, we are now looking for new members who paint in any medium to join the group. Based on the response, we may start meeting weekly. But please note, this is not suitable for complete beginners as there is no regular tuition.

If you are interested in joining us, please contact Sarah Myatt on 07498 719314 for more information.

Olveston and Tockington W.I.

Angela Green

At WI this month we're going to be hearing about a charity which does great work in Malawi in Africa, but which has strong connections to Thornbury. It's a remarkable story. See what you can achieve if you've the determination! We'll also be holding a 'bring and buy' stall, so please bring plants or any home-made goods that you are happy to sell for WI funds.

If you would like to join us, you'll be very welcome - we still have new members arriving every month. We meet in the Parish Hall at 7.30pm on Tuesday 14th June. If you'd like more details, please ring me on 615222.


Tel: 01454 885766
Mob: 07724 166917

Ridge Roofing and Property Maintenance

Roofing ❖ Chimney Repairs ❖ Lead Work
 Guttering ❖ External Painting
 General Maintenance ❖ **FREE Estimates**



D-CR

DOMESTIC APPLIANCES

DOMESTIC APPLIANCE REPAIR SPECIALIST

- WASHING MACHINE
- TUMBLE DRYER
- DISHWASHER
- FRIDGE FREEZER
- COOKER
- HOB OR HOOD

Fast, friendly and efficient service
Sales - Service - Repair

Tel: 01454 850522 - Mobile: 07917441539
Email: d-cr@live.co.uk - Web: www.d-crdomesticappliances.co.uk



EARTHWORKSUK

We offer a range of recycled and quarried products including 6F5, type 1, topsoil and decorative stone. These can be delivered straight to you on site or collected from us at our yard in Grombail. Check out all we can offer you on our website or contact us using the details below.

Skip Hire


Top Soil


Recycled Aggregates


Grab Lorry Hire


Tipper Hire


info@earthworksuk.co.uk www.earthworksuk.co.uk
 Orders Line: 07782472727
 Bristol: 01179 828265 - South Glos: 01454 501037




Lending with Heart and Mind

South Gloucestershire Council fund
 a not-for-profit loan scheme for homeowners
 and landlords*.

We understand the expense of maintaining
 your home and we work with you to take the
 stress out of funding repairs, improvements or
 adaptations.

We see you as an individual, not a credit score.
 Our knowledgeable team of advisers will guide
 you through the process of applying for a home
 improvement loan.

For a no-obligation assessment
 or more information visit
www.lendology.org.uk or call 01823 461099

Heatherton Park Studios, Bradford on Tone, Taunton, TA4 1EU

*subject to eligibility

The White Hart Cribbage Team Wants You!

Jan Winter



Did you know that cribbage dates back to the early 17th century and is the only card game that can legally be played in pubs without local authority permission? It is an unusual card game, admittedly requiring a fair bit of luck in being dealt good cards! The pub version of the game is played in pairs and, although its rules are unlike other card games, it is quite quick to pick up. The basic aim is to score points from pairs,

runs or cards that add up to 15.

Have you ever played cribbage? And if not, would you like to try it? We have a White Hart team in Olveston who play in a local league from September to April on Monday evenings. If you'd like to try the game out, we'll be having some evenings over the summer break from the league when we will be happy to teach people how to play. Or you might just want to play a few games to dredge up those memories if you played a long while ago. We'd love to have some new team members, but if you just want a few games, you won't be committing yourself to anything by coming along.

If you're interested, email janwinterolveston@gmail.com phone 612641 or phone/text 07979 243526. We will arrange times to play informally during the summer and would love you to join us.



Alveston Gardens Association

Alpines Around the Garden with Pam Turner
 Monday 6th June at 7.30pm in Alveston Jubilee Hall

All welcome – Visitors (£3)

LINELA

embroid | print | promote

One place for everything promotional.
Specialising in embroidery,
printing and branded gifts



T Shirt Printing
Sports wear
Work wear
School wear
Promotional Products

Call us: 01454 615300

Email us: sales@linela.co.uk

www.linela.co.uk

BonneFreshClean

Carpet & Upholstery Cleaning Specialists

Love the look and smell of
clean and fresh carpets and
upholstery?

Bonne Fresh Clean brings to
you a professional carpet and
upholstery service that will
leave them sparkling and fresh.

Call for a free
no obligation
quote today!

- Thorough, gentle deep cleaning, no residues
- Child and pet friendly treatments
- Latest industry approved qualification and full insurance



Bonne Fresh - Relax and enjoy beautifully clean
and fresh carpets and upholstery!

T: 01454 436001 M: 07774 908410

W: www.bonnefreshclean.co.uk

44 Townsend Lane, Almondsbury, Bristol, BS32 4EQ

News from St.Mary's



Service Time Change

As from the beginning of June the morning service on
Sunday will now be at 10am (except for June 5th!)
We hope this will suit more people and we look forward
to welcoming you back at 10am.

Jubilee Commemorative Service Sunday June 5th at 11am

Join us for this special service with St Mary's choir and invited musicians.
It will be followed by canapés and drinks. We look forward to seeing you at the
end of a wonderful weekend of celebrations

Summer Soirée Saturday July 9th

We are delighted to be hosting a Summer Soirée at Tockington Manor School
this year!

Welcome drinks at 6.30pm followed by buffet. there will be dancing to Ride the
Edge band.

Tickets £45 Numbers are limited so book your tickets early!

Contact: Debbie 07870557961 or Julia 07966302762

Local Musicians Raise Funds for Ukraine

The highly entertaining and versatile operatic singer Kate Radmilovic Evans
and multi-instrumentalist Nicola Woodward gave a stunning performance to
raise funds for those suffering as a result of the war in Ukraine. To the delight
of a responsive audience, Kate, accompanied by Nicola on the new baby
grand piano in the United Reformed Church in Thornbury, performed a
selection including excerpts from Carmen, Tosca, Gershwin, Debussy and
Strauss.

Kate has years of experience on stage taking more than 30 leading operatic
roles in Germany. Since returning to England she has starred in shows such
as Phantom of the Opera, Crazy for You, Showboat and The Sound of Music
in London's West End. She was able to demonstrate her classic, showtime
and dramatic humour abilities in the varied programme. Her performance of
Gershwin's "Vodka" was full of talented fun. Kate is originally from Alveston
and attended Marlwood School – a true home-grown star to make our local
area proud!



Livewire Electrics
Electrical & Mechanical Solutions



Domestic, Commercial
and Industrial Installations

All electrics for new build, extensions and
alterations to satisfy mandatory Building
Regulations. Landlords safety inspections
Portable Appliance Testing (PAT)

Electrical and electronic service and repair
For 24 hour call-out service available please
call Peter Jones: Tel: 07880 858785

Email: pete.livewire@blueyonder.co.uk

Local number Tel: 01454 613482

Visit our web site at
livewire-electrics.co.uk

Local Man With a Van



**I'm available for small
moving jobs,
rubbish collections
and house clearances.**

www.imeddywaste.co.uk

Please let me know you saw this advert

Call
01454 529 003

Beauty at the Barn

4, Grey Gables, Vicarage Lane, Olveston
For appointments telephone Nicola on
01454 201717



Jessica Manicures
GELeration Nails
Shellac Nails
Jessica Pedicures
Spray Tanning
Waxing
Ear Piercing
Eyelash Perming
Eyebrow Shaping
Eyelash tinting
And more....
Evening appointments available
Gift vouchers available



Olveston & Tockington Tennis Club

"Your local tennis club, next to Olveston Parish
hall"

Make 2022 the year to get back
on court.
Coaching for all ages.

Fabulous clubhouse with changing
facilities, kitchen, TV and table tennis.

Call Martin 07720509653

Everyone welcome



Tel: 07887 652358
Jed's N.E.A.T. Services
(Nose Everything About Technology)



Technology brings us together and makes life easier. But.....

What should you buy?

How does it work?

And what if anything goes wrong?

Phones / laptops / tablets / TV's / Smart home systems. I can.....

- Help you choose what's right for you
 - Teach you how it works
 - Fix existing 'tech' problems

HOME VISITS – VIRTUAL REMOTE ASSISTANCE – PERSONAL SHOPPING

PRICING POLICY – Please pay me what you think is fair – SIMPLE ☺

ABOUT ME

Jed Williams – I'm 16 years old, live locally & have had my own business for over 3 years
Email: me@jedwilliams.co.uk Website: myneat.co.uk Tel: 07887 652358

Nicola is known as a flautist but won an exhibition scholarship and prizes for piano accompaniment at the Royal College of Music coached by Robert Sutherland (accompanist to Maria Callas). Besides piano accompaniment and atmospheric flute solos, Nicola played a medley of her own tunes – Skylark, Gavin Hawkins and the Oldbury Reel on Irish flute and whistles with amazing skill and versatility. Her flute solo "Capernaum", an improvisation, was hauntingly beautiful. She is passionate about opera and in particular loves working with singers! Nicola lives in Rockhampton.



Kate and Nicola have performed for Cancer Research in Bristol and at the Pitshanger Manor Museum in London. It is clear they have a great affinity and a lot of fun working together. The audience was privileged to be treated to a performance of this superb quality and we were able, through the generosity of the performers, to contribute by donation to funds for Ukraine.

The United Reformed Church in Thornbury was filled with glorious voice, music and the rousing applause of an audience left in awe and wonder!

Severnside Songs of Praise

Sunday 19th June 6.00pm St Mary's Vicarage
Garden, Almondsbury.

Everyone is welcome to join us for this
wonderful time of group worship.

Chairs will be provided.

Refreshments will be served afterwards.



XL Plumbing & Heating Solutions Ltd

- General Plumbing
- Boiler Installation, Servicing & Maintenance
- Gas Safety Certificates
- Bathroom Installation & Tiling

Contact Mark Mob: 07738 726803
Email: xlplumbing@hotmail.co.uk
Tel: 01454 549008
Web: www.xlplumbing.co.uk





Delivering the highest standards of homecare in South Gloucestershire for 14 years

Premier Homecare is the leading homecare provider in North Bristol and South Gloucestershire, having cared for over 2,000 families, ensuring they are safe, healthy and looked after

- Short and long term home help
- Flexible hours
- Bespoke care support
- Highly trained and reliable carers
- Personal Care
- From cleaning to 24 hour Live-In care

Inspected and rated
Outstanding ☆
Care Quality Commission

good care guide
★★★★★

Great British Care Awards
2016 WINNER

Call today for help with a loved one

PREMIER HOMECARE
0117 959 2013
www.premier-homecare.com



Catering for any occasion
Private parties, Birthday and Anniversary Celebrations,
Weddings, Funerals, Corporate Events,
Formal Dinners, Shoot Lunches... whatever the occasion

www.el-cuisine.co.uk Please contact Emma 07931952939 info @el-cuisine.co.uk

Tockington Manor School and Nursery
for boys & girls aged 2 - 13

Discover our

- Family approach to education
- Envious Senior School entry
- Year 7 & 8 Pathway Programme
- Wrap-around care
- Small friendly classes
- Excellent facilities





Book your private tour at a time convenient to you
01454 613229

Swift Progress



If you happen to be passing either St Mary's Church or Olveston Parish Hall, please look up, you might be lucky enough to see some new temporary residents in the Parish. We are delighted to report we have been able to install several swift boxes on both the Church and the Hall. Now all we need are some swifts!



The Making Space for Wildlife project is focussing its efforts for now on these incredible but threatened species. Once fledged, Common or European Swifts (*Apus apus*) spend practically their entire life in flight. They feed, sleep, mate and collect nesting material on the wing. The only time a swift stops flying is when it is nesting, which brings us to our new swift boxes in Olveston Parish. Swifts are known to nest in the Parish, there is already an established colony at Olveston School. Working together with the Parish Hall and St Mary's Church GreenForce committee, we have installed four boxes on each building just in time for the arrival of swifts after their incredible migration from Africa. We hope that by providing more nesting sites in our community we will encourage more swifts to move in and call Olveston Parish home, for the summer at least.

Thank you to both Olveston Parish Hall committee and St Mary's Church for allowing the installation of the boxes on its buildings. It's a great example of a community working together to help restore nature, and we hope to see some new feathery residents soon.



The four new swift boxes on the Parish Hall....



and four swift boxes on St Mary's Church.

Making Space for Wildlife is part of the Olveston Parish Council Biodiversity backed and funded initiative.

Natalie Gladstone BSc(Hons) Ost

OSTEOPATH

Back & neck pain, arthritic / joint pain,
sports injuries, pre / post natal, whiplash,
cranial treatments, rehabilitation Pilates.

Tel: 07870 219 249

www.nataliegladstoneosteopath.co.uk

OLD DOWN HILL, TOCKINGTON

Easy parking. Day & evening appointments.
REGISTERED: EXPERIENCED: PROFESSIONAL



Digger and Driver Available
Out-Door Services

A. D. D. PLANT

Groundwork, Digging & Clearing
Turfing, Any outdoor work

Tel: 01454 417372

Mobile: 07866 407683



keeping your garden
beautiful...

ask us about
LAZYLAWN

- LazyLawn - superior artificial grass supply and installation - licensee for Bristol & South Wales
- landscape design and build with 25 years experience
- tree surgery
- garden makeovers
- regular garden maintenance

**Garretts Gardens
and Landscapes**

for Garretts Gardens or Landscapes
t 01454 614111 m 07974 109919
info@garrettslandscapes.co.uk
www.garrettsgardens.co.uk

Come rain or shine,
lisa costa estate
agents have the
experience and
knowledge to take
you smoothly through
the moving process.



lisa costa

RESIDENTIAL SALES & LETTINGS

53 High Street | Thornbury | BS35 2AR
01454 279734 | sales@lisacosta.co.uk | lisacosta.co.uk

Please note: If your property is currently on the market, the terms and conditions of your
Existing agency agreement must be considered before instructing ourselves.

Thornbury Arts Festival

Thornbury Arts Festival will be back this summer after an enforced two-year break, with a mini event aimed at paving the way for a full return next spring. The annual programme of music, comedy, drama and talks was cancelled in both 2020 and 2021 due to the pandemic, with closure of the town's Armstrong Hall - the festival's traditional venue - adding to difficulties facing organisers. But they were determined to plan something for the town and surrounding area for 2022 and have devised a three-day festival of live performances to run from Thursday June 23rd to Saturday June 25th.

Three venues will be used this year, with St Mary's Church, Thornbury, hosting the opening night - a costumed portrayal by Lesley Smith of Anne Boleyn in the Tower of London in the final minutes of her life. Lesley is the curator of Tutbury Castle in Staffordshire, as well as a medical historian. She has appeared in more than 120 TV programmes and is known for her entertaining and informative performances of historical characters. St Mary's will also be an appropriate venue for the show as it stands next to Thornbury Castle, where Anne Boleyn stayed with Henry VIII in 1535 after becoming his second wife.

Making a popular return to the festival on the Friday will be Stringfever - four musicians who combine their musical skill on electric instruments with beatbox, humour and showmanship. The players are all from the same family and mix classical favourites with rock classics and movie themes. They were a hit with their audience when they last appeared at the festival in 2017 and this year the quartet will perform their show in the Castle School.

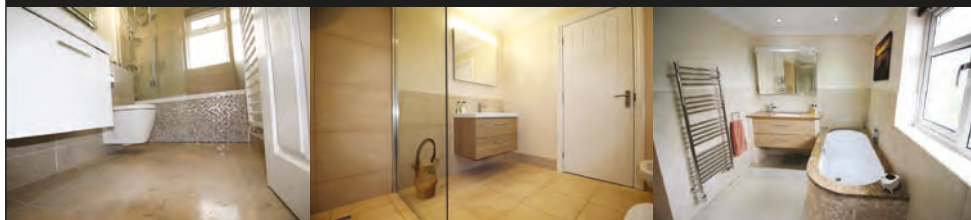
Bringing the festival to a close will be the Cate Cody Quintet, who had been set to perform at the 2020 event before lockdown forced its cancellation. Cate is one of the UK's finest jazz singers, with appearances at the BAFTA Television Awards, for Earl Spencer at Althorp and at the Emirates Stadium, as well as performing at sell-out concerts at jazz festivals and dance events. Her musicians are professionals from the top ranks of British jazz, having worked with the likes of Acker Bilk, George Melly, Georgie Fame, Kenny Ball, Imelda May and Clare Teal. Cate specialises in the 'Great American Songbook' from the 1920s to 1940s and will perform a selection of favourites when she appears at Tytherington Village Hall.

Thornbury Arts Festival normally runs across nine days each spring and the team behind the event hope to get back to normal next year. The festival committee said, "We're really pleased to have been able to put together this programme, albeit a shortened form of the festival, and look forward to welcoming audiences once again."

Paul Whittaker

BATHROOMS & WETROOMS

DESIGN . SUPPLY . INSTALLATION



Tel: 07879 666221 . Website: www.paulwhittakerbathrooms.co.uk

Meanwhile, the festival's popular guided walk has been moved to Sunday, September 18th, with two groups to be taken around 'Hidden Chepstow', ending with a visit to the Severn Princess Ferry, which used to cross the river before the Severn Bridge opened in 1966.

Full details regarding events, venues and times are available on the festival website www.thornburyartsfestival.org.uk together with information on ticket sales. Queries can also be made by email to info@thornburyartsfestival.org.uk or by phoning 07591 030785.

Thornbury Macular and Low Vision Group

We meet on every first Tuesday of the month from 10.30 – 12.30 at the Methodist Church Hall in Castle Court, Thornbury.

For further information call John on 01454 885301

Great Expectations



There is still time – but not much - to get your tickets for the touring production by the Bristol Old Vic Theatre School of their vivid production of Charles Dickens most beloved novel, Great Expectations.

This adaptation by Jo Clifford is teeming with compelling characters in Pip's wry coming of age story. The production is being staged on the super large stage of the Castle School Hall in Thornbury, which has all facilities to ensure a thrilling theatrical experience.

18th June 7.30pm start at The Castle School, Park Road, Thornbury.

Tickets are £18 each to include an interval drink, with a concessionary price of £15 for under 16s.

Please email: AAGThornbury@gmail.com or call 01454 850933 for tickets.



Dunkley's
Chartered Accountants
30 YEAR ANNIVERSARY

LESS THAN 6 MONTHS TO GO...MTD IS COMING FOR ALL VAT REGISTERED BUSINESSES!

TALK TO US ABOUT HOW WE CAN HELP YOUR BUSINESS PREPARE AHEAD OF 1 APRIL 2022

T: 01454 619900 E: ADVICE@DUNKLEYS.ACCOUNTANTS
WOODLANDS GRANGE, WOODLANDS LANE, BRADLEY STOKE, BS32 4JY





Legal advice that brings balance to life

Award winning legal advice to help you navigate change and plan for the future.

gl LAW

Let's talk about you or your business www.gl.law 0117 906 9400

BUSINESS SERVICES · PROPERTY · DISPUTES · FAMILY LAW · WILLS & PROBATE

- All makes servicing and repairs
- Petrol and Diesel MOT Testing
- Tyres, Exhausts and Batteries
- Air Conditioning
- Latest Bosch On-Board Diagnostics
- Vehicle Sales



GREEN LANE GARAGE
OLVESTON

New Road, Olveston, BS35 4DX
01454 202030





Wildflowers

Paul Godwin

Writing at the beginning of May, the wildflowers in our area have become very noticeable as we move through spring into summer. The early spring wildflowers such as celandine, wood anemones and bluebells have started to go over and are being replaced with multitudes of others in our woodlands, fields, verges and in some gardens. There are many wildflowers which we can see in our area, some are familiar and some not so. A wildflower is a flower which grows without the help of people in its natural environment, but we can of course sow wildflower seed in our gardens and create suitable environments for them. What follows are some photographs I have taken locally of wildflowers which are in bloom now and should be in bloom when you read this.

Cuckoo Flower



This is a member of the cabbage family and native to the UK and Europe. It is also known as ladies' smock, milk maids or mayflower. It is called cuckoo flower because it first appears in April when the cuckoo arrives and is in full flower in May and June, thus leading to its other

name, mayflower. It is a common flower in the UK and grows in damp meadows and along the banks of waterways. It is an upright flower on a slight stem which is almost hairless and grows up to 30cms tall although typically smaller than that. Each flower has four petals which can be pink or lilac. The stem leaves are narrow with oval base leaves. A very beautiful flower and easy to identify. Locally I have seen them either as solitary flowers or in small groupings. They stand out well in a wet grassy field or along the rhine banks. This photograph was taken in April 22 on the Common, Olveston.

Red Campion

A herbaceous flowering plant of the UK and northern Europe. It belongs to the pink family. It is also known as red catchfly. It is found along verges and in woodlands and is one of a number of delicate pink flowers which grow on tall stems. It is dioecious meaning that there are separate male and female plants. Campions were once used to treat kidney disease, sores and ulcers. These

gsharchitects



FREE CONSULTATION

For further information please contact us on:

info@gsharchitects.co.uk
www.gsharchitects.co.uk
Almondsbury, Bristol

07780 000220

Build without planning permission

Quality design service from
concept to completion

Planning, construction drawings and
contract administration service
tailored to suit you

Domestic, Commercial ,
and Sustainable Architecture.

Experienced working with
Listed Buildings

Build your dream home in your
garden

Development Advice and Appraisal

3D Visualisation Services

RIBA 

New Passage Cat Kennels

**Large Runs ~ Heated Chalets
Licensed Cattery
in Pilning**

**Tel: 01454 632 456
www.catkennels.co.uk**



Design & Planning

Home Extensions - Change of Use - Floor Plans
Full Planning & Building Regs drawing service
Almondsbury based with successful local projects

contact Julian Lowther for friendly professional advice

t:0117 2591059 julian@jfl-planning.co.uk
m:0789 0179546 www.jfl-planning.co.uk

G.V.R PITCHER & SONS

**The Yard
Haw lane
Olveston
Bristol**



**TEL: 01454 619299
MOB: 07989 208964**

Property Care & Improvements



beginning of May in a hedgerow near Mumbleys.

Common Vetch



A member of the pea family, this is found on farmland, grassland and in verges. It is also known as garden vetch and golden tare and flowers May to September. It is common and widespread and sometimes used as green manure by gardeners as it can fix nitrogen into the soil.

Whilst being often classed as 'weedy' I think the petals of this wildflower are beautiful. It is nearly always amongst other plants as it requires them for support as it shoots tendrils to enable to cling to other growth. Occasionally planted as a food source for cattle, horses and sheep, caterpillars and butterflies and some wild animals, such as deer and rabbits, feed on it. This photograph taken end of April 22 on The Common Olveston.

Cowslip

A beautiful wildflower which has been in serious decline due to loss of its habitat. It's a plant of traditional hay meadows, ancient woodland and hedgerow. Whilst I have felt that there have been more cowslips locally this

CAR - VAN - MINIBUS

**SELF DRIVE - LOW-COST - SHORT/LONG TERM
WIDE VEHICLE SELECTION - CONTRACT HIRE**

- Fully Comprehensive Insurance
- Extra Low Off Peak Rates
- No Hidden Charges
- Breakdown Cover
- Cars
- Minibuses
- Transits
- Sprinters
- Lutons & Tail Lifts

THORNBURY
SELF DRIVE HIRE

Established Over 20 Years

www.tsdhire.co.uk
Mob: 07768 232424
Email: info@tsdhire.co.uk

01454 414111

COOPER ROAD, THORNBURY IND. EST., THORNBURY, BRISTOL BS35 3UP

THORNBURY AUTOBODIES

Car & Commercial Body Repairs

- Crash Repair • Re-Sprays • Dent Repair
- Spray Booth Facilities • Full Body Jigging • Recovery
- Top Standard Of Work
- Fully Insured
- Insurance & Private Work

Courtesy Vehicles • Free Estimates • Over 25 Years Experience

THORNBURY
01454 419985

Email: thornburyautobodies.ps@gmail.com www.thornburyautobodies.co.uk
Cooper Road, Thornbury Industrial Estate, BS35 3UP



year it is not a common sight. This photograph was taken in April 22 in meadows off Bond Lane towards Kington. I have also seen flowers in Woodwell Meadow in Littleton on Severn, along the rhines of Olveston Common and in Sweet Water Lane. It flowers generally until the end of May, so it is possible you may still see some when you read this. The cowslip is a cousin of the primrose and, like the primrose, it has two types of flower and the pollen is transferred between them to create the seeds. It has close associations with folklore including being strewn on church paths at weddings and adorning garlands at May Day. It has many other names such as key of heaven, bunch of keys and herb Peter. Legend states that St Peter dropped the keys to heaven and the first cowslip sprang from where the keys lay. Interestingly the name cowslip actually means 'cow slop' as in 'cow pat'!

The insect in the photograph is a bee fly, which has a very long tongue to enable it to access the nectar.

The second part of this article will appear next month.

WJC

Plumbing & Tiling

Bathroom & Wet Room Design & Installations
Tiling • General Plumbing
Kitchen Installation • Plastering

Billy Cook
WJC Plumbing & Tiling

07748 085 920
wjcpumbing@outlook.com



GARDEN MACHINERY SPECIALISTS
SALES, SERVICE AND SPARES

E-MAIL: themowerdoctor@hotmail.co.uk WEBSITE: www.themowerdoctor.net
ADDRESS: Unit 2-3 The Rearing Unit, Oldbury Lane, Oldbury-On Severn, BS35 1RF
TELEPHONE: 01454 411 701








DEALERS FOR:





PHYSIOTHERAPY
CHIROPRACTIC
PODIATRY
CHIROPODY

"Optimise your Health"

Please Enquire:

Tel: 01454 528608
Email: info@optimuscp.com
Web: optimuscp.com

11 The Plain, Thornbury, BS35 2AG

OLDOWN
TREE SURGEONS

TREE SURGERY AND HEDGE MAINTENANCE

PROFESSIONAL. QUALIFIED. FULLY INSURED.

www.oldowntrees.org

Antony Leicester 07800512408 info@oldowntrees.org



Computer support and solutions for the home and business user.

- PC/laptop repairs
- Virus removal
- Wifi/broadband issues
- Sponsors of Olveston FC

EC COMPUTERS

How can we help? Tel: 01454 281 500 Web: www.eccomputers.co.uk

IT Support/Repairs Office Equipment Print Solutions Telecoms Cyber Security Managed Services Software/Database applications

Carnival Line Up is Announced



Thornbury Carnival's volunteer committee has released the programme for the 2022 event which will place on Friday 1st and Saturday 2nd July.

The weekend will kick off with a new addition to the programme, the aptly named 'Swing in the Park', which will take place on Mundy Playing Fields on the Friday evening from 6pm until 10pm. Liam Williams, Chair of Thornbury Carnival Committee, explained the motivation behind the new event:

"Thornbury Carnival has always had the potential to increase the entertainment offering to the local community. This year we've worked closely with our suppliers and are really pleased to confirm that we'll be able to run a second evening's entertainment to provide something a little bit different. 'Swing in the Park' is very much aimed at providing an evening for family and friends to chat and eat over a drink or two, relax and maybe get dancing to the fantastic music provided by the very talented Thornbury Swing Band!"

Although the committee hopes to provide a fun and relaxing evening to launch this year's carnival weekend, they certainly won't have any time to put their feet up! Thornbury Carnival's 'The Main Event' will run for a record twelve hours on Saturday 1st July with gates opening at 11am and a programme that will run until 11pm. When asked what 'The Main Event' has in store, Liam said:

"Something for everyone, we hope! We're particularly pleased that the Northavon Youth Theatre Group has stepped forward to work with other community groups to run a Community Stage. The Community Stage has always been a huge asset to the event and when NYTG contacted us with their offer of help, we didn't think twice about accepting it!"

In addition to the Community Stage, the Main Stage will feature a range of professional tribute acts including Dolly Parton, Take That, Little Mix and Queen amongst others. It is hoped that people coming to Thornbury Carnival will take advantage of the food and drink concessions as supporting local people, causes and businesses has always been one of the Carnival's main aims. This year, the bar and food concessions will be provided by local businesses and are being co-ordinated by Easter Compton Farm Shop. In addition, attendees will have the chance to purchase products and visit stalls from a wide range of local organisations in the 'Mundy's Village' Liam explained, "Lots of local organisations have had a really tough time in the past

YOUR PC GURU

COMPUTING FOR 'MERE' MORTALS

01454 616365

- Home visits
- Computer Repair
- Phone & Tablet setup
- Home Wireless & Broadband
- Smart Home Tech
- Complete Mac support

www.yourpcguru.co.uk
Technology Advice & Repairs

JC 4x4 Ltd SPECIALIST IN LANDROVER

SERVICE • REPAIR WORK • DIAGNOSTICS • MOTS • OTHER VEHICLES WELCOME

CALL JAMES: 01454 261067 / 07966 086447



Free Quotes

Domestic	Radiant heating
Commercial	Boilers
Breakdowns/ call outs	Radiators
Servicing	Plumbing
Installations	
Warm air heating	LPG, natural gas, oil



www.edgeheatingandplumbing.com info@edgeheatingandplumbing.com

couple of years and so we're delighted to welcome them back to our event as they've always been stalwart supporters in the past."

If you'd like to reserve a space in our car Show 'n' Shine or book a stall pitch, or just find out more about our plans, the best way to keep up-to-date is to follow us at Facebook/ThornburyCarnival or visit our website www.thornburycarnival.co.uk."

Online tickets are now available to purchase through the website and will be available to buy until the day before the event.



Caring Opportunity

(Part-time: Hours to be agreed)

We are looking for a warm, friendly and creative person to add to the care team for a 94 year old lady with dementia living in the Olveston area.

She is mobile, cheerful and independently minded. She loves company and needs support with any tasks involving planning and memory. Interests in practical activities such as baking, crafts, singing and gardening would be very welcome.

Hours to be agreed, but particularly focused on weekends and bank holidays as cover for others in care team.

Please contact Sue Walker on 07933166105 for further information, hourly rates and other details.



Dave Webb

Painter - Decorator

07809 869149

01454 201640

*Reliable, professional, friendly service.
Please ask for your free quotation*



Squire Sweep

A chimney sweep service from
Michael Squire

Tel: 07504 253 467

Email: squiresweep@gmail.com

Visit: www.squiresweep.co.uk

Yours Faithfully

Kate Taylor

Thornbury Quaker Meeting

I don't think of myself as a religious person, I think of myself as a spiritual person. I was first attracted to Quakers because of the emphasis they put on Peace, Truth, Equality and Simplicity, and their belief that there is that of the divine in every single human being. All these things have been important to me for as long as I can remember. They are also inextricably linked. I believe that if the people of the rich countries of the world could learn to live more simply again, as most people did for centuries, there would be more equality, nationally and globally, it would be easier for people to tell the truth and there would be more peace.

When I look at the state of the world, I often think that it is truly tragic, in that the multiple problems we are facing are the inevitable result of a spiritual malaise where for too long rich and powerful individuals, corporations and countries have behaved in an exploitative way towards the planet and towards other people and animals that we share the planet with.

We need a reset, otherwise we risk destroying our wonderful home. The tragedy is that none of what is going on at the moment is inevitable. We have the solutions we need to live sustainably and peacefully on this planet, we need to focus on those solutions, not on creating more problems by carrying on with business as usual, including the business of war.

Greenpeace is calling on the UK Government to urgently introduce a £10bn Emergency Energy package as part of the Chancellor's Autumn budget. This money could be used for insulating homes, making them more energy efficient and boosting ever-cheaper wind and solar power which can exceed the UK's energy needs. This will create jobs, lower energy bills, tackle the climate crisis and reduce our dependence on imported gas. It's a lot of money but it pales into insignificance when compared to the amount we spend on armaments. I know what I would prefer the money to be spent on.

HOLIDAY LET 6 BERTH HOLIDAY HOME		
(2 Bed, 1 Ensuite)		
OTTERTON . BUDLEIGH SALTERTON . EX9 7BX		
Central Heating . Double-Glazed Private Beach . Fishing Trips . Cliff Walks Restaurant . Bar . Live Entertainment Indoor Pool . Kids Club Shop . Cafe . Takeaway		Tony Gardner 07889 727 729

MEDWAY DESIGNS Sewing & Alterations

- Bridal Wear •Alterations
- Evening Wear •Day Wear
- Soft Furnishings & re-upholstery

Ask about sewing lessons

Delivery & Collection Service Available

Lois Coulson
0117 969 1798 /
07950 396064

loiscoulson@ymail.com

14 Watch Elm Close, Bradley Stoke

Call now for a friendly personal service

Cookin' On Gas Ltd



Repairs & Sales of all
domestic appliances:



Gas & Electric Cookers and Hobs
Washing Machines, Dishwashers
Tumble Dryers

www.cookinongas.co.uk
enquires@cookinongasltd.co.uk

Matt Cole
1 Olive Gardens Tel **01454 851545**
Alveston Mob **07715 705670**

MEMORIALS &
MONUMENTS



Supplied & Erected
NEIL VIZARD
01454 419108

BAMFIELD
TREE SERVICES
TREE SURGERY AND LOGS

www.bamfieldtreeservices.co.uk
07761 810483

prestige
event equipment hire

Supplying you with the best equipment to succeed!
CELEBRATIONS & CORPORATE EVENTS

CUTLERY, CHINA, GLASSWARE, LINEN, REFRIGERATION,
COOKING EQUIPMENT, BARBEQUES, FURNITURE & MORE

Fast and Efficient, we stock a wide variety of
equipment covering anything from
WEDDINGS to FESTIVALS.

For a FREE quote please call: 01179613170
info@prestigecateringhire.co.uk
www.prestigecatering.co.uk

HK **Harkell**
Building services

- MAINTENANCE
- BRICKWORK
- ROOFING
- FENCING
- REPAIRS
- PLASTERING
- CARPENTRY
- PATIO ETC

FOR A FREE QUOTATION PLEASE CALL
TEL: 01454 617110 MOBILE: 0787 6682546

Window Cleaning

07976 694744 - 0117 9085794



M. Gray Window Cleaning

Family run business for over 25 years
experience working in the Almondsbury,
Olveston, Aust areas - and nearby.

Email: mgwc1@hotmail.com

Church News

ST MARY the VIRGIN, OLVESTON (Note new morning timings)

June 5	11am 6pm	Commemorative Service, the Queen's Platinum Jubilee Evensong	Rev Ann Lloyd Rev David Moss
June 12	10am 6pm	Morning Prayer Holy Communion	Janet McBride Rev David Moss
June 19	10am 6pm	Morning Prayer Severnside Songs of Praise in Almondsbury Vicarage garden No service at St Mary's	Janet Mc Bride
June 26	10am 6pm	Holy Communion Evening Prayer	Rev Ann Lloyd Paul Harrod

Every Wednesday, Holy Communion, 10am, usually with Rev Ann Lloyd

Contact: Rev David Moss, 01454 415190; email: mossds@gmail.com

CHAPELRY OF ST JOHN, AUST

June 12	10am	Holy Communion	Rev David Bone
June 26	10am	Morning Prayer	Trevor Cook

Contact: Trevor Cook, 01454 618442

Church Wardens: Jenn Dickens 632312 & Clive Roberts 632238

ST MARY DE MALMESBURY, LITTLETON-ON-SEVERN

June 12	9am	Holy Communion	Rev David Moss
June 26	9am	Morning Prayer	Paul Harrod

Contacts: Tracey Black 417660 & Tim Pyper 416422 /07802 419451

ST JOHN THE EVANGELIST, ELBERTON

June 12	9am	Morning Prayer	Judith Heybyrne
June 26	9am	Holy Communion	Rev David Moss

Contacts: Judith Heybyrne 616725 and John Gunnery 413225



**The Cottage, Hortham Lane,
Almondsbury, Bristol BS32 4JP**

Greenside Landscaping can offer a wide range of services including:

**Artificial Grass ~ Brick & Block Driveways
Decking ~ Fencing & Gates
Garden Design ~ Patios & Paths
Planting ~ Ponds & Water Features
Turfing & Seeding ~ Walling**

We pride ourselves on flexibility and we strive to meet our client's requirements and budgets.

www.greenside-landscaping.co.uk
Tel: 01454 250648 Mob: 07980 384321
Email: paulbradburn@hotmail.com



MORAS
Decorating Services

ANDREW MORAS
Quality Painting and Decorating Services

For your **FREE** no obligation quote contact Andrew:

07962069036

✉ **andrew@morasdecorating.co.uk**
www.morasdecorating.co.uk



Tavira
Algarve, Portugal
3 Bed Apartment
*can accommodate up to 8 people

Modern 3-bedroom apartment in picturesque & historic Algarve town. 2-bathrooms including one en-suite, 2-balconies & roof terrace. Fully furnished, sleeps 6-8. Easy walking to thriving town centre. Close to railway station, golf courses & beaches. 30 minutes drive from Faro. Ideal for families or golfers. Tel: 07889 727729 Email: anthonyar@aol.com - www.aminpadtavira.co.uk

**TAVIRA - EAST ALGARVE
EASYJET & RYANAIR
NOW FLYING TO FARO
FROM BRISTOL**



www.bedlambeds.com

- Free local delivery
- Free assembly
- Free disposal of your bed

Divans / Mattresses / Ottoman & Wall beds / Memory foam & latex mattresses / Beds made to measure / Pine, Metal & leather beds

**Open Tuesday to Friday: 9am-5pm
Saturday: 10am-3pm**

Visit our showroom: The Old Post Office
26a Gloucester Road, Rudgeway, Bristol,
BS35 3RY (by the speed camera)

01454 617 277 or 07887 853479



Thornbury Stairlifts
SALES SERVICING & REPAIRS



- New & Re-conditioned Stairlifts & Warranty
- Removals & Relocations
- Free Surveys & Quotes
- No Obligation
- Rentals for Straight Stairs

Independent, Professional & Friendly Advice
Over 24 years practical experience



Independent Stairlift Specialist
01454 413748 07833 318722
www.thornburystairlifts.co.uk

OLVESTON AND TOCKINGTON METHODIST CHURCH

June 5	11am	St Mary's	Commemorative Service for the Queen's Platinum Jubilee
June 12	10am	Olv Ch	Holy Communion with Rev Dr Simon Edwards
June 19	10am	Tock Ch	Morning Worship led by Mrs Rosalie Doyle
June 26	10am	Olv Ch	Morning Worship led by David Head

Contact: Rev Dr Simon Edwards 418176,
simon.edwards@methodist.org.uk

THE VINE HOUSE OF PRAYER, Pilning Street, Awkley BS35 4HL

Meeting at 11am every Sunday and on the 1st and 3rd Wednesdays of each month at 2.30pm.

Contact: Mike and Barbara Matthews, 07512 917229 or email:
thevine_awkley@hotmail.com

THE OASIS CHURCH, OLD DOWN

Services at 6.30pm every Sunday. All are welcome.

Contacts: Jenny Parfitt jennyparfitt@ymail.com & Sue Tett
stett56@hotmail.co.uk

AUST EVANGELICAL and LITTLETON EVANGELICAL CHURCHES

Contact: Danny Bamfield 01454 419324 email danny@thebamfields.co.uk

RC CHURCH OF CHRIST THE KING, Thornbury -

Mass on Sundays at 9.30 and 10.30am

Contact: 01454 412223, www.ctk-thornbury.org.uk

SOCIETY OF FRIENDS (QUAKERS), Thornbury

Contact: Brian Hawkins, hawkinsb863@gmail.com 01454 854867



Diary Dates for June

2 Thursday	Coffee Shop, every Thursday Thornbury Farmers' Market Jubilee Lantern Parade to Tockington	9-12 10-12 Depart 9.30pm	StM StM
3 Friday	Jubilee Parade to the Parish Hall Garden Party, Tockington Manor School field BYO Tea Party, Tockington Manor field Jubilee Barn Dance	Depart 11.30am 1.30 - 7.30 5pm 7.30	StM OPH
4 Saturday	Cream teas on Tockington Green	2.30-5.00	
5 Sunday	Jubilee Commemorative Service	11am	StM
6 Monday	Monday Movies	7.30	StM
7 Tuesday	Over 60's coffee morning, every Tuesday Macular Degeneration & Low Vision Group	7.30 10.30-12.30	DGCL TMH
8 Wednesday	Table Tennis every Wednesday	7pm	OPH
10 Friday	Over 60's Bingo or Quiz, every Friday	2-4	DGCL
13 Monday	Severnvale Flower Club	2pm	SMCH
14 Tuesday	Over 60's coffee morning Thornbury Memory Café Aust Parish Council W.I.	10-12 10.15-11.45 7.30 7.30	DGCL TMH EBH OPH
16 Thursday	Thornbury Farmers' Market	9 - 1.30	
17 Friday	Over 60's Bingo or Quiz	2-4	DGCL
18 Saturday	Music by local band Pilot Whale Research, for charity	7.30	StM
20 Monday	Monday Movies	7.30	StM
21 Tuesday	Over 60's coffee morning	10-12	DGCL
23 Thursday	Thornbury Arts Festival until 25 June		

24 Friday	Over 60's Bingo or Quiz	2-4	DGCL
27 Monday	Severnvale Flower Club	2pm	SMCH
28 Tuesday	Over 60's coffee morning, every Tuesday Thornbury Memory Café Olveston Parish Council	10-12 10.15-11.45 7.30	DGCL TMH OPH
29 Wednesday	Alveston Historical Society,	7.30	AMH
30 Thursday			

KEY: **AMH** - Alveston Methodist Hall, **DGCL** - Daldry Gardens Community Lounge, **EVH** - Elberton Village hall, **OPH** - Olveston Parish Hall, **StM** - St Mary's Church, Olveston, **SMCH** - St Mary Church Hall Thornbury, **TMH** - Thornbury Methodist Church Hall



Olveston Parish Hall

Contact details for any clubs or organisations in the Meeting Point area can be found in the Meeting Point Directory on the community website: www.olvestonandaust.com. If you would like to update your organisation's details, please email: meetingpointsecretary@olvestonandaust.com

Advertisements Neither Meeting Point, its editor, nor management committee accept any responsibility or give any guarantee in case of any dispute or claim as to quality, condition or delivery of commodities or services advertised in this magazine. It is not to be taken that publication implies recommendation. It is always advisable to check prices when ordering goods or services.

Views expressed by contributors are not necessarily those of the editor or Meeting Point magazine
Copyright Meeting Point 2022. Copyright remains with the author(s) and Meeting Point. No part of this publication may be reproduced or transmitted in any form without the prior permission of the copyright owners.

Meeting Point is printed by Motion Printing Ltd.



OLVESTON STORES & POST OFFICE

NOW STOCKING - JON THORNER'S FULL RANGE

NEW COSTA EXPRESS MACHINE IN STORE

HOME DELIVERIES (NO MINIMUM SPEND)

NEWSPAPERS DELIVERED (SMALL CHARGE)

PAYZONE FACILITY FOR BILL PAYMENTS, GAS, AND ELECTRIC TOP UPS

OUR INSTORE POST OFFICE OFFERS A WIDE RANGE OF SERVICES

CAR TAX
BILL PAYMENTS
CURRENCY ORDERS
POSTAGE
A RANGE OF INSURANCES
&
MUCH MORE

01454 612269

olvestonstores@btconnect.com

BONDS *of* THORNBURY

INDEPENDENT ESTATE AGENTS



A truly local independent estate agency with over 40 years of experience and with unrivalled knowledge of the property market within Thornbury and South Gloucestershire.

Our caring sales business is based on our reputation, honesty and integrity.

Please contact: Rowena Moncrieff
for further details...

14 The Plain, Thornbury

Tel No: 01454 858007

www.bondsofthornbury.co.uk

enquiries@bondsofthornbury.co.uk

