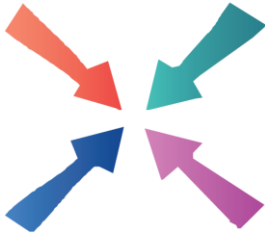


# Meeting Point



March 2019



# Meeting Point

*Volume 43, Number 6, March 2019*

The community magazine for the villages of Olveston, Tockington, Old Down, Lower Hazel, Awkley, Ingst, Aust, Elberton and Littleton upon Severn

## **EDITOR:**

**Marelin Orr-Ewing**  
Courtlands  
Olveston  
Bristol BS35 4DU  
Tel: 01454 610081  
*meetingpointeditor@gmail.com*

## **ASSISTANT EDITOR:**

**Angela Williams**  
Ashlea  
Haw Lane  
Olveston  
Bristol BS35 4EG  
Tel 01454 612850  
*meetingpointmagazine@gmail.com*

## **ADVERTISING:**

**Nigel Dawes**  
Cromwell House  
The Street,  
Olveston  
Bristol BS35 4DR  
Tel: 01454 201558  
*julie.dawes@tiscali.co.uk*

Publication date  
*1st of each month*

Material for April 2019  
to the Editor or Deputy Editor  
by 11<sup>th</sup> March 2019.

## **From the Editor**

As the weather gets brighter and, hopefully, warmer this edition of Meeting Point offers lots of ideas for things to do in March. There are several concerts to attend and, if you like the idea of performing, we have got details of how you could join in and sing in a concert towards the end of the month.

Olveston Parish Hall is the location for many enjoyable village events. This month you could go there to test your general knowledge in a quiz or spend an evening tasting different wines and trying to match them to their descriptions. The W.I. meets there regularly, as does a table tennis club. The Parish Hall is run by a committee of volunteers and an invitation to attend its AGM can be found in the magazine.

An exhibition at Thornbury Library caught my eye – ‘Second World War Stories’ – which looks at the impact of the war on South Gloucestershire. Worth a visit I think.

*Marelin*

The cover is by Les Harper

Meeting Point Founded in 1976 by the Anglican and Methodist churches in Olveston, near Bristol

Meeting Point magazine and Meeting Point Directory are online at the Community Website: [www.olvestonandaust.com](http://www.olvestonandaust.com)

# News from St. Mary's

Debbie Harries



## Lent

The journey to Easter begins on Ash Wednesday, 6<sup>th</sup> March.



is the focus throughout North Severnside. It is an introduction to what Christians believe and how

they make the journey, both together and as individuals. Each Sunday we examine an issue of faith and the likely implication on our living as Christians. Groups will also meet to explore the issues week by week. Please pick up a Flyer in any of the churches with details of the Groups available, both during the daytime and evenings.

## Films in Lent

St Mary's, Olveston, on Mondays 11<sup>th</sup> & 25<sup>th</sup> March and 8<sup>th</sup> April. Biographical accounts of three significant 20<sup>th</sup> Century Christians. These are detailed in the flyer. (See above)

## Giving in Lent

This year is for Incredible Kids, a South Gloucestershire based charity for families with a disabled or disadvantaged child. Do come to a Coffee Morning on Saturday 30<sup>th</sup> March at Alveston Methodist Hall 10.30am to 12noon to give your support.

## Organathon

On Saturday March 16th we are holding an 'Organathon'. Our organist David Shaw will be playing the organ from 9am to 9pm! Please call in and support him throughout the day. Refreshments will be available. Donations welcome towards church funds.

## Fauré's Requiem

This is a reminder about the opportunity to come and sing Fauré's Requiem with us. Practices will be 4pm – 5.30pm on 3rd, 10th 17th March at St. Mary's, Olveston. The concert will be on 24<sup>th</sup> March at 7.30 pm at St. Helen's, Alveston, with a rehearsal beforehand at 5pm.

# From the Registers of St Mary's, Olveston

- 27<sup>th</sup> January     Baptism of Amelia Grace, daughter of Cole and Louisa Skuse
- 27<sup>th</sup> January     Baptism of Zachary Shaun Thomas, son of Cole and Louisa Skuse
- 7<sup>th</sup> February     Funeral of Edward James Woodward, followed by burial in the churchyard.

## Tea and Chat

Do you find it difficult to get out and socialise? Would you like to meet other people for tea and cake once a month? Transport is provided and it's all free.

The March Tea and Chat will be at 2.30pm on Friday March 8th at Rose Lodge, New Road, Olveston.

For details or to request transport if necessary, please telephone Lynn: 01454 612201 or Lesley 01454 613804

## Sarah Lyons

*Pat Thirkettle*

Sarah is the latest recruit to Olveston Post Office. Her grandmother was a Fairchild before she married and Fairchilds are a family steeped in Olveston history. Her great grandparents ran the village shop where Village House stands today, her great uncle Harold Fairchild was the blacksmith next door and many more are buried in Olveston churchyard.

Sarah was born in Milbury Heath and attended Castle School, leaving at eighteen to work as a clerical officer at Bristol Court. She then briefly worked at Hortham Hospital before returning to Bristol Crown Court as Judges' Clerk. This position runs the Court, swearing in the jury, putting the charge to the defendant and drawing up court orders; she loved the job, but gave up working when her first son was born.

Sarah was always interested in farming; she had her own horse and joined Thornbury Young Farmers, becoming the Secretary. Opportunities available were parachute jumping - only once- and dry skiing at Gloucester when she broke her arm and never ventured on the slopes thereafter! She met her

husband Stuart through Young Farmers; he was a member of the Olveston branch, so Sarah moved to join him and they became Chairman and Secretary respectively.



In 1989 Sarah and Stuart entered the 'Great Bread Race'. The wheat was picked at Robert Bernay's Old Down Farm, milled at Dawes in Olveston, baked into bread at Thornbury Bakers then driven on a decorated tractor (Stuart and Sarah also dressed up) to Bristol Cathedral, where they won! They have a lovely photo and ITV filmed them throughout - does anyone remember seeing it?

Sarah and Stuart married in 1991 and the next year they took over Valley Farm, Ingst; Stuart is third generation there and their children will be fourth. Sarah was

pregnant with their son Richard at the time, and their daughters Claire and Beccy followed later.

The farm then ran sheep, milking and beef cattle and poultry and Sarah took up her new life of lambing, milking and delivering eggs. Today she is still feeding new calves and milking but two years ago Sarah started her latest job, working two days a week at Olveston Post Office. She loves getting away from the farm for a bit, meeting new people, and chatting with us all.

When her daughters were Brownies, Sarah used to help and now Claire and Beccy work with Olveston Guides. Richard works on the farm and all the children are Young Farmers, so continuity at Valley Farm is guaranteed and the circle is completed with Sarah working in the Stores, today's successor to her family's original shop.

# Friends of St. Mary's

The prize winners in the February draw, held on 7th February 2019 at the Friends' Committee Meeting were:-

<u>Amount</u>	<u>Number</u>	<u>Name</u>
£150	388	Mrs S Shaw, Olveston
£75	313	Mr & Mrs R Birtle, Olveston
£25	553	Mrs B Kingscott, Almondsbury
£25	599	Mrs J Davies, Olveston
£25	404	Mrs A Knapp, Tockington
£20	233	Mrs G Bowen, Awkley
£20	482	Mrs N Turner, Olveston
£20	471	Mrs J Panes, Olveston
£10	210	Mr J Black, Thornbury
£10	606	Mrs E Marsh, Tockington
£10	551	Mrs D Harries, Olveston
£10	366	Mrs P Halfyard, Edgbaston

If you are not yet a member and wish to join the lottery, please telephone Andy Phillips on 01454 614890.

## Annual Parish Assembly



**Olveston Parish Hall**

**Tuesday 2<sup>nd</sup> April at 7.30pm.**

The Chairman will report on the work which the Council has undertaken throughout the year and state the financial position.

The Parish Assembly is an opportunity for Parishioners to engage with Councillors and express their opinions. The Council will not make a formal presentation this year, which gives those Parishioners who wish to an ample opportunity to showcase any projects which they have undertaken or indeed would like to see undertaken.

Refreshments will be served at the end of the meeting.



# Starting from Scratch: Creating a New Museum at Slimbridge

Wed. 6th March, 7.30 pm. Olveston Methodist Church.



You are probably familiar with Slimbridge, with the Rushy Pen where the wild swans arrive every winter and with the family home of Sir Peter Scott, overlooking the lake. Curator Helen McConnell Simpson has the task of turning the Scott family home into a museum which retains the feel of the place where Peter Scott pursued his many varied interests, and which looks as if the family has just popped out for a while.

In this talk, Helen will share with us how she is going about the task of creating the new museum, due to open in 2020. Come and hear a behind-the-scenes insight into what needs to be considered and how the project is progressing.

All welcome...just turn up. Visitors: £2.

Olveston Parish Historical Society [www.olvoston.com/historical-society](http://www.olvoston.com/historical-society)

## Alveston Gardens Association

The National Garden Scheme and the Gardens of Gloucestershire by Colin Ollie.

Monday 4<sup>th</sup> March 7.30pm Alveston Jubilee Hall.

All welcome. Visitors (£3) Full programme on [www.alveston.org](http://www.alveston.org)





# Oveston Parish Council Matters

*Pat Savage*

## **Council Clerk**

As mentioned in the February edition, Mr Malcolm Evans was appointed Clerk with effect from 1<sup>st</sup> February. Malcolm brings to the post a wealth of both management and commercial skills. He has experience in the leisure sector, having been Managing Director with Brent Walker and is an ex London Wasps rugby player. He headed up the committee which turned Wasps professional. As the football club and the Council embark on what should be an exciting refurbishment of both the Pavilion and changing rooms, he will be an invaluable asset. Welcome, Malcolm!



## **Cycling Road Race**

This race, which was mentioned in last month's article, will not now take place. It *may* be scheduled for next year. Parishioners will be informed when the organisers attend a Council meeting sometime in the Autumn. If anyone feels very strongly about this event, they are invited to contact Malcolm Evans via email: [clerk@olvestonparishcouncil.gov.uk](mailto:clerk@olvestonparishcouncil.gov.uk)

## **Elections**

This is a reminder to all Parishioners that both the Parish and District Elections will be held on Thursday 2<sup>nd</sup> May. Should you wish to stand in the Elections, then please contact [electoral.services@southglos.gov.uk](mailto:electoral.services@southglos.gov.uk). Forms will be available in March.

## **Oldown Play Area – New Equipment**

The project is now gathering pace. However, more volunteers are required to see it through. If you are at all interested, please contact: [clerk@olvestonparishcouncil.gov.uk](mailto:clerk@olvestonparishcouncil.gov.uk)



# Making Space for Wildlife *Emma Williams*

## Bluebells - The Nation's Favourite Wild Flower

It's nearly that time of year when we can go for a walk and see carpets of bluebells. Bluebells are usually found in woodland and, if plentiful, is an indication that the woodland is an ancient woodland which has been present since at least 1600. They were traditionally used for their sticky sap to bind books, set feathers on arrows in the Bronze Age and as starch for collars in Elizabethan times. All parts of the plant are poisonous to humans and animals causing diarrhoea, vomiting and a slow heart rate. They do however transform our woodlands in springtime, so it is hardly surprising that they are one of the nation's best loved wildflowers.

The native English Bluebell should not be confused with the Spanish Bluebell which was introduced as an ornamental around 400 years ago. Hybrids between the British and Spanish Bluebells also exist and were first recorded in 1963. Unfortunately, these varieties are hardier so our native bluebells may be under threat as the hybrids spread quickly, out-competing our native bluebells and diluting their gene pool.

So how can you tell the difference between the British and Spanish Bluebell? The British Bluebell is a deeper blue colour with droopy stems, creamy white pollen and a sweet fragrance, whereas the Spanish Bluebell is pale blue with fatter upright stems, blue pollen and not much smell.



British Bluebell



Spanish Bluebell

Bluebells are now protected, which means that you cannot pick them or dig up bulbs from the countryside or remove them from land to sell. Trade in Bluebell bulbs is also an offence.

Bluebells usually start flowering from mid-April to late May; however they can be seen as early as mid-March. So, this month, start to look out for Bluebells and see if you can tell which variety they are. If they are British, you will know that you are in an ancient woodland.

You can also log the first flowering of the bluebell (once the petals open allowing you to see inside the flower) on Nature's Calendar at [www.naturescalendar.woodlandtrust.org.uk](http://www.naturescalendar.woodlandtrust.org.uk). You will be adding to a long biological record which tracks the effects of weather and climate change and has been doing so since as far back as 1736!

## Alveston Singers

The Alveston Singers performed four concerts in 2018 singing a wide variety of music and, before Christmas, helped shoppers to get into the festive spirit by singing carols at the Tesco store in Thornbury.

Our charities for the year were Cancer Research UK and the Children's Hospice South West and we raised £2,400 which will be divided equally between the two charities. We do not sell tickets for our concerts, but we are very grateful to our audiences for their generous donations. Every penny which is donated goes directly to the charities, nothing is taken out for choir funds.

We look forward to welcoming many of you to our next concerts which will be on Saturday May 18<sup>th</sup> and Tuesday May 21<sup>st</sup>. The programme and venues will be in later editions of the magazine.

**OLVESTON PARISH TWINNING ASSOCIATION**



## Wine Challenge - a reminder

Friday 22<sup>nd</sup> March 7.30pm Olveston Parish Hall.

It is not too late to book your tickets for The Great Olveston Wine Challenge.

This wonderfully entertaining evening involves nothing more demanding than tasting a selection of wines and trying to match them with their descriptions. There is absolutely no need for any wine 'expertise' at all (in fact sometimes we have had the best results from people who claim to know very little!)

Plenty of delicious bread and a variety of cheeses accompany the tasting to complete the experience. The noise levels always rise as the evening goes on and great fun is had by all. Prizes (bottles of wine, naturally) go to those who score the highest number of matches.

To get your tickets please contact Emma Gerrard by text: 07812719948 or email. [emmaneal369@btinternet.com](mailto:emmaneal369@btinternet.com)

Tickets cost £15 or £13 for OPTA members and tickets must be paid for at the time of booking to guarantee your place. So, why not get a group together for a really good night out?

## Sunday Concert

St. Mary's Church, Thornbury 24<sup>th</sup> March 4 – 5pm.

Alison Boles and the Thornbury Clarinet Choir will entertain. They started in June 2013 and now play a range of clarinets of all sizes

There is no charge; however, donations for the music fund are welcome.



## Olveston Parish Hall AGM

**The AGM will be held on Thursday 14th March at 7.30pm.**

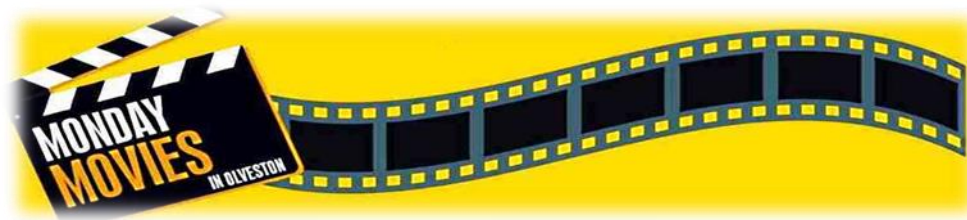
Please do support this evening, as your views and comments on the Hall's place in Parish life are most helpful to the Management Committee.

All members of that Committee are willing to continue in their roles, so no elections are necessary. Wine and Cheese will be served to entice you to attend.

**Plus - A Reminder about the Parish Hall 'Fish and Quiz'.**

The Annual Fish and Quiz will be held on Friday 1st March 2019. Tickets are £8.50, to include a fish and chip supper. Teams of 4 please. Doors open at 7.15 for a 7.45 prompt start. There will be a cash bar.

For tickets contact Pat Savage on 01454 610388 or email [pat@savageassociates.co.uk](mailto:pat@savageassociates.co.uk)



## MARCH PROGRAMME

*Trevor Anderson*

Our winter programme concludes with our two March films as described below. Leaflets giving further details have been emailed to all Movie Club members and paper copies are available to pick up from just inside the church door. Everyone is welcome to come along (you don't need to be a Movie Club member), admission is free and there is no need to book.

### MONDAY MOVIES (7.30pm on the 1<sup>st</sup> & 3<sup>rd</sup> Mondays of each month)

**Mon 4 Mar:** The film is a foot-stomping celebration of a world-famous rock band, their music and their extraordinary lead singer who defied stereotypes and shattered convention to become one of the most beloved entertainers on the planet. The film traces the meteoric rise of the band through their iconic songs and revolutionary sound, their near-implosion as the lead singer's lifestyle spirals out of control, and their triumphant reunion to give one of the greatest performances in the history of rock music. In the process, the band cements a legacy that continues to inspire outsiders, dreamers and music lovers to this day. (2018, 2h 14m, Cert 12A)

**Mon 18 Mar:** This spellbinding documentary follows a 13-year-old nomadic Mongolian girl, as she trains to become the first female in twelve generations of her Kazakh family to become an eagle hunter. Set against the breath-taking expanse of the Mongolian steppe, the film features some of the most awe-inspiring cinematography ever captured in a documentary, giving this intimate tale of a young girl's quest the dramatic force of an epic narrative film. (2016, 1h 27m, Cert U)

All the films are shown in **St Mary's Church, Olveston** and doors open 30 minutes before the start. Refreshments are available at all the shows, plus licensed bar in the evenings and popcorn and soft drinks at any morning films..



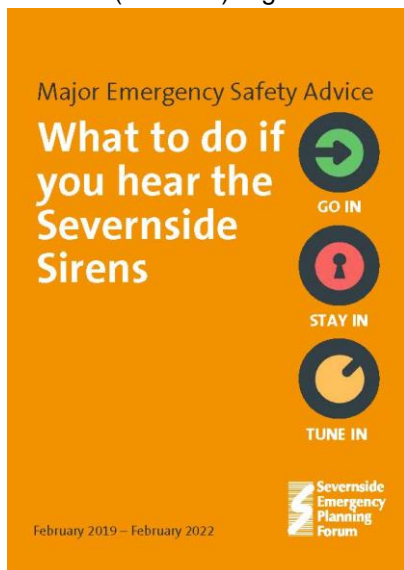
We make no charge for entry, but we do value and appreciate a small **donation** towards church running costs if you have enjoyed the show.

For copyright reasons we can't name the films here, but if you join the Movie Club, we'll send you titles and full details by email. It costs nothing to join – just email me at [trevoranderson@btinternet.com](mailto:trevoranderson@btinternet.com)

# Major Accident Safety Advice

*Andrew Bruce, Senior Civil Protection Officer, Bristol City Council  
Andrew.bruce@bristol.gov.uk*

The latest instalment of the Major Accident Safety Advice booklet was recently distributed to 34,000 properties in the Severnside area. The booklet is produced by the Local Authorities on behalf of the local hazardous substance handling industries and is a requirement under the Control of Major Accident Hazards (COMAH) regulations.



The booklet explains what action should be taken in the event of a chemical incident at one of the sites and following activation of the Severnside Sirens network. Remember if you hear the sirens you should: **'Go In, Stay In and Tune In'** and wait for updates on radio, local news and social media.

All properties within the audible range of the Severnside Sirens should have received a booklet in the post; however, further copies are available from your Local Authority's emergency planning department. A PDF version of the booklet can be found on Bristol City Council's website under the Crime and Emergencies section.

## Aust Parish Council Matters

*Kath Godden austparishcouncil@googlemail.com.*

### **New Clerk**

I have thoroughly enjoyed my first few months in the role as Clerk to Aust Parish Council. I am very grateful for the warm welcome and support I have received from the Councillors, as well as members of the Parish I have had the pleasure of meeting.

### **2019 Calendar**

Elections for Parish Councillors take place every four years, with 2019 being an election year. Further information will be provided during April and May.

The annual meeting is due to be held at Elberton Village Hall on Tuesday 9<sup>th</sup> April 2019. All will be welcome.

### **Precept**

Aust Parish Council decided on its 2019/20 budget at the January meeting, setting the precept at £4,856, which equates to £21.87 for a band D household. This represents an increase of 10% in the part of your council tax bill that comes to the Parish. The increase reflects the costs of the election and employment of a new clerk and is the first significant increase for several years.

### **Town and Parish Council Forum**

The Chairman and I recently attended the Town and Parish Council Forum. This is a quarterly meeting, attended by local Parish Council members and representatives of South Gloucestershire Council. Presentations were given on the Council's current review of Planning and Streetcare processes. All local Parish Councils have been asked to complete surveys on both. The next Forum is due to take place in June. Please do let me know if there are any issues you would like raised.

### **Horizon Nuclear Power**

You will no doubt have seen the recent announcement from Horizon Nuclear Power that it is suspending its UK Nuclear Development Programme, which includes the site at Oldbury.

The Chairman recently attended the Oldbury Site Stakeholders Group meeting, at which Horizon confirmed the suspension. They also confirmed that they were not looking to sell either the site, or the properties they own in and around Oldbury, but are keeping the option open to resume development in the future if possible.

## **Cancer Research UK Quiz**

Once again, by popular request, Thornbury and District Cancer Research UK Committee is holding a Quiz Night with a Fish and Chip Supper on Friday 22nd March at Manorbrook Primary School, Thornbury.

Quiz commences at 7.30pm sharp - so please be there at 7.15pm.

Tickets are priced at £10 per person, which includes both admission and a fish and chip supper. There will be a Licenced Bar available, together with an excellent Raffle.

Tickets available from Gill Blackborough on *07866580608* or any Committee Member. Don't delay, since tickets for this event will be quickly sold out!!



# Charity Auction with Live Music from 'Just 3 Harmony'

Friday March 22<sup>nd</sup> at St Helen's School Main Hall, Alveston,



Making Memories for Bereaved Children  
Registered Charity Number 1178952  
[www.madeamarkcharity.com](http://www.madeamarkcharity.com)

Doors open 8pm for 8.30pm start  
(Carriages 11pm)

Tickets now on sale £10 each.  
Tickets include cheeseboard,  
dessert platters and soft drinks. You  
are welcome to bring your own  
alcohol (glasses provided).

Over 30 auction lots- ranging from Aston Martin VIP Factory Tours and Hotel Stays to Cow Milking, Relaxation and Pilates!

If you would like to enquire about tickets please contact us: email [madeamarkcharity@yahoo.com](mailto:madeamarkcharity@yahoo.com), or [www.madeamarkcharity.com](http://www.madeamarkcharity.com) or call 01454 416948.

## Fun with Flowers

St. Peters Hospice Severnside Support Group would be delighted to welcome you to the Spring Flower Demonstration in the Thornbury Methodist Church Hall on Tuesday 2nd April at 2.30pm.

The demonstrator, Hilary Legg, will show us how to have fun with a bunch of supermarket flowers and how to make the best of them. There will be Books, a Bring and Buy Table and a Raffle.

Entrance £5.00 to include cream tea. Tickets available from the Town Hall from 4th March. Please come along and support St Peters, your local Hospice.

# Refusing to Conform: New Exhibition

Our local museum re-opened on Tuesday 5<sup>th</sup> February with 'The Story of Non-Conformity in South Gloucestershire', an exhibition which has arisen out of a collaboration with colleagues at Kingswood, Yate and Frenchay museums.

It was a 1662 Act of Charles II which first identified groups who refused to conform to the rules and ceremonies of the Church of England as non-conformists: Presbyterians, Congregationalists, Baptists and Calvinists. After that, other groups - including Methodists, Unitarians, Quakers, Plymouth Brethren and English Moravians - were also called non-conformists. As such, they were very often denied access to public office and university degrees.



The collaborative element of this exhibition tells the story of South Gloucestershire's non-conformity in broad-brush terms.

However, the museum in Thornbury has added many of its own, locally specific details to this overview. For instance, did you know that Handel Cossham - non-conformist lay preacher, coal-mining entrepreneur, largest employer in the West of England, public benefactor and builder of several schools, JP, MP for

Bristol East, twice Mayor of Bath - was born in the tiny, now rather dilapidated, cottage situated next to Age UK in Thornbury High Street? You may read the plaque on the house which says so. In fact, he was born in the same room as his great grandfather, grandfather and father had been born. When Handel died, 50,000 people lined streets in Bath and Bristol to watch his funeral procession. You can find out more about him in the exhibition, including how he came to be called Handel and how he made a successful career in the coal mining business.

Olveston Methodists will be celebrating the 200<sup>th</sup> anniversary of their church building next year (you can see the 1820 plaque on the front of the church) and the museum is delighted that they have contributed some information

about local Methodism to the exhibition. This includes a 'family tree' showing that there was non-conformity even within the non-conformists, with splits taking place and break-away chapels being set up, before the church came together again.

This free exhibition runs until 27th April, Tues to Fri 1pm – 4pm, Sat 10am – 4pm.



## #Marlwood Rocks! Save the Date.

We are raising money for Marlwood School by organising a big party #marlwoodrocks. This event will take place on Saturday 7th September at Marlwood School in a marquee structure on the school field. We are working closely with Marie from Friends of Marlwood School (FOMS) and countless amazing volunteers to make this an exciting and fantastic event you won't want to miss! This event is open to everyone. We would love to see and meet all ex pupils, teachers and friends of Marlwood School from all year groups as far back as we can,

Tickets will go on sale in April and will cost £25 per person. The ticket price includes a hog roast, photo booth, a band and a DJ. There will be a huge raffle and a silent auction, we even have a few surprises up our sleeves! In the meantime, if you would like to get involved in any way please contact Caroline at [carolinejblake@hotmail.co.uk](mailto:carolinejblake@hotmail.co.uk) or 07730 514715, Kate at [katieatkins1@live.co.uk](mailto:katieatkins1@live.co.uk) or 07792 143913 or Marie at [marie@kingshaulage.co.uk](mailto:marie@kingshaulage.co.uk) or 07887 652381

## Donkey Nativities

*Tom Sanday*

Christmas is now well and truly over and with it the twelve Donkey Nativity Carol Concerts and two Childrens' Christmas Shows that were held at Rudgeway. Mountains of mince pies were consumed, gallons of hot chocolate and mulled wine drunk, and so many carols were sung.

Amazingly everything went really well. The donkeys knew exactly what was supposed to happen and were able to steer the humans in the right direction. There were one or two hiccups though. This was Petal's first engagement and he had an attack of first night nerves and spent some time braying at the audience before making a prompt return to the stable at the end of the carol, but gradually the magic of the stage got to him and he settled down. Blossom enjoyed the singing and kept joining in whenever she could, luckily drowning

the solos of the three kings. The sheep behaved well all through their two-week engagement. They were excellent with the audience but did shove each other rather on their exits.

It was a memorable two weeks. My abiding memories are of mothers trying to smile while their babies took on the role of Baby Jesus, and of a donkey who each evening would breath gently in my face, tickling me with his whiskers, before we made our entry.

Our thanks must go to so many; the local lay readers and clergy who led the concerts so proficiently; the orchestras and brass bands who led the carols so well; the myriad of helpers who ran the car parking, ticketing, refreshments, stabling and shepherding; the children who volunteered as Mary, Joseph, Gabriel and Shepherds; the Kings; and of course the donkeys and sheep.

Thanks, too, to the audiences, who sang lustily each evening and donated a total of nearly £5600 to the 'Safe Haven for Donkeys in the Holy Land' charity. Safe Haven is dedicated to treating donkeys and providing education and support to their owners. Our money will go to help pay for medication for the donkeys and the running costs of the mobile clinics that go out in to the community to care for the donkeys.

Finally, our thanks must go to Jean Fooks, the moving spirit, founder and organizer of the Concerts, who gives so much time and effort for donkey causes.

Next Christmas the Donkey Nativity Carol Concerts will run from Tuesday December 10<sup>th</sup> to Saturday Dec 21<sup>st</sup>, each Tuesday to Saturday. Tickets will be available from Rudgeway Donkeys from November.

## Old Down Cricket Club

*Tony Gardner 07889 727729*

### **150 Club Winners February 2019:**

£50 Pete Jackson  
£15 Andrew Kitchen  
£5 Angus MacDonald

### **Latest Bonus Ball Winners:**

19/01/19 Diane Grosvenor  
26/01/19 Diane Grosvenor  
02/02/19 Andy Rowen

Up the Down!!

# Olveston and Tockington W.I.

*Vicki Townsend*

Our speaker for January was John Craig, the retired Chief Fire Officer for Wiltshire, who engaged us with a light-hearted glimpse of life in the fire and rescue service during his long career. John's stories ranged from nearly blowing up the official party at an annual fire demonstration in his early days in Leicester, to rescuing a horse from a swimming pool, and from getting cats out of trees to pulling heads out of railings. On a cold winter evening it was an entertaining and insightful hour.

The W.I. Book Club continues to meet in the White Hart every five weeks. Book choices by the members are not always to everyone's taste but it encourages diversity of reading and we still all turn up!!

The March speaker is Pam Forrest, whose subject is 'Sunshine and Blue Skies - Panama to Mexico'. If you are feeling the cold of winter, join us at 7.30pm on March 12<sup>th</sup> at The Parish Hall for talk of blue skies.

THORNBURY



THE UNIVERSITY OF THE THIRD AGE

## Welcome Meeting

Thornbury and District U3A has nearly 1,900 members and around 90 different interest groups meeting at various venues throughout the area, but there is always room for more!

The groups mainly meet during the day and interests range from Archaeology to Walking. Some meet weekly, others less often, and they include physical activities, crafts, board and card games, organised visits to gardens, concerts and theatre as well as purely educational topics. Details of all our groups can be found on our website – [www.thornburyu3a.org.uk](http://www.thornburyu3a.org.uk).

We will be holding our next Welcome Meeting for new and prospective members on Monday, 4<sup>th</sup> March from 3:30pm in St Mary's Church Hall, Eastbury Road, Thornbury, BS35 1DR. Please come along; we would love to meet you and bring your friends.

For further information visit our website or phone our Membership Secretary, Jackie Gitsham on 858438 or Chairman, Alison Makepeace on 415019.

# Thornbury Jazz Festival

Tickets are selling fast for Thornbury's second Jazz Festival which is taking place on 23<sup>rd</sup> March in The Armstrong Hall.

The evening starts at 6pm with the South Gloucestershire Youth Jazz Orchestra, talented local young musicians in a big band experience playing Glen Miller favourites and Count Basie arrangements. They will be followed at 7.30pm by the Jenner Jazz Quartet, a versatile and imaginative quartet of seasoned musicians: Gareth Williams (flute and saxes), Ben Hughes-Games (piano), Jim Pimpernell (double bass) and Jim Sanders (drums) who will impress with standards from the Great American Songbook, Latin America and much else.



Top of the bill at 9.00pm are The Royals, a much-loved institution of the Bristol jazz scene, who will celebrate the Kings and Queens of the swing era with their zippy, upbeat take on classics by Nat King Cole, Ella Fitzgerald and Louis Prima. Described by Venue Magazine as "old-school good time tunes played with zippy

brightness", The Royals' sound is brought together by a unique combination of musicians - old friends who share a love of the swinging sounds of the 1940s and 50s.

The evening will finish with a joyous celebration by the eighteen strong Boulevard Big Band, one of the finest ensembles in the South West led by singer-songwriter, arranger and all round entertainer Marvin Muoneké, playing an extensive repertoire of music including classics from the library of Ellington, Miller, Basie, Buddy Rich and Sinatra as well as contemporary sounds from Gordon Goodwin, Michael Bubl , and Paul Anka.

A wonderful evening of varied and first-rate jazz as well as a great evening out with bar and hot food available, jazz caf  style in The Armstrong Hall Thornbury. Any proceeds from the event will be donated to the Armstrong Hall Redevelopment Fund. Book tickets (£20 for the whole evening) and food (£7 pp) at Thornbury Town Hall or phone 01454 412272.



# Thornbury Library

## **Storytime and Rhyme time for babies and pre-schoolers (Term Time Only)**

Storytime Mondays 2pm – 2.30pm. Meet Hugless Douglas at our special storytime on March 4<sup>th</sup>!

Rhymetime Fridays 10.30am -11.00am.

It's a great way to meet other local parents, new faces are always welcome – and it's free! No booking required, just turn up - we look forward to seeing you!

## **Sight Loss - Information, Advice and Support**

First Thursday of the month 10.30am - 12.30pm

Vision West of England are offering information, advice and support to anyone living with sight loss. If you, or anyone you know would like more information on services for people with sight loss, then drop in any time between 10.30am and 12.30pm on Thursday 7<sup>th</sup> March.

## **Craft & Chat**

First Thursday of the month 2pm - 4pm.

A chance for people who love crafting to get together and share inspiration. No charge and no booking required. Just turn up and bring your craft project with you. New faces welcome!

## **South Gloucestershire Second World War Stories project**

We are delighted to have been awarded funding by the Heritage Lottery Fund for our South Gloucestershire Second World War Stories project. Made possible by money raised by National Lottery players, the project aims to explore the impact of the Second World War in South Gloucestershire, both during and in the post-war years.

Come and see our new touring exhibition which focuses on the impact of the Second World War on the lives of the people of South Gloucestershire. The themes of the exhibition include 'At Home', 'Civil Defence', 'Under Attack', 'Changing places' and 'Front line'.

The exhibition will be at Thornbury Library from 4<sup>th</sup> – 16<sup>th</sup> March.

## **South Gloucestershire Second World War Stories**

Reminiscence Tea Party Thursday 14<sup>th</sup> March 2 - 4pm

To complement the exhibition Thornbury Library are holding a reminiscence tea party. Come along and share your stories and memories, bring along your photos and enjoy the wartime music. Tea and cakes provided 1940s style! Free tickets available now from Thornbury Library.

[www.facebook.com/sgloslibraries](http://www.facebook.com/sgloslibraries)

@SouthGlosLibs [www.southglos.gov.uk/libraries](http://www.southglos.gov.uk/libraries)

# Yours Faithfully

*Lyall Drewett*

*Old Down Oasis Church*

At Christmas time we celebrated the incarnation of Jesus Christ, the Son of God, once again. His coming to earth was miraculously predicted in the Old Testament of the Bible hundreds of years before it took place and the New Testament clearly establishes the fact that Christ is the fulfilment of those prophecies through his life, death and resurrection.

There are countless passages which indicate the purpose for Christ's coming and prove that Jesus is the fulfilment of them, and one which is particularly relevant is found in Luke's Gospel Ch 4 verses 16---21. Here Jesus is speaking in the Synagogue and clearly indicates that he is the fulfilment of these verses and is the person anointed with the Spirit of God to meet the needs of those outlined in Isaiah Ch 61 verses 1,2 and 3.

If we look at the list, we see a reflection of conditions which sadly characterise our society today, 2700 years on. There are the Poor, those downtrodden disadvantaged people who are held back from progress by people or circumstances. Jesus has good news for them because they can qualify to inherit the Kingdom of Heaven through faith in Christ. Then the Broken Hearted are mentioned. Plenty of those around in our society! Jesus was broken on the cross that we might be healed and made whole. He can do it because he conquered death. Next the Captives are mentioned. We are a nation of captives to one thing or another. We are driven by materialism which fails to bring true satisfaction and drugs and drink have domination over many people's lives. Only Christ can truly satisfy and enable us to live meaningful lives again. Prisoners are next to be mentioned and we have seen amazing young drug addicts and ex-prisoners from a farm, run by committed Christians in Abergavenny, experience new life in Christ as they have been delivered from addiction and set free. This project has a 75% success rate. They will be coming here on the 5<sup>th</sup> May and 29<sup>th</sup> Sept and are known as 'Vision of Hope'. We would encourage you to come and hear them and be blessed.

Jesus Christ can meet your every need, whatever it is, and if you would like a prayer for any issue in your life or family please let us know. We would love to pray for you. We meet every Sunday evening at 6.30pm and would love you to join us to worship God for about one hour.

# Church News

## ST MARY THE VIRGIN, OLVESTON

Mar 3	8am	Holy Communion	Rev Helen Webb
	9.30am	Holy Communion	Revs Moss & Lloyd
	6pm	Evensong with Choir	Paul Harrod
Mar 10	8am	Holy Communion	Rev Ann Lloyd
	9.30	Morning Prayer with Choir	Rev Ann Lloyd
	6pm	Severnside Taizé	Revs D Moss & A Lloyd
Mar 17	8am	Holy Communion	Rev David Bone
	9.30	Holy Communion with Choir	Revs D Moss and D Bone
	6pm	Evensong	Trevor Cook
Mar24	8am	Holy Communion	Rev D Bone
	9.30	Fourth Sunday	Paul Harrod
	6pm	Evensong with Choir	Rev David Moss
Mar 31	8am	Holy Communion	Rev Ann Lloyd
	9.30	Mothering Sunday with Choir	Rev D Moss & Paul Harrod
	6pm	Holy Communion (BCP)	Revs D Moss & A Lloyd

**Information on services correct at time of going to press.**

**Rev David Moss**, 01454 415190; email: [mossds@gmail.com](mailto:mossds@gmail.com)

**Verger:** Mrs. June Robbins, 01454 617491

[www.stmarysolveston.org.uk](http://www.stmarysolveston.org.uk)

**WEDNESDAY HOLY COMMUNION:** At 9.15am, except 4<sup>th</sup> Wed when it is at Olveston Methodist Church

**Morning Prayer:** 8.30am daily ex. Wed

## CHAPELRY OF ST JOHN, AUST

Mar 10	10am	Morning Prayer	Rev Ann Parker
Mar 24	10am	Holy Communion	Revs Moss & Parker

**Focal Minister:** Rev Ann Parker, 01454 632329

e-mail [annatdibley@btinternet.com](mailto:annatdibley@btinternet.com)

**Church Wardens:** Jon Burnett 633835 & Jenn Dickens 632035

## ST MARY DE MALMESBURY, LITTLETON-ON-SEVERN

Mar 10	9am	Morning Prayer	Mrs Tracey Black
Mar24	8am	Holy Communion	Rev David Moss

**Contact:** Mrs Tracey Black 01454 417660

## ST JOHN THE EVANGELIST, ELBERTON

Mar 10	9am	Morning Prayer	Judith Heybyrne
Mar24	9am	Morning Prayer with Communion	Rev David Moss

**Contact: Mrs Tracey Black 01454 417660**

## OLVESTON AND TOCKINGTON METHODIST CHURCH

Mar 3	10.00am	Tock Ch	CHURCH ANNIVERSARY SERVICE led by Rev Peter Mortlock
Mar 10	10.00am	Olv Ch	Morning Worship with Holy Communion led by Rev Sandy Williams
Mar 17	10.00am	Tock Ch	Morning Worship led by Mr John Hopper
Mar 24	10.00am	Olv Ch	Morning Worship led by Rev Simon Edwards
Mar 31	9.30am	St Mary's Ch	Mothering Sunday Service

**NORTHWICK LUNCHEON GROUP:** This meets at 12.30pm on Wed. 13<sup>th</sup> March. To book your lunch, please ring 416528.

**TOCKINGTON LUNCHEON GROUP:** will meet in the Swan at 12.15 on Thursday 21<sup>st</sup> March.

**COFFEE MORNINGS:** Sats 10.30 - 12 noon in Olveston Methodist Hall.

**PRAYER MEETINGS:** Tuesdays 9.00-10.00 in Olveston Methodist Church.

**HOUSE GROUP:** Tuesday 19<sup>th</sup>, 10.30am at 6 Manor Close led by Rev Sandy Williams.

**CONTACT:** Rev Simon Edwards Tel 01454 418176,

**email:** [simon.edwards@methodist.org.uk](mailto:simon.edwards@methodist.org.uk)

## THE VINE House of Prayer

Pilning Street, Awkley BS35 4HL

Designated as a 'House of Prayer for all Nations' in 2005 we continue to meet in a relaxed atmosphere seeking, with God's help, to find ways to influence the world in which we live through prayer and relevant actions. This also includes sharing our own personal situations and praying for one another and the communities of which we are a part Times of worship (in various forms), applying Biblical Truths, and a time of remembrance of the death and resurrection of Jesus in sharing Communion are essential in our meeting together. We meet, on Sundays at 10.30am and Mondays and Wednesdays at 7.30pm We also visit other Churches and events so please check our Notice Board or contact.

**Mike and Barbara Matthews,** tel. 07512 917229 or email:

**[thevine\\_awkley@hotmail.com](mailto:thevine_awkley@hotmail.com)**

## THE OASIS CHURCH, OLD DOWN

Mar 3	6.30pm	Neil Mobbs
Mar 10	6.30pm	Peter Price
Mar 17	6.30pm	Angus Gregson
Mar 24	6.30pm	David Winfield
Mar 31	6.30pm	Wully Perks

Each Thurs at 6.30pm Prayer & Praise Time

Contacts Jenny Parfitt [jennyparfitt@ymail.com](mailto:jennyparfitt@ymail.com)

Sue Tett [stett56@hotmail.co.uk](mailto:stett56@hotmail.co.uk)

## **AUST EVANGELICAL CHURCH** Family Worship 11.00am

For more details contact Danny Bamfield 01454 419324.

e-mail [danny@thebamfields.co.uk](mailto:danny@thebamfields.co.uk)

## **LITTLETON EVANGELICAL CHURCH**

Evening Worship every Sunday at 6pm for details tel. 413247

## **RC CHURCH OF CHRIST THE KING**, Thornbury -

Sun 8.30am Mass 11.00 Family Mass

Monday-Friday Daily Mass at 10am

Tel 01454 412223, [www.ctk-thornbury.org.uk](http://www.ctk-thornbury.org.uk)

## **SOCIETY OF FRIENDS (QUAKERS)**, Thornbury

Meeting for Worship Sundays 10.30-11.30: The Hanover Room, The Chantry, Castle St. Wheelchair accessible. Children welcome with prior notice.

**Local contact:** Brian Hawkins, [hawkinsb863@gmail.com](mailto:hawkinsb863@gmail.com) 01454 854867

National: [www.quaker.org.uk](http://www.quaker.org.uk) Bristol area: [www.bristolquakers.org.uk](http://www.bristolquakers.org.uk)

# Diary Dates for March 2019

The information given below is believed to be correct as we go to press.

1 <sup>st</sup> Fri	Haven Memory Café Thornbury Carers Support Group	10.15-11.45 1-3	URC Chy
2 <sup>nd</sup> Sat	Coffee morning	10.30-12.00	MH
3 <sup>rd</sup> Sun			
4 <sup>th</sup> Mon	Monday Movie	7.30pm	S+M
5 <sup>th</sup> Tue	Friends of Daldry Gardens Coffee morning Tea/Coffee & Biscuit 50p Monthly Raffle	10.30-12.00	DGCL
6 <sup>th</sup> Wed	Holy Communion followed by tea & cake Table Tennis every Wednesday OPHS. The New Museum at Slimbridge	2.30 7.00-8.30pm 7.30pm	DGCL PH OMC
7 <sup>th</sup> Thu	Coffee Shop Olveston Playgroup Thornbury Farmers' Market	9-12 9.30-11.30 9-1.30	OS+ MH
8 <sup>th</sup> Fri	St Peter's Hospice quiz	7.15	AH
9 <sup>th</sup> Sat	Coffee Morning Coffee Morning	10.30-12 10.30-12	MH AVH
10 <sup>th</sup> Sun			
11 <sup>th</sup> Mon			
12 <sup>th</sup> Tue	Friends of Daldry Gardens Coffee morning Thornbury Memory Café Winter Soup WI. Sunshine & Blues Skies - Panama to Mexico Aust Parish Council	10.30-12.00 10.15-11.45 12-1.15 7.30 7.30	DGCL TMH OS+ PH EVH
13 <sup>th</sup> Wed			
14 <sup>th</sup> Thu	Coffee Shop Craft Session Olveston Parish Hall AGM	9-12 10-12 7.30	OS+ LVH PH
15 <sup>th</sup> Fri	Haven Memory Cafe	10.15-11.45	URC
16 <sup>th</sup> Sat	Coffee Morning Parish Council Surgery Organathon	10.30-12 10.30-12 9am - 9pm	MH MH S+M
17 <sup>th</sup> Sun			
18 <sup>th</sup> Mon	Monday Movie	7.30	S+M
19 <sup>th</sup> Tue	Friends of Daldry Gardens Coffee morning	10.30-12.00	DGCL
20 <sup>th</sup> Wed	Jazz at the White Hart Olveston	8.00	



21 <sup>st</sup> Thu	Coffee Shop Thornbury Farmers' Market Olveston Playgroup	9-12 9-1.30 9.30-11.30	OS† MH
22 <sup>nd</sup> Fri	OPTA Wine Challenge	7.30	PH
23 <sup>rd</sup> Sat	Coffee morning	10.30-12	MH
24 <sup>th</sup> Sun	Faure's Requiem at St Helen's Alveston	7.30	
25 <sup>th</sup> Mon			
26 <sup>th</sup> Tue	Friends of Daldry Gardens Coffee morning Thornbury Memory Café Winter Soup Olveston Parish Council	10.30-12.00 10.15-11.45 12-1.15 7.30	DGCL TMH OS† AP
27 <sup>th</sup> Wed	Alveston Historical Soc - 'William Blathwayt of Dyrham Park'	7.30	AMC
28 <sup>th</sup> Thu	Olveston Playgroup Coffee Shop Craft Session	9.30-11.30 9-12 10-12	MH OS† EVH
29 <sup>th</sup> Fri			
30 <sup>th</sup> Sat	Coffee Morning	10.30-12	MH
31 <sup>st</sup> Sun	Summer Time Begins Mothering Sunday		
<b>Looking ahead to April</b>			
26 <sup>th</sup> Fri	Thornbury Arts Festival commences		

**KEY:** **AC** Aust Church; **AH** – Armstrong Hall; **AMC** – Alv Meth. Ch.; **AMH**- Alv Meth. Hall; **AP** – Alexandra Pavilion; **AVH** – Aust Village Hall; ; **CH** – Cossham Hall; **Chy** – Chantry ;**CS** Castle Sch.**CTK** Christ the King **DGCL** – Daldry Gardens Community Lounge; **EVH** – Elberton Village Hall; **LVH** Littleton Village Hall **MH** – Olv.Meth.Hall;**OMC** Olv Meth Ch **OS** – Olv. School; **OS†** – Olv. Stores; **OSH** Old Sch. Hall Alm; **PH** – Olv Parish Hall; **StM** St Mary's Church, Olv.; **StMA** Almondsbury Church **StMTSt Mary's Thorn** **TCh** Tock Chapel; **TBCh** - Thornbury Baptist Church; **TMH** – Thorn. Methodist Hall; ; **TMS** Tock Manor Sch.. **URC** United Reform Ch Th

**Contact details** for any clubs or organisations in the Meeting Point area can be found in the Meeting Point Directory on the community website: [www.olvostonandaust.com](http://www.olvostonandaust.com). If you would like to update your organisation's details, please email: [meetingpointsecretary@olvostonandaust.com](mailto:meetingpointsecretary@olvostonandaust.com)

**Advertisements** Neither Meeting Point, its editor, nor management committee accept any responsibility or give any guarantee in case of any dispute or claim as to quality, condition or delivery of commodities or services advertised in this magazine. It is not to be taken that publication implies recommendation. It is always advisable to check prices when ordering goods or services.

**Views** expressed by contributors are not necessarily those of the editor or Meeting Point magazine.

**Copyright Meeting Point 2019.** Copyright remains with the author(s) and Meeting Point. No part of this publication may be reproduced or transmitted in any form without the prior permission of the copyright owners.

Meeting Point is printed by Motion Printing Ltd.