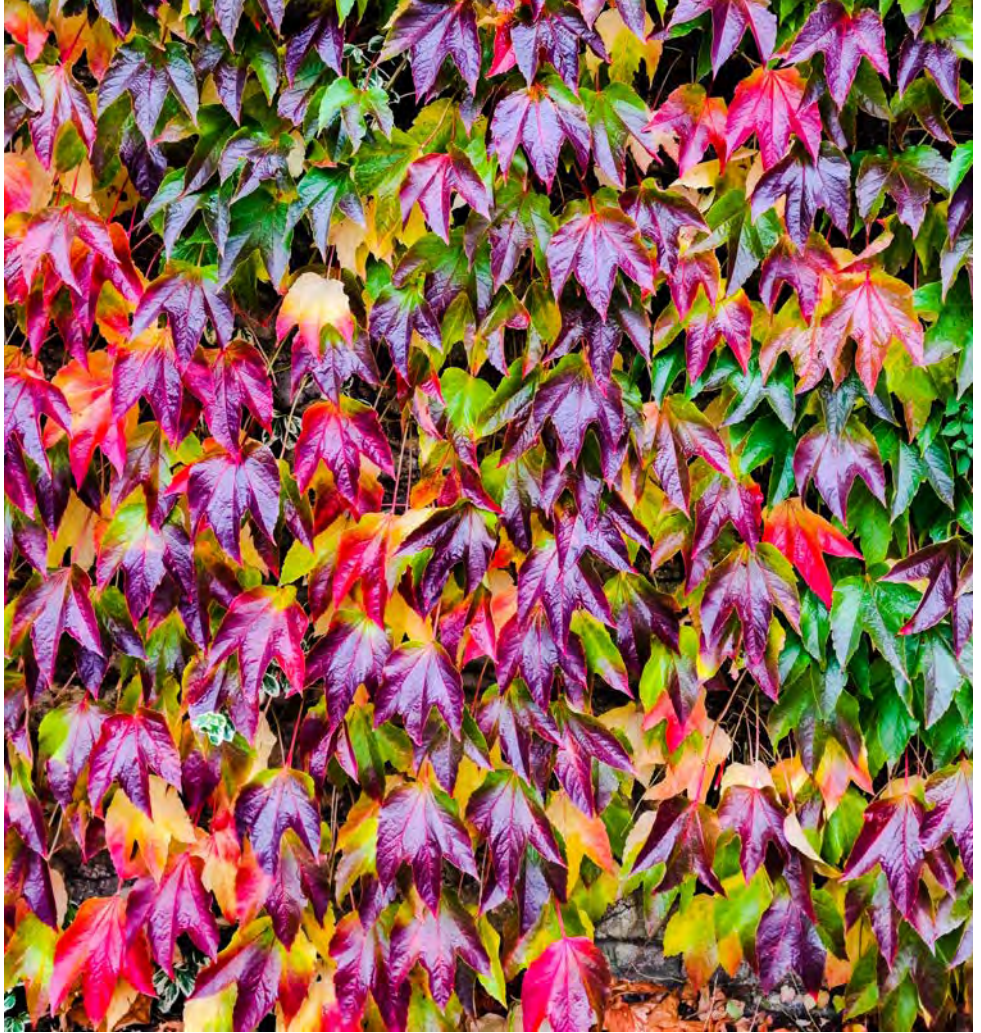


# Meeting Point



October 2022

**TRUE BLUE TAXIS**  
(OLVESTON)

**Local Taxi Company**



**Honest, Reliable and Safe**

**Cash or Card Payments**



**Mobile:**

**07967 042794**

## Top-to-Tail Housekeeping

- Professional
- Dependable
- Comprehensive service

**Trading  
Standards  
Accredited**

**Felina  
Contract Cleaning**

01454 201562  
07790 050187  
cleaning@felina.biz  
www.felina.biz



**Weddings | Funerals | Bouquets | or just because...**

**Beautiful  
flowers for any  
occasion...**

Our Shop is open Tuesday to  
Saturday ~ 9.00am to 5.00pm

Taking walk in and phone orders

Delivering to BS35 and  
surrounding areas ~ Tuesday to  
Saturday from 9.00am to 5.00pm

Holding socially distanced  
meetings for weddings and  
memorials should you wish to  
discuss plans

Please call for prices or pop into  
the Shop in The Arcade,  
Thornbury



**t: 01454 416111**

**e: flowers@joliesfleurs.co.uk**



**THORNBURY  
Chiropractic  
CLINIC**

[www.thornburychiropractic.co.uk](http://www.thornburychiropractic.co.uk)

**STOPTOBER**

**GIVE UP SMOKING WITH**

**ACUPUNCTURE**

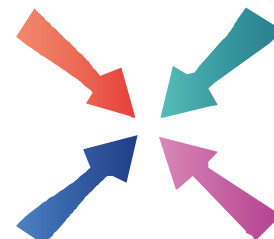
**SPECIAL OFFER**

**4 sessions for £120**

(usual price £130)

**FREE consultations available**

**01454 418259**



# Meeting Point

**Volume 47, Number 1, October 2022**

The community magazine for the villages of Olveston,  
Tockington, Old Down, Lower Hazel, Awkley, Ingst, Aust, Elberton and Littleton upon Severn

### EDITOR:

**Marelin Orr-Ewing**  
Courtlands  
Olveston  
Bristol BS35 4DU  
Tel: 01454 610081  
[meetingpointeditor@  
gmail.com](mailto:meetingpointeditor@gmail.com)

### ASSISTANT EDITOR:

**Angela Williams**  
Ashlea  
Haw Lane  
Olveston  
Bristol BS35 4EG  
Tel 01454 612850  
[meetingpointmagazine@  
gmail.com](mailto:meetingpointmagazine@gmail.com)

### ADVERTISING:

**Bernard Amos**  
Tel: 01454 620388  
[meetingpointadvertising@  
gmail.com](mailto:meetingpointadvertising@gmail.com)

**Publication date**

**1st of each month**

**Material for November 2022  
to the Editor or Deputy Editor  
by October 10th 2022**

## From the Editor

It was with great sadness that the Meeting Point team learned of the death of Her Majesty, The Queen, on September 8th.

Her family, and millions of others in the UK and around the world, will feel this loss greatly. She served as Queen with enormous dedication to duty for over 70 years and has been, therefore, a constant presence in our lives.

Our tribute to Her Majesty appears on the next page.

*Marelin*

Cover photograph by Lisa Helyar

Meeting Point Founded in 1976 by the Anglican and Methodist churches in Olveston, near Bristol.

Meeting Point magazine and Meeting Point Directory are online at the  
Community Website: [www.olvostonandaust.com](http://www.olvostonandaust.com)



# Thornbury Motors

- New and Used car sales
- Servicing, repairs and MOTs on all makes



thornburymotors.co.uk 01454 412535



Grovesend Road  
Thornbury  
Bristol  
BS35 2EF



## SAVAGE ASSOCIATES

Accountants·Business Advisors  
Corporate & Personal Tax Consultants

The Coach House, Aust Road  
Olveston, Bristol BS35 4DE  
Tel 01454 610388 Fax 01454 201541

for an initial consultation please contact:  
edd.savage@savageassociates.co.uk

## Vicarage Farm Holistic Therapy Centre

**Bringing balance back  
into your life.  
Offering a wide range of  
Holistic Treatments.**

### Hypnotherapy

A safe and effective treatment: to  
remove stress, anxiety, depression  
and phobias. Allowing positive and  
powerful changes in your life.

Tel 01454 614390  
www.vicaragefarm.org

# Her Majesty Queen Elizabeth II 1926 - 2022



Just a few months ago we joyfully celebrated The Queen's Platinum Jubilee. It was a great shock when we heard on Thursday 8<sup>th</sup> September that the Queen had died at Balmoral and her 70 year reign came to an end. Only two days before that she had held audiences with the outgoing Prime Minister and another with the incoming Prime Minister. She worked until the end. This typified her steadfast devotion to service to her people throughout her life.

Some of us remember the death of King George VI in 1952, and a few of the older generation can even remember the death of King George V in 1936, but for most people Queen Elizabeth is the only monarch they have known. Through all these years she has represented stability in a sometimes unstable world. She has brought joy into many lives. Amidst all the pomp and ceremony, who could forget her radiant smile? She will be missed deeply across Britain and the world.

Thank you, Ma'am. Rest in Peace.

We send our condolences to all the Royal Family.

Now we have a new reign. We wish King Charles III well in all he does for us.

God Save The King!

**D. YOUNG**  
GARDEN SERVICES  
*Fully Qualified with over 16 years Experience*  
Grass Cutting Hedge Cutting Turfing Fencing  
General Landscaping

Tel: 01454 416206 Mob: 07545 131488  
Email: d.younggardenservices@hotmail.com

**MD Aerials**  
Call Michael Dagger  
T: 01454 418 341 M: 07817 304 236

Freeview – Freesat – Sky – DAB Aerials

Wall mounting LCD & Plasma  
televisions setting up & tuning

mike@mdaerials.co.uk  
www.mdaerials.co.uk

**T. EDWARDS PLANT**  
Digger and Driver Hire

- Site/garden clearance
- Footings
- Drainage/soakaways
- Driveway preparation
- Stump removal
- Fencing & turfing
- Narrow access equipment

Price or day work t: 07900 372349  
t.edwardsplant@gmail.com  
CPCS/CITB qualified & insured

**Divine**  
Bathrooms & Wet Rooms

07584 666154  
Email: info@divinebathrooms.co.uk  
Web: divinebathrooms.co.uk

**iphe**  
Registered Plumber

**S.J FARR**  
KITCHEN FITTING  
SERVICES

Mobile: 07915673649

Our Associated Services Include:

- Plumbing
- Wall & Floor Tiling
- Decorating
- Plastering

City & Guilds Qualified

**Geoff Gulliver**  
Carpentry & Joinery, Littleton  
ALSO  
UPVC Doors, Windows and  
Conservatories. For a very  
competitive **FREE** estimate

**Ring (01454) 414947**



## Environment Event: Your Carbon Footprint

Saturday 1<sup>st</sup> October at 2.30pm  
St Mary's Church, Olveston.

There will be a video presentation, a guest speaker, activities and refreshments. The group will guide you through the process of assessing your personal Carbon Footprint online. In preparation for this occasion, here are a few thoughts for you to take on board:

- By 2025 our individual carbon footprint must be 2.1. At the moment the average is 7.4 per person. A quarter of that is created by the food supply chain.
- We can make changes by reducing food waste, selecting seasonal and local foods, reducing food air miles.
- Watching the television has a tally of 4.2 kg CO2 per 100 hours.
- Travelling by air for holidays makes a big difference.

Many things have to be taken into account, so come along on 1<sup>st</sup> October to find out. We look forward to seeing you.



## Monday Movies

On Monday 3rd October in St Mary's Church, Olveston, the Monday Movie Club will be showing a much-anticipated film about excavations which resulted in the finding of the Sutton Hoo treasures. This is not really a documentary, but it follows the actual events surrounding this monumental discovery and is set just before the start of WW2. The film stars Cary Mulligan and Ralph Fiennes. A few liberties are taken with the truth, although generally the facts outweigh the fiction. It was made only last year and is a gentle but poignant film.

Doors open at 7pm and the film starts at 7:30pm. Free admission to everyone, although donations are always welcome. Licensed bar, tea and coffee.



# Our newly extended stylish Thornbury Showroom now offers a Cash & Carry service

We have lots of carpet and vinyl remnants – are you looking for quality flooring at greatly reduced prices?  
Why not pop along and see what we have in stock.

**We offer FREE home visits, measures and quotes**



**LAMINATE | CARPETS | VINYL | ARTIFICIAL GRASS  
READY TO TAKE AWAY ON THE DAY**

**Phoenix Flooring  
Limited** 

**Unit 15 Hemingway Business Centre, Walker Way,  
Thornbury Bristol BS35 3US**  
Opening Hours: Mon to Sat 9am – 5pm

**DISABLED  
ACCESS**



## Olveston Parish Council

*Pat Savage and Martin Gibson*

### Cost of Living

Having enjoyed a very dry and warm summer, our thoughts now turn to the winter months. We know that both heating costs and the cost of living will rise substantially. Our District Council is on hand to provide help and assistance where possible. Please contact [southglos.gov.uk](http://southglos.gov.uk) for help with energy costs and the cost of living.

### New Trees

The Council has recently undertaken some tree planting on the Olveston Play Area and by Pump Lane in Old Down. As you will no doubt appreciate the trees do require a lot of watering! If any of our parishioners are feeling energetic, some buckets of water would be much appreciated by the trees!

### Vicarage Lane Play Area

Olveston Parish Council manages the Vicarage Lane play area and has observed that some of the equipment is showing signs of advanced age. Recently a repair was carried out to one piece of equipment at a cost of £700. So perhaps the time has come for a major revamp of the facilities, much as the Council sponsored at the Old Down play area last year. The Recreation and Leisure Committee has, therefore, been looking at the options and consulted with the suppliers of the Old Down equipment. The criteria to be followed would be safety, sustainability, and a degree of pleasure. Initial thoughts are for the existing large agility trail to be removed and replaced with a selection, perhaps 10, of smaller pieces of equipment which might include a tightrope crossing, a log rope, sloping balance walk and so on. A group swing (it's like a circular rope net which swings around in all directions) is also a contender. The traditional swings and bandstand would remain.

To make the play area age inclusive a proposal has been put forward for adult fitness equipment - such as a 'Combi Pull Down & Push Challenger', a 'Double Slalom Skier' and a rowing machine - to be installed. The idea is to attract as many families, including children, parents and grandparents as possible. This sort of project is not cheap. The equipment under review (not fully listed above) would cost around £70,000 and would have to be funded mainly by grants from charitable organisations. Your views on the subject would be greatly appreciated. Please email:

[martin.gibson@olvestonparishcouncil.gov.uk](mailto:martin.gibson@olvestonparishcouncil.gov.uk) or phone 07990970725.

**2 Men Went To Mow**

All Aspects of Garden Maintenance, Plants & Shrubs Supplied, Garden Rubbish Removal, Fully Insured

Garden and Tree Service Tel: 07956 311901  
Local, Friendly and Reliable Email kev@2menwenttomow.co.uk

Tree Surgery (NPTC Qualified)  
All Types of Tree Work Undertaken  
Contract Grass Cutting  
Beds & Borders Maintained  
Pruning and Hedge Cutting  
Planting

**FREE ESTIMATES!**

**L. & J. GULWELL**

Independent Family Funeral Directors

1 Quaker Lane • Thornbury

Tel: (01454) 418779

24hr Service

email: info@funerals.uk.net www.funerals.uk.net

Private Chapels of Rest

**COMPANION AND DRIVING SERVICE**

Driving Miss Daisy®  
We're There For You

**Now taking bookings in your area!**

- For people of all ages unable to drive but wish to remain independent
- Supported trips to the doctor, hospital, shops, bank, hairdresser, vet, etc.
- Social outings, holidays, help at home and much, much more
- DBS checked and First-Aid trained
- Dementia friendly
- Wheelchair Accessible Vehicle
- Fully Licensed

To book your Daisy  
**07951 079 558 / 0333 014 6211**  
northbristol@drivingmissdaisy.co.uk  
www.drivingmissdaisy.co.uk

**Top quality Nursing and Residential Care**

**Beech House**

Beech House Care Home provides excellence in all aspects of care for all our residents, offering the best in nursing care for the elderly and residential care for people with a diagnosis of dementia.

Our unique care service includes:

- beautiful gardens
- purpose built homes with 24/7 air circulation
- spacious rooms and wide corridors
- top quality chefs
- television with DVD and telephone in each room
- wheelchair provision at no additional cost
- high technology baths and walk-in showers
- regular minibus trips
- programme of interesting and stimulating activities

**RECENTLY RATED Outstanding by Care Quality Commission**

To arrange a visit, telephone **01454 412266**  
For more information see [www.bristolcarehomes.co.uk](http://www.bristolcarehomes.co.uk)

**Bristol Care Homes**  
providing a unique care service



## Autumn Supper

This is a reminder that the 2022 Olveston Parish Hall Autumn Supper will be held on Saturday 15th October.

AHM Caterers will serve a two-course meal followed by coffee/tea and chocolates. Lewis and Furneaux 'In Concert' will provide the post supper entertainment.

Tickets £15 per person. Doors open at 6.45. If you are interested, please contact: [patsavage1948@icloud.com](mailto:patsavage1948@icloud.com) Payments can be made at the door by cash or card.



## News from St Mary's

Debbie Harries

### Pet Service

Sunday October 9<sup>th</sup>, 10am

Come and join us for our annual pet service. All pets welcome with well-behaved owners!

### Advent Windows

Here is another reminder about the Advent Windows. If you would like to design a window for our 'living advent calendar', that would be great. It is lovely to see the village windows being lit up during December as we prepare for Christmas. For more details contact Debbie [oboe-debbie@live.co.uk](mailto:oboe-debbie@live.co.uk) or 07870557961

## Alveston Gardens Association



The Intrepid Marianne North with Gina Merrett-Smith

Monday 3<sup>rd</sup> October 2022

7.30pm in Alveston Jubilee Hall

All welcome – Visitors (£3)

*NB This presentation was originally scheduled for July.*



www.olvestonpreschool.co.uk/pilning-site

# Pilning Pre-School

**NOW OPEN!**

Offering amazing childcare to children aged 2-5 at the heart of our local community.

Pilning Village Hall  
Open 9:00am - 3:00pm  
Tel: 01454612074

Find us on Facebook

## Friends of St Mary's

The prize winners in the September draw, held on 1st September 2022 were:

Amount	Number	Name
£150	397	Mr & Mrs Pearce, Old Down
£75	327	Mrs M James, Olveston
£50	332	Mr & Mrs R Garlick, Olveston
£25	558	Mrs S Chick, Olveston
£25	443	Mrs J Skinner, Sneyd Park
£25	432	Mrs J Prothero, Buckover
£20	246	Mr & Mrs M Gibson, Tockington
£20	608	Mrs E Marsh, Tockington
£20	338	Mrs C Phillpott, Tockington
£20	212	Mr J Mason, Tockington

If you are not yet a member and wish to join the lottery, please telephone Andy Phillips on 01454 614890 or email [andisp28@hotmail.co.uk](mailto:andisp28@hotmail.co.uk).

Don't forget if you're not in – you can't win!



## Almondsbury Surgery

Almondsbury Surgery is very proud to announce the results of the GP Patient Survey 2022 which rated us within the top 10 best rated surgeries in Bristol, North Somerset and South Gloucestershire, scoring an overall satisfaction experience of 93%. The survey contacted 2.5 million people between January and April of this year and just under 720,000 forms were returned, representing a 29% response rate.

Since the pandemic, we have seen an increase in demand and have tried to tailor a service to meet the needs of our patient population. The walk-in surgery was replaced by a telephone triage service, and we are continually assessing our appointment structure to increase face to face contact in a safe

 **PawsPetCare**  
...simply for the love of animals

Providing care for your pets  
when you need it

Contact Helen for a friendly and reliable service  
07493 153520 or [enquiries@pawspetcare.com](mailto:enquiries@pawspetcare.com)  
[www.pawspetcare.com](http://www.pawspetcare.com)

## Frontline Martial Arts

Traditional Martial Arts / Taekwondo

Mighty Mites (under 10's): Fridays 4.30-5.15pm at  
Juniors (ages 10-13): Mondays 7.15-8.15pm  
Adults/over 13's: Mondays 8.15-9.45pm  
at Alveston Youth Centre



Tel: 07771 692222  
[www.frontline-ma.co.uk](http://www.frontline-ma.co.uk)

## THE WHITE HART INN Olveston



Traditional 17th Century English Pub

Catering for Parties and Functions  
Wide variety of cask & keg beers  
Skittle alley & pool table available  
Book now for Skittle Matches  
Award winning courtyard garden

**Telephone: 01454 612175**

## SEVERN SIDE TAXIS

**SIX SEAT COMFORT  
AIR CONDITIONED CAR**



**AIRPORTS  
BUS STATIONS**

**HOSPITALS  
EVENINGS OUT**

**RING STEVE WARD  
07879 601011**

## FRANCIS DESIGN & BUILD Carpentry & Building Services

**For all aspects of carpentry**

**Doors, Skirting, Kitchens, Fencing,  
Decking, Stairs, Timber frame etc.**

**Call Craig on 07970 514409  
(or, if busy)**

**email: [craigyoung0308@live.co.uk](mailto:craigyoung0308@live.co.uk)**

way and will be looking to reintroduce the walk-in surgery in some form in the future. Although routine daily appointments may be limited, it is important to note that genuine urgent medical needs will continue to be assessed by the Duty GP each day. We also encourage the use of other local services, such as pharmacists for minor ailments.

We recognise that there are some areas for improvement, and we continue to seek the opinion of our Patient Participation Group (PPG) to deliver a high-quality service to patients. New PPG members are always welcome, so please contact the surgery if this is of interest to you.

## Autumn/Winter Vaccinations

Almondsbury Surgery will be offering FLU and Covid vaccinations to eligible patients from October 2022. We will contact eligible patients when appointments become available.

Eligible groups include:

- Care Home Residents
- Frontline Health & Social Care Workers
- Age 65+
- Pregnant women
- Under 65 at risk with a chronic disease as listed below:
  - Coronary Heart Disease
  - Diabetes
  - Asthma (requiring inhaled or systemic steroids, or causing hospital admission in the last year)
  - Chronic Renal Disease
  - Chronic Liver Disease
  - Chronic Respiratory Disease
  - Immunosuppression
  - Stroke or TIA
- Carers
- Close contacts of immunocompromised individuals
- Children aged 2 or 3 years
- 50 to 64 year olds will be eligible after 15<sup>th</sup> October 2022

School Campaign – vaccine to be administered by schools, not surgery:

- Primary school children (unless in an at-risk group)
  - Secondary school children in Years 7-9 (unless in at risk group)
- To be extended to years 10-11 subject to availability of vaccine



## Severnside Heating & Plumbing



- Installations
- Servicing
- Repairs

Working locally since 2003. An experienced heating and plumbing engineer. For a no obligation quote please call Mike  
Mob: 07554 825813 Tel: 01454 613780



Sockets, Lights, Security Lighting, Landlords Reports, Inspection & Testing, Consumer Units, Electric Heating, Rewires, New Builds, Garden Electrics, Car Charging Points, Solar PV, and More..

**Your Local Electrician Richard Corney**



**01454 633 336**  
laelectrical.com

## Baby and Toddler Music!



Have fun and enjoy music with your child  
Meet others and share music as well as a cuppa and maybe cake  
Suitable for ages from 0-4 with a supporting adult of any age

10:30am Wednesdays in Severn Beach Village Hall

£2-5 for an hour session dependent on numbers

FFI Contact Janet Harrison [janet\\_harrison@outlook.com](mailto:janet_harrison@outlook.com) or 07562 212435 or turn up to a session



**"The Friendly pub  
where you arrive as  
our Guest and leave  
as our Friend"**

## BOARS HEAD AUST

01454 632278

- Your local friendly Village pub
- Open 7 days a week
- Food Served from 12.00pm to 9pm every day
- 1<sup>st</sup> Friday of the month is Quiz Night
- Breakfast Available
- Chefs Table Food Experience
- Parties Catered for
- Open Log Fires
- Real Ales and Premium drinks available
- 5 star Food Hygiene rating

MAIN ROAD, AUST, BS35 4AX

## Olveston and Tockington WI

*Angela Green*

There will no doubt be the quiet hum of happy concentration at WI this month, as we all work on our individual hand-crafted greetings cards, under the encouraging tuition of one of our own members, Issy Phillips. The results last time we did this were most attractive. So come to WI for a craft evening and see how pleased you are with what you make!

7.30pm on Tuesday 11th October in Olveston Parish Hall.

## Severn Vale Probus Club

We are a group of retired PROfessional and BUSiness men who meet at Thornbury Golf Club at 12 noon on the third Tuesday of each month. We have lunch followed by a presentation by a guest speaker. We invite our partners to lunch in August and for a Christmas Lunch in a local hotel in December. We arrange visits to places of interest, the latest one was to the construction site of the new power station at Hinkley Point - with more planned.

If you would like to join us, please contact our secretary Andy Dewar on 01454774201 or [andrewdewar19@gmail.com](mailto:andrewdewar19@gmail.com).

## The Olveston Feoffees

*John Gunnery*

Never heard of them? Well, 'feoffee' is a very old word which arises from the medieval feudal system under which the whole country was owned by the King, who passed land down to allies, who became land holders of a fief or fee, in exchange for payment to the King. However, passing land to groups of land holders called 'feoffees' allowed them to keep the land and, since some was given to the church, its trustees were widely known as Feoffees.

When St Mary's spire burned down in 1605, Olveston Feoffees may have already existed and since the tower was rebuilt in the astonishingly short time of one year and there is no evidence of a major donor, might it have been funded by the sale of land?

In 1955 this really did happen because the church roof had to be replaced. WW2, followed by heavy taxation, had limited the ability of local donors to offer their support and the present grant system had yet to develop, so the only way to save the church was for the Feoffees to sell some of their assets. Over the next several years their capital fund was carefully rebuilt so that help

**motion**  
motiondesignsprint

**Do you know we print the Meeting Point Magazine?**

We also print for lots of local clubs, events and businesses.

Based in Severn Beach we offer convenient off-road parking right outside our door!

We print everything from Wedding Stationery to Business Stationery

Our professional design and modern printing techniques have saved time and money for lots of people.

**Fast, efficient and professional.**

Why not let us print for you?

**01454 631289**  
info@motionprinting.co.uk  
www.motionprinting.co.uk

ALMONDSBURY PHYSIOTHERAPY AND SPORTS INJURY CLINIC

**Louise Brinson**  
Chartered Physiotherapist, hpc reg

Almondsbury Surgery, Sundays Hill  
Almondsbury, BS32 4DS

Tel: 07786915442  
Fax: 014540615745  
E-mail: [physiolouise@hotmail.co.uk](mailto:physiolouise@hotmail.co.uk)

Also at Aztec Spa Leisure Club

**ACE1**  
Window & Gutter Cleaning

**Window Cleaning**  
**Gutter Cleaning & Repair**  
**Fascia & Soffit Cleaning**  
**Conservatory Roof**  
**Solar Panel Cleaning**  
**Power Washing**

**M: 07590 201264**  
**T: 01454 436162**

 Gleaming Insurance

**Olveston and Tockington**  
*Parish Hall*  
07780 515317

*A great venue for :*

- Fitness
- Parties
- Public events
- Music & Dance

Check availability & book online at [www.olvostonparishhall.co.uk](http://www.olvostonparishhall.co.uk)

*"Our newly decorated Hall"*





could again be given for the £250,000 reordering in the interior of the church a decade ago.

By 2008 it had become clear that the tower was going to need a great deal of work. £230,000 is a massive amount of money for a rural parish to collect, but the Feoffees offered a sum in advance so that the church was able to create confidence for the many charitable trusts that now exist for this purpose and the funds were found. This work, described in Meeting Point over the last 2 years, has been completed and won a Diocesan Advisory Committee Award in June.

Our church, the biggest, oldest, and most beautiful building in the parish, was founded over 800 years ago. Work on its improvement never stops and like all buildings, never will. Before work had been completed on the tower, the drains were found to need attention and the boilers need replacing. The five yearly Quinquennial Review, required of all churches, is due - perhaps showing the need for more urgent action.

It is not always appreciated that the costs of building work to churches are paid for by their church members and when the buildings are Listed as of Architectural and Historic Importance - as is St Mary's - grade 2\* the work must be done to very high and expensive standards. Normal running costs, maintaining worship, helping the clergy and paying to the diocese its 'parish share' are regular responsibilities and very expensive, so the additional cost of the maintenance of such an ancient and important building might prove too much.

To have a charity, independent of the church, whose sole responsibility is to collect money to maintain the church building, is to offer the church a wonderful and necessary support. The Feoffees, a centuries old charity, now has a more modern and understandable title - Olveston Church Building Trust. Registered with the Charity Commission and with local trustees, its sole objective is to provide funds for the maintenance of St Mary's Church, Olveston, money which cannot be used for any other purpose.

If you enjoy the church as a beautiful centre to the village, even if you only use it sometimes, you may feel that a contribution to 'keeping the roof on' would be worth making. If so, there are always leaflets in the bookcase to the left of the main door telling you more about the Trust and the ways in which gifts can be made. The trustees of Olveston Building Trust are grateful for your interest, and we hope to hear from you.

**XL Plumbing & Heating Solutions Ltd**

- General Plumbing
- Boiler Installation, Servicing & Maintenance
- Gas Safety Certificates
- Bathroom Installation & Tiling

Contact Mark Mob: 07738 726803  
Email: [xlplumbing@hotmail.co.uk](mailto:xlplumbing@hotmail.co.uk)  
Tel: 01454 549008  
Web: [www.xlplumbing.co.uk](http://www.xlplumbing.co.uk)



*Bristol Carriage Masters*

- Religious or non-religious funerals
- Bespoke funerals for burial or cremation
- Fully guaranteed pre-paid funeral plans
- Direct cremations



177 Crow Lane, Henbury, Bristol, BS10 7DR  
Telephone: 0117 950 8066  
Website: [www.bcm-funerals.co.uk](http://www.bcm-funerals.co.uk)  
Email: [admin@bcm-funerals.co.uk](mailto:admin@bcm-funerals.co.uk)

## Windmillcare Homes

— great places to Live



### Windmill House

The original, elegant home in a delightful rural setting with 2 acres of beautiful gardens delivering unrivalled care

01454 413818



### OSBOURNE COURT

Our brand new purpose-built home providing exceptional specialist dementia care in the heart of the village of Stoke Gifford

0117 944 8700

Residential, Short-term Respite  
and Day Care available

[enquiries@windmillcare.com](mailto:enquiries@windmillcare.com)

or [www.windmillcare.com](http://www.windmillcare.com)

## 'Indawes - Outdawes'

Decorating and  
Home Improvements

Painting | Wall Papering  
Floor Laying

Martin Dawes 07720 509653  
[martin.dawes@live.com](mailto:martin.dawes@live.com)

Your advert could be  
here and reaching  
1,500 households

Contact Bernard  
[meetingpointadvertising@  
gmail.com](mailto:meetingpointadvertising@gmail.com)

## Old Down Cricket Club

Tony Gardner

### 150 Club Winners September 2022:

£50 Simon Panes  
£15 Stuart Bushell  
£5 Tony Gardner

### Latest £25 Bonus Ball Winners:

27/08/22 Andrew Kitchen  
03/09/22 Alex Grosvenor



Victory by the 1st XI over University Staff on Saturday 3rd September meant that they ended as League Champions and will now play in Bristol & District League Three next season.

*The victorious team is pictured here on the left.*

## Alveston Singers

Bob Dale

On Saturday October 8<sup>th</sup>, Alveston Singers, under their conductor James Davies, are hosting a 'Come and Sing' afternoon to which everyone is invited. For this light-hearted get-together we have chosen Vivaldi's Gloria, as being a happy and exciting piece for everyone, irrespective of your singing experience or ability to read music.

From 1pm to 4pm we'll get acquainted, or re-acquainted, with the music (scores will be provided). Then, after a well-deserved cuppa, we'll open our doors at 5pm to anyone who would like to come and listen to the results. All this takes place at Alveston Methodist Church. No need to book - just turn up on the day. There will be a charge of £5 to cover our costs and any surplus, plus any donations from the performance, will be donated to charity.

Further details from Sue: 01454 600674.

**Tel: 01454 885766**  
**Mob: 07724 166917**

# Ridge

## Roofing and Property Maintenance

Roofing ❖ Chimney Repairs ❖ Lead Work  
Guttering ❖ External Painting  
General Maintenance ❖ **FREE Estimates**



## D-CR

### DOMESTIC APPLIANCES

**Tel: 01454 850522 - Mobile: 07917441539**  
**Email: d-cr@live.co.uk - Web: www.d-crdomesticappliances.co.uk**

### DOMESTIC APPLIANCE REPAIR SPECIALIST

- WASHING MACHINE
- TUMBLE DRYER
- DISHWASHER

- FRIDGE FREEZER
- COOKER
- HOB OR HOOD

**Fast, friendly and efficient service**  
**Sales - Service - Repair**



## EARTHWORKSUK

We offer a range of recycled and quarried products including 6F5, type 1, topsoil and decorative stone. These can be delivered straight to you on site or collected from us at our yard in Cromhall. Check out all we can offer you on our website or contact us using the details below.

**Skip Hire**

**Top Soil**

**Recycled Aggregates**

**Grab Lorry Hire**

**Tipper Hire**

info@earthworksuk.co.uk www.earthworksuk.co.uk  
Orders Line: 07782472727  
Bristol: 01179 828265 - South Glos: 01454 501037




### *Lending with Heart and Mind*

South Gloucestershire Council fund  
a not-for-profit loan scheme for homeowners  
and landlords\*.

We understand the expense of maintaining  
your home and we work with you to take the  
stress out of funding repairs, improvements or  
adaptations.

We see you as an individual, not a credit score.  
Our knowledgeable team of advisers will guide  
you through the process of applying for a home  
improvement loan.

For a no-obligation assessment  
or more information visit  
[www.lendology.org.uk](http://www.lendology.org.uk) or call 01823 461099

Heatherton Park Studios, Bradford on Tone, Taunton, TA4 1EU

\*subject to eligibility

## Allotment Association News



What's the best way to get rid of bindweed?

Which vegetables can best tolerate a hot dry summer?

How can I deal with blackfly on climbing beans?

Would you like answers to these questions? Do you have other growing problems you'd like solved? If so, come along to the Allotment Association (OPAGA) AGM and join in our Allotment Question Time session. We will have a panel of local experts offering advice and ideas.

The AGM is at 7.30pm on Friday November 11<sup>th</sup> and will be followed at about 8.15pm by our question-and-answer session.

All are welcome, but if you are not an OPAGA member please could you let us know you will be coming, as refreshments will be served. Please email the secretary at: [janwinterolveston@gmail.com](mailto:janwinterolveston@gmail.com)

If you are interested in having an allotment, there may be a few plots available this autumn – do get in touch if you'd like to know more. Please email the chair, Marlene Baker, at: [opaga.chairman@gmail.com](mailto:opaga.chairman@gmail.com)

## Table Top Sale

Thornbury Volunteer Centre Christmas Table Top Sale  
Alveston Methodist Church Hall  
Saturday 5<sup>th</sup> November 10am-2pm.

Tea/coffee/homemade cakes, cards/ produce, cards, vintage items.  
Giant Christmas raffle. Sellers tables can be booked for £10 each. Please contact: [mail@volunteer-thornbury.co.uk](mailto:mail@volunteer-thornbury.co.uk) or 01454 413392 and leave a message. All profits go to Thornbury Volunteer Centre.



# LINELA

embroid | print | promote

One place for everything promotional.  
Specialising in embroidery,  
printing and branded gifts



**T Shirt Printing**  
**Sports wear**  
**Work wear**  
**School wear**  
**Promotional Products**

Call us: 01454 615300

Email us: [sales@linela.co.uk](mailto:sales@linela.co.uk)

[www.linela.co.uk](http://www.linela.co.uk)



**Livewire Electricals**  
Electrical & Mechanical Solutions



Domestic, Commercial  
and Industrial Installations

All electrics for new build, extensions and  
alterations to satisfy mandatory Building  
Regulations. Landlords safety inspections  
Portable Appliance Testing (PAT)

Electrical and electronic service and repair  
For 24 hour call-out service available please  
call Peter Jones: Tel: 07880 858785

Email: [pete.livewire@blueyonder.co.uk](mailto:pete.livewire@blueyonder.co.uk)

Local number Tel: 01454 613482

Visit our web site at  
[livewire-electrics.co.uk](http://livewire-electrics.co.uk)

**BonneFreshClean**  
Carpet & Upholstery Cleaning Specialists

Love the look and smell of  
clean and fresh carpets and  
upholstery?

Bonne Fresh Clean brings to  
you a professional carpet and  
upholstery service that will  
leave them sparkling and fresh.

Call for a free  
no obligation  
quote today!

- Thorough, gentle deep cleaning, no residues
- Child and pet friendly treatments
- Latest industry approved qualification and full insurance



Bonne Fresh - Relax and enjoy beautifully clean  
and fresh carpets and upholstery!

T: 01454 436001 M: 07774 908410

W: [www.bonnefreshclean.co.uk](http://www.bonnefreshclean.co.uk)

44 Townsend Lane, Almondsbury, Bristol, BS32 4EQ

**Cookin' On Gas Ltd**



Repairs & Sales of all  
domestic appliances:



Gas & Electric Cookers and Hobs  
Washing Machines, Dishwashers  
Tumble Dryers

[www.cookinongas.co.uk](http://www.cookinongas.co.uk)  
[enquires@cookinongasltd.co.uk](mailto:enquires@cookinongasltd.co.uk)

Matt Cole  
1 Olive Gardens Tel 01454 851545  
Alveston Mob 07715 705670



ARMSTRONG  
ARTS  
GROUP

## Nosferatu

A superbly sinister evening to prepare  
you for Halloween!

Sunday, 30<sup>th</sup> October at 730 pm Nosferatu with music by Minima  
Turnberries. Tickets £12

Minima is a Bristol-based four-piece group, with instrumentation including  
cello, double bass, baritone guitar, acoustic and electric guitars, mandolin,  
autoharp, dulcimer, synthesizer, glockenspiel and drum kit. Their main  
repertoire includes set scores to classic silent movies such as the original  
Phantom of the Opera featuring Lon Chaney, Alfred Hitchcock's The Lodger,  
and German horror films Nosferatu and The Cabinet of Dr. Caligari.

The AAG has booked Minima to perform their score for Nosferatu - a 1922  
silent German Expressionist horror film - directed by F. W. Murnau and  
starring Max Schreck as Count Orlok, a vampire who preys on the wife (Greta  
Schröder) of his estate agent (Gustav von Wangenheim) and brings the  
plague to their town.

This silent era's iconic masterpiece is set in Transylvania and has an eerie  
Gothic feel. Darkly humorous but tender, immerse yourself in a haunting world  
of picture and sound. This unique experience will mark Halloween in a most  
original way!

[AAGThornbury@gmail.com](mailto:AAGThornbury@gmail.com) or 01454 850933

## Thornbury and District League of Friends

Thornbury and District League of Friends celebrated a very successful year of  
community grant awards and support with over 100 guests at our Summer  
Party in late July at Porch House. We all enjoyed a plentiful afternoon tea and  
an uplifting performance by the Thornbury Good Afternoon Choir. Several of

## Beauty at the Barn

4, Grey Gables, Vicarage Lane, Olveston  
For appointments telephone Nicola on  
01454 201717



Jessica Manicures  
GEleration Nails  
Shellac Nails  
Jessica Pedicures  
Spray Tanning  
Waxing  
Ear Piercing  
Eyelash Perming  
Eyebrow Shaping  
Eyelash tinting  
And more....  
Evening appointments available  
Gift vouchers available



## Olveston & Tockington Tennis Club

*"Your local tennis club, next to Olveston Parish  
hall"*

**Make 2022 the year to get back  
on court.**

**Coaching for all ages.**

**Fabulous clubhouse with changing  
facilities, kitchen, TV and table tennis.**

**Call Martin 07720509653**

**Everyone welcome**



Tel: 07887 652358  
Jed's N.E.A.T. Services  
(Nose Everything About Technology)



**Technology brings us together and makes life easier. But.....**

**What should you buy?**

**How does it work?**

**And what if anything goes wrong?**

**Phones / laptops / tablets / TV's / Smart home systems. I can.....**

- Help you choose what's right for you
- Teach you how it works
- Fix existing 'tech' problems

**HOME VISITS – VIRTUAL REMOTE ASSISTANCE – PERSONAL SHOPPING**

**PRICING POLICY – Please pay me what you think is fair – SIMPLE ☺**

### ABOUT ME

Jed Williams – I'm 17 years old, live locally & have had my own business for over 3 years  
Email: [me@jedwilliams.co.uk](mailto:me@jedwilliams.co.uk) Website: [myneat.co.uk](http://myneat.co.uk) Tel: 07887 652358

our grant recipients attended along with many friends and supporters of the League of Friends, so a big thank you to all our guests and, of course, to the choir for entertaining us with such a lively and eclectic mix of songs. There was also the inevitable raffle which was very well supported and much appreciated (especially by the winners!)

This year's grant-giving programme encourages local organisations to apply for a grant towards any health-related project supporting our charitable aims for which they might need our financial assistance. We welcome your interest and will consider all requests for help carefully.

The 2022 programme will operate as follows:

21<sup>st</sup> October: Grant Programme Launch event 7.30pm at St Mary's Church Hall;

18<sup>th</sup> November: Last date for Grant Application submission

25<sup>th</sup> November: Announcement of Grants awarded.

In the meantime, please contact Andrea for further information regarding the above programme [abates1101@msn.com](mailto:abates1101@msn.com) or 07736 421272.

The last event of the year will be our AGM to be held on 1<sup>st</sup> December at 7.30pm at St Mary's Church Hall.

We desperately need several more active members to help us put on future events, so if you are interested in assisting in any way do please contact Andrea. We look forward to another rewarding year of supporting health and wellbeing in our local community.

NB For news of future events/updates please see our Facebook page:  
<https://www.facebook.com/pages/category/Charity-Organization/Thornbury-and-District-League-of-Friends-520474571777943/>



## Thornbury and District U3A

Have you recently retired or reduced your commitments leading up to retirement? Are you new to the area and looking to make new friends? Thornbury u3a promotes keeping us mentally and physically engaged and active in an enjoyable and friendly atmosphere. *Learn, Laugh and Live* is the u3a motto and aims to provide opportunities for members to do so without having to travel too far or enrol on expensive courses.





**Delivering the highest standards of homecare in South Gloucestershire for 18 years**

Inspected and rated  
**Outstanding** ☆  
Care Quality Commission

good care guide  
★★★★★

Great British Care Awards  
2016 WINNER

Premier Homecare is the leading homecare provider in North Bristol and South Gloucestershire, having cared for over 2,000 families, ensuring they are safe, healthy and looked after

**Call today for help with a loved one**

**PREMIER HOMECARE**

**0117 959 2013**  
www.premier-homecare.com

- Short and long term home help
- Flexible hours
- Bespoke care support
- Highly trained and reliable carers
- Personal Care
- From cleaning to 24 hour Live-In care



**el cuisine**

Catering for any occasion  
Private parties, Birthday and Anniversary Celebrations,  
Weddings, Funerals, Corporate Events,  
Formal Dinners, Shoot Lunches... whatever the occasion

www.el-cuisine.co.uk Please contact Emma 07931952939 info @el-cuisine.co.uk

**Tockington Manor School and Nursery**  
for boys & girls aged 2 - 13

Discover our

- Family approach to education
- Envious Senior School entry
- Year 7 & 8 Pathway Programme
- Wrap-around care
- Small friendly classes
- Excellent facilities




Book your private tour at a time convenient to you  
01454 613229

We already have over 1,500 members and around 80 different groups meeting at various venues throughout the area but there is always room for more! The groups mainly meet during the day and range from Archaeology to Walking; some meet weekly, other less often and they include physical activities, crafts, board and card games, organised visits to gardens, concerts and theatre as well as purely 'educational' topics.

Our next Welcome Meeting will be held on Monday 17<sup>th</sup> October at 3.30pm in St Mary's Church Hall, Eastbury Rd, Thornbury. Please come along; we would love to meet you.

For further information visit our website: [www.thornburyu3a.org.uk](http://www.thornburyu3a.org.uk) or for membership enquiries: [membership@thornburyu3a.org.uk](mailto:membership@thornburyu3a.org.uk)  
Alternatively phone our Membership Secretary, Jackie Gitsham, on 01454 858438 or Chairman, Norman Taylor, on 01454 418396.



## Nutty Noah



Come along kids, mums and dads, take a seat and get ready to go nuts with Nutty Noah at this fabulously funny, musical and magical entertainment show.

Bringing his own brand of side-splitting nuttiness to the Chantry Community and Arts Centre, Nutty Noah's award-winning show includes cheeky original songs and amazing magic. Nutty Noah mixes music with humour and plays some very unusual instruments, one of which he invented himself. Nutty Noah is one of the most in-demand family entertainers in the country, which has won him the title 'The King of all things silly!' (Ben Elton). Grab a seat grown-ups and have as

much fun as your kids. As seen on CBBC's The Slammer, Crackerjack and Channel 4's 8 out of 10 Cats does Countdown.

The Armstrong Arts Group presents 2 performances at the Chantry Buckingham Room at 11.00am and 2.00pm on Sunday 2<sup>nd</sup> October.

Tickets from [AAGThornbury@gmail.com](mailto:AAGThornbury@gmail.com) or phone 01454 850933, £10 for adults and £5 for children under 16.



Natalie Gladstone BSc(Hons) Ost

## OSTEOPATH

Back & neck pain, arthritic/ joint pain,  
sports injuries, pre /post natal, whiplash,  
cranial treatments, rehabilitation Pilates.

Tel: 07870 219 249

www.nataliegladstoneosteopath.co.uk

OLD DOWN HILL, TOCKINGTON

Easy parking. Day & evening appointments.  
REGISTERED: EXPERIENCED: PROFESSIONAL



**Digger and Driver Available**  
Out-Door Services

## A. D. D. PLANT

Groundwork, Digging & Clearing  
Turfing, Any outdoor work

Tel: 01454 417372

Mobile: 07866 407683



keeping your garden  
beautiful...

ask us about  
LAZYLAWN

- LazyLawn - superior artificial grass supply and installation - licensee for Bristol & South Wales
- landscape design and build with 25 years experience
- tree surgery
- garden makeovers
- regular garden maintenance

**Garretts Gardens  
and Landscapes**

for Garretts Gardens or Landscapes  
t 01454 614111 m 07974 109919  
info@garrettslandscapes.co.uk  
www.garrettsgardens.co.uk

Come rain or shine,  
lisa costa estate  
agents have the  
experience and  
knowledge to take  
you smoothly through  
the moving process.



**lisa costa**

RESIDENTIAL SALES & LETTINGS

53 High Street | Thornbury | BS35 2AR  
01454 279734 | sales@lisacosta.co.uk | lisacosta.co.uk

Please note: If your property is currently on the market, the terms and conditions of your Existing agency agreement must be considered before instructing ourselves.

## Short Walks without Wellies for Autumn

You've probably done them all before, but here's a reminder of a few quiet local walks that don't require wellies and mostly go and come back along the same route. Please take care as these walks are on roads with no pavements. Times are approximate for the return walk. Alternatively, free packs of leaflets describing six longer circular footpath walks through fields in the parish are available from St Mary's Church, Olveston any time.

**Aust.** From the Boars Head to Old Passage, just downstream from the Severn Bridge. Ferries crossed from here for centuries. 2 hours.

**Olveston.** Up Vicarage Lane and down Haw Lane. A glorious view and a free cardiovascular exercise thrown in. 45 minutes.

**Olveston.** Down Church Hill and along The Common. Short and peaceful. 30 minutes. (You can extend this by going round the bottom of Catherine Hill.)

**Old Down.** Old Down to Lower Hazel then up to the A38 at Rudgeway. Longer and with a quaint hamlet and two easy climbs. 45 minutes.

**Littleton.** From the White Hart to Whale Wharf. Admire the elegance & setting of the Severn Bridge. 45 minutes.

**Are you a caring and sociable person?**

**Do you have a little time to spare each month?**

If you answered yes to these questions, would you be interested in helping organise activities for a new community group for carers; ex carers, people who live on their own and/or are experiencing loss & bereavement?

**New Life is creating a welcoming space to build connections, support and networks for affected people in Thornbury and surrounding area.**

Funded through Age UK Bristol and St Monica Trust, we offer group activities including board games and social trips. Please contact Elizabeth or Rose for further details. Activities will be run once a month on either 1<sup>st</sup> or 3<sup>rd</sup> Tuesday between 11.30-3pm at The Wheatsheaf in Thornbury.

It can be tough when you are going through difficult times on your own. But, if we can connect with others who have experiences similar to you and can share your stories, the world can feel a different place to help us through and re-build our lives. If this resonates with you, and you are available to give a little of your time every month to help, we would love to hear from you. Your reward is that you will be playing a part in making a positive difference to help somebody though a challenging time in their life and tea/coffee with delicious lunch provided for £5!

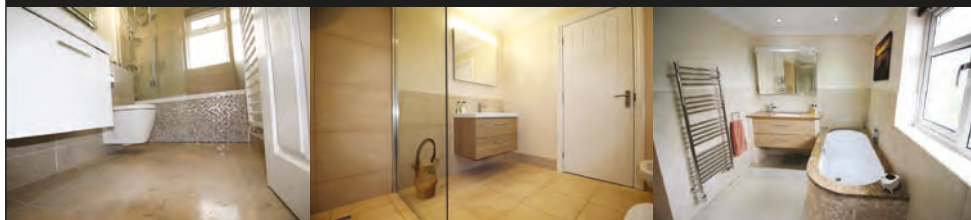
**Contact for further details with the team of New Life, Elizabeth or Rose on  
01454 414 114 or 077902 14425.**



# Paul Whittaker

## BATHROOMS & WETROOMS

DESIGN . SUPPLY . INSTALLATION



Tel: 07879 666221 . Website: [www.paulwhittakerbathrooms.co.uk](http://www.paulwhittakerbathrooms.co.uk)

### Dunkley's

Chartered Accountants  
30 YEAR ANNIVERSARY

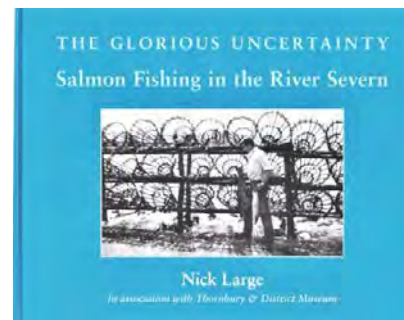
**HELPING YOU**  
MAKE THE RIGHT SOFTWARE  
CHOICE FOR YOUR BUSINESS

TALK TO US ABOUT OUR CLOUD ACCOUNTING  
**SOFTWARE PACKAGES**

T: 01454 619900 E: [ADVICE@DUNKLEYS.ACCOUNTANTS](mailto:ADVICE@DUNKLEYS.ACCOUNTANTS)

WOODLANDS GRANGE, WOODLANDS LANE, BRADLEY STOKE, BS32 4JY

## A Glorious Celebration of Severn Salmon Fishing



'The Glorious Uncertainty - Salmon Fishing in the River Severn' was written by local resident and ex-Marlwood teacher Nick Large, and is jam packed with over 120 photographs.

Nick started recording this local industry in the mid-1960s, not knowing that he was documenting the end of 1,000 years of history. The decline of the industry accelerated during the time that Nick was

investigating it. In June 2019, the Environment Agency placed a prohibition order on taking any salmon from the Severn, such has been the deterioration of stocks.

On Wed 5<sup>th</sup> Oct, Olveston Parish Historical Society is very pleased to welcome museum volunteer Tony Cherry to Olveston. After a short AGM, Tony, in an illustrated talk, will tell how Nick was persuaded, over a period of three years, to turn his copious research (including countless interviews with Severn fishermen on both sides of the river) into a book. He will explain how, when Nick unexpectedly died in December 2018, just before finishing the book, fellow museum volunteer Meg Wise took on the job of completing the work.



It was an enormous task, but it has all been worth it. The book is stunning. Nick was a brilliant photographer, and he wrote in a most engaging style. This is local history at its best and serves as a fitting tribute to its author. Copies will be on sale for £20 and would make a wonderful Christmas present.

As an added bonus, we are delighted also to welcome Christabelle Tymko,

who worked her father's ranks of salmon putchers at Oldbury-on-Severn, when he went off to war. Come and join us for a very fishy evening!

Wed. 5<sup>th</sup> Oct. 7.30pm. Methodist Church, The Street, Olveston BS35 4DR

All welcome! Pay on door. Annual membership: £10. One meeting: £3.



**Legal advice  
that brings  
balance to life**

Award winning legal advice  
to help you navigate change  
and plan for the future.



**Let's talk about you or your business**      [www.gl.law](http://www.gl.law) 0117 906 9400

BUSINESS SERVICES · PROPERTY · DISPUTES · FAMILY LAW · WILLS & PROBATE

- All makes servicing and repairs
- Petrol and Diesel MOT Testing
- Tyres, Exhausts and Batteries
- Air Conditioning
- Latest Bosch On-Board Diagnostics
- Vehicle Sales



**GREEN LANE  
GARAGE**  
OLVESTON

New Road, Olveston, BS35 4DX  
**01454 202030**





## Second World War Stories

Wed. 2<sup>nd</sup> Nov. 7.30pm. Methodist Church, The Street, Olveston BS35 4DR  
All welcome! Pay on door. Annual membership: £10. One meeting: £3.

The November meeting of Olveston Parish Historical Society is very near the beginning of the month (Wednesday 2<sup>nd</sup> November), so we're publicising it in this October issue of Meeting Point.

As November is the month of Remembrance, we are going to show a selection of filmed interviews carried out by Christina Wheeler, project officer for Second World War Stories, a South Gloucestershire Council-led project, carried out in association with the museums of South Gloucestershire. In these films, Christina asked older South Gloucestershire residents for their memories of the Second World War. The project was completed as recently as 2019 but sadly, already, some of the participants are no longer with us.

Although the interviewees are elderly, the stories they tell are of themselves as lively, energetic young people. They talk of their wartime experiences, the work they did, the people they met, the hardships they underwent. Sometimes, romantic relationships develop. Occasionally, prejudice is encountered. There is the ever-present anxiety about air raids and worry about loved ones overseas in the armed forces. Some families had most of their children in the services. But these are people who survived and who developed a resilience and a certain tough good humour.



*Hella Hewison*

Local places featured include Elberton, Thornbury, Tortworth and Yate. A host of local photographs from those years show people and places, some war-related but many not. They are simply pictures of everyday life at the time.

Don't miss this chance to hear first-hand testimony from remarkable people.



*Rose Kuhn*



**gsharchitects**



## FREE CONSULTATION

For further information please contact us on:

info@gsharchitects.co.uk  
www.gsharchitects.co.uk  
Almondsbury, Bristol

07780 000220

Build without planning permission

Quality design service from concept to completion

Planning, construction drawings and contract administration service tailored to suit you

Domestic, Commercial, and Sustainable Architecture.

Experienced working with Listed Buildings

Build your dream home in your garden

Development Advice and Appraisal

3D Visualisation Services

**RIBA**

## New Passage Cat Kennels

**Large Runs ~ Heated Chalets  
Licensed Cattery  
in Pilning**

**Tel: 01454 632 456  
www.catkennels.co.uk**



**Design & Planning**

Home Extensions - Change of Use - Floor Plans  
Full Planning & Building Regs drawing service  
Almondsbury based with successful local projects

contact Julian Lowther for friendly professional advice

t:0117 2591059 julian@jfl-planning.co.uk  
m:0789 0179546 www.jfl-planning.co.uk

## G.V.R PITCHER & SONS

**The Yard  
Haw lane  
Olveston  
Bristol**



**TEL: 01454 619299  
MOB: 07989 208964**

**Property Care & Improvements**



## The Bristol Ensemble with Roger Huckle



If you are lucky enough to have seen this prestigious orchestra perform before, you will know that this group of musicians delight their audience with incredible expertise. The Ensemble, Bristol's only professional orchestra, presents classical items featuring violin, flute, piano and double bass plus surprises from other guest musicians. The Armstrong Arts Group is grateful to Roger Huckle and the Ensemble for supporting the arts in Thornbury and agreeing to present another concert for us.

This concert celebrates the 150<sup>th</sup> birthday of Ralph Vaughan Williams:

- Fantasia on Greensleeves
- Suite for Viola – Group 1 – Prelude, Carol and Christmas Dance
- Lark Ascending – violin, piano and string quartet
- On Wenlock Edge – Vaughan Williams

The concert takes place at The United Reformed Church, Chapel St., Thornbury, BS35 2BA on Saturday 15<sup>th</sup> October at 7.30pm. Tickets £18 including a drink are available from [AAGThornbury@gmail.com](mailto:AAGThornbury@gmail.com) or 01454 850933

## October at Thornbury Library

**Local performers, The Red Herrings, present The Perilous Phlogisticon.**

A steampunk plot of murder and mystery

Saturday 29<sup>th</sup> October at 2pm.

Tickets £3.20 Library Members £6.40 Non-Members

**Stay Safe Online Course with South Glos Community Learning**

A course to help you understand online security and support you to find ways to protect yourself online. You will learn how to recognise threats and the steps you can take to reduce online risks. The course is suitable for all those who wish to re-engage with learning in order to improve their wellbeing, upskill, and progress to further learning or employment.

Wednesday 12<sup>th</sup> 19<sup>th</sup> and 20<sup>th</sup> October 2022

10am – 12 noon

To book a place, email: [Aimee.Hilbourne@southglos.gov.uk](mailto:Aimee.Hilbourne@southglos.gov.uk)

**CAR - VAN - MINIBUS**

**SELF DRIVE - LOW-COST - SHORT/LONG TERM  
WIDE VEHICLE SELECTION - CONTRACT HIRE**

- Fully Comprehensive Insurance
- Extra-Low Off Peak Rates
- No Hidden Charges
- Breakdown Cover
- Cars
- Minibuses
- Transits
- Sprinters
- Lutons & Tail Lifts

**THORNBURY**  
SELF DRIVE HIRE

Established Over 20 Years

www.tsdhire.co.uk  
Mob: 07768 232424  
Email: info@tsdhire.co.uk

**01454 414111**

COOPER ROAD, THORNBURY IND. EST., THORNBURY, BRISTOL BS35 3UP

**THORNBURY AUTOBODIES**

**Car & Commercial Body Repairs**

- Crash Repair • Re-Sprays • Dent Repair
- Spray Booth Facilities • Full Body Jigging • Recovery
- Top Standard Of Work
- Fully Insured
- Insurance & Private Work

Courtesy Vehicles • Free Estimates • Over 25 Years Experience

**THORNBURY**  
**01454 419985**

Email: thornburyautobodies.ps@gmail.com www.thornburyautobodies.co.uk  
Cooper Road, Thornbury Industrial Estate, BS35 3UP

**WJC**

**Plumbing & Tiling**

Bathroom & Wet Room Design & Installations  
Tiling • General Plumbing  
Kitchen Installation • Plastering

**Billy Cook**  
WJC Plumbing & Tiling

07748 085 920  
wjcpumbing@outlook.com

### Have You Read...? A book group for everyone

Come and enjoy an open book group with a difference. No set novel to read. Just drop in for an hour for refreshments and a chat.  
Friday 7<sup>th</sup> October 2pm-3pm

### BFG's (Book Focus Group) for Year 7 and up

Come and spend an hour discussing your favourite books with others. A great way of finding brilliant new authors for you  
Thursday 13<sup>th</sup> October 4pm-5pm

### Computer Support 1-1

Book a session with our computer volunteer for IT and digital support  
Every Friday during October 9.30am, 10.30am, 11.30am

### Sight Support West of England Drop-in

Support and advice for people with visual impairments  
Monday 17<sup>th</sup> October 10am-1pm

### Home Library Service (books to your door)

Do you, or anyone you know, find it difficult to get to the library for books? If the answer is yes, please contact us to ask about our Home Library Service as we have volunteers happy to help

To book any of the above activities pop in

Email: [thornbury.library@southglos.gov.uk](mailto:thornbury.library@southglos.gov.uk) or call: 01454 868006

## Tockington and its Manor House

*Nick Fear*

In September 1898, The Bristol Observer printed a front-page article entitled 'Tockington and its Manor House'. It was an anonymous article, accompanied by a set of charming pencil drawings of the village. The style of writing is very much of its era and an extract has been reproduced here to capture the language and expressions of those times.

The article begins by extolling the view from Almondsbury Hill, and continues.....


*"Scarcely visible from Almondsbury Hill there is, nevertheless, quite adjacent to it, one of the prettiest little spots in the county, to wit, Tockington. "Tockington?" says someone, "Who lives there?", "What is its history?" The fame of the Tockington Brass Band is household knowledge in the district it is true, military music either from the regular or auxiliary military forces is now sought after and Tockington district alone revels in the glories of its own brass band.*



**TMD**  
THE MOWER DOCTOR

**GARDEN MACHINERY SPECIALISTS**  
SALES, SERVICE AND SPARES

E-MAIL: [themowerdoctor@hotmail.co.uk](mailto:themowerdoctor@hotmail.co.uk) WEBSITE: [www.themowerdoctor.net](http://www.themowerdoctor.net)  
ADDRESS: Unit 2-3 The Rearing Unit, Oldbury Lane, Oldbury-On Severn, BS35 1RF  
TELEPHONE: 01454 411 701







DEALERS FOR:

**Mountfield** **STIGA** **Cub Cadet** **BRIGGS & STRATTON** **Husqvarna** **Kawasaki** **LETESIA**  
Seeing is believing.

**optimus**  
"Optimise your Health"

Please Enquire:

Tel: 01454 528608  
Email: [info@optimuscp.com](mailto:info@optimuscp.com)  
Web: [optimuscp.com](http://optimuscp.com)

**PHYSIOTHERAPY**  
**CHIROPRACTIC**  
**PODIATRY**  
**CHIROPODY**

11 The Plain, Thornbury, BS35 2AG

**OLDOWN**  
TREE SURGEONS

TREE SURGERY AND HEDGE MAINTENANCE

PROFESSIONAL. QUALIFIED. FULLY INSURED.

[www.oldowntrees.org](http://www.oldowntrees.org)

Antony Leicester 07800512408 [info@oldowntrees.org](mailto:info@oldowntrees.org)

**EC COMPUTERS**

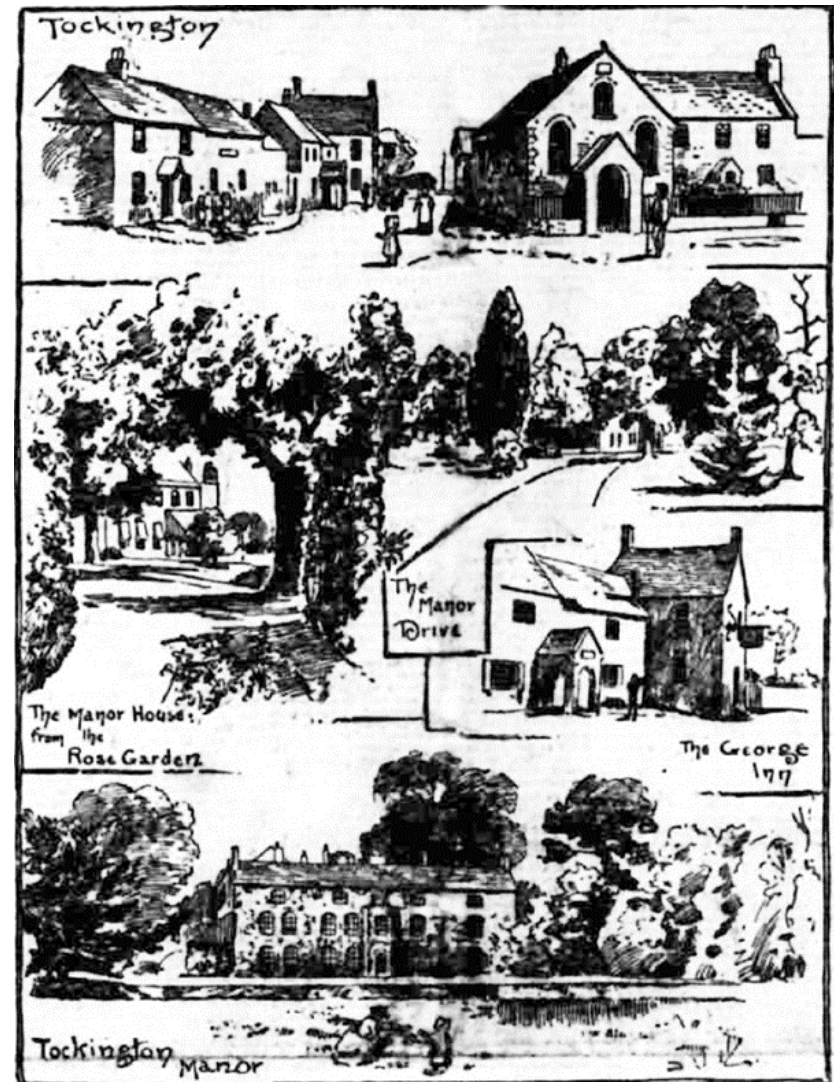
Computer support and solutions for the home and business user.

- PC/laptop repairs
- Virus removal
- Wifi/broadband issues
- Sponsors of Olveston FC

How can we help? Tel: 01454 281 500 Web: [www.eccomputers.co.uk](http://www.eccomputers.co.uk)

IT Support/Repairs Office Equipment Print Solutions Telecoms Cyber Security Managed Services Software/Database applications

Conspicuous for its beauty is the Manor House, whereat resides Lieutenant Colonel Salmon and in this item and individual Tockington has cause for satisfaction. No, there is no ghost with grey locks attached to the manor, nor are there, say, remarkable or more or less doubtful stories or terrible tragedies connected to its history, yet it is interesting withal. Connected to the Peachy family about a century ago, Lieutenant Colonel Salmon is now living within its walls and has been doing so for eight years past having previously resided at Court House.



# YOUR PC GURU

COMPUTING FOR 'MERE' MORTALS

01454 616365

- Home visits
- Computer Repair
- Phone & Tablet setup
- Home Wireless & Broadband
- Smart Home Tech
- Complete Mac support

[www.yourpcguru.co.uk](http://www.yourpcguru.co.uk)  
Technology Advice & Repairs

## JC 4x4 Ltd SPECIALIST IN LANDROVER



SERVICE • REPAIR WORK • DIAGNOSTICS • MOTS • OTHER VEHICLES WELCOME

CALL JAMES: 01454 261067 / 07966 086447



07307 727244

## Free Quotes

Domestic	Radiant heating
Commercial	Boilers
Breakdowns/ call outs	Radiators
Servicing	Plumbing
Installations	
Warm air heating	LPG, natural gas, oil



[www.edgeheatingandplumbing.com](http://www.edgeheatingandplumbing.com) [info@edgeheatingandplumbing.com](mailto:info@edgeheatingandplumbing.com)

*The exterior is indeed pretty and viewed from the lower park in front one gets a glimpse of a lovely ivy-covered frontage and though the architecture is severely plain, except for the fact of a fairly modern porch, it is by no means unattractive. Devoid of creeper is the back portion of the building yet viewed from the charming rose garden the whole is caught at an angle which is by no means devoid of architectural attractiveness. The grounds contain some remarkably well grown trees, and the finely sloping lawns and varied flower gardens are so well kept that one is compelled to admit that they are inducements to shut oneself up far from the gaze of the outer world. The huge wall skirting the Manor House on one side might lead the casual observer that this was Colonel Salmon's wish.*

*To form this opinion would be a libel on the gentleman who, as a matter of fact, is one of the busiest men in the county. It is not within the province of this article to enumerate the many advantages various persons and parishes have reaped through his instrumentality. Catching a peep of him in his study surrounded by piles of papers rich in red tape, the only conclusion that can be arrived at is that he is a busy man who works for his county because the work must and should be done and not because he expects any gratitude or any other return, except the conscientious satisfaction that there had been work to be done and he had done it."*

The article goes on to list many philanthropic achievements of Lieutenant Colonel Salmon who, as a stalwart of a number of public bodies, benefited the whole county. It also describes views from the Manor House windows, some of which are clearly wrong, such as a 'view of Portishead and Clevedon in the distance'. There is also a puzzling error in the sketches, where the drawing of The Swan Inn is, for some reason, labelled The George Inn. How the author made this mistake is a mystery.

The description of Tockington village is more than brief, as are the comments on the villagers. Undoubtedly an admirer of Lieutenant Colonel Salmon and his manor, the author spends much more time on him and his home. However, the author had visited Tockington and admired it enough produce this article, which must have delighted many villagers when it was published.

## Yours Faithfully

*Fr George Malecki,  
Christ the King Church*

How often Christ's teaching takes an accepted human value and way of thinking and turns it on its head. Time and again he uses situations he encounters to impress on us how important and necessary it is to adopt the right attitude in all things. One of the lessons he teaches is the importance of humility and how crucial it is for growth in spirituality and holiness. One of our greatest flaws as human beings is pride. Yes, it is right and proper that we





# Dave Webb

Painter - Decorator

07809 869149

01454 201640

*Reliable, professional, friendly service.  
Please ask for your free quotation*



## Squire Sweep

A chimney sweep service from  
Michael Squire

Tel: 07504 253 467

Email: [squiresweep@gmail.com](mailto:squiresweep@gmail.com)

Visit: [www.squiresweep.co.uk](http://www.squiresweep.co.uk)



**North Bristol Bathroom Showroom**  
Scan the QR code for a  
No obligation  
Survey, Design & Quotation  
Appointment

North Bristol Bathroom Showroom  
Gloucester Road  
Almondsbury  
Bristol  
BS32 4HY  
Tel: 0117 980 7419  
Email: [showroom@nbbsplumbing](mailto:showroom@nbbsplumbing)

take pride in what we do and are and learn to do all things well. So, when it comes to genuine humility, where is the dividing line between what is admirable and what is to be avoided?

In our culture and in our society, humility is often misunderstood as weakness, inappropriate mildness, submissiveness even. And yet in the Bible, the Book of Ecclesiasticus teaches us that humility is the basis for that essential quality, wisdom. Wisdom gives us the ability to see situations, life, people as they really are. And that reality includes an awareness of our own qualities and talents. Humility is the practical acknowledgement that everything we are and everything we have is God's gift. And if we do happen to have some special talent, then gratitude to God for it is and should be all the greater. Genuine humility in an expression of a deep love of God. It also leads to a deeper respect for our fellow human being. Pride, on the other hand, leads to arrogance, self-importance, and it distances us both from God, and from each other.

The example of humility given to us is Mary, the Mother of God, the Mother of Christ - in particular that inspired and spontaneous prayer of hers, the Magnificat. Here is someone who is truly great and truly blessed and knows it and can unashamedly boast. But, and here is the irony, the turning on its head if you like, of our human way of thinking. Her greatness is not her doing. Her boasting is the acknowledgement of what God is and has been able to achieve through her. It is God who gets the credit and herein lies her wisdom and the foundation for her holiness.

A proud individual cuts a pathetic figure. If you watch some of the many fly-on-the-wall documentaries, look how pathetic some people show themselves to be as they, knowing they are in the wrong, will argue and remonstrate. Human pride is their downfall. Mary was great and knew where her greatness came from. She celebrated this, and in so doing, gave glory to God who was able to achieve so much through her: "He that is mighty has done great things for me. Holy is his name".

We are all flawed and weak. We all make mistakes and get things wrong, much of the time through our own stupidity, arrogance and belligerence. But this is not something to get down and discouraged about. Our realisation that we are hopeless at being what we should be by our own efforts alone should help bring us to the realisation that the good we achieve is God's work in us and through us - and herein lies the beginning of wisdom. Mary is our example. May we learn from her the path to true humility and wisdom.



MEMORIALS &  
MONUMENTS



Supplied & Erected

NEIL VIZARD  
01454 419108

**BAMFIELD**  
TREE SERVICES  
TREE SURGERY AND LOGS



www.bamfieldtreeservices.co.uk  
07761 810483

**prestige**  
event equipment hire

Supplying you with the best equipment to succeed!  
CELEBRATIONS & CORPORATE EVENTS

CUTLERY, CHINA, GLASSWARE, LINEN, REFRIGERATION,  
COOKING EQUIPMENT, BARBEQUES, FURNITURE & MORE

Fast and Efficient, we stock a wide variety of  
equipment covering anything from  
WEDDINGS to FESTIVALS.

For a FREE quote please call: 01179613170  
info@prestigecateringhire.co.uk  
www.prestigecatering.co.uk

**HK** **Harkell**  
**Building services**

- MAINTENANCE
- BRICKWORK
- ROOFING
- FENCING
- REPAIRS
- PLASTERING
- CARPENTRY
- PATIO ETC

FOR A FREE QUOTATION PLEASE CALL  
TEL: 01454 617110 MOBILE: 0787 6682546

**Window Cleaning**

07976 694744 - 0117 9085794



**M. Gray Window Cleaning**

Family run business for over 25 years  
experience working in the Almondsbury,  
Olveston, Aust areas - and nearby.

Email: mgwc1@hotmail.com

## Church News

### ST MARY THE VIRGIN, OLVESTON

NB. Those taking services may change.

Oct 2	10am 6pm	Holy Communion Evensong	Revs Lloyd & Bone Rev David Moss
Oct 9	10am 6pm	Pets Service Holy Communion	Janet McBride & Rev David Moss Rev David Moss
Oct 16	10am 6pm	Morning Prayer Holy Communion	Fran Brealy Rev David Moss
Oct 23	10am 6pm	Holy Communion Evensong	Rev Ann Lloyd Fran Brealey
Oct 30	10am 6pm	Holy Communion All Souls	Rev David Bone Revs Lloyd & Moss

Every Saturday in Term Time, 'REFRESH', 4.30-5.30 - Fun, relaxed church for families, all welcome.

Every Wednesday, Holy Communion, 10am.

**Contact:** Rev David Moss, 01454 415190; email: mossds@gmail.com

### CHAPELRY OF ST JOHN, AUST

Oct 9	10am	Morning Prayer	Trevor Cook
Oct 23	10am	Holy Communion	Rev David Bone

**Contact:** Trevor Cook, 01454 618442

**Church Wardens:** Jenn Dickens 632312 & Clive Roberts 632238

### ST MARY DE MALMESBURY, LITTLETON-ON-SEVERN

Oct 9	9am	Holy Communion	Rev Ann Lloyd
Oct 23	9am	Holy Communion	Tracey Black

**Contacts:** Tracey Black 417660 & Tim Pyper 416422 /07802 419451

### ST JOHN THE EVANGELIST, ELBERTON

Oct 9	9am	Morning Prayer	Judith Heybyrne
Oct 23	9am	Holy Communion	Judith Heybyrne

**Contacts:** Judith Heybyrne 616725 & John Gunnery 413225





**green side**  
Landscaping

The Cottage, Hortham Lane,  
Almondsbury, Bristol BS32 4JP

Greenside Landscaping can offer a wide range of services including:

**Artificial Grass ~ Brick & Block Driveways  
Decking ~ Fencing & Gates  
Garden Design ~ Patios & Paths  
Planting ~ Ponds & Water Features  
Turving & Seeding ~ Walling**

*We pride ourselves on flexibility and we strive to meet our client's requirements and budgets.*

www.greenside-landscaping.co.uk  
Tel: 01454 250648 Mob: 07980 384321  
Email: paulbradburn@hotmail.com



**MORAS**  
Decorating Services

**ANDREW MORAS**  
Quality Painting and Decorating Services

For your **FREE** no obligation quote contact Andrew:

**07962069036**

✉ [andrew@morasdecorating.co.uk](mailto:andrew@morasdecorating.co.uk)  
[www.morasdecorating.co.uk](http://www.morasdecorating.co.uk)



**Tavira**  
Algarve, Portugal  
3 Bed Apartment  
"can accommodate up to 8 people"

Modern 3-bedroom apartment in picturesque & historic Algarve town. 2-bathrooms including one en-suite, 2-balconies & roof terrace. Fully furnished, sleeps 6-8. Easy walking to thriving town centre. Close to railway station, golf courses & beaches. 30 minutes drive from Faro. Ideal for families or golfers. Tel: 07889 727729 Email: anthonyar@aol.com - [www.aminipadlavira.co.uk](http://www.aminipadlavira.co.uk)

TAVIRA - EAST ALGARVE  
EASYJET & RYANAIR  
NOW FLYING TO FARO  
FROM BRISTOL



**BE DLAM**  
www.bedlambeds.com

- Free local delivery
- Free assembly
- Free disposal of your bed

Divans / Mattresses / Ottoman & Wall beds /  
Memory foam & latex mattresses / Beds made  
to measure / Pine, Metal & leather beds

**Open Tuesday to Friday: 9am-5pm  
Saturday: 10am-3pm**

**Visit our showroom:** The Old Post Office  
26a Gloucester Road, Rudgeway, Bristol,  
BS35 3RY (by the speed camera)

**01454 617 277 or 07887 853479**



**Thornbury Stairlifts**  
SALES SERVICING & REPAIRS



- New & Re-conditioned Stairlifts & Warranty
- Removals & Relocations
- Free Surveys & Quotes - No Obligation
- Rentals for Straight Stairs

Independent, Professional & Friendly Advice  
Over 24 years practical experience



**Independent Stairlift Specialist**  
**01454 413748 07833 318722**  
[www.thornburystairlifts.co.uk](http://www.thornburystairlifts.co.uk)

## OLVESTON AND TOCKINGTON METHODIST CHURCH

Oct 2	10am	Tock Ch	Morning Worship led by Christine Jones
Oct 9	10am	Olv Ch	HARVEST FAYRE service led by Rev Dr Simon Edwards
Oct 16	10am	Tock Ch	Morning Worship with Holy Communion led by Rev David Hardy
Oct 23	10am	Olv Ch	Morning Worship led by John Barnett
Oct 30	10am	Tock Ch	Morning Worship led John Creech

**Contact:** Rev Dr Simon Edwards 418176,  
[simon.edwards@methodist.org.uk](mailto:simon.edwards@methodist.org.uk)

## THE VINE House of Prayer, Pilning Street, Awkley BS35 4HL

Meeting at 11am every Sunday and on the 1st and 3<sup>rd</sup> Wednesdays of each month at 2.30pm.

**Contact:** Mike and Barbara Matthews, 07512 917229 or email:  
[thevine\\_awkley@hotmail.com](mailto:thevine_awkley@hotmail.com)

## THE OASIS CHURCH, OLD DOWN

Services at 6.30pm every Sunday. All are welcome.

**Contact:** Neil Mobbs [cnmobbs@hotmail.com](mailto:cnmobbs@hotmail.com)

## AUST EVANGELICAL and LITTLETON EVANGELICAL CHURCHES

**Contact:** Danny Bamfield 01454 419324 email [danny@thebamfields.co.uk](mailto:danny@thebamfields.co.uk)



**HOLIDAY LET 6 BERTH HOLIDAY HOME**  
(2 Bed, 1 Ensuite)

**LADRAM BAY**  
OTTERTON . BUDLEIGH SALTERTON . EX9 7BX

Central Heating . Double-Glazed  
Private Beach. Fishing Trips . Cliff Walks  
Restaurant . Bar . Live Entertainment  
Indoor Pool . Kids Club  
Shop . Cafe . Takeaway

**Tony Gardner**  
**07889 727 729**

**RC CHURCH OF CHRIST THE KING**, Thornbury -  
Mass on Sundays at 9.30 and 10.30am  
**Contact:** 01454 412223, [www.ctk-thornbury.org.uk](http://www.ctk-thornbury.org.uk)

**SOCIETY OF FRIENDS (QUAKERS)**, Thornbury  
**Contact:** Brian Hawkins, [hawkinsb863@gmail.com](mailto:hawkinsb863@gmail.com) 01454 854867

## Diary Dates for October

Information believed to be correct at going to press.

1 Sat	Cubs' 'Line of Coins', The Street, Olveston Litter Pick <u>N.B. 10am</u> Greenforce, 'Assess Your Carbon Footprint' 'Refresh' - fun for families, every Saturday Octopus Drama: 'Give Us a Sign'	10am 10am 2.30pm 4.30-5.30 7.30	PH  StM StM CTK
3 Mon	Monday Movies 'Kiss Me Kate' read-through	7.30 7.30	StM PH
4 Tues	Thornbury Macular and Low Vision Group Over 60's Coffee Morning, every Tuesday	10.30 10-12	TMH DGCL
5 Wed	Table Tennis every Wednesday	7pm	PH
6 Thurs	Thornbury Farmers' Market Coffee Shop	9-1.30 9-12	StM
7 Fri	Over 60's Bingo or Quiz, every Friday	2-4	DGCL
8 Sat	'Refresh', for families Promise Auction for 'Made a Mark'.	4.30 7pm	StM PH
10 Mon	Severnvale Flower Club	2pm	SMCH
11 Tues	Over 60's Coffee Morning Thornbury Memory Café W.I. Aust Parish Council	10-12 10.15-11.45 7.30 7.30	DGCL TMH PH EVH
13 Thur	Coffee Shop	9-12	StM

14 Fri	Over 60's Bingo or Quiz	2-4	DGCL
15 Sat	'Refresh', for families Autumn Supper with entertainment	4.30 6.45	StM PH
18 Tues	Over 60's coffee morning	10-12	DGCL
20 Thur	Thornbury Farmers' Market Coffee Shop	9 - 1.30 9-12	StM
21 Fri	Over 60's Bingo or Quiz	2-4	DGCL
22 Sat	'Refresh', for families	4.30	StM
24 Mon	Severnvale Flower Club, Practice Class	2pm	SMCH
25 Tues	Over 60's Coffee Morning, every Tuesday Thornbury Memory Café Olveston Parish Council	10-12 10.15-11.45 7.30	DGCL TMH PH
26 Wed	Thornbury Library puppet show	2-3	
27 Thur	Coffee Shop	10-12	StM
29 Sat	Clocks go back tonight.		

KEY: AMH - Alveston Methodist Hall, CTK - Christ the King, DGCL - Daldry Gardens Community Lounge, EVH - Elberton Village Hall, OPH - Olveston Parish Hall, StM - St Mary's Church, SMCH - St Mary Church Hall Thornbury, TMH - Thornbury Methodist Church Hall

**Looking Ahead to November** 3<sup>rd</sup> 4<sup>th</sup> 5<sup>th</sup>, Low Noise Fireworks, 5-6.30pm, Old Down Country Park

**Contact details** for any clubs or organisations in the Meeting Point area can be found in the Meeting Point Directory on the community website: [www.olvestonandaust.com](http://www.olvestonandaust.com). If you would like to update your organisation's details, please email: [meetingpointsecretary@olvestonandaust.com](mailto:meetingpointsecretary@olvestonandaust.com)

**Advertisements** Neither Meeting Point, its editor, nor management committee accept any responsibility or give any guarantee in case of any dispute or claim as to quality, condition or delivery of commodities or services advertised in this magazine. It is not to be taken that publication implies recommendation. It is always advisable to check prices when ordering goods or services.

**Views** expressed by contributors are not necessarily those of the editor or Meeting Point magazine  
**Copyright Meeting Point 2022.** Copyright remains with the author(s) and Meeting Point. No part of this publication may be reproduced or transmitted in any form without the prior permission of the copyright owners.

Meeting Point is printed by Motion Printing Ltd.





## OLVESTON STORES & POST OFFICE

NOW STOCKING - JON THORNER'S FULL RANGE

NEW COSTA EXPRESS MACHINE IN STORE

HOME DELIVERIES (NO MINIMUM SPEND)

NEWSPAPERS DELIVERED (SMALL CHARGE)

PAYZONE FACILITY FOR BILL PAYMENTS, GAS, AND ELECTRIC TOP UPS

OUR INSTORE POST OFFICE OFFERS A WIDE RANGE OF SERVICES

CAR TAX  
BILL PAYMENTS  
CURRENCY ORDERS  
POSTAGE  
A RANGE OF INSURANCES  
&  
MUCH MORE

01454 612269

[olvestonstores@btconnect.com](mailto:olvestonstores@btconnect.com)

## BONDS *of* THORNBURY

INDEPENDENT ESTATE AGENTS



A truly local independent estate agency with over 40 years of experience and with unrivalled knowledge of the property market within Thornbury and South Gloucestershire.

Our caring sales business is based on our reputation, honesty and integrity.

Please contact: Rowena Moncrieff  
for further details...

14 The Plain, Thornbury

Tel No: 01454 858007

[www.bondsofthornbury.co.uk](http://www.bondsofthornbury.co.uk)

[enquiries@bondsofthornbury.co.uk](mailto:enquiries@bondsofthornbury.co.uk)

