

Meeting Point



October 2023

TRUE BLUE TAXIS
(OLVESTON)

Local Taxi Company



Honest, Reliable and Safe

Cash or Card Payments



Mobile:

07967 042794

Top-to-Tail Housekeeping

- Professional
- Dependable
- Comprehensive service

**Trading
Standards
Accredited**

**Felina
Contract Cleaning**

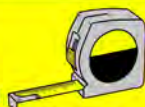
01454 201562
07790 050187
cleaning@felina.biz
www.felina.biz



Local Carpentry, Building & Plumbing

No Job Too Small

- Painting & Decorating
- Maintenance & Repairs
- Kitchen/Bathroom Fitting
- Static Home Repair & Refurbishments
- Handyman Service



For More Info Visit:

alvestonbuilders.co.uk

**Over 40 Years
of Experience** ✓ **Card Payments
Taken** ✓

Contact Mike

Tel: 01454 614887
Mobile: 07932 153300/07711 411075
Email: enquire@alvestonbuilders.co.uk

THORNBURY
Chiropractic
CLINIC

www.thornburychiropractic.co.uk

STOPTOBER

GIVE UP SMOKING WITH

ACUPUNCTURE

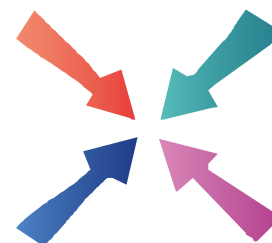
SPECIAL OFFER

4 sessions for £130

(usual price £140)

FREE telephone consultations

01454 418259



Meeting Point

Volume 48, Number 1, October 2023

The community magazine for the villages of Olveston,
Tockington, Old Down, Lower Hazel, Awkley, Ingst, Aust, Elberton and Littleton upon Severn

From the Editor

As readers may know, Meeting Point goes to the printers at least two weeks before it is ready to be delivered. At the time of writing we are experiencing an unexpected mini heatwave, but this may well be a distant memory by early October.

This month, alongside regular items about events and activities that will be happening in our area, we hope you will enjoy reading another article in our series on volunteering. We also have a very amusing report on the Olveston Cubs summer camp, and from the Parish Players, there is news of how and why they have honoured a long-standing and hard-working member of their team.

The evenings are drawing in already and at the end of the month, at 2am on Sunday 29th October, the clocks go back one hour from British Summer Time (BST) to Greenwich Mean Time (GMT).

Marelin

This month's cover photograph is by Lisa Helyar.

Meeting Point Founded in 1976 by the Anglican and Methodist churches in Olveston, near Bristol.

EDITOR:

Marelin Orr-Ewing
Courtlands, Olveston
Bristol BS35 4DU
Tel: 01454 610081
meetingpointeditor@gmail.com

ASSISTANT EDITOR:

Angela Williams
Ashlea, Haw Lane
Olveston
Bristol BS35 4EG
Tel 01454 612850
meetingpointmagazine@gmail.com

ADVERTISING:

Bernard Amos
Tel: 01454 620388
meetingpointadvertising@gmail.com

TREASURER:

John Clayton
meetingpointtreasurer@gmail.com

Publication date
1st of each month
Material for November 2023
to the Editor or Deputy Editor by
9th October 2023

**Meeting Point magazine and Meeting Point Directory are online at the
Community Website: www.olvestonandaust.com**

Thornbury Motors

- New and Used car sales
- Servicing, repairs and MOTs on all makes



thornburymotors.co.uk 01454 412535



Grovesend Road
Thornbury
Bristol
BS35 2EF



SAVAGE ASSOCIATES

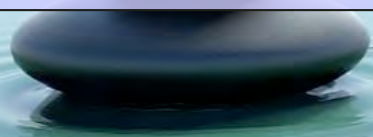
Accountants·Business Advisors
Corporate & Personal Tax Consultants

The Coach House, Aust Road
Olveston, Bristol BS35 4DE
Tel 01454 610388 Fax 01454 201541

for an initial consultation please contact:
edd.savage@savageassociates.co.uk

Vicarage Farm Holistic Therapy Centre

Bringing balance back
into your life.
Offering a wide range of
Holistic Treatments.



Hypnotherapy

A safe and effective treatment: to
remove stress, anxiety, depression
and phobias. Allowing positive and
powerful changes in your life.

Tel 01454 614390
www.vicaragefarm.org

Volunteering at Thornbury Museum

A Volunteer

Re-reading past copies of Meeting Point about volunteering, I was reminded of the reasons why I became a volunteer at the museum in Thornbury a number of years ago.

I was retired and, having lived in Olveston since 1967, my links with Thornbury have been long. I have watched it change from a busy, historic market town, full of independent shops and amenities, to a very different town - a dormitory town of Bristol and beyond.

Why do I like volunteering at the museum? Well, I'm interested in the past, and in the development of the area in which I live and have worked - not only Thornbury but Olveston and all the surrounding villages too.

Also, I can do it with a friend, and a group of wonderful volunteers who run the museum. Our job (you do it in pairs) is to staff the welcome desk and check room temperatures etc. Not arduous at all. We just keep things neat and tidy and enjoy the wonderful visitors.



In the museum, it's interesting to see photographs and information about people whose surnames you recognise and who still live in the area today - the Saverys (of plough fame), the Riddifords (still going strong), the Horders, the Bamfields of Elberton (farming and salmon fishermen). I could go on...

The museum also runs a very good website called Thornbury Roots (<https://www.thornburyroots.co.uk/>) which contains masses of original research into Thornbury people and places. People who are new to the area find it fascinating to see what the town and villages looked like in the past. The museum itself was one of the old cottages in Chapel Street.

A recent museum exhibition which featured on Points West showed displays and films about a number of Indian families who had made their homes in the area and created lives and careers here.

D. YOUNG
GARDEN SERVICES
Fully Qualified with over 16 years Experience
Grass Cutting Hedge Cutting Turfing Fencing
General Landscaping

Tel: 01454 416206 Mob: 07545 131488
Email: d.younggardenservices@hotmail.com

MD Aerials 
Call Michael Dagger
T: 01454 418 341 M: 07817 304 236

Freeview – Freesat – Sky – DAB Aerials

 Wall mounting LCD & Plasma
televisions setting up & tuning

 mikemdaerials@gmail.com
www.mdaerials.co.uk

T. EDWARDS PLANT
Digger and Driver Hire

- Site/garden clearance
- Footings
- Drainage/soakaways
- Driveway preparation
- Stump removal
- Fencing & turfing
- Narrow access equipment



Price or day work t: 07900 372349
t.edwardsplant@gmail.com
CPCS/CITB qualified & insured

Guitar & Piano Lessons

Local lessons for children & adults
beginners to advanced

Contact Max & Andy
max@crotchettfactory.co.uk 07859 912 438

Ukulele, Keyboard & Recorder lessons also available

 **S.J FARR**

**KITCHEN FITTING
SERVICES**

Mobile: 07915673649

Our Associated Services Include:

- Plumbing
- Wall & Floor Tiling
- Decorating
- Plastering

City & Guilds Qualified

Geoff Gulliver

Carpentry & Joinery, Littleton
ALSO
UPVC Doors, Windows and
Conservatories. For a very
competitive **FREE** estimate

Ring (01454) 414947

It's a delight to meet people and talk to the visitors who come in search of family connections. Many bring their children. We have child friendly tasks for them to do - and rewards!!

The museum has books to buy, and selling those is one of our jobs when we sit at the welcome desk. In the past, many of those books have been produced by Olveston Parish Historical Society. Other books of local interest have been, and still are being, produced by museum volunteers.

Next time you walk up Thornbury High Street, look down at the pavement. You'll see some brass insets with numbers on. These are part of the Heritage Trail, produced by volunteers at the museum. On the welcome desk, we can provide an information pack that links with the Trail.

Wouldn't it be nice to have the railway still running into Thornbury? There's a museum exhibition running along those lines (so to speak!) and, sometimes, a walk along the path of the old line. We help to promote guided walks led by museum volunteers.



Many of you will have walked the banks of the Severn and noticed the wooden remains jutting out of the mud and water. These are the remains of the salmon fishing industry, which used putchers. There was an article in last month's Meeting Point about it. There is much more to know, and to see, about that in the museum, as there is about Thornbury Castle. We have many visits from the Castle's guests, wanting to know more about the place in which they're staying. These guests come from all over the world.

If you have a spare four hours, once a month or once a fortnight (or even once a week!), bring along a friend, wife, or husband (or come by yourself) and join us at the museum. We do need more volunteers - your help will be very much appreciated!



You don't need to be a historian, just an interested person with a little time to give. It's not an arduous task, as I said, and it's an interesting and rewarding few hours.

Please look at the museum's website:
<https://www.thornburymuseum.org.uk/get-involved/volunteer/> and, if you think it's for you, go in and have a chat. You'll definitely make new friends!

Phoenix Flooring Limited 

DISABLED ACCESS

Finance Available
Buy now, pay monthly
Provided by **iDeal Finance**

RESIDENTIAL & COMMERCIAL FLOORING SPECIALISTS

Carpets • Luxury Vinyl Tiles • Laminates
Engineered Wood • Room Size Remnants
Vinyls • Artificial Grass

CASH & CARRY **OPEN TO THE PUBLIC AND TRADE**

Tel: 01454 620707
email: enquiries@phoenixflooringltd.co.uk
www.phoenixflooringltd.co.uk

 **Unit 15 Hemingway Business Centre**
Walker Way, Thornbury, Bristol, BS35 3US

Thank You

Matt Knight

Before her passing, Anji wrote to Meeting Point with a Thank You to the community for their help during her illness, and it feels fitting to share her words as she intended them below.

"Anji and Matt would like to say a big thank you to all our friends, neighbours and fellow parishioners for the wonderful gifts, cards and prayers received during Anji's bout of illness. We feel blessed to live in such a caring and thoughtful community and value your friendship and support. Please remember to pray for yourselves too in this difficult world in which we find ourselves living, and to count our blessings for every day. With love and thanks, Anji and Matt."

Despite her amazing strength and courage, Anji died peacefully at home with family on Saturday 2nd September. She is now at her most peaceful rest. I would also like to express my gratitude for the continued prayers, love and support given to us following her passing.



Parish Hall Autumn Supper

The 2023 Autumn Supper will be held on Saturday 14th October at Olveston Parish Hall.

Doors open at 6.45pm. Catering will again be provided by AHM Caterers. There will be a cash/card bar, together with entertainment. The ticket price is £16.

Please contact Pat Savage on 07703 281625 or email: patsavage1948@icloud.com

Alveston Gardens Association

2nd October: Pot Plants in the House with Nick Morgan
Meetings are in the Jubilee Hall, Alveston, at 7.30pm.

2 Men Went To Mow

All Aspects of Garden Maintenance, Plants & Shrubs Supplied, Garden Rubbish Removal, Fully Insured

Garden and Tree Service Tel: 07956 311901
Local, Friendly and Reliable Email kev@2menwenttomow.co.uk

Tree Surgery (NPTC Qualified)
All Types of Tree Work Undertaken
Contract Grass Cutting
Beds & Borders Maintained
Pruning and Hedge Cutting
Planting

FREE ESTIMATES!

L. & J. Gulwell
Family Funeral Directors

1 Quaker Lane,
Thornbury
BS35 2AD

Local independent family funeral directors
for over 50 years

Specialists in bespoke funeral services, burials,
cremations & pre-paid funeral plans

Call 24hrs 01454 418 779 • www.funerals.uk.net

COMPANION AND DRIVING SERVICE

Driving Miss Daisy
We're There For You

Now taking bookings in your area!

- For people of all ages unable to drive but wish to remain independent
- Supported trips to the doctor, hospital, shops, bank, hairdresser, vet, etc.
- Social outings, holidays, help at home and much, much more
- DBS checked and First-Aid trained
- Dementia friendly
- Wheelchair Accessible Vehicle
- Fully Licensed

To book your Daisy
07951 079 558 / 0333 014 6211
northbristol@drivingmissdaisy.co.uk
www.drivingmissdaisy.co.uk

Top quality Nursing and Residential Care

Beech House

Beech House Care Home provides excellence in all aspects of care for all our residents, offering the best in nursing care for the elderly and residential care for people with a diagnosis of dementia.

Our unique care service includes:

- beautiful gardens
- purpose built homes with 24/7 air circulation
- spacious rooms and wide corridors
- top quality chefs
- television with DVD and telephone in each room
- wheelchair provision at no additional cost
- high technology baths and walk-in showers
- regular minibus trips
- programme of interesting and stimulating activities

RECENTLY RATED Outstanding by Care Quality Commission

To arrange a visit, telephone **01454 412266**
For more information see www.bristolcarehomes.co.uk

Bristol Care Homes
providing a unique care service

August Bank Holiday Cream Teas

A big thank you to everyone who came along to support our 'Cream Teas' on Tockington Green on August Bank Holiday. The fine weather meant that the Green was filled with people enjoying a cuppa and delicious home-made cakes and scones.

Thank you to the fabulous team of helpers who baked, set up, served, cleared away and washed up – we could not have done it without you. We raised an excellent £1200 which will go towards the upkeep of Olveston and Tockington Methodist Church.

Tea and Chat



Tea and Chat is a lively group set up for anyone - man or woman - who finds it difficult to get out and socialise. We meet once a month for tea and cake at Oasis Church in Old Down. It's always on a Friday afternoon at 2.30pm. Transport is provided and it's all free!

We held our summer lunch on Friday 1st September which was enjoyed by all those who attended. Here are some photos of the occasion.

For details of the next Tea and Chat, please call Lynn (01454 612201) or Lesley (01454 613804)



XL Plumbing & Heating Solutions Ltd

- General Plumbing
- Boiler Installation, Servicing & Maintenance
- Gas Safety Certificates
- Bathroom Installation & Tiling

Contact Mark Mob: 07738 726803
Email: xlplumbing@hotmail.co.uk
Tel: 01454 549008
Web: www.xlplumbing.co.uk

safe

Learn with Bern

Knitting & Crochet Classes



Individual & Small Group Tuition

Over Lane, Almondsbury

Tel 07359515347

hunkaboo.learn@gmail.com

GRANGE CARPETS



- CARPETS
- VINYL
- LAMINATE FLOORS
- RUGS
- CURTAINS
- BLINDS

Serving the local community since 1984, Grange Carpets are your first choice for flooring, rugs, curtains, and blinds. We supply most leading brands of carpet and vinyl as well as ILIV curtains and the Think Rugs range. Our carpet prices include standard fitting, with a free home measurement and consultation service.

Grange Carpets is a member of the Associated Carpet Group.

GRANGE CARPETS
28 ST MARY STREET
THORNBURY
BRISTOL BS35 2AT

01454 419805

Parish Players' Award for Jill Harris

Caroline Brewster



At our recent AGM, we took the opportunity to honour a number of our long-standing members by awarding them Life Membership. In particular, we wanted to recognise the huge contribution made by Jill Harris, who choreographed all our productions for 19 years, from 2003 to 2022.

In 2003, the Parish Players' production was The Merry Widow. Our Director, Linda Evans, knew Jill was an experienced performer and choreographer and asked her for help with the choreography, which involved folk dance and the famous Merry Widow waltz. It was followed in 2004 by South Pacific, with the unforgettable all-male number 'There's Nothing Like a Dame' (reprised in 2020) and, in 2005, by Guys and Dolls with the memorable 'Hot Box' dancers! In 2006, the cast of Fiddler on the Roof were challenged with Cossack dancing – the men sinking to their knees while balancing bottles on their heads – and, as Jill adds, "*Many more movements for which they never forgave me!*"



The Parish Players broke box office records in 2008 with My Fair Lady with its wonderful Ascot scene. This was followed by Oklahoma!, featuring the Dream Ballet and a tap dance by the

cowboys, led by Aunt Eller. Tap was also a feature of 'The Sun has got His Hat On' in Me and My Girl (2012).



delightful The Sound of Music.

Starting with Carousel in 2011, our productions involved increasing numbers of younger members, continuing in The King and I (with its wonderful Siamese Ballet sequence 'The Small House of Uncle Thomas'), Oliver!, Annie, Peter Pan, The Wizard of Oz and the

Nigel
Vili

www.manwithavan.info
Removals ✓ Clearances ✓ Deliveries ✓
Scrap cars ✓ We're local ✓
Cheaper than a skip!
Call: 07742791139

PLAN-IT STONE
MARBLE • GRANITE • QUARTZ

Quartz Worktops

Worktop Manufacture – Templating & Installation
www.planitstone.co.uk



0% Finance available

Email: sales@planitstone.co.uk

Trade and Public Welcome

Call: 0117 329 1718

Wider range of materials, at a better price than B&Q, Wren, Howdens. Deal Direct with your local Worktop manufacture

 **PawsPetCare**
...simply for the love of animals

Providing care for your pets
when you need it

Contact Helen for a friendly and reliable service
07493 153520 or enquiries@pawspetcare.com
www.pawspetcare.com

Frontline Martial Arts

Traditional Martial Arts / Taekwondo

Mighty Mites (under 10's): Fridays 4.30-5.15pm at
Juniors (ages 10-13): Mondays 7.15-8.15pm
Adults/over 13's: Mondays 8.15-9.45pm
at Alveston Youth Centre



Tel: 07771 692222
www.frontline-ma.co.uk

SEVERN SIDE TAXIS

SIX SEAT COMFORT
AIR CONDITIONED CAR

AIRPORTS
BUS STATIONS



HOSPITALS
EVENINGS OUT

RING STEVE WARD
07879 601011

THE WHITE HART INN Olveston



Traditional 17th Century English Pub

Catering for Parties and Functions
Wide variety of cask & keg beers
Skittle alley & pool table available
Book now for Skittle Matches
Award winning courtyard garden

Telephone: 01454 612175

FRANCIS DESIGN & BUILD Carpentry & Building Services

For all aspects of carpentry

Doors, Skirting, Kitchens, Fencing,
Decking, Stairs, Timber frame etc.

Call Craig on 07970 514409
(or, if busy)
email: craigyoung0308@live.co.uk



Under Jill's tutelage, many young members developed into enthusiastic and capable players and dancers – a credit to the Parish Players. Jill's final show with us was Calamity Jane in 2022, featuring a Can Can dance and the comic song and dance number 'Everyone Complains About the Weather'.

Jill says she was amazed when she joined the Parish Players by the number of men available (which is rather rare in most societies) and how the cast, mainly singers, worked hard and "did me proud with the movement". She says, "Every show made me feel proud – the cast always rose to the occasion and gave their all."



Jill has set a standard of choreography to which we will continue to aspire in the future.

Linda says:
"We are all hugely grateful to Jill for her hard work and commitment over the years and Parish Players are honoured to have Jill as a Life Member."

Our 2024 Parish Players' production is Brigadoon. Rehearsals start on Monday 2nd October at 7.30pm in the Parish Hall, with auditions taking place on Thursday 12th October. To get involved (either on stage or behind the scenes), please get in touch via secretaryparishplayers@gmail.com or www.facebook.com/OlvestonParishPlayers.

Severnside Heating & Plumbing



- Installations
- Servicing
- Repairs

Working locally since 2003. An experienced heating and plumbing engineer. For a no obligation quote please call Mike
Mob: 07554 825813 Tel: 01454 613780



**Your advert could be
here and reaching
1,500 households**

**Contact Bernard
meetingpointadvertising@
gmail.com**



Early Years Group Music Classes for ages 0-3 years

- Severn Beach, Littleton on Severn
- All welcome from £3 a session
- Piano teaching for children age 4+



Janet Harrison
Suzuki Piano Teacher
Janet_harrison@outlook.com
T: 07562 212435



Olveston and Tockington WI

October is another busy month for members of Olveston and Tockington WI. Richard Lloyd, who would need a whole page to list his achievements, is coming to talk about 'Looking After England's Finest Countryside'. The White Hart is booked for skittles and lunch for our members. There is also a walking tour of Arnos Vale Cemetery with other members of the Avon Federation of Women's Institutes.



As a member of WI, you have the opportunity to meet like-minded women from different backgrounds. If you would like to join us, please contact Angela Green on 01454 615222 or scan the WI QR code on the left to find out more about joining the UK's largest women's membership organisation.

Friends of St. Mary's

The prize winners in the September draw were:

Amount	Number	Name
£150	377	Mrs J Jones, Olveston
£75	498	Revd D Bone, Tockington
£50	262	Mrs A Knight, Olveston
£25	567	Mrs M Shurmer, Olveston
£25	236	Mr M Scott, Rudgeway
£20	240	Mr R Lloyd, Tockington
£20	578	Mr R Lloyd, Tockington
£20	592	Miss J Davies, Olveston
£20	173	Mr W Morgan, Tockington
£20	272	Ms A Chick, London

If you are not yet a member and wish to join the lottery, please telephone Andy Phillips on 01454 614890 or email andisp28@hotmail.co.uk

Don't forget, if you're not in, you can't win!

Dave Webb

Painter - Decorator

07809 869149

01454 201640

*Reliable, professional, friendly service.
Please ask for your free quotation*



Squire Sweep

A chimney sweep service from
Michael Squire

Tel: 07504 253 467

Email: squiresweep@gmail.com

Visit: www.squiresweep.co.uk

motion
motiondesignsprint

Do you know we print the Meeting Point Magazine?

We also print for lots of local clubs, events and businesses.

Based in Severn Beach we offer convenient off-road parking right outside our door!

We print everything from Wedding Stationery to Business Stationery

Our professional design and modern printing techniques have saved time and money for lots of people.

Fast, efficient and professional.

Why not let us print for you?

01454 631289
info@motionprinting.co.uk
www.motionprinting.co.uk

ALMONDSBURY PHYSIOTHERAPY AND SPORTS INJURY CLINIC

Louise Brinson
Chartered Physiotherapist, hpc reg

Almondsbury Surgery, Sundays Hill
Almondsbury, BS32 4DS

Tel: 07786915442
Fax: 014540615745
E-mail: physioulouise@hotmail.co.uk

Also at Aztec Spa Leisure Club

ACE1
Window & Gutter Cleaning

Window Cleaning
Gutter Cleaning & Repair
Fascia & Soffit Cleaning
Conservatory Roof
Solar Panel Cleaning
Power Washing

M: 07590 201264
T: 01454 436162

 Gleaming Insurance

Olveston and Tockington A great venue for :

Parish Hall
07780 515317

- Fitness
- Parties
- Public events
- Music & Dance

Check availability & book online at www.olvostonparishhall.co.uk

"Our newly decorated Hall"





Recipe for 1st Olveston Cub Camp Summer 2023

Akela (Hannah Cameron)

Ingredients

1 Outdoor Activity Scout Centre in Staffordshire
21 Spectacular Olveston Young People,
16 Adventurous Outdoor Activities,
5 Intrepid Leaders,
3 Magnificent Young Leader Teenagers.
5 Jam-packed days
And a horsebox full of equipment, games and snacks!

Method

Gather ingredients and walk all for a minimum of 6 miles a day, savour meals, sprinkle-in morning snacks, afternoon tea-break and after supper-snacks, mix in the challenge of new adventures, douse all liberally in lake water and infuse with bursts of heavy rain.
Then, steam gently in waterproofs before marinating in mud!
Lastly, flambé (marshmallows) by campfires each night (even when raining!) ensuring that you constantly whisk-in heaps of fun and games!
Serve to parents before cleaning, drying and returning all the equipment.
Then relax, rest, and enjoy the memories of all those (tired) smiling faces!



An enormous thank you must go first to our sponsors – the Olveston village community (we used some of the Line of Coins fund-raising money to pay for an extra leader to attend with us.) Kings Heavy Haulage and Architen Landrell Manufacturing Ltd – these two wonderful sponsors enabled us to have t-shirts, ponchos and embroidered badges for each young person and for the Cubs to have a very full programme of adventurous activities.

To my fellow volunteer adult leaders, Shere-Khan (Nick Gingell), Mole (Iain Johnstone), Chil (Jed Williams) and Robin (Felicity Rendell) - thank you for your Herculean work at Summer Camp, keeping all the Cubs super busy and active. I am extremely proud to volunteer alongside you all, creating lifelong memories not only for the young people we lead, but for all of us too!

Thank you also to our three young leaders; Bagheera, Hathi & Baloo (Emily Gingell) - who not only enjoyed all the activities but who were invaluable, helping leaders as extra pairs of hands and also by organising games,

Bristol Carriage Masters

- Religious or non-religious funerals
- Bespoke funerals for burial or cremation
- Fully guaranteed pre-paid funeral plans
- Direct cremations



177 Crow Lane, Henbury, Bristol, BS10 7DR
Telephone: 0117 950 8066
Website: www.bcm-funerals.co.uk
Email: admin@bcm-funerals.co.uk

Windmillcare Homes

— great places to Live



Windmill House

The original, elegant home in a delightful rural setting with 2 acres of beautiful gardens delivering unrivalled care

01454 413818



OSBOURNE COURT

Our brand new purpose-built home providing exceptional specialist dementia care in the heart of the village of Stoke Gifford

0117 944 8700

**Residential, Short-term Respite
and Day Care available**

enquiries@windmillcare.com

or www.windmillcare.com

TOCKINGTON OSTEOPATHY

HELPING YOU BACK TO HEALTH

Effective Treatment of:

- Back and Neck Pain
- Arthritic and Rheumatoid Pain
- Joint Pain and Injuries
- Sciatica and Trapped Nerves
- Tendonitis and Muscle Injuries
- Tension Headaches

Please call on **07870 219249** or visit our website www.tockingtonosteopathy.co.uk to make an appointment or discuss how we can help.

Run by Natalie Gladstone - over 20 years' experience.

Easy parking on site - all major health insurances covered.

Old Down Hill, Tockington, BS32 4PA.

encouraging and supporting the Cubs while being inspiring role-models and wonderful ambassadors for Scouts.

But most importantly, a huge thank you to 1st Olveston Cubs, who did an amazing job (camping for five days in the prelude to storm Antoni) and who all, completed their personal bests during the challenging outdoor activities such as crate-stacking, climbing, archery, tomahawk-throwing, abseiling, zip-lining, coracling (!), raft-building, caving, obstacle-courses, team games, pedal-go-karting, monkey-tree climbing, bouldering, scavenger-hunts, campfires and even... the eliminator which was a climbing challenge, and the slightly damp (read - totally drenched) camping conditions. Well done Cubs and thank you everyone!



Thornbury & District Cancer Research UK

Our Autumn Fair will be held at St Helen's School, Alveston, on Saturday October 21st from 10am to 12.30pm.

There will be morning coffee/tea and cake, marmalades, jams, chutneys, savoury and sweet bakes, crafts, Christmas gifts and cards, diaries, quiz sheets, books, plants and a raffle.

Tel: 01454 885766
Mob: 07724 166917

Ridge

Roofing and Property Maintenance

Roofing ❖ Chimney Repairs ❖ Lead Work
Guttering ❖ External Painting
General Maintenance ❖ **FREE Estimates**



D-CR

DOMESTIC APPLIANCES



DOMESTIC APPLIANCE REPAIR SPECIALIST

- WASHING MACHINE
- TUMBLE DRYER
- DISHWASHER

- FRIDGE FREEZER
- COOKER
- HOB OR HOOD

**Fast, friendly and efficient service
Sales - Service - Repair**

Tel: 01454 850522 - Mobile: 07917441539
Email: d-cr@live.co.uk - Web: www.d-crdomesticappliances.co.uk

EARTHWORKSUK

We offer a range of recycled and quarried products including 6F5, type 1, topsoil and decorative stone. These can be delivered straight to you on site or collected from us at our yard in Cromhall. Check out all we can offer you on our website or contact us using the details below.

Skip Hire

Top Soil

Recycled Aggregates

Grab Lorry Hire

Tipper Hire

info@earthworksuk.co.uk **www.earthworksuk.co.uk**
Orders Line: 07782472727
Bristol: 01179 828265 - South Glos: 01454 501037

Save up to 70% on your electricity bill

Google ★★★★★
Solar PV installers since 2010



ELECTRICAL SERVICES

**Your Trusted,
Local Electricians**

- Lighting
- Sockets
- Rewires
- Consumer Units
- EV Charge Points

- Solar Power
- Battery Storage
- Fault Finding
- Landlord Reports
- EICRs

f t i /laelectrical
01454 633 336
laelectrical.com




Our Local Archaeological Dig

Jenny Newley

We're opening the 2023/24 Olveston Parish Historical Society season on 4th October with a talk about our local dig in Lower Hazel (just beyond Old Down). The talk will be given by Aaron Girdlestone.

Aaron became a volunteer at Thornbury & District Museum in 2017 and, when volunteers there learned he was interested in archaeology, they suggested he join the museum's archaeology group, which had been quietly and persistently digging at Lower Hazel since 2010, under the guidance of former museum trustee Roger Howell, whose professional career had been spent excavating Late Bronze Age Greece, including the Minoan palace site at Knossos.



Aaron was so enthusiastic and became such a proficient member of the museum archaeology group that Roger and fellow members suggested he apply to do an archaeology course. After some urging, he did. He went to Cardiff University and came away with a First-class Honours

degree.

But he didn't desert our local dig. He continued volunteering with the museum group, who, in the meantime, had suggested to the University of Bristol that they might want to use the Lower Hazel site as their summer dig, as a follow up to their years digging at Berkeley. The University managed, with the museum's support, to obtain a heritage grant to fund the Lower Hazel project. This summer and last, Aaron has helped to supervise the dig.

As we've heard at previous talks, the dig location was marked on the 1880 Ordnance Survey map as 'Chapel (Site of)'. But Roger Howell didn't think this was an old chapel site and he and fellow museum volunteers gradually established that the site related to the former Alveston Deer Park and that the buildings concerned were probably an Anglo-Norman royal hunting lodge, dating from the late eleventh/early 12th century. A chronicle by John of Worcester says that William II, known as William Rufus, was taken seriously ill at Alveston and had to be rushed to Gloucester where he was nursed by monks all through Lent 1093. With the recent involvement of the University, and even more excavation, that original assessment looks realistic, but the

LINELA

embroid | print | promote

One place for everything promotional.
Specialising in embroidery,
printing and branded gifts



T Shirt Printing
Sports wear
Work wear
School wear
Promotional Products

Call us: 01454 615300

Email us: sales@linela.co.uk

www.linela.co.uk



Livewire Electricals
Electrical & Mechanical Solutions



Domestic, Commercial
and Industrial Installations

All electrics for new build, extensions and alterations to satisfy mandatory Building Regulations. Landlords safety inspections
Portable Appliance Testing (PAT)

Electrical and electronic service and repair
For 24 hour call-out service available please call Peter Jones: Tel: 07880 858785

Email: pete.livewire@blueyonder.co.uk

Local number Tel: 01454 613482

Visit our web site at
livewire-electrics.co.uk

BonneFreshClean
Carpet & Upholstery Cleaning Specialists

Love the look and smell of clean and fresh carpets and upholstery?

Bonne Fresh Clean brings to you a professional carpet and upholstery service that will leave them sparkling and fresh.

Call for a free no obligation quote today!

- Thorough, gentle deep cleaning, no residues
- Child and pet friendly treatments
- Latest industry approved qualification and full insurance



Bonne Fresh - Relax and enjoy beautifully clean and fresh carpets and upholstery!

T: 01454 436001 M: 07774 908410

W: www.bonnefreshclean.co.uk

44 Townsend Lane, Almondsbury, Bristol, BS32 4EQ

Cookin' On Gas Ltd



Repairs & Sales of all domestic appliances:

Gas & Electric Cookers and Hobs
Washing Machines, Dishwashers
Tumble Dryers

GAS safe
REGISTER
211879

www.cookinongasltd.co.uk

enquiries@cookinongasltd.co.uk

Matt Cole
1 Olive Gardens Tel 01454 851545
Alveston Mob 07715 705670

story is becoming more complex and the site may well have been used at an even earlier date than first thought.

Some of us were lucky enough to have a guided visit to the site with Aaron this June, where we also met Dr Stuart Prior, head of the undergraduate archaeology programme at Bristol. Both of them, along with the site owner and museum volunteers, featured in an episode of Alice Roberts' 'Digging for Britain' programme, which aired in January.

If you come along to our first meeting of the season on 4th October, you'll be able to hear from Aaron what the latest thinking is about the site and what they hope to do next. His talk will follow a brief AGM. Refreshments (free) will be available before the start of the meeting at 7.30pm. Everyone from the local community is very welcome to come along!

Wed. 4th Oct. 7.30pm. Methodist Church, The Street, Olveston BS35 4DR
All welcome! Pay on the door (by cash or cheque to OPHS - no cards).
Annual membership (7 meetings): £10. Visitors: one meeting: £3.

Bristol Port: What's Next?

In a change to the Olveston Parish Historical Society programme advertised in last month's Meeting Point (the November and January speakers have swapped around), our November meeting will now feature a talk by John Chaplin, who is a director at The Bristol Port Company.



About 10 years ago, we visited and heard about the history of the port. John will now explain how The Bristol Port Company is planning for the future.

What are the challenges?
What are the opportunities?

This is your chance to find out about a crucial part of Britain's infrastructure - history in the making!

Wed. 1st Nov. 7.30pm.
Methodist Church, The Street,
Olveston BS35 4DR

All welcome! Pay on door (by cash or cheque to OPHS - no cards).

Annual membership: £10. Visitors: one meeting: £3

Beauty at the Barn

4, Grey Gables, Vicarage Lane, Olveston
For appointments telephone Nicola on
01454 201717



Jessica Manicures
GELeration Nails
Shellac Nails
Jessica Pedicures
Spray Tanning
Waxing
Ear Piercing
Eyelash Perming
Eyebrow Shaping
Eyelash tinting
And more...
Evening appointments available
Gift vouchers available



Olveston & Tockington
Tennis Club

Introducing a brand new coaching
programme with TH Tennis.
Offering 5 days/week coaching
from kids to adults

Clubspark.lta.org.uk/THTennis

www.ottctennis.co.uk

Now's the time to get back
on court.

TECHNICAL SUPPORT FOR YOU - AT HOME AND AT WORK

I'm Jed, the Tech Guy - I have a world of technical knowledge and the patience of a saint!
No matter how big or small, I can solve your technical issues in person, over the phone or on line.



LAPTOPS
COMPUTERS
PRINTERS
MOBILE PHONES
XBOX

JUST ABOUT ANYTHING REALLY



And best of all, I can come to you

Fast turnaround and affordable solutions – your I.T. will be taken care of...
So what are you waiting for, call me and your technical issues will be resolved in no-time!

Tel: 01454 406000

Web: myneat.co.uk

Email: help@myneat.co.uk



New 918 Bus Service

Caroline Brewser

The loss of the 622 bus at Easter this year affected at least 60 families living between Severn Beach and Thornbury, whose children regularly used the service to travel to The Castle School (including the Sixth Form). Initial campaigning by parents saw South Gloucestershire Council fund a dedicated school bus until the end of the summer term (July 2023). Further campaigning by parents has now secured a subsidy from South Gloucestershire Council to instate a new bus service, the 918, which will run between Severn Beach and Thornbury at school times until July 2024.

918 to Thornbury	
Stop name	
Severn Beach, Severnwood Gardens	07:30
Redwick (S Gloucs), The Kings Arms	07:36
Marsh Common, Pilning Road	07:40
Easter Compton, The Fox	07:44
Over (S Gloucs), Over Court	07:53
Almondsbury, St Mary's Church	07:58
Tockington, The Swan	08:04
Olveston, Haw Lane	08:08
Alveston (S Gloucs), Alveston Down Post Office	08:13
Thornbury (S Gloucs), Rock Street	08:19
Thornbury (S Gloucs), The Castle School	08:25
918 to Severn Beach	
Stop name	
Thornbury (S Gloucs), The Castle School	15:30
Thornbury (S Gloucs), Rock Street	15:35
Alveston (S Gloucs), Alveston Down Post Office	15:40
Olveston, Haw Lane	15:45
Tockington, The Swan	15:50
Almondsbury, St Mary's Church	15:55
Over (S Gloucs), Over Court	16:01
Easter Compton, The Fox	16:06
Marsh Common, Pilning Road	16:10
Redwick (S Gloucs), The Kings Arms	16:15
Severn Beach, Severnwood Gardens	16:22

Importantly, please note that this service is open to all members of the public, as well as Castle School students. Payment is by cash or debit card on the bus. Fares from Olveston/Tockington/Old Down to Thornbury are £3 return, £2.50 single (the same price for adults and children). The service will run in term-time only. It will pick you up if flagged down at any bus stop between Severn Beach and Thornbury, not just those listed on the timetable.

Parents are still working to make sure there is a bus service to The Castle School beyond July 2024, so please contact me (cbrewser@freeuk.com) if your children will be using this bus to travel to school, or if you will be relying on this bus for other reasons, and I will keep you informed about progress (your details

PREMIER HOMECARE Delivering Outstanding Live-In Care

A COVID-safe and affordable alternative to nursing home care.

Our fully managed, affordable 24 hour Live-In Care service allows you or your loved one to continue living in the safe, familiarity and comfort of the family home.

Our staff are hand picked specifically to match the personal needs and requirements of each individual client; guaranteeing you a bespoke and tailored service.

24 hour Care at Home - carers carry out all required duties following a personalised care-plan. They can manage medication, personal care, domestic duties as well as shopping and meal preparation plus trips out where required.

0117 456 2490
www.premier-homecare.co.uk

homecare.co.uk
Homecare.co.uk Review Score for Premier Homecare

Offices at:
24 Canford Lane
Westbury-on-Trym
BS9 3DH

67 Stoke Hill,
Stoke Bishop
BS9 1EP

Inspected and rated Q
Outstanding ☆

"We are delighted with the Live-In care that our mother receives in her home. The carers are patient, kind and very well-trained. We trust them completely with our mother's care."
ML, November 2020

el cuisine

Catering for any occasion
Private parties, Birthday and Anniversary Celebrations,
Weddings, Funerals, Corporate Events,
Formal Dinners, Shoot Lunches... whatever the occasion

www.el-cuisine.co.uk Please contact Emma 07931952939 info@el-cuisine.co.uk

Independent Preparatory School and Nursery
for Boys and Girls aged 2 - 13

- Small, friendly classes
- Envious success rate for Senior School entry
- Pathway Programme for Years 7 & 8
- Wrap-around care
- Excellent facilities

Tockington Manor School

Scan the QR code / Visit www.tockingtonmanorschool.com / Call 01454 613229

won't be shared with anyone). Having your name on the list is really valuable, as it was only because the campaign had the backing of 60 local families that the bus was instated.

Please support this local bus to help us achieve a bus service for our villages in the long term, and please spread the word to people who may not read Meeting Point. Thank you.



Oveston Parish Council

Pat Savage

Vicarage Lane Play Area

The Parish Council manages the play area under licence from South Gloucestershire Council. Over the past ten months the Parish Council has engaged parishioners who have a special interest in the equipment at the Vicarage Lane play area. Last year a number of play pieces were identified as in need of replacement.

A Stroud-based specialist supplier, All Out Play, has been advising us on the various types of equipment suitable for children and adults, together with availability and costs. They were responsible for fitting out both the Old Down and Alveston play areas, both of which have proved extremely popular.

There are dozens of types of equipment and just as many suggestions were received during the nine-month consultation period. Not everything could be included, mainly because of cost implications, but we have brought together those items which the majority would like to see installed.

Before making the final decisions, and then seeking the finance to make it all happen, a public meeting will be held in Oveston Parish Hall, Upper Tockington Road, on Sunday 15th October between 12 noon and 2pm. Plans, specifications and costings will be available and Councillors will be on hand for explanations if needed and to answer questions. Refreshments will be available.

For further information please contact:

Martin Gibson martin.gibson@olvestonparishcouncil.gov.uk
Tony Turnbull tony.turnbull@olvestonparishcouncil.gov.uk
Pat Savage pat.savage@olvestonparishcouncil.gov.uk






We are hiring

Join our Team at Beech House in Thornbury



Contact us

0117 992 7012

keeping your garden beautiful...

ask us about LAZYLAWN

- LazyLawn - superior artificial grass supply and installation - licensee for Bristol & South Wales
- landscape design and build with 25 years experience
- tree surgery
- garden makeovers
- regular garden maintenance

Garretts Gardens and Landscapes

for Garretts Gardens or Landscapes
t 01454 614111 m 07974 109919
info@garrettslandscapes.co.uk
www.garrettsgardens.co.uk



The agent for all seasons

Come rain or shine,
lisa costa estate agents have the experience and knowledge to take you smoothly through the moving process.



lisa costa
RESIDENTIAL SALES & LETTINGS

53 High Street | Thornbury | BS35 2AR
01454 279734 | sales@lisacosta.co.uk | lisacosta.co.uk

Please note: If your property is currently on the market, the terms and conditions of your Existing agency agreement must be considered before instructing ourselves.

Community Grants

Applications for grants to be awarded during the six months ended can now be made. The annual amount available has been reduced to £5,000 with £2,500 to be granted for the six months ended 31 March 2024. Applications can be made to the Clerk at olvestonparishcouncil.gov.uk



The Monday Movie Club returns to St Mary's, Olveston, on 4th October and opens with a film generally regarded as one of the best ever made. It is a 1974 classic with the highest ever review ratings.

When Los Angeles private eye J.J. "Jake" Gittes (Jack Nicholson) is hired by Evelyn Mulwray to investigate her husband's activities, he believes it's a routine infidelity case. It soon becomes clear that nothing is clear and the investigation is anything but routine. Then he meets the real Mrs. Mulwray (Faye Dunaway) and realizes he was hired by an imposter. Mr. Mulwray's sudden death leads to a tangled trail of corruption, deceit and sinister family secrets and Evelyn's father becomes a suspect in the case. The suspense and unexpected revelations will leave you hanging onto the edge of your seat or, rather, pew.

Doors open at 7pm and the film starts promptly at 7:30. This is, as always, a community event and there is no charge for entry - everyone is welcome. Tea and coffee are served plus a fully licensed bar. We are not permitted to name the film as a condition of our licensing agreement.



Pamela MacLeod
HOLISTIC THERAPIES
REFLEXOLOGY • MASSAGE • AROMATHERAPY

Member of Federation of Holistic Therapists

07765804144

****Introductory Offer****
£10 off any 60 min treatment

FULL BODY MASSAGE	60 MINS	£45
*AROMATHERAPY MASSAGE	60 MINS	£48
BACK, SHOULDER & NECK MASSAGE	30 MINS	£25
REFLEXOLOGY	60 MINS	£45

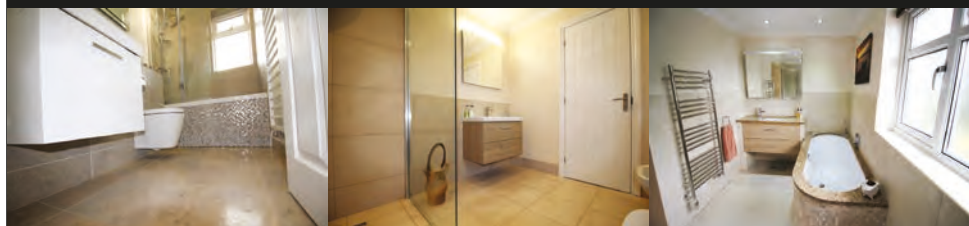
Please allow at least 15 minutes for Consultation

**A blend of pure essential oils will be tailored to address each individual's needs.*

Paul Whittaker

BATHROOMS & WETROOMS

DESIGN . SUPPLY . INSTALLATION



Tel: 07879 666221 . Website: www.paulwhittakerbathrooms.co.uk



Village Care

Our local Care and Support staff can assist with all your Homecare requirements, from cleaning and domestic duties to personal care, we can tailor our service to meet your needs.

Please contact us for a free no obligation assessment.

T: 01454 415861 E: info@village-care.co.uk

63 High Street Thornbury www.village-care.co.uk

Thornbury and District U3A

Have you recently retired or reduced your commitments leading up to retirement? Are you new to the area and looking to make new friends? Thornbury U3A promotes keeping us mentally and physically engaged and active in an enjoyable and friendly atmosphere. "Learn, Laugh and Live" is the U3A motto and aims to provide opportunities for members to do so without having to travel too far or enrol in expensive courses.

We have around 1500 members and around 85 different groups meeting at various venues throughout the area, but there is always room for more. Our numbers have greatly reduced due to the Covid-19 pandemic and to this end would like to invite anyone who is interested in what we are about, to come along to our next Welcome Meeting:

Monday, 16th October, St Mary's Church Hall, Eastbury Road, Thornbury, from 3.30pm

Our Groups mainly meet during the day, and interests range from archaeology to YOYO (You On Your Own). Some meet weekly, others less often and they include physical activities, wine tasting, lunches out, crafts, board and card games, language lessons, organised visits to gardens and churches, concerts and theatre as well as purely educational topics. Please come along - we would love to meet you.

For further information visit our website www.thornburyu3a.org.uk. or phone our Membership Secretary Jackie Gitsham, on 858438, or our Chairman Roger Steer, on 294371.



Green Force

What does sustainability mean?

If something is sustainable, it can last for a long period of time. Being sustainable means doing little or no harm to the environment. Throwing plastic away is not sustainable because the planet will eventually run out of landfill space. In a landfill site the rubbish is buried and left to rot. The plastics take hundreds of years to biodegrade, while the remaining rubbish

gives off methane which is a harmful greenhouse gas.

LALU'S GARDEN SERVICES

01454 616034
07490 514641



- All makes servicing and repairs
- Petrol and Diesel MOT Testing
- Tyres, Exhausts and Batteries
- Air Conditioning
- Latest Bosch On-Board Diagnostics
- Vehicle Sales



New Road, Olveston, BS35 4DX

01454 202030



Sustainability is also about diet. Sustainable diets are of global concern and should produce low environmental harm. Our eating habits are having an adverse impact on the environment and climate change and will in turn threaten global food security. Each stage of our food system has environmental impacts – farming methods and manufacturing processes and the way we waste food is damaging the planet. The amount of food we waste each year in the UK would feed 30 million people. We throw away 7.3 million tonnes of food each year (71% from our homes). The average household cost of food waste is £470 per year. Planning meals, using leftovers, writing a shopping list and checking the fridge before you go shopping will make a real difference.

Sustainable food systems start with good agricultural practices, economic distribution methods, eating seasonally, buying food locally and consuming less meat. All these attempts are very effective in our aim to be sustainable on a daily basis.

Community Café at Tockington Chapel

The next dates for the 'First Friday' community café at Tockington Chapel are Friday 6th October, Friday 3rd November and Friday 1st December, 9.00-11.30am. We look forward to seeing everyone for coffee, cake and company. Children and dogs welcome. Cash only please.

The café is run by the community on behalf of the community, and it aims to provide a hub for locals to meet and keep in touch. Could you help the regular volunteers run the café one Friday? Nothing too taxing, just a bit of tea-making and cake-cutting. If so, please let us know on the day or contact tocs.friends@gmail.com. Thank you!

'Autumn Leaves' Tea

St Peter's Hospice Severnside Support Group would be delighted to welcome you to our Autumn Leaves tea in Rockhampton Village Hall on Sunday 29th October from 2.30pm to 4pm. There will be homemade cakes, jams, pickles and chutney, books, a raffle and Christmas cards.

Entrance £3.00 to include a cup of tea/coffee and piece of cake!

Please come along and support St Peter's, your local Hospice.

gsharchitects



FREE CONSULTATION

For further information please contact us on:
info@gsharchitects.co.uk
www.gsharchitects.co.uk
 Almondsbury, Bristol

07780 000220

Build without planning permission

Quality design service from concept to completion

Planning, construction drawings and contract administration service tailored to suit you

Domestic, Commercial, and Sustainable Architecture.

Experienced working with Listed Buildings

Build your dream home in your garden

Development Advice and Appraisal

3D Visualisation Services

RIBA



Events in Thornbury

The Bristol Ensemble



Presented by An American Landscape by Candlelight

Bernstein – West Side Story Suite
 Gershwin – Concerto in F
 Gershwin – Rhapsody in Blue
 Philip Glass – Mishima
 Copland – Hoe Down from Rodeo

This programme has been specially arranged for piano and strings quintet for the Bristol Ensemble.

The performance is at the United Reformed Church, Chapel Street, Thornbury, BS35 2BA, Saturday 14th October at 7.30pm. Tickets £18 from AAGThornbury@gmail.com

New Passage Cat Kennels

**Large Runs ~ Heated Chalets
 Licensed Cattery
 in Pilning**

**Tel: 01454 632 456
www.catkennels.co.uk**



Design & Planning

Home Extensions - Change of Use - Floor Plans
 Full Planning & Building Regs drawing service
 Almondsbury based with successful local projects

contact *Julian Lowther* for friendly professional advice

t:0117 2591059 julian@jfl-planning.co.uk
 m:0789 0179546 www.jfl-planning.co.uk

G.V.R PITCHER & SONS

**The Yard
 Haw lane
 Olveston
 Bristol**



**TEL: 01454 619299
 MOB: 07989 208964**

Property Care & Improvements



MINIMA

A unique modern musical accompaniment to an iconic silent film.

The Cabinet of Dr. Caligari. A Hallowe'en Treat!

If you were lucky enough to see last October's viewing of Nosferatu, you know how captivating this mixture of historic film and Minima's avant-garde score can be. Synthesising electronic guitar, cello, bass and drums carry you along with movements that are beautiful and haunting.

Among many screenings Minima have performed at the Edinburgh Fringe and the Glastonbury Festival. The production won the 2015 Media Innovation Awards Installation/Exhibition/Live event category.

The performance takes place at Turnberrie's Community Centre, Bath Road, Thornbury, BS35 2BB on October 29th at 7.30pm. Tickets £12 from AAGThornbury@gmail.com



CHRISTMAS DAY MENU

All we want for Christmas

4 COURSES
(10 Edmonds Edmonds)

4 Courses for £69.99 per person



Book your festive occasion or Christmas Day meal with us

For all festive and Christmas Day bookings please email Wayne and the team on 3291@greeneking.co.uk or call 01454 614800.

A £10 deposit per person is required for all bookings.

We look forward to seeing you!



FESTIVE FAYRE

All we want for Christmas

2 COURSES OR 3 COURSES

2 Courses for £16.99
3 Courses for £19.99



BATHROOM & WET ROOM DESIGN & INSTALLATIONS

TILING • GENERAL PLUMBING • PLASTERING

BILLY COOK
WJC PLUMBING & TILING

07748 085 920
WJCPLUMBING@OUTLOOK.COM

● [FACEBOOK.COM/WJCPLUMBINGANDTILING](https://www.facebook.com/WJCPLUMBINGANDTILING)
● [INSTAGRAM.COM/WJCPLUMBINGANDTILING](https://www.instagram.com/WJCPLUMBINGANDTILING)

Allotment Association AGM and Speaker

This year's (OPAGA) AGM is at 7.30 on Friday November 10th and will be followed at about 8.15 by our speaker. We are very pleased to have Tony Sansum joining us this year. Many of you will know him through the Thornbury Garden Shop and we are sure that he will have lots of interesting and useful advice for allotment holders and those who garden at home. All are welcome, but if you are not an OPAGA member please could you let us know you will be coming as refreshments will be served. Please email the secretary at janwinterolveston@gmail.com

If you are interested in having an allotment, there may be a few plots available this autumn – do get in touch if you'd like to know more. Please email the chair, Marlene Baker, at opaga.chairman@gmail.com

Grant-Giving Programme 2023 - Thornbury and District League of Friends

Thornbury and District League of Friends has now celebrated two very successful years of community grant awards and support. Since the closure of Thornbury Hospital at the end of 2018 we have also continued to support the Henderson Rehabilitation Unit at Grace Care Centre and the Outpatients in St Mary Centre. Examples of recipients to date include Jigsaw, Krunch, Phase, Haven Memory Café, New Siblands School, Friends of Castle School, Great Western Air Ambulance, Thornbury Community Permaculture Project and lip-reading classes.

This year's grant-giving programme encourages local organisations to apply for a grant towards any health-related project supporting our charitable aims for which they might need our financial assistance. We welcome your interest and will consider all requests carefully.

The 2023 programme will operate as follows:

20th October: Grant programme launch event (for details see our Facebook page).

17th November: Last date for grant application submission.

24th November: Announcement of grants awarded.



GARDEN MACHINERY SPECIALISTS
SALES, SERVICE AND SPARES

E-MAIL: themowerdoctor@hotmail.co.uk WEBSITE: www.themowerdoctor.net
ADDRESS: Unit 2-3 The Rearing Unit, Oldbury Lane, Oldbury-On Severn, BS35 1RF
TELEPHONE: 01454 411 701









DEALERS FOR:











optimus™

"Optimise your Health"

Please Enquire:

Tel: 01454 528608

Email: info@optimuscp.com

Web: optimuscp.com

11 The Plain, Thornbury, BS35 2AG

PHYSIOTHERAPY

CHIROPRACTIC

PODIATRY

CHIROPODY

OLDOWN

TREE SURGEONS

TREE SURGERY AND HEDGE MAINTENANCE

PROFESSIONAL. QUALIFIED. FULLY INSURED.

www.oldowntrees.org

Antony Leicester 07800512408 info@oldowntrees.org



EC COMPUTERS

Computer support and solutions for the home and business user.

- PC/laptop repairs
- Virus removal
- Wifi/broadband issues
- Sponsors of Olveston FC

How can we help? Tel: 01454 281 500 Web: www.eccomputers.co.uk

IT Support/Repairs Office Equipment Print Solutions Telecoms Cyber Security Managed Services Software/Database applications

In the meantime, please contact Andrea for further information regarding the above programme abates1101@msn.com

The last event of the year will be our AGM on Thursday 30th November (for details see our Facebook page).

We desperately need several more active members to help us put on future events, so if you are interested in assisting in any way, please contact Andrea. We look forward to another rewarding year of supporting health and wellbeing in our local community.

NB: For news of future events/updates please see our Facebook page: <https://www.facebook.com/pages/category/Charity-Organization/Thornbury-and-District-League-of-Friends-520474571777943/>

Severn Vale Flower Club

The Festive Season is the title of our Christmas Open Evening demonstration, by Elizabeth Graham. It will be held in the Olveston Parish Hall, on Tuesday 7th November. Elizabeth is a National Demonstrator, also a teacher and has been involved in organising many festivals. In the past, our members have visited Elizabeth's house and enjoyed a lunch followed by a floral demonstration. We are delighted to have Elizabeth as she has many commitments.

Doors open 6.30pm for 7.30pm. For more details contacts numbers are 01453 811089 or 01454 885213.

Thornbury Rotary and Butterfly Space - Sewing Machines needed!

Since 2007, Thornbury Rotary has been supporting Butterfly Space in Malawi with grants. Initially, the funding was used for the development of a nursery. Local girl Alice Leaper, from Thornbury, has worked tirelessly over the years, with her colleagues and team to build school facilities and support for primary and secondary students. Many other projects have been developed to help the local community. This non-profit venture has been expanding to incorporate adult vocational training, including basket weaving and carpentry in the curriculum.

They now wish to start a sewing group for the ladies, so there is an urgent

YOUR PC GURU

COMPUTING FOR 'MERE' MORTALS

01454 616365

- Home visits
- Computer Repair
- Phone & Tablet setup
- Home Wireless & Broadband
- Smart Home Tech
- Complete Mac support

www.yourpcguru.co.uk
Technology Advice & Repairs

JC 4x4 Ltd SPECIALIST IN LANDROVER

SERVICE • REPAIR WORK • DIAGNOSTICS • MOTS • OTHER VEHICLES WELCOME

CALL JAMES: 01454 261067 / 07966 086447



07307 727244

Free Quotes

Domestic	Radiant heating
Commercial	Boilers
Breakdowns/ call outs	Radiators
Servicing	Plumbing
Installations	
Warm air heating	LPG, natural gas, oil



www.edgeheatingandplumbing.com info@edgeheatingandplumbing.com

need to acquire manual sewing machines. Rotary is asking if anyone has a working machine and would like to donate it to this very worthwhile cause, to please contact Roger Perrin on 07768 173856, preferably by text. Rotary will arrange for collection and all sewing machines will be serviced before despatch to Malawi. Thornbury Rotary president, Guy Rawlinson, expresses his gratitude to anyone who can make such a donation.

To view a comprehensive list of the activities taking place, please check the Butterfly Space website: www.butterflyspacemalawi.com.

Thornbury Art Club

Thornbury Art Club Monthly Club Night

Tuesday 24th October

7.15 for 7.30pm. St Mary's Church Hall, Thornbury.

Bristol professional artist and tutor Paul Weaver will be giving a painting demonstration. Visitors welcome. Non-members £5. Tel. 01454 414433 for further details.

New Evening Painting Studio Group

Do you enjoy painting or drawing, but are working during the day or have no space or time at home? We are holding an evening Studio Group on Wednesdays between 7pm and 9.30pm at Alveston Methodist Church Hall, where you can devote time to your own artwork and receive support from other artists. Refreshments are provided to make an enjoyable evening.

For enquiries, please contact:

Mary Drown tel. 01454 414433 or chairthornburyart@gmail.com

Pat Howarth tel. 01454 822468 or patricia.howarth@hotmail.co.uk

Or visit: www.thornburyartclub.org.uk

www.facebook.com/ThornburyArtClub

October at Thornbury Library

Ready, Set, Plant (a bulb) and Show

Saturday 7th October 9.30-12.30

With Thornbury Horticultural Society

Come and plant a bulb, take them home and watch them grow!!!!

For more information about what is happening at Thornbury Library, please visit: <https://beta.southglos.gov.uk/thornbury-library>



**NORTH BRISTOL
BATHROOM SHOWROOM
BS32 4HY**

**Scan the QR code for a
No obligation
Design & Quotation
Appointment**





Use code ALM25 to receive
25% DISCOUNT

**North Bristol Bathroom Showroom
Gloucester Road
Almondsbury
Bristol
BS32 4HY**

 **0117 980 7419**

 **showroom@nbbs.plumbing**

 **@nbbshowroom**

 **North Bristol Bathroom Showroom**



National Poetry Day

Jo Baxter

This year's National Poetry Day is on the 5th October, and this year's theme is Refuge.

Poetry may not be your thing, but many people still remember poems they had to learn 'off by heart' for school. Modern poetry is completely different to, say, Chaucer's 'A Pardoner's Tale' but there is a poem for everyone.

For more information about this year's event please visit:
<https://nationalpoetryday.co.uk/>

Yours Faithfully

*Pat Thirkettle
The Vine, Pilning Street*

When I say I worship at The Vine many people are unsure of its existence. We meet in a former Methodist Chapel through the auspices of Aust Evangelical Church. Michael and Barbara Matthews created and led it for eighteen years but have recently moved to Northern Ireland. They painted over the entrance door 'A house of prayer for all nations'. These words of Jesus were seen as an aspiration, a goal, not necessarily for all nations, but that His House, the universal church, would be a house of prayer.

We take our name The Vine from Jesus' saying, 'I am the vine, you are the branches, if any man remain in me and I in him, he will bear much fruit, apart from me you can do nothing'. To quote Michael, 'The purpose of The Vine is to see a growing community of God's people possessing their inheritance in Christ, individually and corporately, and manifesting the kingdom of the Lord Jesus Christ in their lives'.

Outside on the notice board is a small holder containing paper and pencil inviting anyone who wishes to request a prayer and over the years we have found a few in the letter box. We meet on Sundays and twice a month on Wednesday afternoons. We rarely invite anyone, but the door is always open in expectation of who God will bring to join us. We give thanks to Him for all who have come, as evidenced by the visitors' book.



MEMORIALS &
MONUMENTS



Supplied & Erected

NEIL VIZARD
01454 419108

BAMFIELD
TREE SERVICES
TREE SURGERY AND LOGS

www.bamfieldtreeservices.co.uk
07761 810483

prestige
event equipment hire

Supplying you with the best equipment to succeed!
CELEBRATIONS & CORPORATE EVENTS

CUTLERY, CHINA, GLASSWARE, LINEN, REFRIGERATION,
COOKING EQUIPMENT, BARBEQUES, FURNITURE & MORE

Fast and Efficient, we stock a wide variety of
equipment covering anything from
WEDDINGS to FESTIVALS.

For a FREE quote please call: 01179613170
info@prestigecateringhire.co.uk
www.prestigecatering.co.uk

**'Indawes
- Outdawes'**

Decorating and
Home Improvements

Painting | Wall Papering
Floor Laying

Martin Dawes 07720 509653
martin.dawes@live.com

Window Cleaning

07976 694744 - 0117 9085794



M. Gray Window Cleaning

Family run business for over 25 years
experience working in the Almondsbury,
Olveston, Aust areas - and nearby.

Email: mgwc1@hotmail.com

Church News

ST MARY the VIRGIN, OLVESTON

Oct 1	10am 6pm	Pet Service No Service. Vivaldi Gloria Concert, St Helen's Alveston, 7pm.	Rev David Moss ----
Oct 8	10am 6pm	Morning Prayer Holy Communion	Rev Ann Lloyd Rev David Bone
Oct 15	10am 6pm	Morning Prayer Holy Communion	Janet McBride Rev Ann Lloyd
Oct 22	10am 6pm	Holy Communion Evening Prayer	Rev Ann Lloyd Janet McBride
Oct 29	10am 6pm	Holy Communion All Souls Service	Rev David Bone Revs Lloyd and Moss

Every Saturday in Term Time, 'REFRESH', 4.30-5.30 - Fun, relaxed church for families, all welcome. Every Wednesday, Holy Communion, 10am.
NB. Clergy may change.

Contact: Rev David Moss, 01454 415190; email: mossds@gmail.com

CHAPELRY OF ST JOHN, AUST

Oct 8	10am	Morning Prayer	Trevor Cook
Oct 22	10am	Holy Communion	Trevor Cook

Contact: Trevor Cook, 01454 618442

Church Wardens: Jenn Dickens 632312 and Jon Burnett 633835

SOCIETY OF FRIENDS (QUAKERS), Thornbury

Contact: Chris Willmore, chriswillmore@blueyonder.co.uk

HOLIDAY LET 6 BERTH HOLIDAY HOME
(2 Bed, 1 Ensuite)



LADRAM BAY
OTTERTON . BUDLEIGH SALTERTON . EX9 7BX

Central Heating . Double-Glazed
Private Beach . Fishing Trips . Cliff Walks
Restaurant . Bar . Live Entertainment
Indoor Pool . Kids Club
Shop . Cafe . Takeaway

Tony Gardner
07889 727 729

greenside
Landscaping

The Cottage, Hortham Lane,
Almondsbury, Bristol BS32 4JP

Greenside Landscaping can offer a wide range of services including:

Artificial Grass ~ Brick & Block Driveways
Decking ~ Fencing & Gates
Garden Design ~ Patios & Paths
Planting ~ Ponds & Water Features
Turving & Seeding ~ Walling

We pride ourselves on flexibility and we strive to meet our client's requirements and budgets.

www.greenside-landscaping.co.uk
Tel: 01594 841559 Mob: 07980 384321
Email: paulbradburn@hotmail.com

BEDLAM
www.bedlambeds.com

- Free local delivery
- Free assembly
- Free disposal of your bed

Divans / Mattresses / Ottoman & Wall beds /
Memory foam & latex mattresses / Beds made
to measure / Pine, Metal & leather beds

Open Tuesday to Friday: 9am-5pm
Saturday: 10am-3pm

Visit our showroom: The Old Post Office
26a Gloucester Road, Rudgeway, Bristol,
BS35 3RY (by the speed camera)

01454 617 277 or 07887 853479

MORAS
Decorating Services

ANDREW MORAS
Quality Painting and Decorating Services

For your **FREE** no obligation quote contact Andrew:

07962069036

✉ **andrew@morasdecorating.co.uk**
www.morasdecorating.co.uk

Tavira
Algarve, Portugal
3 Bed Apartment
"can accommodate up to 8 people"

Modern 3-bedroom apartment in picturesque & historic Algarve town.
2-bathrooms including one en-suite, 2-balconies & roof terrace.
Fully furnished, sleeps 6-8. Easy walking to thriving town centre.
Close to railway station, golf courses & beaches. 30 minutes drive from Faro. Ideal for families or golfers. Tel: 07889 727729
Email: anthonyar@aol.com - www.aminpadtavira.co.uk

TAVIRA - EAST ALGARVE
EASYJET & RYANAIR
NOW FLYING TO FARO
FROM BRISTOL

Thornbury Stairlifts
SALES SERVICING & REPAIRS

• New & Re-conditioned Stairlifts & Warranty
• Removals & Relocations
• Free Surveys & Quotes
• No Obligation
• Rentals for Straight Stairs

Independent, Professional & Friendly Advice
Over 24 years practical experience

Independent Stairlift Specialist
01454 413748 07833 318722
www.thornburystairlifts.co.uk

ST MARY DE MALMESBURY, LITTLETON-ON-SEVERN

Oct 8	9am	Morning Prayer	Rev Ann Lloyd
Oct 22	3pm	Holy Communion	Tracey Black

Contacts: Tracey Black 417660 and Tim Pyper 416422 /07802 419451

ST JOHN THE EVANGELIST, ELBERTON

Oct 8	9am	Morning Prayer	Judith Heybyrne
Oct 22	9am	Holy Communion	Judith Heybyrne
Oct 29	6pm	All Souls Service	Judith Heybyrne

Contacts: Judith Heybyrne 616725

Church Wardens: Catherine Gunnery 413225 and Cheryl Meredith 411065

OLVESTON AND TOCKINGTON METHODIST CHURCH

Oct 1	10am	Tock Ch	Harvest Festival Parade Service, Rev Dr Simon Edwards
Oct 8	10am	Olv Ch	Morning Worship led by Chris Sledge
Oct 15	10am	Tock Ch	Morning Worship led by Rosalie Doyle
Oct 22	10am	Olv Ch	Morning Worship led by Rev P J Jackson
Oct 29	10am	Olv Ch	Morning Worship led by Rosalie Doyle

Contact: Rev Dr Simon Edwards 418176 simon.edwards@methodist.org.uk

THE VINE House of Prayer, Pilning Street, Awkley BS35 4HL

Meeting at 11am every Sunday and on the 1st and 3rd Wednesdays of each month at 2.30pm.

Contact: 07512 917229, email: thevine_awkley@hotmail.com

THE OASIS CHURCH, OLD DOWN

Services at 6.30pm every Sunday. All are welcome.

Contact: Neil Mobbs, cnmobbs@hotmail.com

AUST EVANGELICAL and LITTLETON EVANGELICAL CHURCHES

Contact: Danny Bamfield 01454 419324 e-mail danny@thebamfields.co.uk

RC CHURCH OF CHRIST THE KING, Thornbury

Mass on Sundays at 9.30 and 10.30am

Contact: 01454 412223, www.ctk-thornbury.org.uk

Diary Dates for October

Information believed to be correct at going to press.

2 Mon	Men's Walk and Chat Group, Tock Green Parish Players first read-through of 'Brigadoon'	9.30 7.30	OPH
3 Tues	Over 60's Coffee Morning every Tuesday Citizens Advice every Tuesday, Thornbury Town Hall Macular and Low Vision Group RBL Women's Section	10-12 10-12 10.30 7.30	DGCL TMH DGCL
4 Wed	Table Tennis every Wednesday OPHS- Excavations at Lower Hazel	7pm 7.30	OPH OMC
5 Thurs	Thornbury Farmers' Market Coffee Shop 'Good Afternoon Choir', every week Thornbury Art Club every Thursday	9.30 9-12 1-3 1.30	S+M URC SMCH
6 Fri	First Friday Community Café. (Cash only please) Haven Memory Cafe	9- 11.30 10.15	TMC URC
7 Sat	Repair Café at St Helens Church Alveston	10am	
9 Mon	Men's Walk and Chat Group, 2nd ⁺ and 4 th Mondays, meet Tock Green Severn Vale Flower Club, demonstration	9.30 2pm	SMCH
10 Tues	Thornbury Memory Café WI	10.15 7.30	TMH OPH
12 Thurs	Coffee Shop	9-12	S+M
13 Fri	Haven Memory Café	10.15	URC
14 Sat	Coffee Morning Olveston Parish Hall Supper	10.30 6.45	OMH OPH
15 Sun	Public Meeting re Vicarage Lane Play Area	12 - 2	OPH
16 Mon	Men's Walk and Chat Group, Tock Green	9.30	
17 Tues	Thornbury Art Club - club night	7.30	SMCH
19 Thurs	Thornbury Farmers' Market Coffee Shop	9.30 9-12	S+M

23 Mon	Severn Vale Flower Club, practice	2pm	SMCH
24 Tues	Thornbury Memory Café Olveston Parish Council	10.15 7.30	TMH OPH
26 Thurs	Coffee Shop	10-12	S+M
28 Sat	Coffee Morning	10.30	OMH
29 Sun	BST ends at 2am		
30 Mon	Men's Walk and Chat Group, Tock Green	9.30	

KEY: **AMC** - Alveston Methodist Church, **AMH** - Alveston Methodist Hall, **CS** - Castle School, **CTK** - Christ the King, **DGCL** - Daldry Gardens Community Lounge, **EVH** - Elberton Village Hall, **OC** - Oasis Church, Old Down, **OMC** - Olveston Methodist Church, **OMH** - Olveston Methodist Hall, **OPH** - Olveston Parish Hall, **QAMP** - Queen Alexandra Memorial Pavilion, Old Down, **S+M** - St Mary's Church, **SMCH** - St Mary Church Hall Thornbury, **TCC** - Turnberries, **TMC** - Tockington Methodist Church, **TMH** - Thornbury Methodist Church Hall, **URC** - United Reform Church



Contact details for any clubs or organisations in the Meeting Point area can be found in the Meeting Point Directory on the community website: www.olvestonandaust.com. If you would like to update your organisation's details, please email: meetingpointsecretary@olvestonandaust.com

Advertisements Neither Meeting Point, its editor, nor management committee accept any responsibility or give any guarantee in case of any dispute or claim as to quality, condition or delivery of commodities or services advertised in this magazine. It is not to be taken that publication implies recommendation. It is always advisable to check prices when ordering goods or services.

Views expressed by contributors are not necessarily those of the editor or Meeting Point magazine
Copyright Meeting Point 2023. Copyright remains with the author(s) and Meeting Point. No part of this publication may be reproduced or transmitted in any form without the prior permission of the copyright owners.

Meeting Point is printed by Motion Printing Ltd.



OLVESTON STORES & POST OFFICE

NOW STOCKING - JON THORNER'S FULL RANGE

NEW COSTA EXPRESS MACHINE IN STORE

HOME DELIVERIES (NO MINIMUM SPEND)

NEWSPAPERS DELIVERED (SMALL CHARGE)

PAYZONE FACILITY FOR BILL PAYMENTS, GAS, AND ELECTRIC TOP UPS

OUR INSTORE POST OFFICE OFFERS A WIDE RANGE OF SERVICES

CAR TAX
BILL PAYMENTS
CURRENCY ORDERS
POSTAGE
A RANGE OF INSURANCES
&
MUCH MORE

01454 612269

olvestonstores@btconnect.com

BONDS *of* THORNBURY

INDEPENDENT ESTATE AGENTS



A truly local independent estate agency with over 40 years of experience and with unrivalled knowledge of the property market within Thornbury and South Gloucestershire.

Our caring sales business is based on our reputation, honesty and integrity.

Please contact: Rowena Moncrieffe
for further details...

14 The Plain, Thornbury

Tel No: 01454 858007

www.bondsofthornbury.co.uk

enquiries@bondsofthornbury.co.uk

